

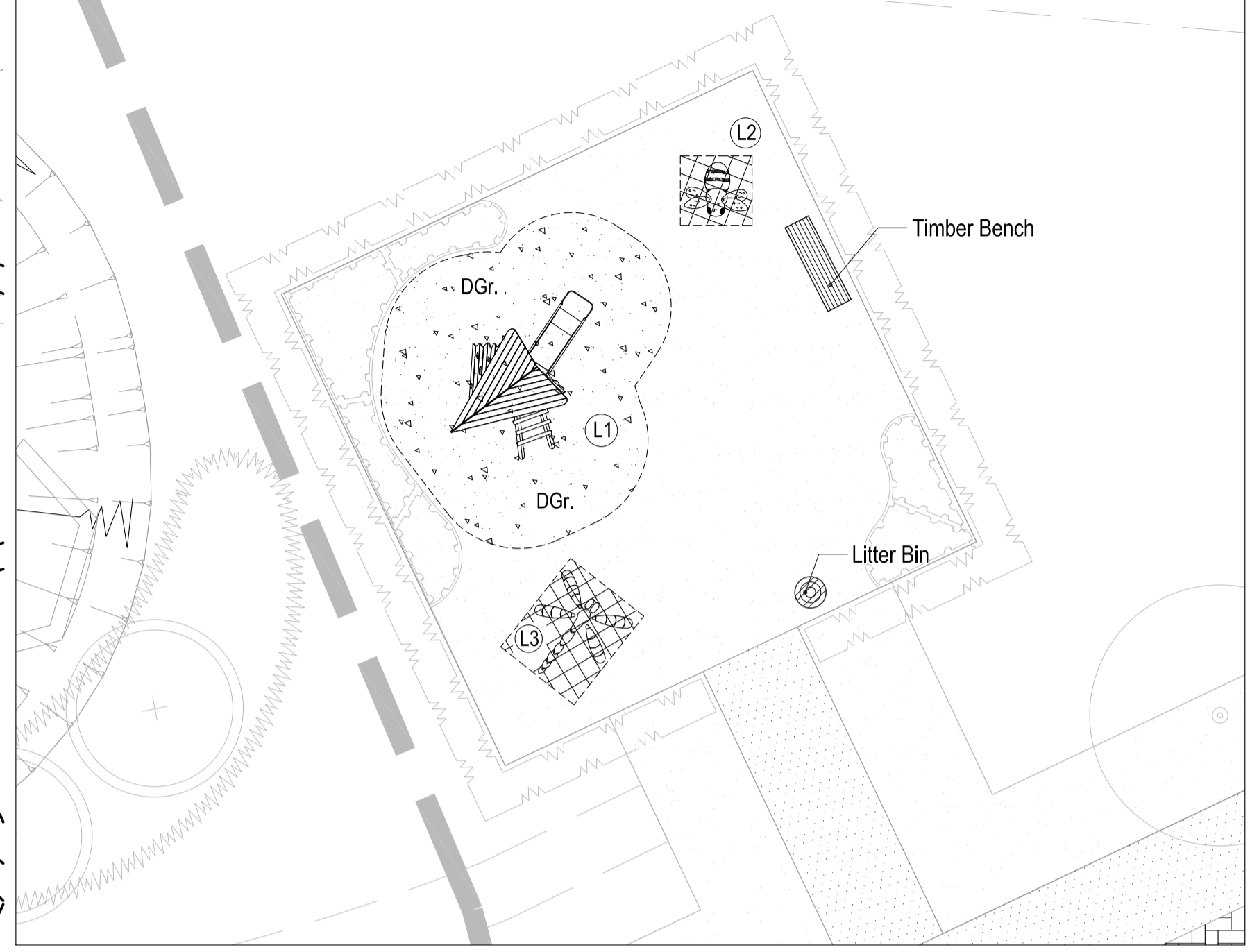


See Inset Box 1

REFER TO CSa/2325/110

REFER TO CSa/2325/110

Inset Box 1 - LAP
Scale 1:100 @ A1
REFER TO CSa/2325/112 FOR DETAILS OF PLANTING



Schedule of Play Equipment

- All equipment to be installed as per manufacturer's instructions.
- All equipment is as specified or equal and approved.

LAP Equipment	Supplier	Ref.	Age Range (yrs)
L1. Twin Triangle Deck Unit	Miracle Play Ltd	MB10004	3yrs-8yrs
L2. Bee	Hand Made Places	BXHMP350001	2yrs-12yrs
L3. Dragonfly	Hand Made Places	BXHMP 350007	2yrs-12yrs

Notes

- Final design of LAP must be agreed with Local Authority prior to installation and must be in accordance with the Specification of Work for Adopted Playgrounds.
- All play equipment and safety surfacing to be installed in accordance with European Safety Standards BS EN 1176, BS EN 1177 and BS EN 7188.
- Minimum depth of safety surfacing must be in accordance with the relevant EU Standards taking account of maximum fall height.
- All equipped play areas should be subject to an independent post-installation inspection; by a certified inspector as registered with the Register of Playground Inspectors International (RPII) e.g. ROSPA.

The copyright of this drawing and designs remains with CSa Environmental Planning. Do not scale from this drawing. Refer to figured dimensions only.

0 5 10 metres

LEGEND

- APPLICATION BOUNDARY
- EXISTING TREES / VEGETATION
- EXISTING TREES / VEGETATION TO BE REMOVED
- SOFT LANDSCAPING PROPOSALS - Refer to DWG/CSa/2325/112-113
- HARD LANDSCAPING PROPOSALS
- BITUMINOUS MACADAM SURFACE - to vehicular areas (incl. parking bays) to engineers details NB: White thermoplastic 'T' markers to denote parking bays on shared parking courts and driveways
- POROUS CONCRETE BLOCK PAVING - to private drives: 'Pavot' block paving by Marshalls Ltd. concrete block, 200 x 100 x 80mm, with smooth finish, chamfered, Charcoal colour, laid herringbone pattern, 200mm 'Charcoal' soldier course edging.
- CONCRETE TEGULA PAVING - to private drives: 'Tegula' concrete self paving by Marshalls Ltd. 160 x 120mm, 160 x 160mm & 160 x 240mm, all 80mm thick. Traditional colour, offset herringbone laying pattern, laid 90 degrees to kerb. 160 x 160mm block soldier course edging NB: Kerb to be conservation kerb laid flat (250mm x 145mm) by Marshalls Ltd. laid flush with carriageway
- CONCRETE GRANITE SETTS - Feature paving: 'Granite aggregate sets' by Marshalls Ltd. 100 x 100 x 100mm thick, silver grey colour, laid in stack bond.
- CONCRETE PAVING SLABS - to gate access paths: 'Paver Silver Unity' concrete paving slabs by Marshalls Ltd. 450 x 450 x 32mm thick, buff colour, riven finish, laid stack bond.
- BITUMINOUS MACADAM SURFACE - to footpath link, to engineers details
- POROUS CONCRETE BLOCK PAVING - to private drives: 'Pavot' block paving by Marshalls Ltd. concrete block, 200 x 100 x 80mm, with smooth finish, chamfered, Charcoal colour, laid herringbone pattern, 200mm 'Charcoal' soldier course edging.
- CONCRETE BLOCK PAVING - to private drives: 'Keyblok' block paving by Marshalls Ltd. concrete block, 200 x 100 x 80mm, with smooth finish, chamfered, Charcoal colour, laid herringbone pattern, 200mm soldier course edging.
- CONCRETE BLOCK PAVING - to private drives: 'Keyblok' block paving by Marshalls Ltd. concrete block, 200 x 100 x 80mm, with smooth finish, chamfered, Birnle colour, laid herringbone pattern, 200mm soldier course edging.

Boundary Treatment

- BRICK WALL - 215mm wide, 1800mm high brick wall. Brick type to match existing dwellings.
- TIMBER CLOSE BOARD FENCE - to rear garden boundaries: 1800mm high timber close boarded fence.
- REAR ACCESS GATE - treated softwood timber gate (min. 15yrs life span). Incorporating steel hinges and hook latch and padlock bar.

Street Furniture

- BCP - Bin Collection Points
- B - Rear Garden Bin Store
- TIMBER SEAT - 'Hawthorn' style: 4 slab hardwood timber bench by Streammaster Ltd (01639 845394). 2000mm long, solid european oak, roof fixed into concrete footing; or equal and approved.
- LITTER BIN - 'Woodlark' timber bin with lid by Streammaster Ltd (01639 845394). 110L capacity, 25 x 80mm slats, european oak construction, galvanneal liner, roof fixed into concrete footing; or equal and approved.

Play Items

- TIMBER PLAY SCULPTURES - See schedule of Play Equipment for details.
- TIGER MULCH PLAY SURFACING - to fall zones around play equipment, cross-cross matrix shredded recycled rubber and polyurethane binder, manufactured to BSEN1177 with 3.0m critical fall height and laid in accordance with BSEN1176. Type 'Tiger Mulch Safer' Surfacing by Reddyhush Leisure Ltd. or equal and approved. To be installed to manufacturers instructions.
- SAFETY MATTING - to fall zones around play equipment, to be 0.5m/0.5m interlocking recycled PVC rubber tiles, manufactured to BS EN 1177 with 3.0m critical fall height. Type 'Grassdek' by Playdele Ltd. or equal and approved. To be installed to manufacturer's instructions.

Location Plan
- Not to Scale

Refer to CSa/2325/110 Refer to CSa/2325/111

Revision 15.12.15 AB Minor updates
Revision 04.08.15 AB Updated to reflect current housing layout

Revision/Date By Description

CSa environmental planning
e ashwell@csaenvironmental.co.uk
Project Land West of Chesterton, Oxfordshire

Dixies Bams
High Street, Ashwell
Hertfordshire, SG7 5NT
t 01462 743647
f 01462 743648

Title Hard Landscape Proposals
Sheet 2 of 2

Client Taylor Wimpey UK Ltd

Scale @ Size 1:250 @ A1 Drawn JC
Date July 2015 Checked GC
Drawing Number CSa/2325/111 Revision B