

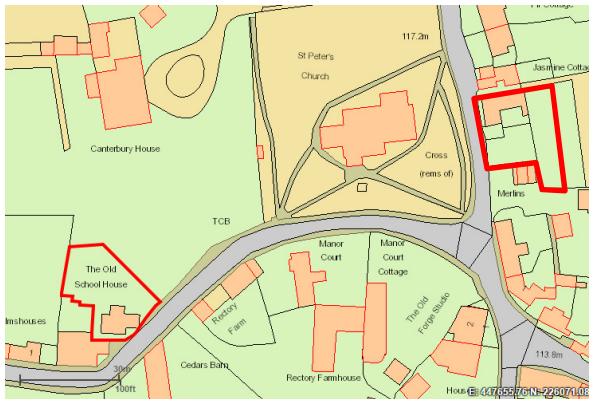
OLD SCHOOL HOUSE, NORTH SIDE, STEEPLE ASTON

97/00338/LB

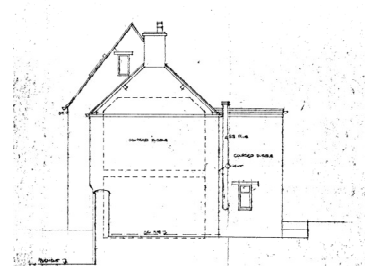
The Old School House is a Grade II listed building in the Steeple Aston Conservation Area located approximately 150m from Chancel Cottage. Planning permission was granted on 11 April 1997 for a significant two-storey extension to the rear of the property. The two-storey extension, which is clearly visible from the Conservation Area, resulted in a significant alteration to the plan form of the host building.

Listed building entry

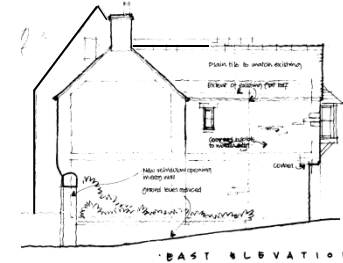
“School house, now house. Probably early C18, extended late C18/early C19 and C20. Coursed squared marlstone and limestone rubble with wooden lintels; Stonesfield-slate roof with brick gable stacks. Single-unit plan enlarged to 2 units, plus later rear wing. 2 storeys. Front of earlier marlstone range has, at first floor, leaded 2-light casements flanking a blocked window and has, at ground floor, a central casement, the entrance to right, plus a small window to left with a chamfered ashlar surround. Added lower limestone bay, set back to right, has a 2-light casement above a sash window 5 panes wide. Both end gables have stacks. C20 wing to rear. Interior not inspected. Included for group value”



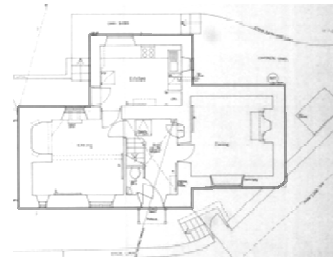
LOCATION MAP SHOWING OLD SCHOOL HOUSE IN RELATION TO CHANCEL COTTAGE



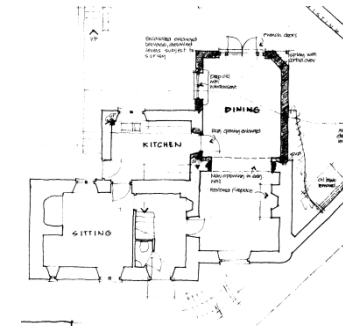
EXISTING ELEVATION



PROPOSED EVELATION



EXISTING PLAN



PROPOSED PLAN



VIEW OF EAST ELEVATION OF EXTENSION FROM THE ROAD