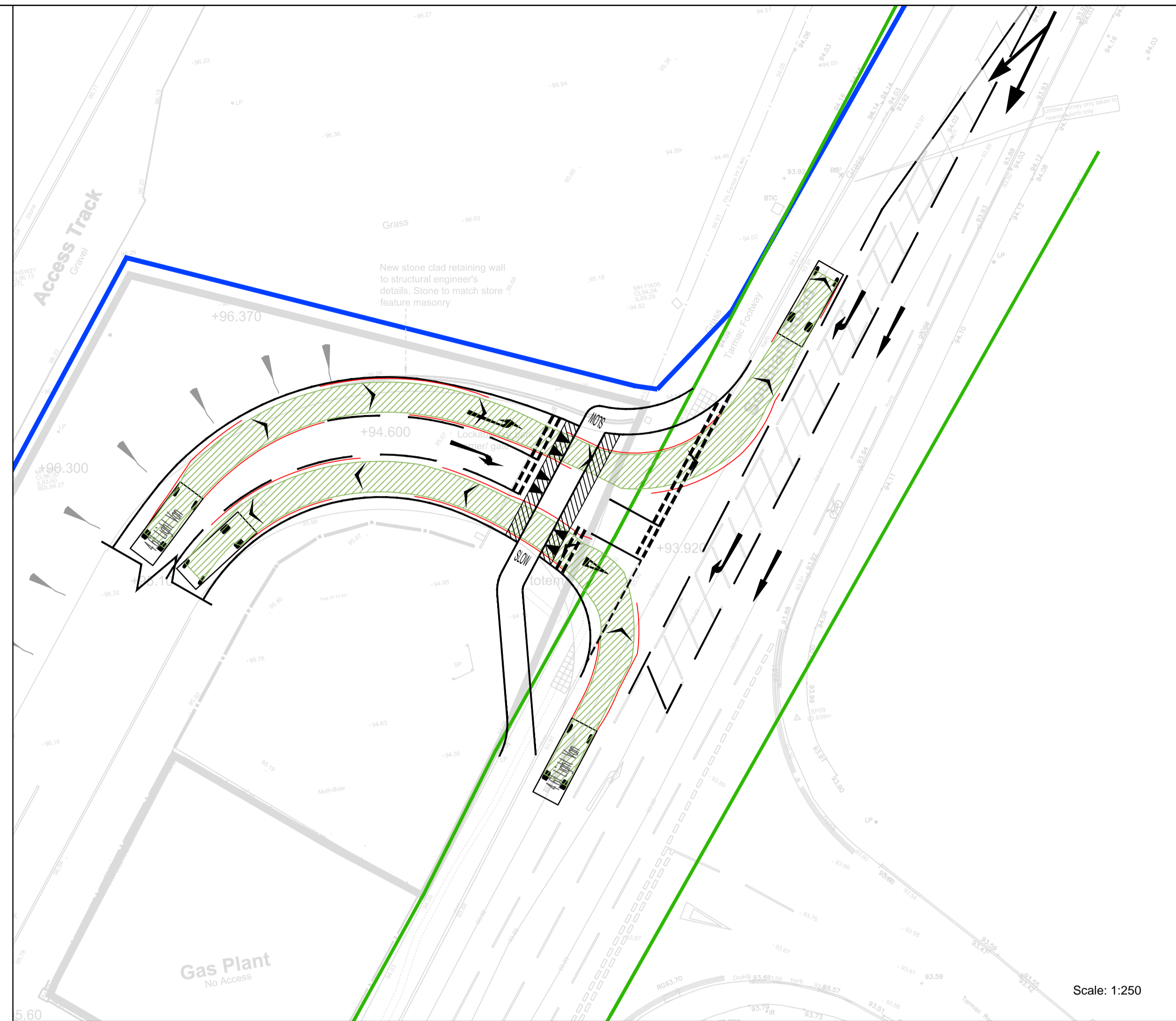


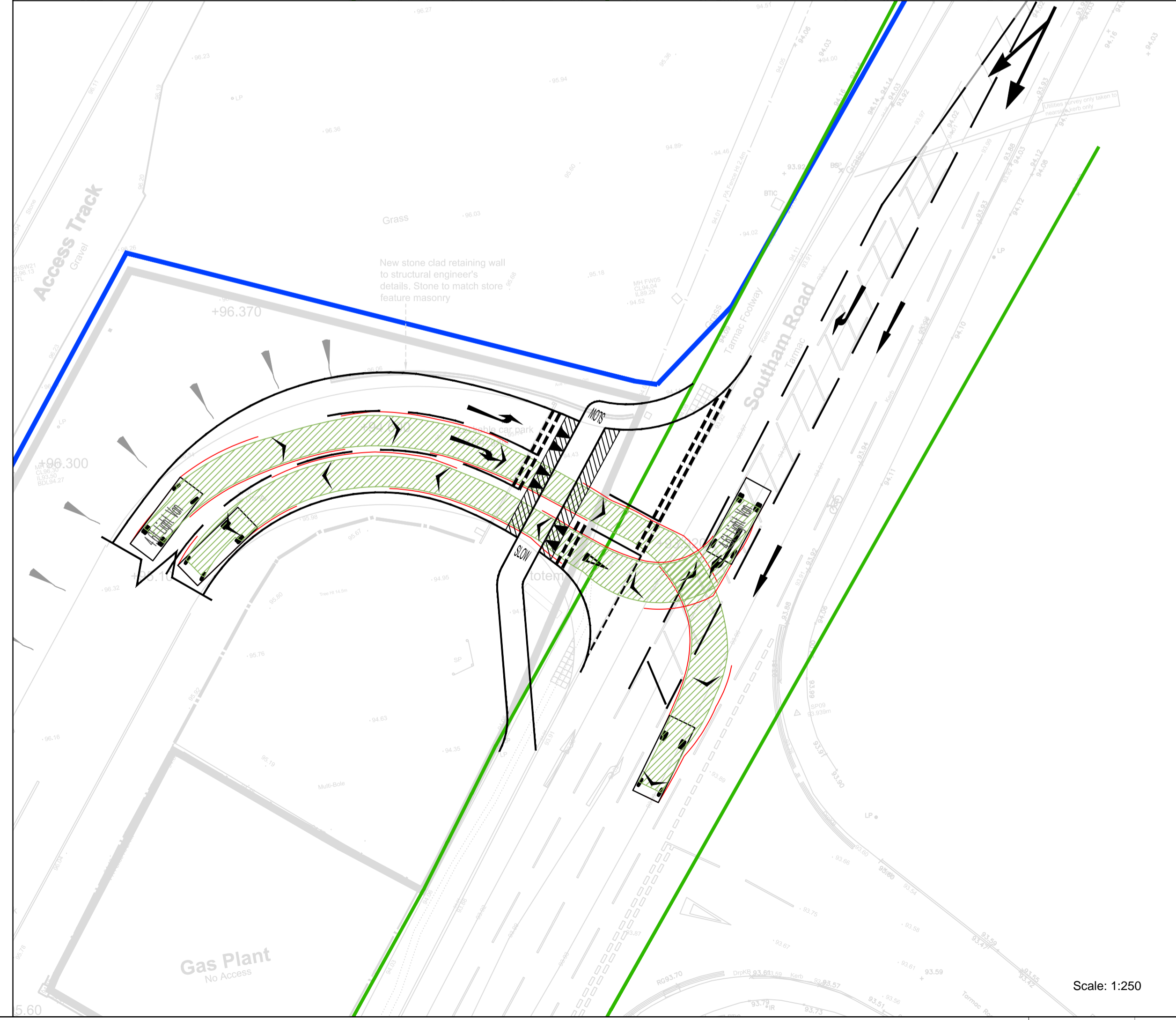


Reproduced from based upon Ordnance Survey material with the permission of Ordnance Survey © on behalf of The Controller of Her Majesty's Stationery Office. © Crown Copyright.
 Unauthorised reproduction infringes Crown Copyright and may lead to prosecution or civil proceedings.
 Licence No. 100022432 / Year of Publication: 2015 Owner/Purchaser of Mapping: PBA

Scale: 1:500



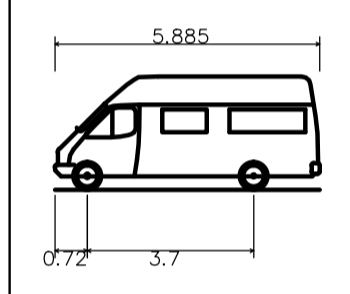
Scale: 1:250



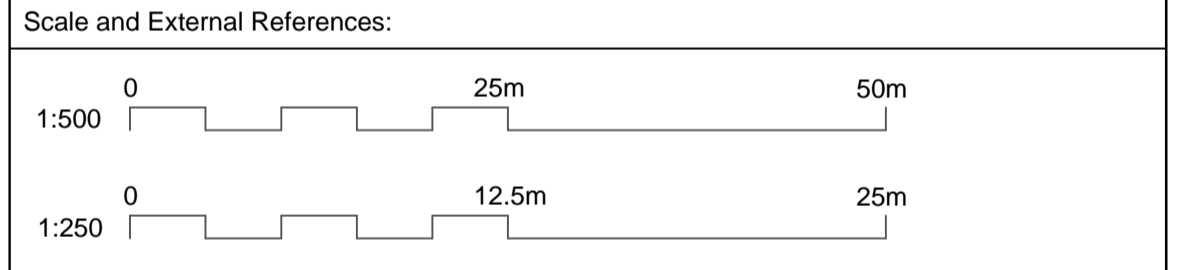
Scale: 1:250

- Notes:
- THIS DRAWING IS TO BE READ IN CONJUNCTION WITH ALL OTHER RELEVANT DOCUMENTATION.
 - DO NOT SCALE FROM THIS DRAWING, USE ONLY PRINTED DIMENSIONS.
 - ALL DIMENSIONS ARE IN MILLIMETRES, ALL CHAINAGES, LEVELS AND COORDINATES ARE IN METRES UNLESS DEFINED OTHERWISE.
 - THE CONTRACTOR SHALL CHECK ALL EXISTING DIMENSIONS AND LEVELS ON SITE AND REPORT ANY ANOMALIES TO THE ENGINEER.
 - 'MARKED UP' DRAWINGS ARE TO BE PROVIDED TO THE ENGINEER UPON COMPLETION TO ENABLE PRODUCTION OF 'AS BUILT' DRAWINGS IN ACCORDANCE WITH CONSTRUCTION (DESIGN & MANAGEMENT) 2015 REGULATIONS 22(J).

- Key:
- 2.4m X 120m visibility splay (40mph)
 - Mondelez site boundary based on Corstorphine+Wright Architects Drawing Number 14334/6000/F
 - Proposed site access and road markings
 - Indicative highway boundary (based on data supplied by OCC)



4.6t Light Van	5.885m
Overall Length	5.885m
Overall Width	2.000m
Overall Body Height	2.526m
Min Body Ground Clearance	0.299m
Track Width	1.765m
Lock to Lock Time	4.00s
Kerb to Kerb Turning Radius	6.000m



- XREFS:
- x-topo survey
 - x-Masterplan
 - x-highway boundary
 - x-new access junctions (alternative 2_Rev B)
 - x-Barwood_Capital_Logo (2).jpg
 - x-mondelez.jpg

A	AMENDED FOLLOWING CLIENT'S COMMENTS	14.10.15	BC	DP	MP
Mark	Revision	Date	Drawn	Chkd	Appd

SCALING NOTE: Do not scale from this drawing. If in doubt, ask.
 UTILITIES NOTE: The position of any existing public or private sewers, utility services, plant or apparatus shown on this drawing is believed to be correct, but no warranty to this is expressed or implied. Other such plant or apparatus may also be present but not shown. The Contractor is therefore advised to undertake his own investigation where the presence of any existing sewers, services, plant or apparatus may affect his operations.

Drawing Issue Status: **FOR INFORMATION**

**LAND AT MONDELEZ INTERNATIONAL
 SOUTHAM ROAD, BANBURY
 PROPOSED SITE ACCESS ARRANGEMENT**



Date of 1st Issue	Designed	Drawn
29.09.15	BC	BC
A1 Scale	Checked	Approved
AS SHOWN	DP	MP
Drawing Number	Revision	
26004-2001-011	A	

