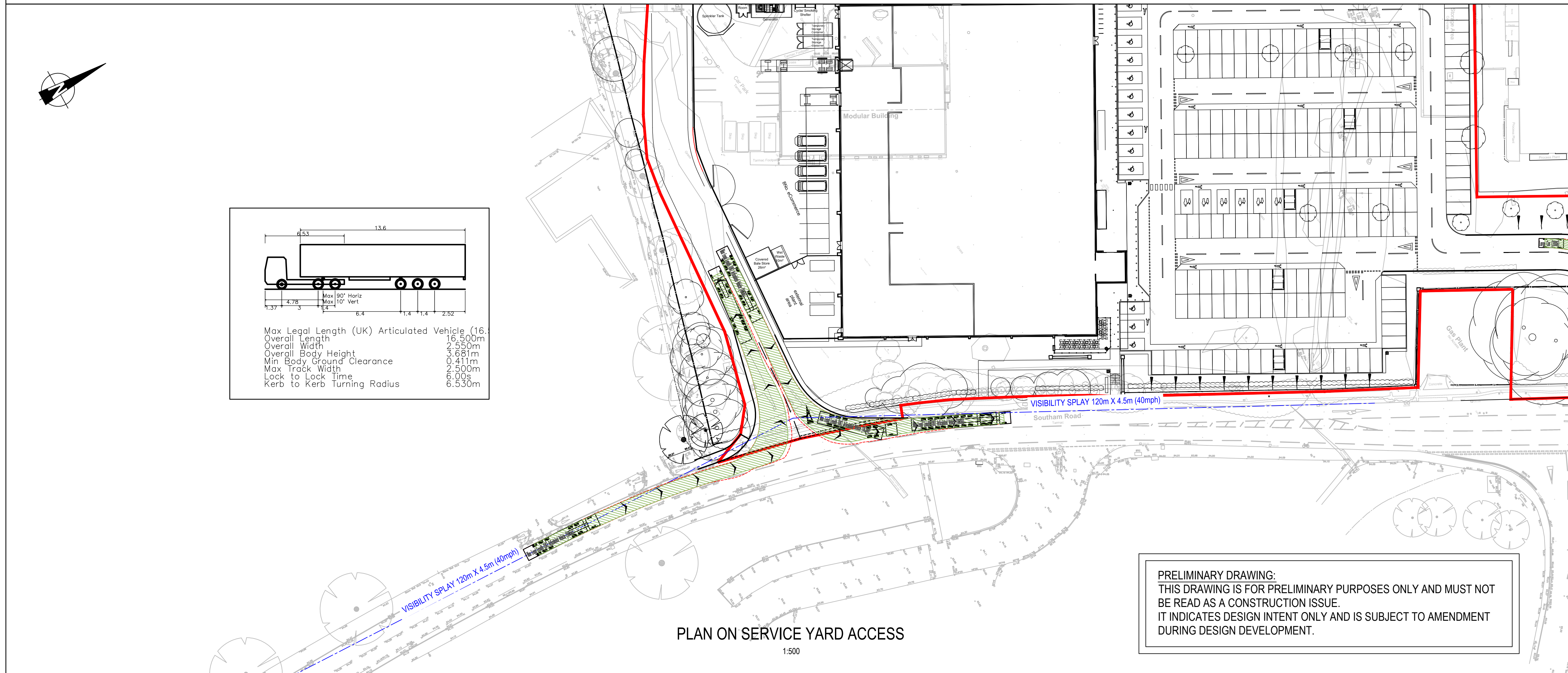


PLAN ON CAR PARK ACCESS  
1:500



PLAN ON SERVICE YARD ACCESS  
1:500

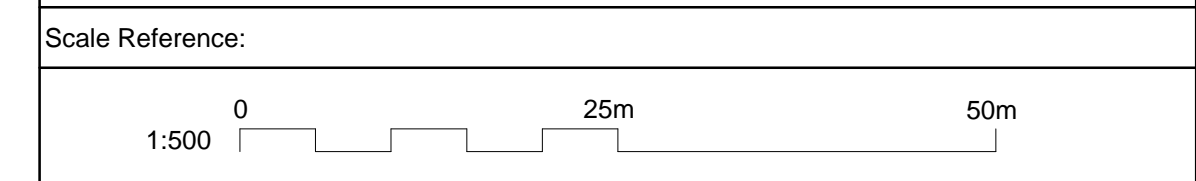
PRELIMINARY DRAWING:  
THIS DRAWING IS FOR PRELIMINARY PURPOSES ONLY AND MUST NOT  
BE READ AS A CONSTRUCTION ISSUE.  
IT INDICATES DESIGN INTENT ONLY AND IS SUBJECT TO AMENDMENT  
DURING DESIGN DEVELOPMENT.

**Key Plan:**

- Notes:**
- THIS DRAWING IS TO BE READ IN CONJUNCTION WITH ALL OTHER RELEVANT DOCUMENTATION.
  - DO NOT SCALE FROM THIS DRAWING. USE ONLY PRINTED DIMENSIONS.
  - ALL DIMENSIONS ARE IN MILLIMETRES. ALL CHAINAGES, LEVELS AND COORDINATES ARE IN METRES UNLESS DEFINED OTHERWISE.
  - THE CONTRACTOR SHALL CHECK ALL EXISTING DIMENSIONS AND LEVELS ON SITE AND REPORT ANY ANOMALIES TO THE ENGINEER.
  - THIS DRAWING IS TO BE READ IN CONJUNCTION WITH THE PROJECT HEALTH & SAFETY FILE FOR ANY IDENTIFIED POTENTIAL RISKS.
  - 'MARKED UP' DRAWINGS ARE TO BE PROVIDED TO THE ENGINEER UPON COMPLETION TO ENABLE PRODUCTION OF 'AS BUILT' DRAWINGS IN ACCORDANCE WITH CONSTRUCTION (DESIGN & MANAGEMENT) 2007 REGULATIONS 22(J).
  - JUNCTION VISIBILITY SPLAYS BASED ON A SIGN POSTED SPEED OF 40mph:  
Y DISTANCE 120m, X DISTANCE 4.5m.
  - PROPOSED SITE LAYOUT BASED ON THE MASTERPLAN BY CORSTORPHINE + WRIGHT.  
PROPOSED SITE PLAN CONSTRAINTS OVERLAY, DRAWING NUMBER 14334-6000 Rev F, DATED MAY 2015.

**Key:**

- VISIBILITY SPLAY
- PLANNING APPLICATION BOUNDARY



**XREFS:**  
 x-OS Data Combined  
 x-OS Data Combined Rotated  
 x-topo survey  
 x-Masterplan  
 x-new access junctions (alternative 6)  
 x-Barwood\_Capital\_Logo (2).jpg  
 x-mondelez.jpg

Mark	Revision	Drawn	Date	Chkd
E	MASTERPLAN UPDATED.	GM	06.05.15	AF
D	MASTERPLAN UPDATED. PLANNING BOUNDARY SHOWN.	GM	21.04.15	ET
C	SWEPT PATH FOR RIGHT HAND TURN FROM CAR PARK ADDED	GM	19.03.15	AF
B	MASTERPLAN UPDATED. PROPOSED LANDSCAPING ADDED.	GM	16.03.15	AF
A	4 X 4 TRACKING CHANGED TO A BOX VAN PROFILE. RIGHT-HAND TURN LANE WIDTH AMENDED TO 3m.	GM	22.12.14	AF

**SCALING NOTE:** Do not scale from this drawing. If in doubt, ask.  
**UTILITIES NOTE:** The position of any existing public or private sewers, utility services, plant or apparatus shown on this drawing is believed to be correct, but no warranty to this is expressed or implied. Other such plant or apparatus may also be present but not shown. The Contractor is therefore advised to undertake his own investigation where the presence of any existing sewers, services, plant or apparatus may affect his operations.

**Drawing Issue Status**  
**PRELIMINARY**

**NEW WAITROSE STORE  
 SOUTHAM ROAD, BANBURY  
 PROPOSED ACCESS JUNCTIONS &  
 SWEPT PATH ANALYSIS**

<b>Client</b> barwoodcapital Delivering Real Property Potential		 Offices throughout the UK and Europe <b>www.peterbrett.com</b> © Peter Brett Associates LLP BIRMINGHAM Tel: 0121 633 2900
Date of 1st Issue 09.12.14	Drawn by GM	Drawing Number <b>26004-2001-001</b>
A1 Scale 1:500	Checked by AF	
Drawing Number <b>26004-2001-001</b>		Revision <b>E</b>