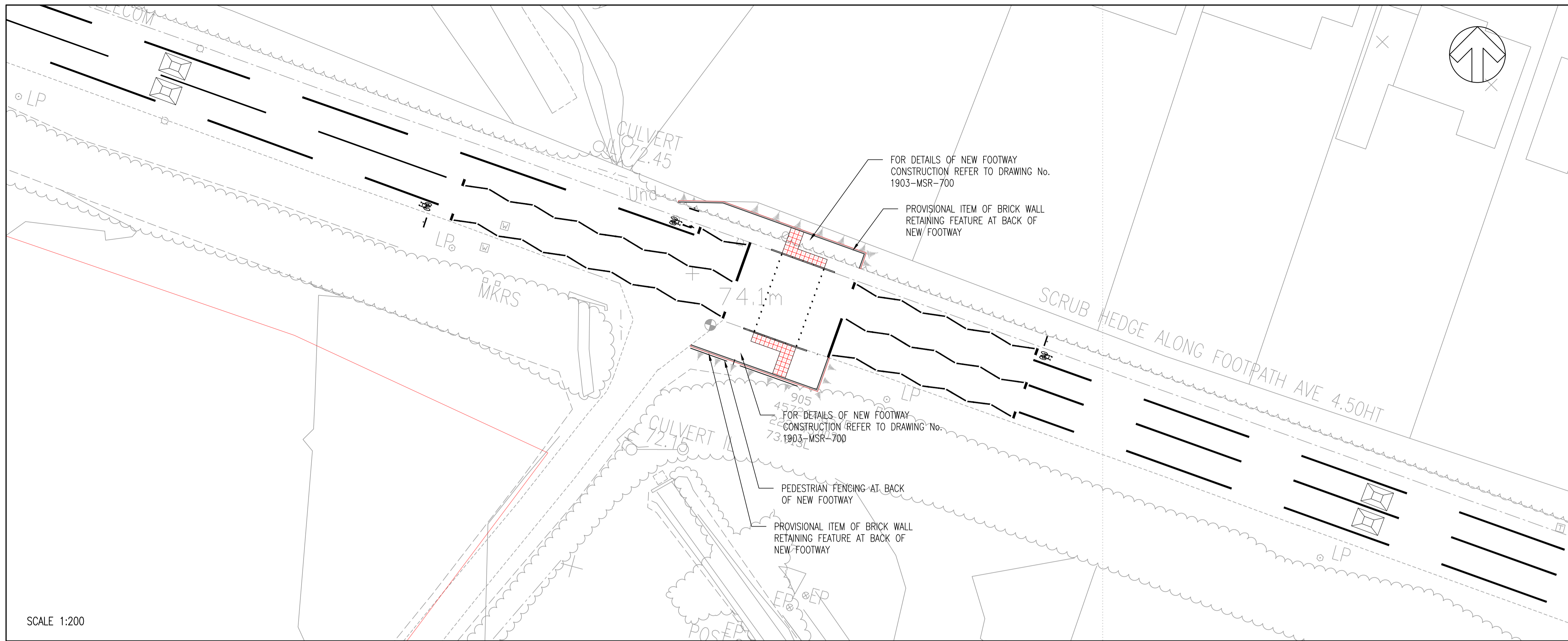


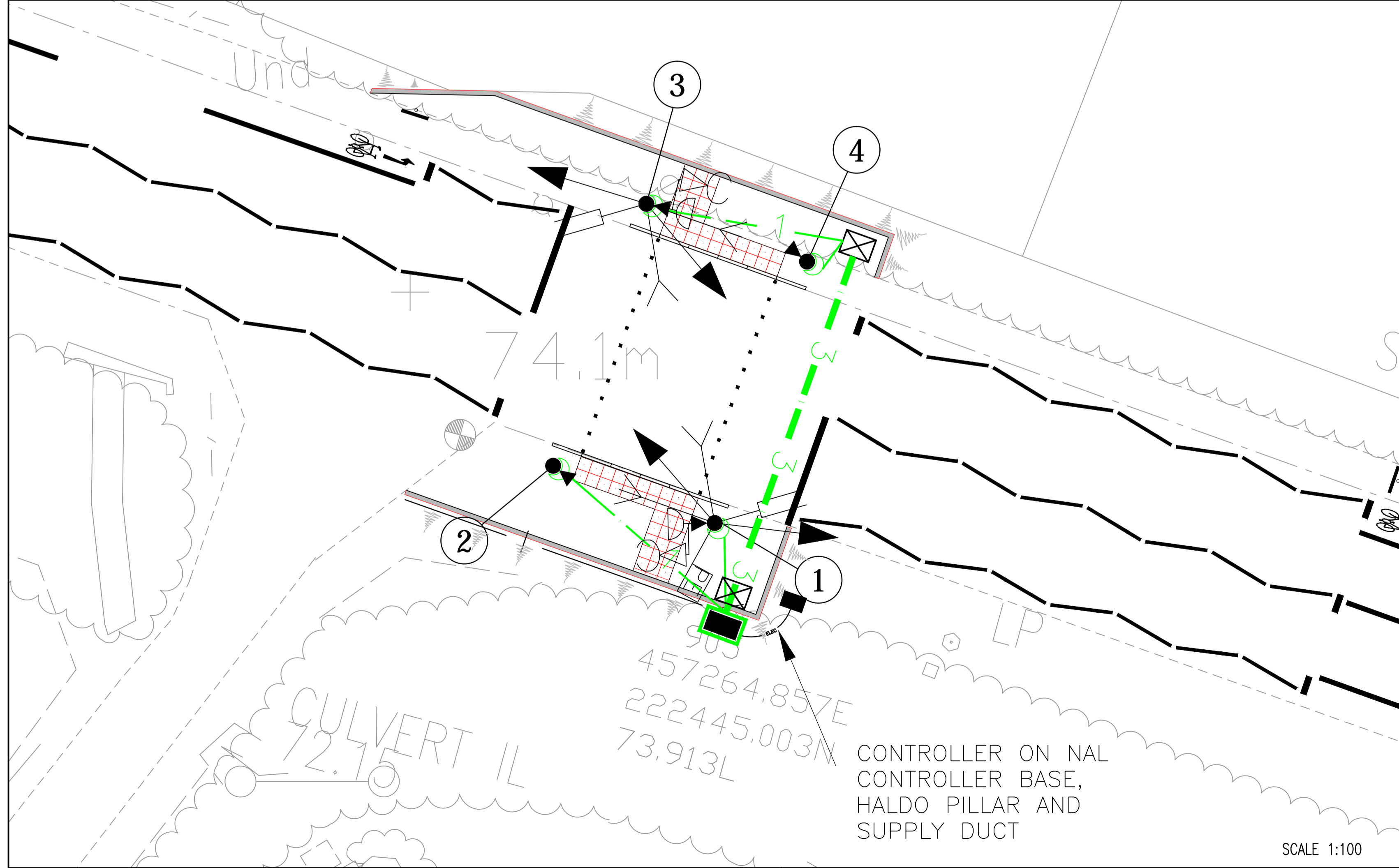
DO NOT SCALE

NOTES/4444 STH/ND OFFSLIP

1. ALL NEW DUCTING SHALL BE POLYPROPYLENE, ORANGE IN COLOUR, SMOOTH BORE WITH 'TRAFFIC SIGNALS' IMPRINTED ON THE DUCT. DRAW CORDS SHALL BE INCLUDED IN ALL DUCTS.
2. ALL NEW DUCT CHAMBERS TO BE NAL LTD STAKKA BOXES AS APPROVED BY OCC, AND WILL HAVE A GRADE B COMPOSITE LID WITH STEEL FRAMES. BOXES TO BE INSTALLED TO OCC STANDARD DETAILS SHOWN IN KEY OR MANUFACTURERS INSTRUCTIONS. CHAMBERS IN VERGE SHALL HAVE 1M HARD SURROUND FOR SIGNAL MAINTENANCE.
3. ONLY NAL LTD POLE RETENTION SOCKETS TO BE USED UNLESS OTHERWISE APPROVED BY OCC. TYPE AS SPECIFIED ON SETTING OUT SCHEDULE. SOCKETS TO BE INSTALLED TO OCC STANDARD DETAILS SHOWN IN KEY OR MANUFACTURERS INSTRUCTIONS. POLE SOCKETS IN VERGE SHALL HAVE 1M HARD SURROUND FOR SIGNAL MAINTENANCE.
4. THE POLE SETTING OUT DETAILS ARE ONLY A GUIDE, EXACT POSITIONS OF POLES, DUCTS, ETC. SHALL BE DETERMINED ONSITE BY THE ENGINEER.
5. DUCTING FROM RS115 NAL UNITS TO ADJACENT CHAMBER AND DETECTOR LINKS ON APPROACHES TO BE 1x100MM UNLESS INDICATED OTHERWISE.
6. TOUCAN NEARSIDE UNITS SHALL HAVE NARROW FIELD OF VIEW MASKS ON ALL.
7. ALL SIGNAL HEADS TO BE ELV LED TYPE.
8. ALL ABOVE GROUND DETECTION SHALL BE MOUNTED ON BRACKETS AND SHALL BE POSITIONED SO AS TO FUNCTION IN ITS PROPER MANNER.
9. THE PHOTOCELL FOR DIMMING SHALL BE LOCATED ON A SIGNAL HEAD WHERE IT WILL NOT BE AFFECTED BY STREET LIGHTING.
10. COMMUNICATIONS TO THE CONTROLLER WILL BE VIA GSM, TO BE AGREED WITH OCC.
11. BLACK 50MM DUCT TO BE INSTALLED BETWEEN HALDO PILLAR AND CONTROLLER FOR ELECTRICITY SUPPLY. CONTRACTOR TO ARRANGE SUPPLY.
12. SIGN DIAG. 7014 'NEW TRAFFIC SIGNALS AHEAD' TO BE INSTALLED ON APPROACHES. MAIN CONTRACTOR TO REMOVE SIGNS 3 MONTHS FOLLOWING SITE COMMISSIONING.
13. DRAWING TO BE READ IN CONJUNCTION WITH THE WORKS SPECIFICATION.
14. SCHEME WILL BE CARRIED OUT IN ACCORDANCE WITH DMRB CODE OF PRACTICE.



SCALE 1:200



SCALE 1:100

- KEY:
- RAG ELV LED PRIMARY
 - TOUCAN NEARSIDE SIGNAL AND DEMAND UNIT WITH TACTILE (SEE NOTE 6)
 - PEDESTRIAN DEMAND UNITS (SEE NOTE 6)
 - ON-CROSSING DETECTOR
 - KERBSIDE DETECTOR
 - ABOVE GROUND DETECTOR
 - SIGNAL POLE & POLE NO.(SEE NOTE 4)
 - SOLAR CELL
 - CONTROLLER/MEC AND NAL CONTROLLER BASE
 - FEEDER PILLAR
 - 100MM DUCT No. AS INDICATED. (SEE NOTE 5)
 - NAL RETENTION SOCKET
 - NAL STAKKA BOX (600mmx450mm)
 - TACTILE PAVING (RED)
 - PEDESTRIAN FENCING AT BACK OF FOOTWAY
 - BRICK WALL RETAINING FEATURE

POLE AND SOCKET TYPE AND SETTING OUT DETAILS				
POLE NUMBER	POLE TYPE	DISTANCE-POLE FACE TO STOP LINE	DISTANCE-POLE FACE TO KERB EDGE	NAL RETENTION SOCKET TYPE
1	4m Swan neck	0.5m to studs	0.5m	RS115 Duck Foot
2	2m Short pole	0.5m to studs	0.5m	RS115 Duck Foot
3	4m Swan neck	0.5m to studs	0.5m	RS115 Duck Foot
4	2m Short pole	0.5m to studs	0.5m	RS115 Duck Foot

REV	DATE	BY	DESCRIPTION	CHK	APP
D	09/09/15	TRK	LAYOUT AMENDED	PAR	AC
C	26/07/15	TRK	CONTROLLER POSITION AND NOTE REVISED	PAR	AC
B	07/10/14	PAR	LAYOUT AMENDED	PAR	AC
A	31/7/14	PAR	FIRST ISSUE OF TOUCAN CROSSING	PAR	AC

DRAWING STATUS: FOR INFORMATION ONLY

Mountbatten House, Basing View, Basingstoke, Hampshire RG21 4JH
Tel: +44 (0)1256 318800 Fax: +44 (0)1256 318700
<http://www.wspgroup.com>

CLIENT: COUNTRYSIDE PROPERTIES

ARCHITECT:

PROJECT: BICESTER KINGSMERE

TITLE: MIDDLETON STONEY ROAD TOUCAN CROSSING INSTALLATION

SCALE @ A1	CHECKED	APPROVED
AS SHOWN	PAR	AD
CAD FILE: 1903-MSR-1400	DESIGN/DRAWN: PAR	DATE: October 2014
PROJECT No: 11011903	DRAWING No: 1903/MSR/1400	REV: D

© WSP Group plc

S:\BICESTER NEW TOWN\DRAWINGS\AUTOCAD\MS-TC MIDDLETON STONEY TRAFFIC CALMING\278 - DETAILED DESIGN\1400 SERIES SIG - SIGNALS\1903-MSR-1400.DWG 09/09/2015 14:31:54 Kittingback, Tim