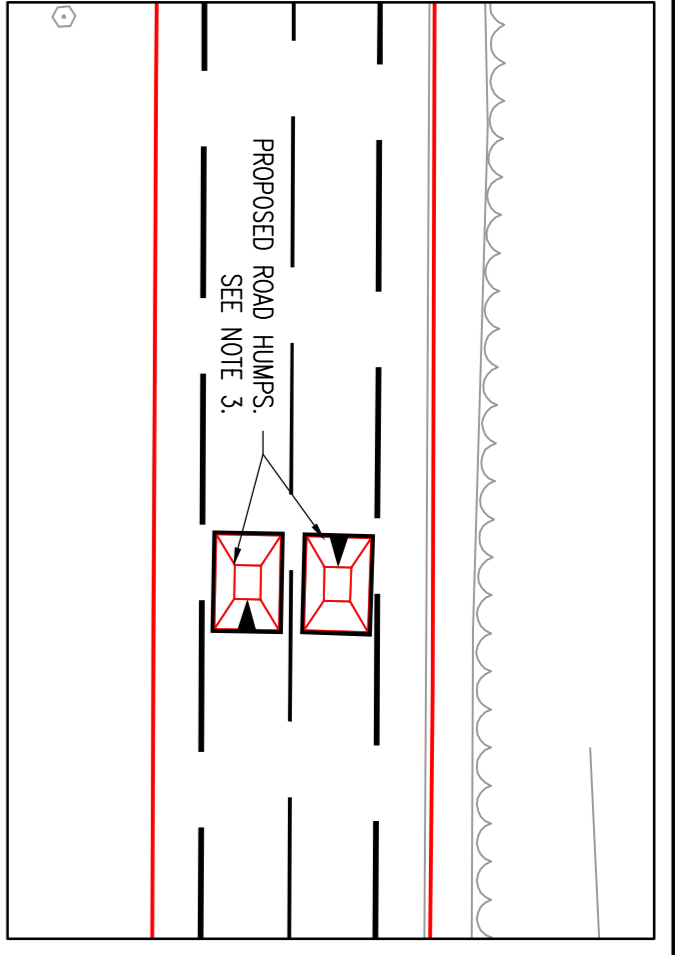
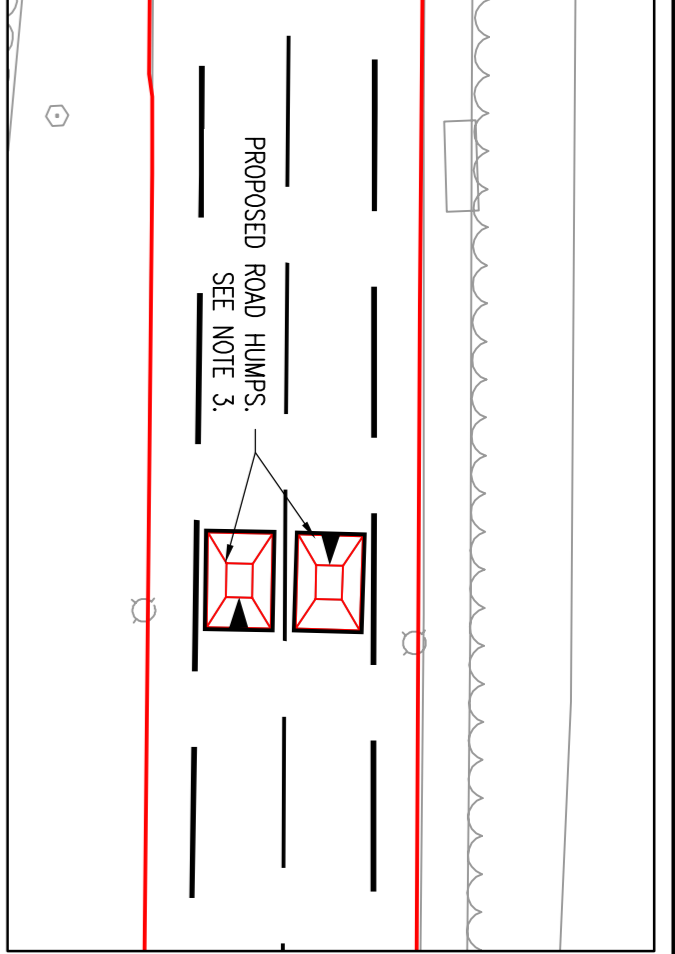


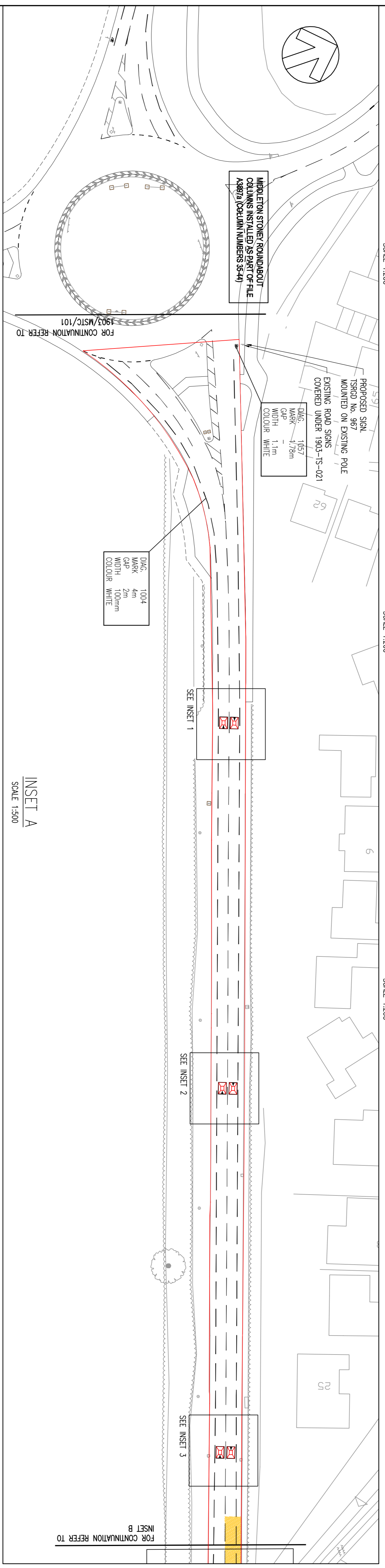
INSET 1
SCALE 1:200



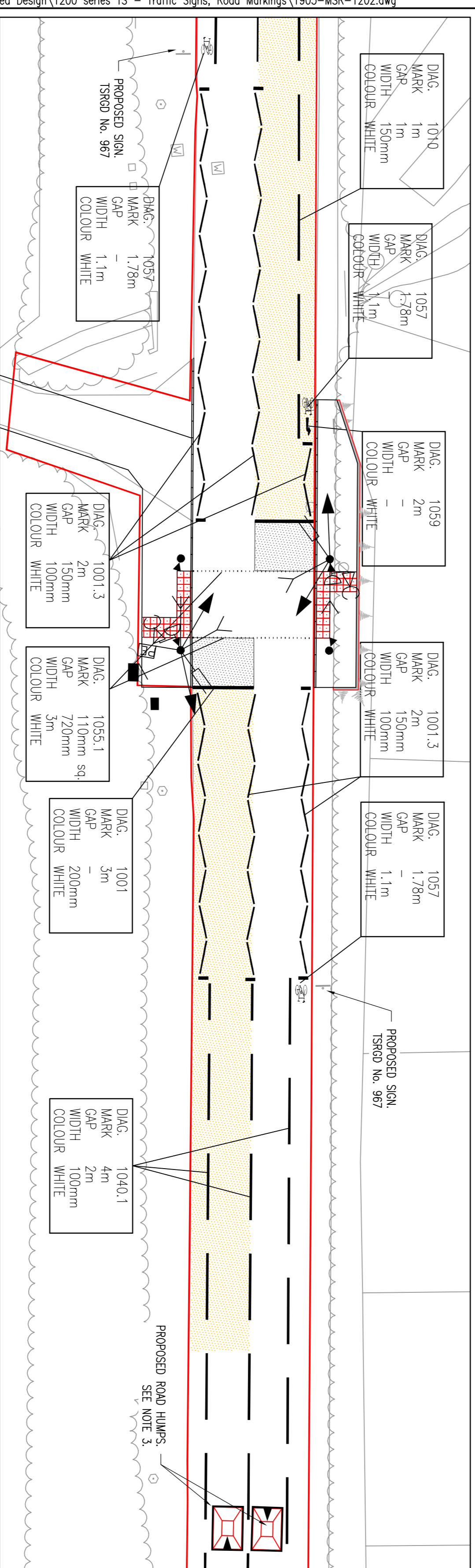
INSET 2
SCALE 1:200



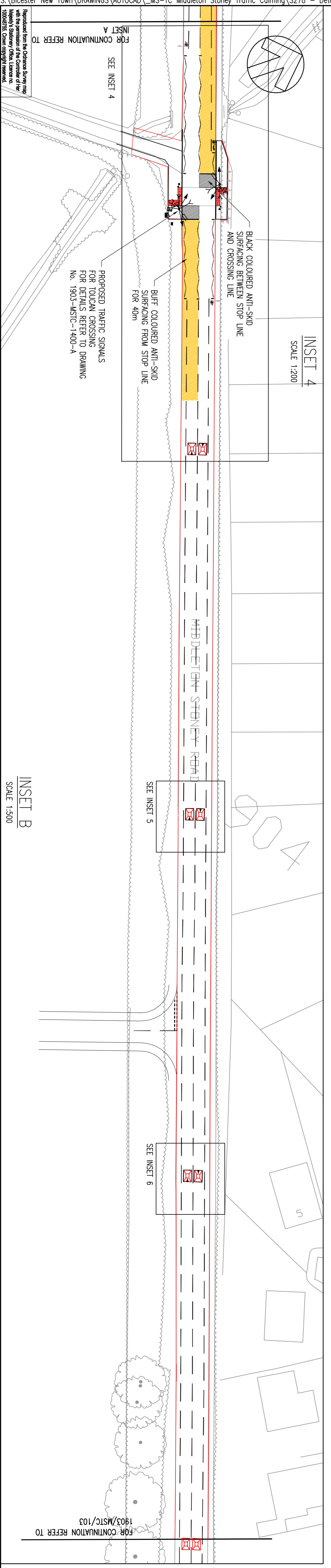
INSET 3
SCALE 1:200



INSET A
SCALE 1:500



INSET 4
SCALE 1:200



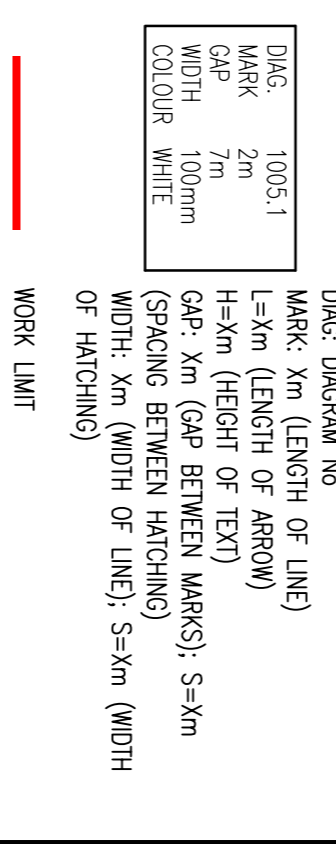
INSET B
SCALE 1:500

DO NOT SCALE

NOTES

1. ALL DIMENSIONS ARE IN MILLIMETRES UNLESS OTHERWISE STATED.
2. MARKINGS ARE SHOWN INDICATIVELY ONLY. ALL TRAFFIC MARKINGS AND SIGNS SHALL BE IN ACCORDANCE WITH THE TRAFFIC SIGNS REGULATIONS AND GENERAL DIRECTIONS 2002 AND ASSOCIATED AMENDMENTS.
3. FOR PROPOSED ROAD HUMPS CONSTRUCTION AND MARKING DETAILS REFER TO DRAWING SD/101. FOR TYPICAL SIGNAGE LOCATIONS AND POST/FOUNDATION DETAILS REFER TO DRAWING SD/102.
4. CONTRACTOR TO LAYSE WITH OCC TO ESTABLISH MAINTENANCE NUMBERS AND MARK SIGNS ACCORDING TO OCC APPROVAL.
5. ALL ROAD MARKINGS TO BE THERMO PLASTIC SPEEDED WITH RETRO REFLECTIVE GLASS BEADS & TO COMPLY WITH BS 5322 & BS EN 1436.
6. THIS DRAWING IS TO BE READ IN CONJUNCTION WITH ALL DRAWINGS AND NOTES FROM THE WSP DESIGN PACK. THE CONTRACTOR IS TO SATISFY THEMSELVES THAT THERE ARE NO DISCREPANCIES WITHIN THE DESIGN PACK BEFORE COMMENCING ON SITE. IF IN DOUBT ASK.
7. THE MOUNTING HEIGHTS OF ALL SIGNS TO BE:
2.1m - FOOTWAY/VERGE UNLESS OTHERWISE STATED
2.4m - CYCLEWAY UNLESS OTHERWISE STATED
8. ALL SIGNS TO HAVE A MINIMUM LATERAL CLEARANCE OF 450mm FROM THE KERB FACE.
9. SIGN NUMBERING POSITIONS INDICATE DIRECTION OF SIGN FACE FROM THE KERB FACE.
10. SIGNS & SUPPLEMENTARY PLATES SHALL BE RETROREFLECTIVE TO CLASS 2.
11. MARKINGS TO DIAG 1004 IS TO STOP 150mm FROM PEDESTRIAN REFUGE ISLANDS.
12. 'NEW ROAD LAYOUT AHEAD' TRIP SIGNS REQUIRED ON ALL ENTRIES TO THE TRAFFIC CALMING ON MIDDLETON STONEY ROAD. REQUIRED FOR 6 MONTHS THEN REMOVED.
13. ALL CENTRE LINES TO BE REGRESSED AND RENEWED AT THE SAME TIME ADVISORY CYCLE LINES ARE TO BE MARKED.

KEY



ISSUED FOR CONSTRUCTION

REV	DATE	BY	DESCRIPTION	CHK	APP
A	02/11/14	TRK	DETAILED DESIGN - PREP ISSUE	TRK	TRK
B	03/09/15	SKR	AMENDED TO OCC COMMENTS	SKR	SKR

WSP

Mountain House, Basing View, Basingstoke, Hampshire RG21 4HU
Tel: +44 (0)1256 318800 Fax: +44 (0)1256 318700
http://www.wspgroup.com

CLIENT: **COUNTRYSIDE PROPERTIES (BICESTER) LTD.**

PROJECT: **BICESTER KINGSWERE**

TITLE: **MIDDLETON STONEY ROAD TRAFFIC CALMING SCHEME - SIGNS AND MARKINGS SHEET 2 OF 3**

SCALE @: AS SHOWN	CHECKED: AD	APPROVED: AD
CAD FILE: 1903-MSR-202	ISSUED DATE: TRK	DATE: November 14
PROJECT NO: 11011903	DRAWING NO: 1903MSR/1202	REV: B

© WSP Group plc