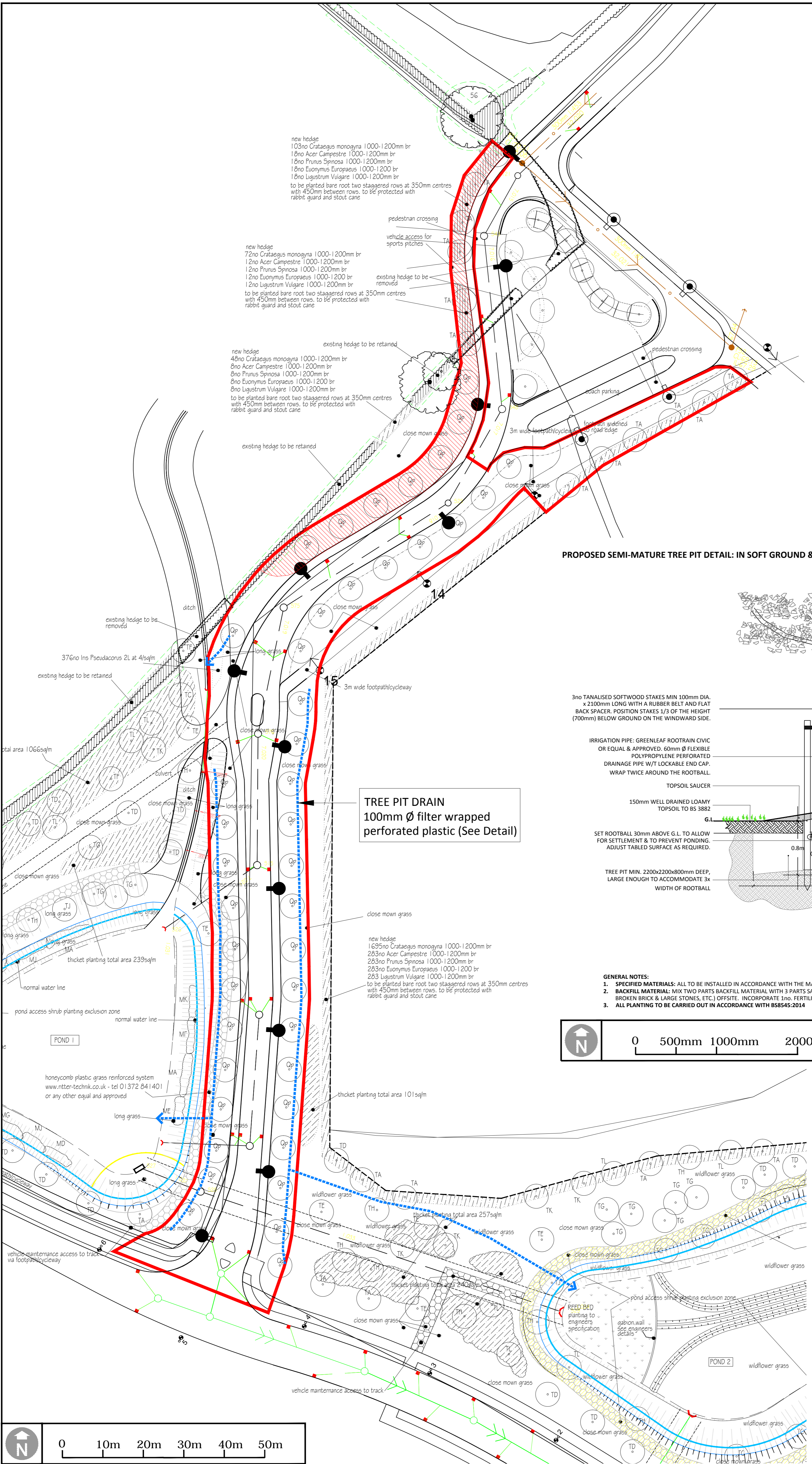
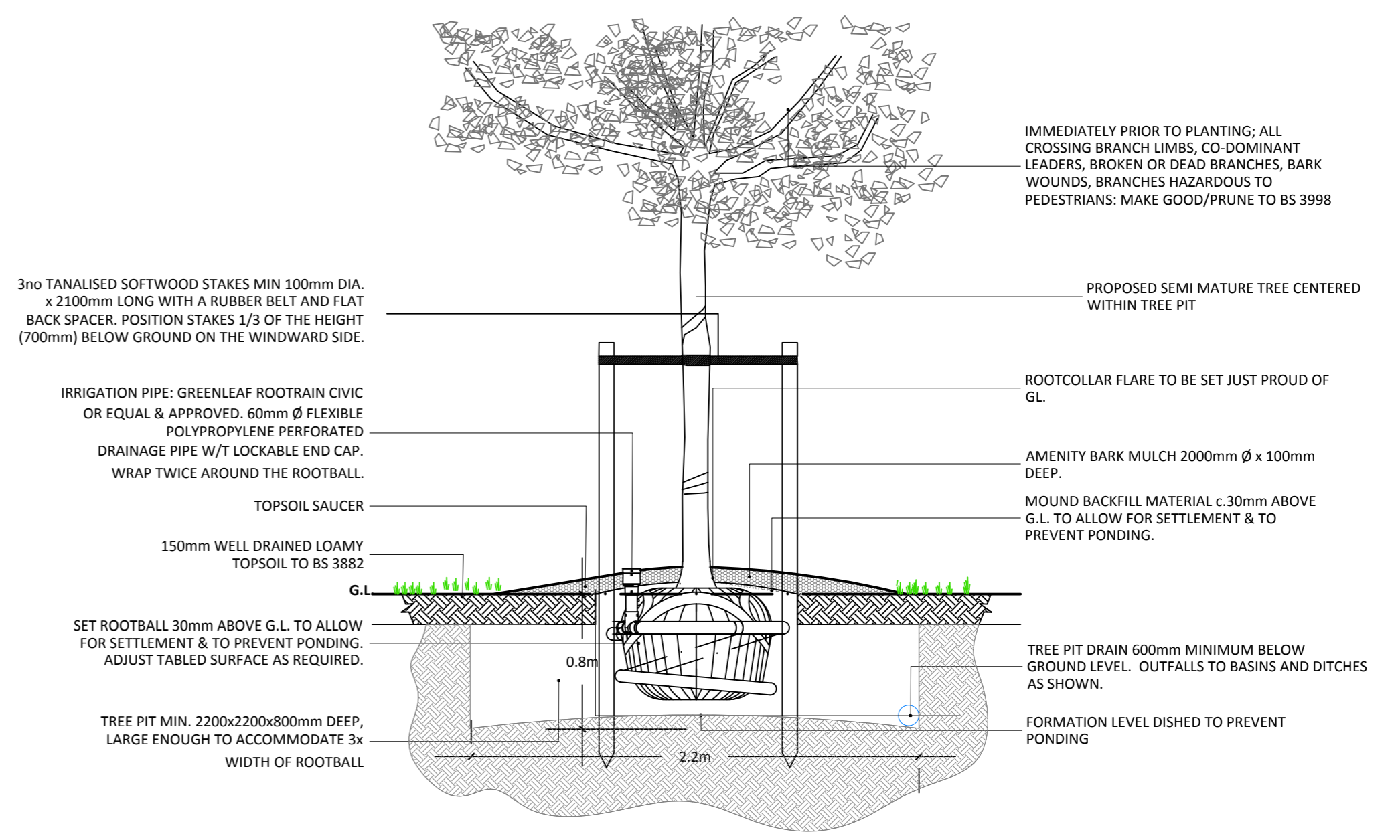


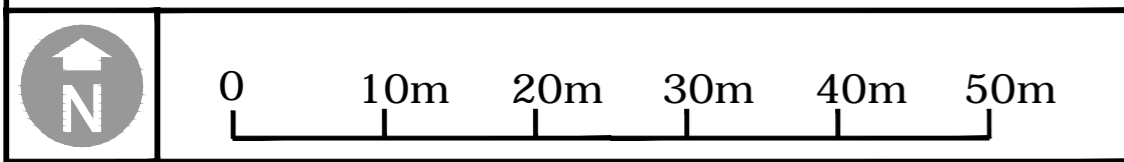
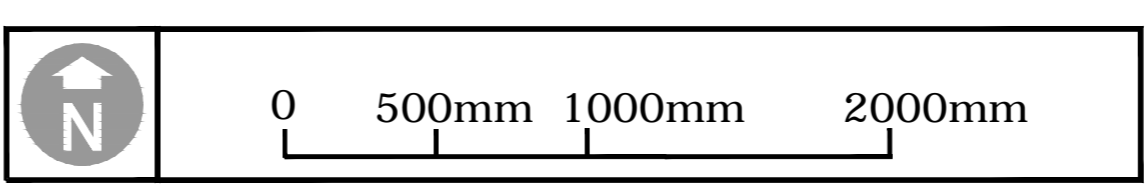
QUERCUS PALUSTRIS (Qp) 20-25CM TO REPLACE ALL EXISTING QUERCUS ROBUR



PROPOSED SEMI-MATURE TREE PIT DETAIL: IN SOFT GROUND &/OR GRASSED AREAS 1:25



TREE PIT DRAIN
100mm Ø filter wrapped perforated plastic (See Detail)



| | | | | | |
|--|----------------------|--|--|--|--|
| | APPLICATION BOUNDARY | | PROPOSED TREE - Quercus palustris 20-25cm | | TREES IN THIS AREA TO BE INSTALLED, MAINTAINED AND ADOPTED BY CDC |
|--|----------------------|--|--|--|--|

| | | | |
|--|---------------------------------|---|-----------------|
| Drawing Revision | Client | Drawing Title | Drawing Status |
| A 030315 Tree Species changed and addition of tree pit drain | COUNTRYSIDE PROPERTIES (UK) Ltd | SL 25 AVENUE TREE TYPE AMENDMENTS | PLANNING |
| B 220615 Amendments to CDC comments | | - Drawing referenced from David Fountain Designs Ltd - DFD/BIC/L9 | |

| | | | |
|-----------|-----------------|------------|-----------|
| Project | Scale | Sheet Size | Date |
| KINGSMERE | 1:500 | A1 | JULY 2014 |
| | Drawing No. | Revision | |
| | 2226/007 | B | |

DAVID JARVIS ASSOCIATES
 DAVID JARVIS ASSOCIATES LIMITED
 1 Tennyson Street Swindon Wiltshire SN1 5DT
 Tel: 01793 612173 Fax: 01793 613625
 Email: mail@davidjarvis.biz