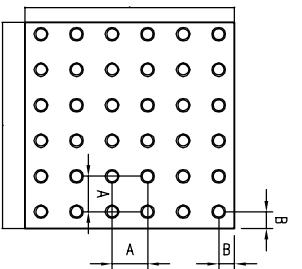


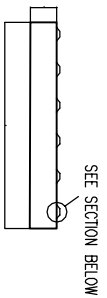
NOTES.

1. TACTILE PAVING TO BE LAID SO AS TO DIRECT PEDESTRIANS ACROSS THE ROAD WILL NOT NECESSARILY BE AT 90° TO THE LINE OF KERB.
2. FLUSH KERB IS TYPE 4 DROPPED KERB LAID FLUSH WITH THE CARRIAGEWAY SURFACE OR WITH A MAXIMUM UPSTAND OF 6mm.
3. TEXTURED SLABS TO BE COLOURED RED AT CONTROLLED CROSSINGS AND BUFF COLOURED AT UNCONTROLLED CROSSINGS AS DETR MOBILITY UNIT 'GUIDANCE ON THE USE OF TACTILE PAVING SURFACES'.
4. TEXTURED SLABS TO BE BEDDED ON 25mm THICK 3:1 CEMENT MORTAR ON 150mm THICK TYPE 1 SUB-BASE TO CI 803
5. INSPECTION CHAMBER AND MANHOLE COVERS WITHIN AREA OF TACTILE PAVING TO BE FITTED WITH RECESSED COVERS INLAID WITH TACTILE PAVING.
6. ORIENTATION OF THE PEDESTRIAN DEMAND UNIT IS FACING INTO THE CROSSING. WHEN THE PEDESTRIAN DEMAND UNIT IS ASSOCIATED WITH A NEARSIDE PEDESTRIAN HEAD THEN BOTH UNITS ARE ANGLED AT 20° FROM THE KERBLINE.
7. THE PEDESTRIAN DEMAND UNIT IS TO BE PLACED AT 1.0m FROM THE GROUND LEVEL TO THE UNDERSIDE OF THE UNIT AS MEASURED FROM THE FACE OF THE PUSH BUTTON.

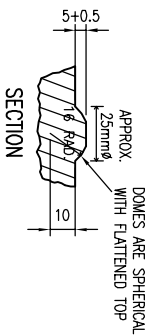
MODULE TYPE	SIZE	PITCH DIMENSION(mm)	
		A	B
A	400 x 400	66.8	33



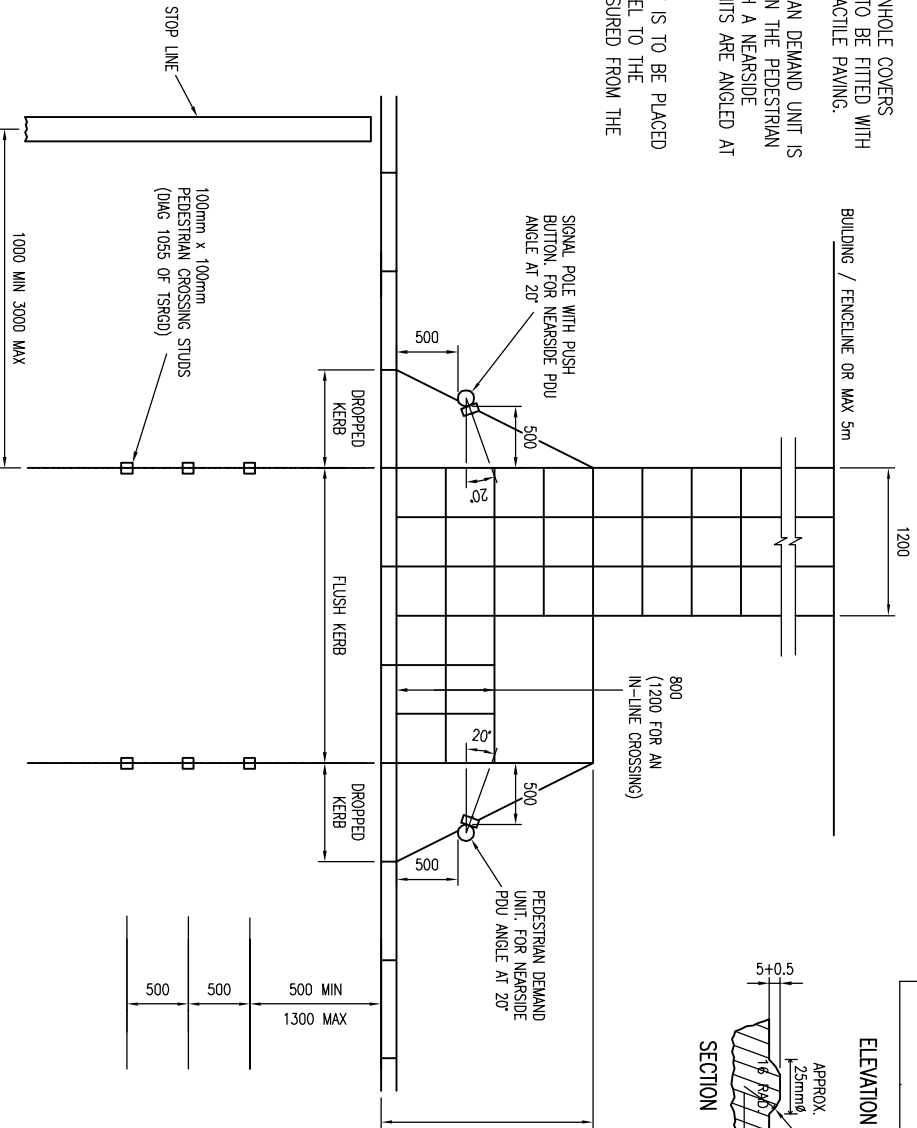
PLAN



ELEVATION



SECTION



DO NOT SCALE

REV	DATE	BY	ISSUED	DESCRIPTION	CHK	APP
A	18/06/09	GTL	ISSUED		PAR	FOR

DRAWING STATUS:


  
**WSP**

Mountbatten House, Basing View, Basingstoke, Hampshire RG21 4HU  
 Tel: +44 (0)1256 318800 Fax: +44 (0)1256 318700  
<http://www.wspgroup.com>

CLIENT: COUNTRYSIDE PROPERTIES

ARCHITECT:

PROJECT:

SOUTH WEST BICESTER

TITLE:

TACTILE PAVING - 'T' LAYOUT

SCALE @ SIZE:	CHECKED:	APPROVED:
NTS	PAR	PAR

CAD FILE:	DESIGN/DRAWN:	DATE:
1903-SD-308 (TAC)	GTL	September 2014

PROJECT No:	DRAWING No:	REV:
11011903	1903/SD/308	A