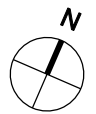
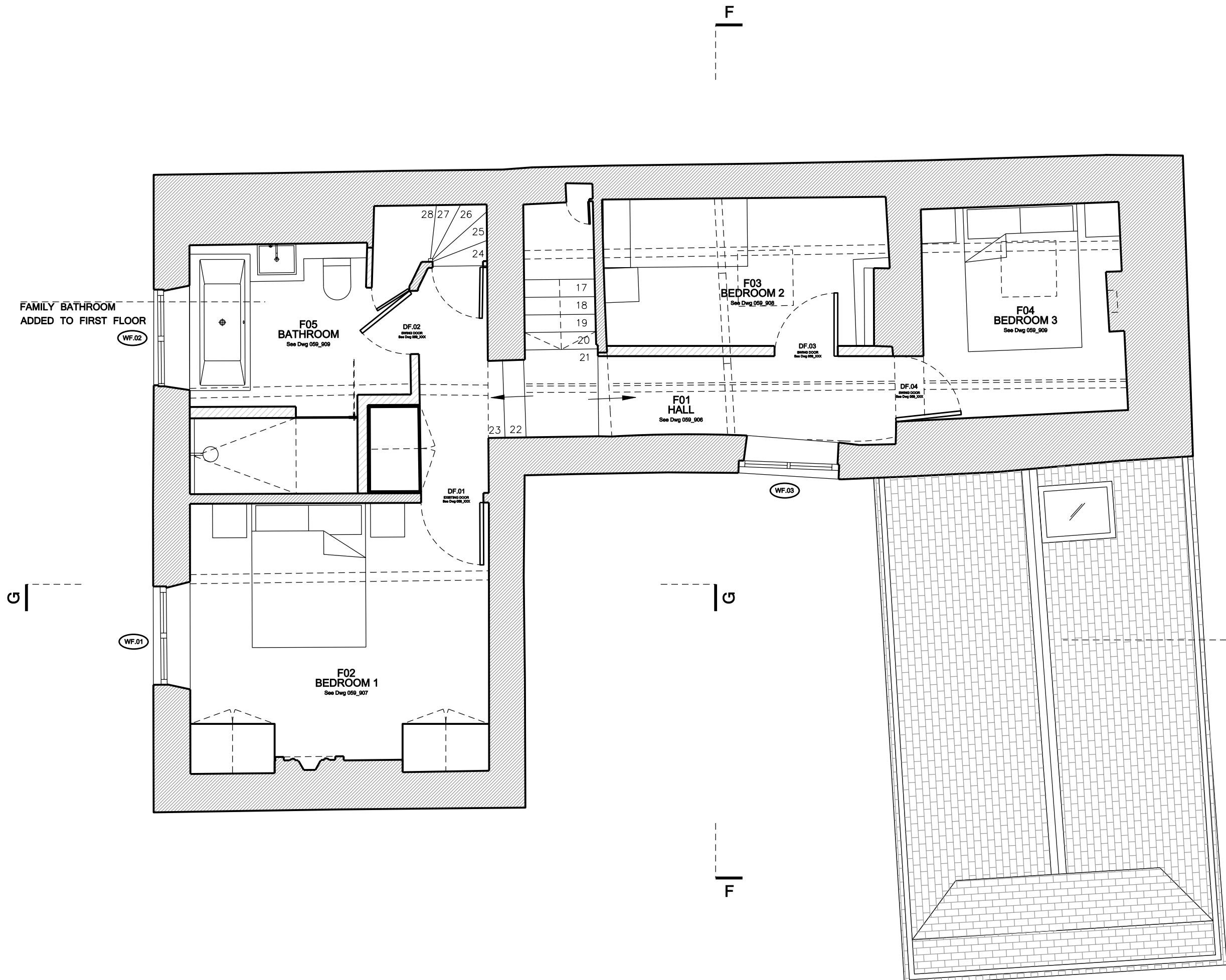


General Note:  
Unless indicated in status, this drawing is for information only. Any discrepancies found between this drawing and other documents should be referred immediately to the consultants. The Contractor to advise on all details and ensure stability and strength of construction. The Contractor to provide setting out drawings for approval prior to construction. The Contractor to check all dimensions on site and relate to these drawings. The Contractor to report any discrepancies to Designers prior to construction. All services to Local Authorities, BCO and Environmental Health regulations and to British Engineer's details. All structure to Structural Engineer's details and Local Authority and BCO regulations. All construction and materials to comply with current Building and Fire Regulations. Drawings should be removed from currency immediately a revised version is issued.

No dimensions to be scaled from this drawing - use figured dimensions only. All dimensions to be checked on site, any discrepancies found between this drawing and other documents should be referred immediately to the consultants. All dimensions in mm.

\* This drawing is Copyright © McLaren Excell Ltd.



FAMILY BATHROOM  
ADDED TO FIRST FLOOR

WF.02

F05  
BATHROOM  
See Dwg 059\_909

DF.02  
SWEEP DOOR  
See Dwg 059\_909

F03  
BEDROOM 2  
See Dwg 059\_908

DF.03  
SWEEP DOOR  
See Dwg 059\_908

F04  
BEDROOM 3  
See Dwg 059\_909

DF.04  
SWEEP DOOR  
See Dwg 059\_909

F01  
HALL  
See Dwg 059\_906

WF.03

F02  
BEDROOM 1  
See Dwg 059\_907

WF.01

NEW KITCHEN  
EXTENSION

Status  
**PLANNING**

Issue	Revision	Comments	Date
PL3			07 07 15
PL2			23 10 14
PL1			05 09 14

Project  
Chancel Cottage, Steeple Aston, OX25

Scale Drawn By Date  
1:50 @ A3 EO 29 05 14

Drawing Title  
Proposed First Floor Plan

Drawing No.  
059\_1\_304 PL3

