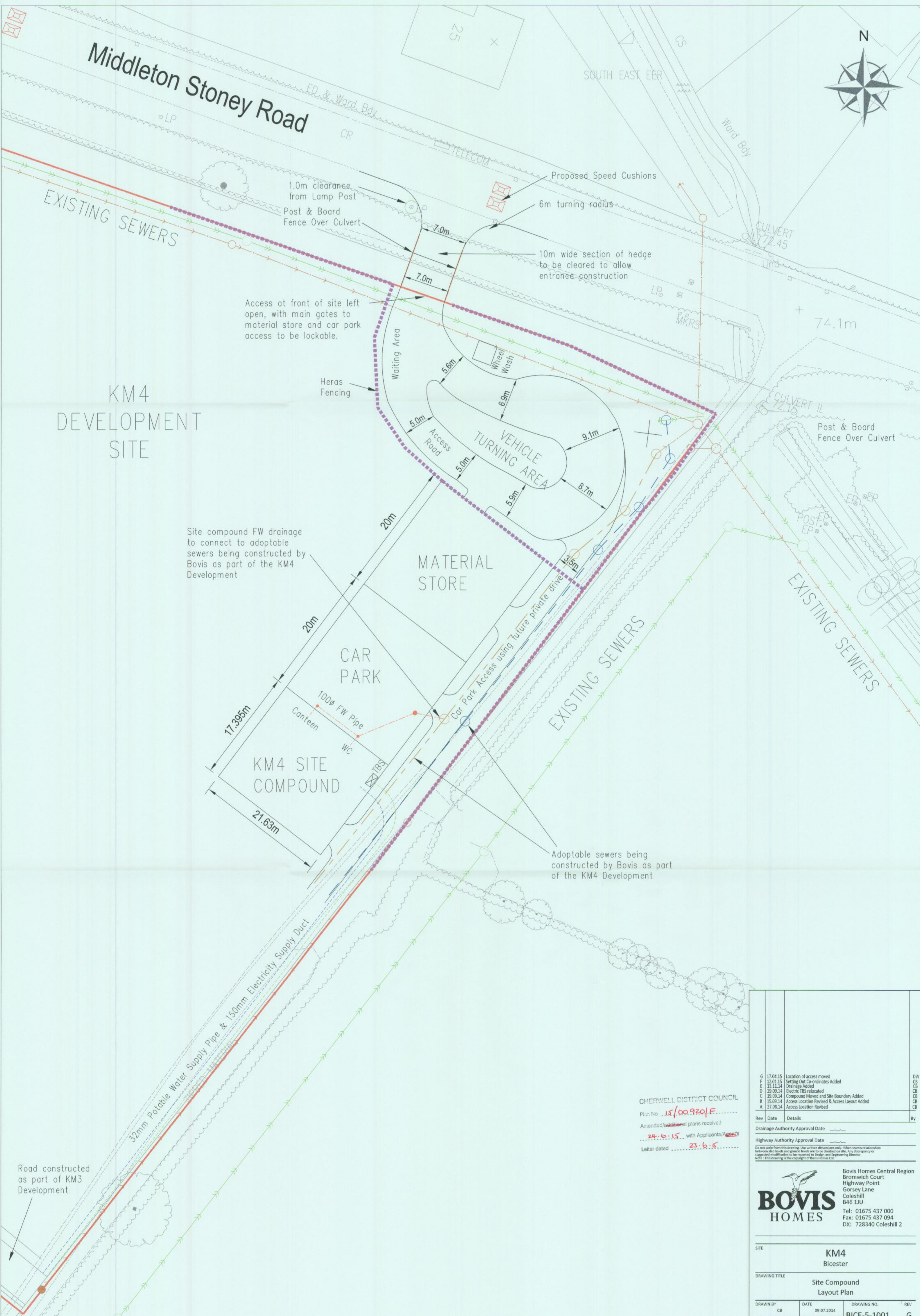


Middleton Stoney Road



KM4
DEVELOPMENT
SITE

Site compound FW drainage to connect to adoptable sewers being constructed by Bovis as part of the KM4 Development

CHERWELL DISTRICT COUNCIL
Plan No. 15/009201.F
Amended/Additional plans received
24.6.15 with Applicants/Agents
Letter dated 23.6.15

Rev	Date	Details	By
G	17.04.15	Location of access moved	DW
F	12.01.15	Setting Out Co-ordinates Added	CB
E	13.11.14	Drainage Added	CB
D	29.09.14	Electric TBS relocated	CB
C	19.09.14	Compound Moved and Site Boundary Added	CB
B	15.09.14	Access Location Revised & Access Layout Added	CB
A	27.08.14	Access Location Revised	CB

Drainage Authority Approval Date _____
Highway Authority Approval Date _____
Do not scale from this drawing. Use written dimensions only. Where shown relationships between slab levels and ground levels are to be checked on site. Any discrepancy or suggested modification is to be referred to Design and Engineering Director.
NOTE: This drawing is the copyright of Bovis Homes Ltd.

BOVIS HOMES
Bovis Homes Central Region
Bronwich Court
Highway Point
Gorsey Lane
Coleshill
B46 1JU
Tel: 01675 437 000
Fax: 01675 437 094
DX: 728340 Coleshill 2

SITE: **KM4 Bicester**
DRAWING TITLE: **Site Compound Layout Plan**

DRAWN BY	DATE	DRAWING NO.	REV
CB	09.07.2014	BICE-5-1001	G

SCALE: 1:250 @ A1
CHECKED/DATE