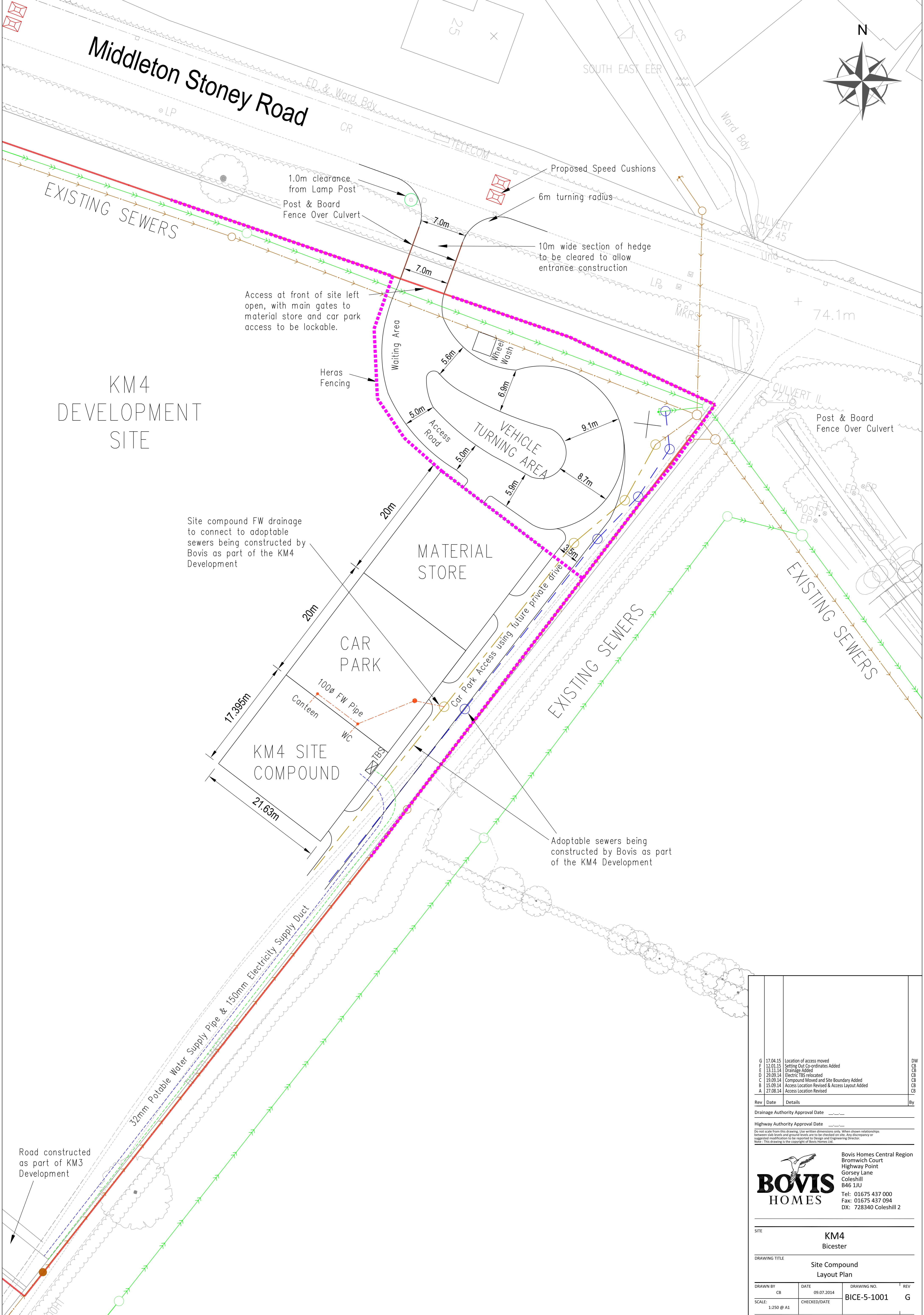
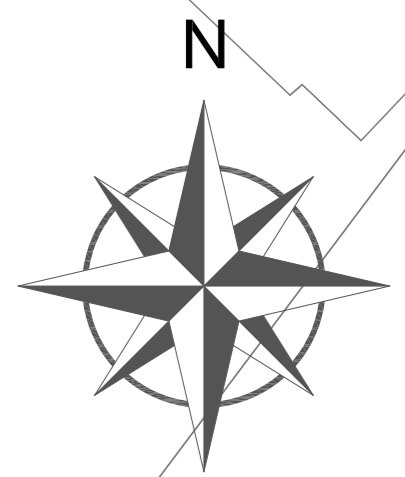


# Middleton Stoney Road



## KM4 DEVELOPMENT SITE

Rev	Date	Details	By
G	17.04.15	Location of access moved	DW
F	12.01.15	Setting Out Co-ordinates Added	CB
E	13.11.14	Drainage Added	CB
D	29.09.14	Electric TBS relocated	CB
C	19.09.14	Compound Moved and Site Boundary Added	CB
B	15.09.14	Access Location Revised & Access Layout Added	CB
A	27.08.14	Access Location Revised	CB

Drainage Authority Approval Date \_\_\_\_\_

Highway Authority Approval Date \_\_\_\_\_

Do not scale from this drawing. Use written dimensions only. When shown relationships between slab levels and ground levels are to be checked on site. Any discrepancy or suggested modification to be reported to Design and Engineering Director. Note: This drawing is the copyright of Bovis Homes Ltd.

**BOVIS HOMES**

Bovis Homes Central Region  
 Bromwich Court  
 Highway Point  
 Gorsey Lane  
 Coleshill  
 B46 1JU  
 Tel: 01675 437 000  
 Fax: 01675 437 094  
 DX: 728340 Coleshill 2

---

SITE: **KM4**  
Bicester

---

DRAWING TITLE: **Site Compound Layout Plan**

---

DRAWN BY	DATE	DRAWING NO.	REV
CB	09.07.2014	BICE-5-1001	G
SCALE:	CHECKED/DATE		
1:250 @ A1			