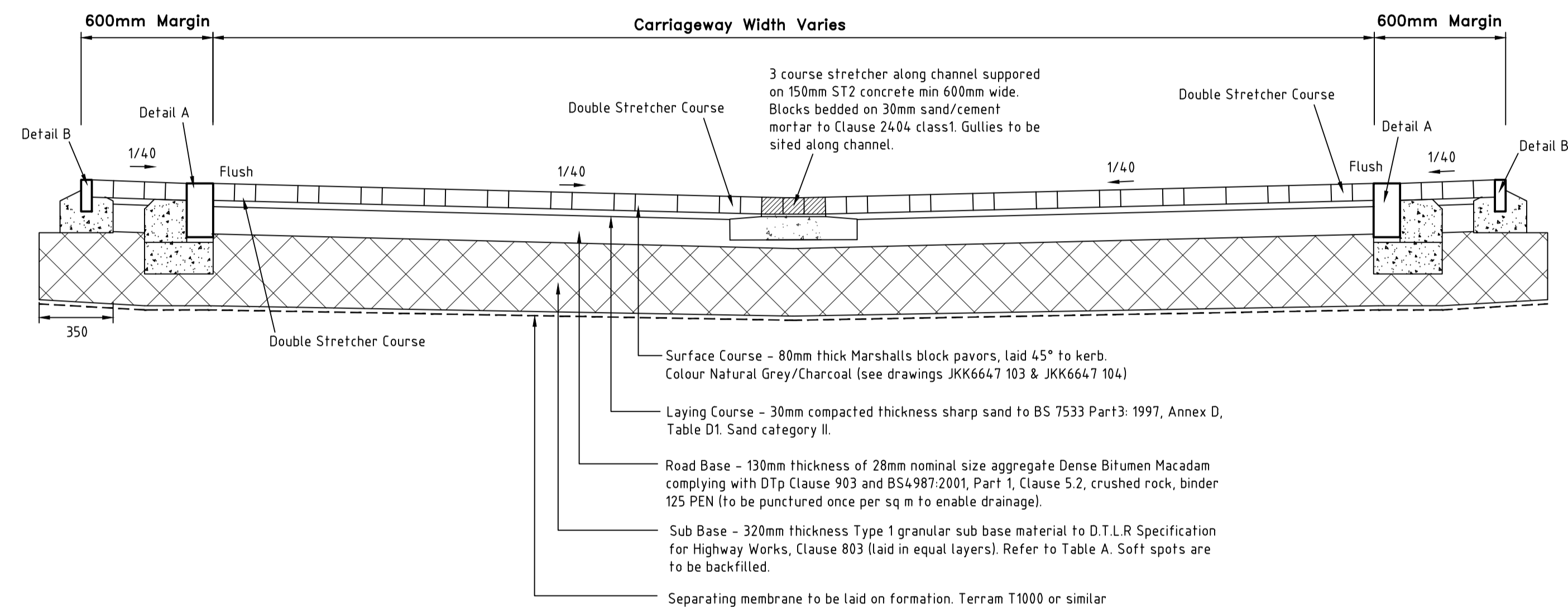


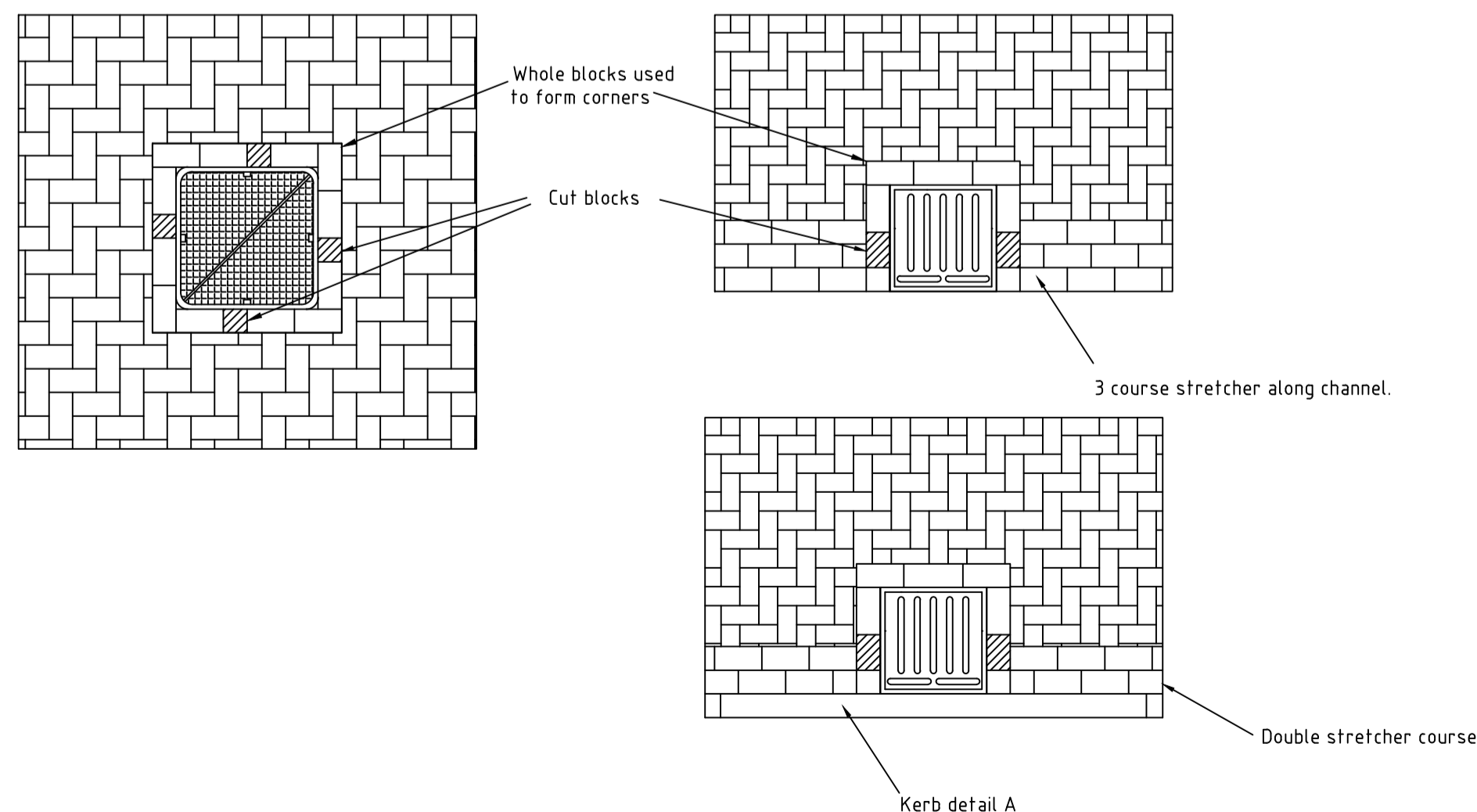
TABLE A CAPPING THICKNESS - In accordance with DMRB7 HD 25/94

CBR	CAPPING	SUB-BASE ONLY	FOR TENDER PURPOSE
< 2.5%	600mm	N/A	
2.5% - 4.9%	400mm	350mm	
5% - 15%	250mm	225mm	
> 15%	0mm	150mm	
NOTES	VARYING CAPPING AND 150mm SUB-BASE	NO CAPPING REQUIRED	
FOR OTHER VALUES OF CBR REFER TO DMRB7 HD25/94 FOR DESIGN THICKNESS.			

BLOCKWORK ROAD CONSTRUCTION – SIDE STREET

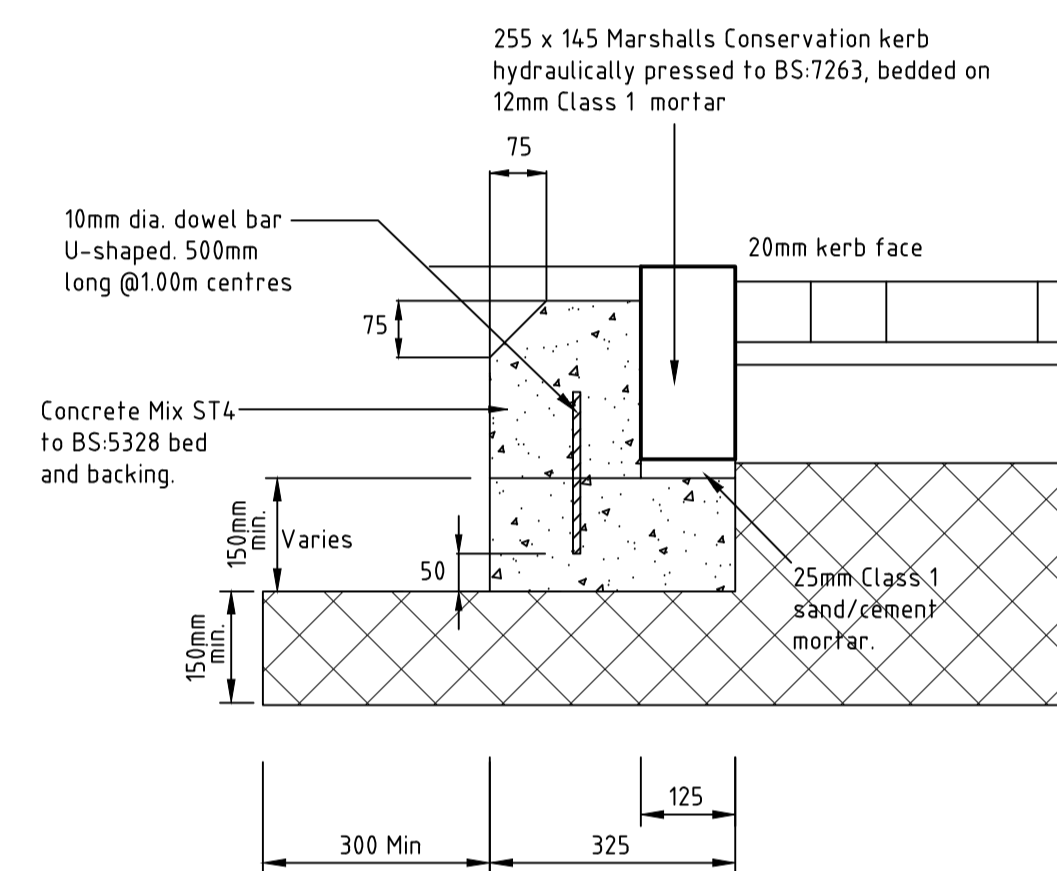


BLOCKWORK ROAD CONSTRUCTION – SHARED SURFACE

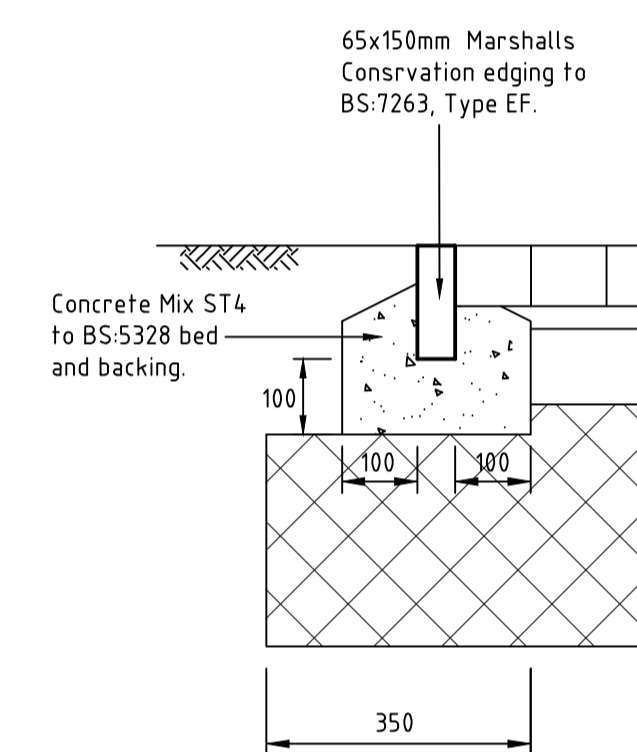


BLOCKWORK DETAILS AROUND CARRIAGEWAY IRONWORK

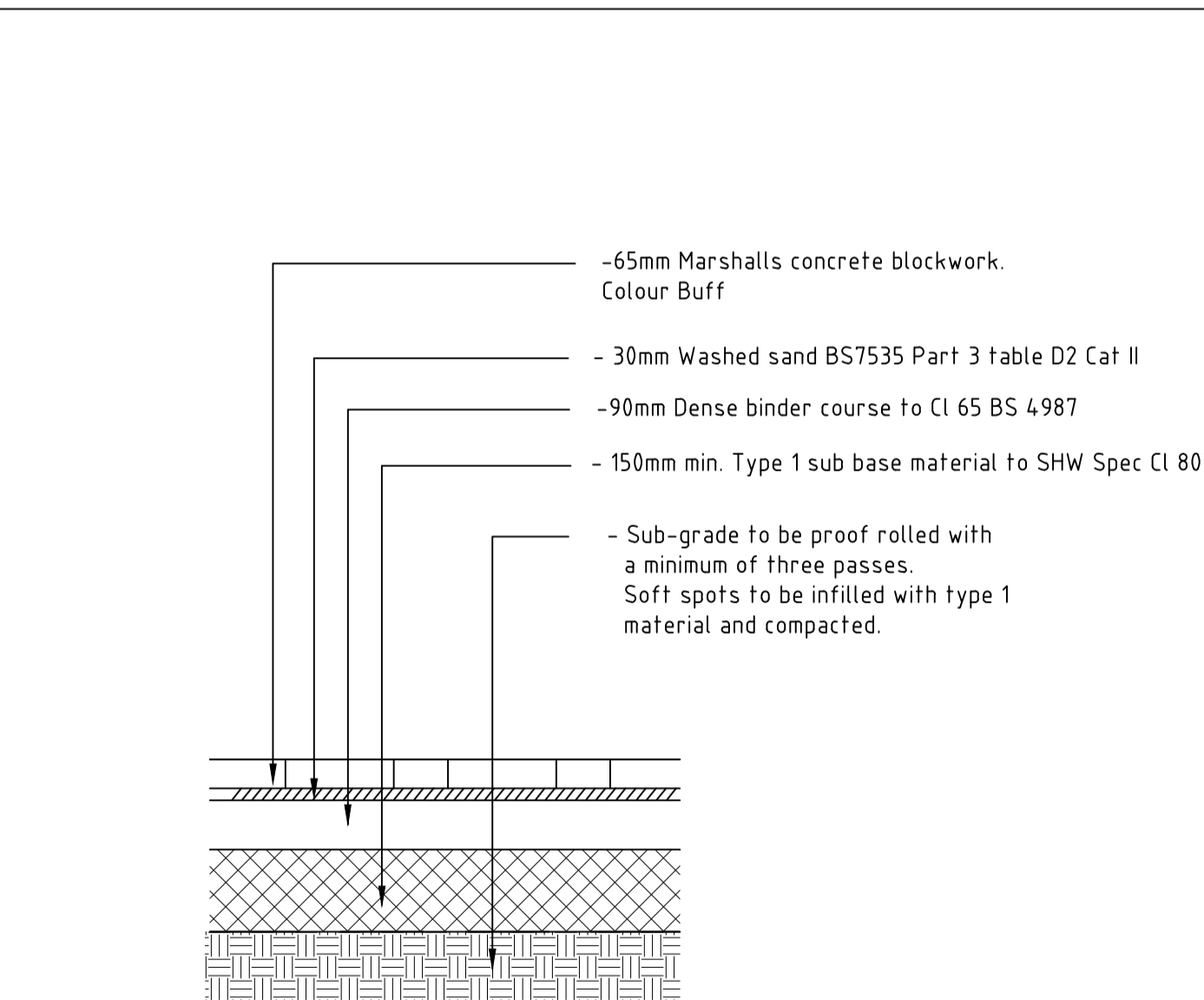
ADOPTABLE DETAILS



DETAIL A

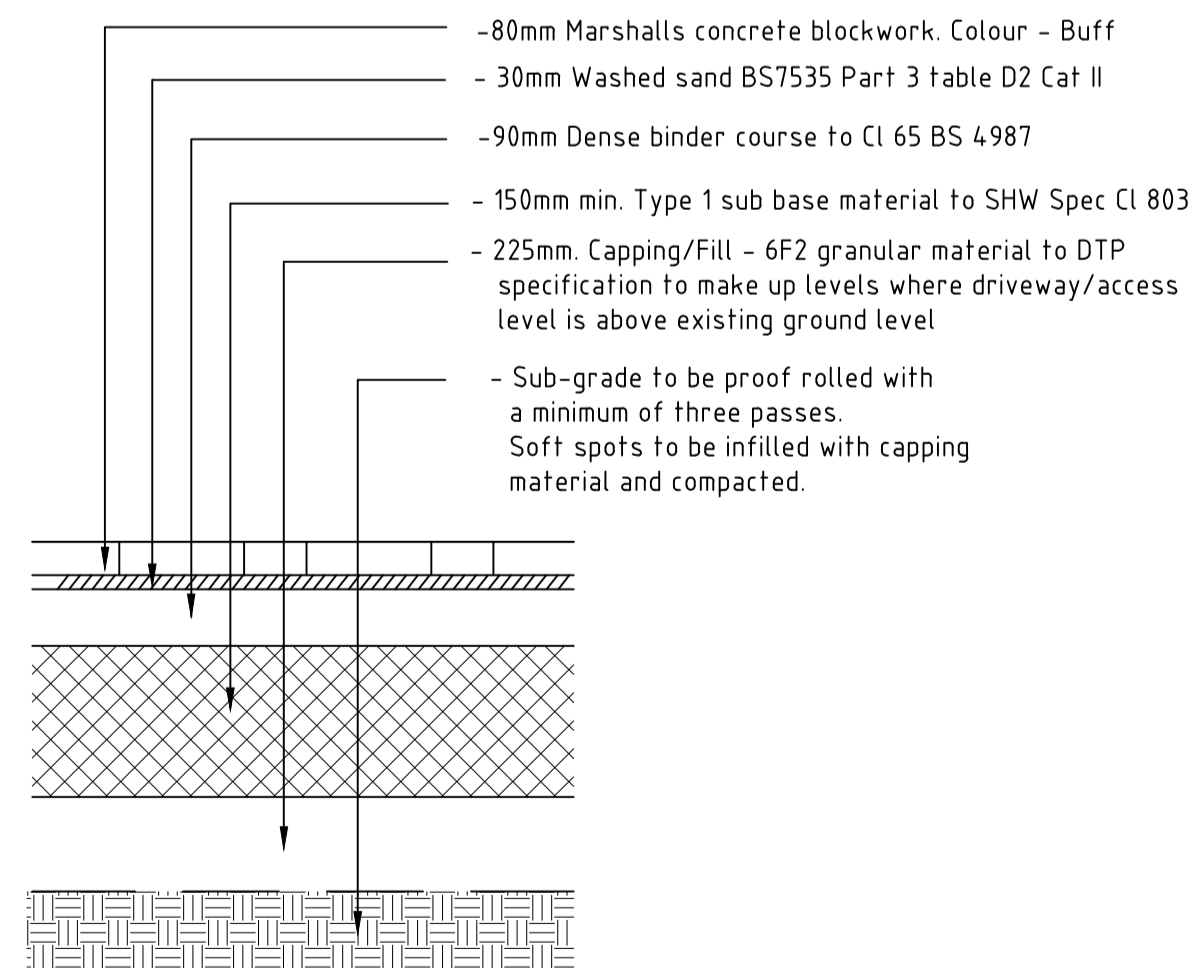


DETAIL B

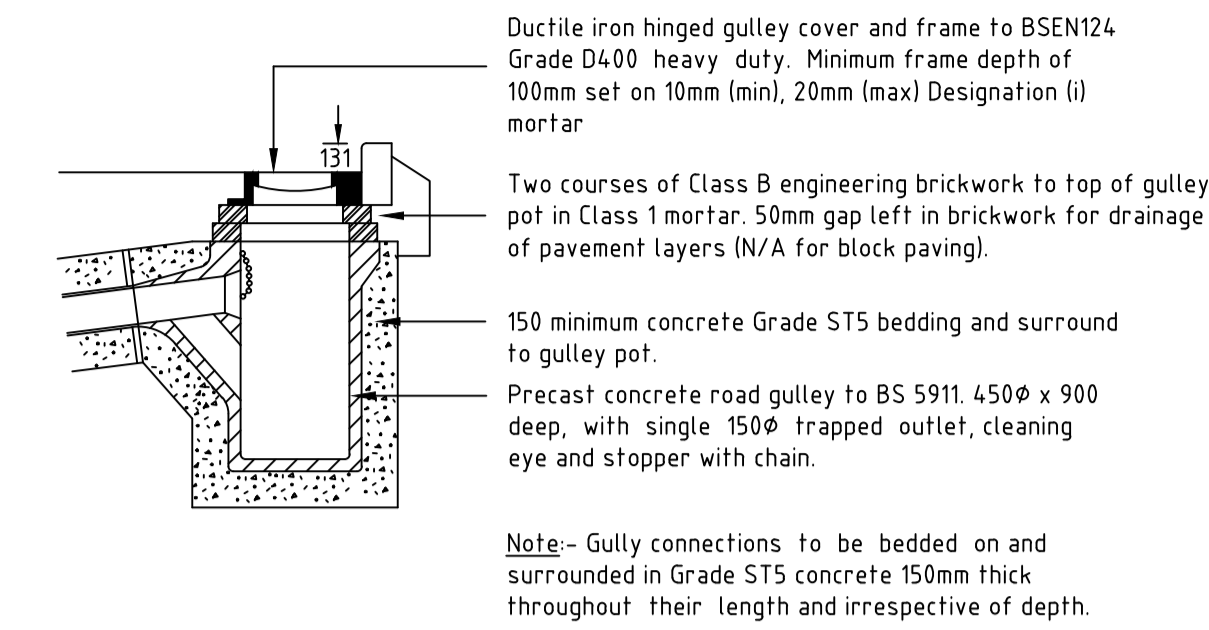


BLOCKWORK PRIVATE PARKING & DRIVES & FOOTPATHS

PRIVATE DETAILS



BLOCKWORK SHARED ACCESS



ROAD GULLY

Note: Gully connections to be bedded on and surrounded in Grade ST5 concrete 150mm thick throughout their length and irrespective of depth.

Notes

- This drawing has been prepared in accordance with the scope of RPS's appointment with its client and is subject to the terms and conditions of that appointment. RPS accepts no liability for any use of this document other than by its client and only for the purposes for which it was prepared and provided.
 - If received electronically it is the recipient's responsibility to print to correct scale. Only written dimensions should be used.
 - This drawing should be read in conjunction with all other relevant drawings and specifications.
- All works shall be in accordance with "Kingsmere Design Code July 2008."
 - Concrete mixes are designed mixes in accordance with the relevant clauses of BS:5328, Parts 2, 3 & 4.
 - References to SHW refer to the Manual of Contract Documents for Highway Works 'Specification of Highway Works' published by the Dtp.
 - Sealing grit to be applied to all bituminous surfaces before use by traffic.

B Geotextile membrane added to road construction. SJW KMc 05.08.13

A FIRST ISSUE TD KMc 15.07.13

Rev	Description	By	Ckd	Date



Noble House
Capital Drive, Linford Wood, Milton Keynes MK14 6QP
T: +44 (0)1908 669898 E: rpsmk@rpsgroup.com F: +44 (0)1908 669899

Client



Project KINGSMERE, BICESTER

Title PAVING CONSTRUCTION DETAILS

Status Preliminary Scale NTS @A1 Date Created 15/07/13
Project Leader KMc Drawn By SJW Checked by KMc

Drawing Number JKK6647 _105 Rev B