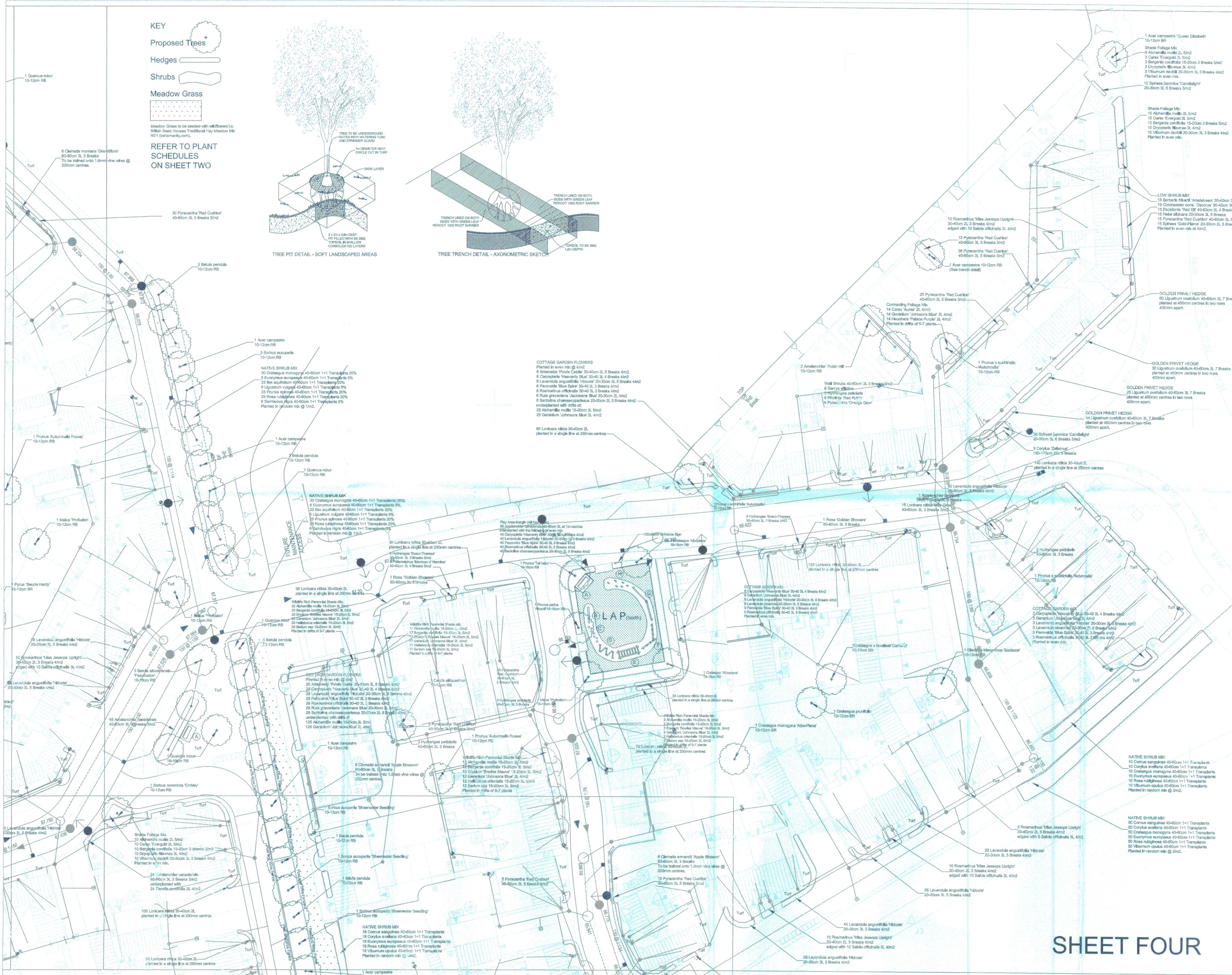
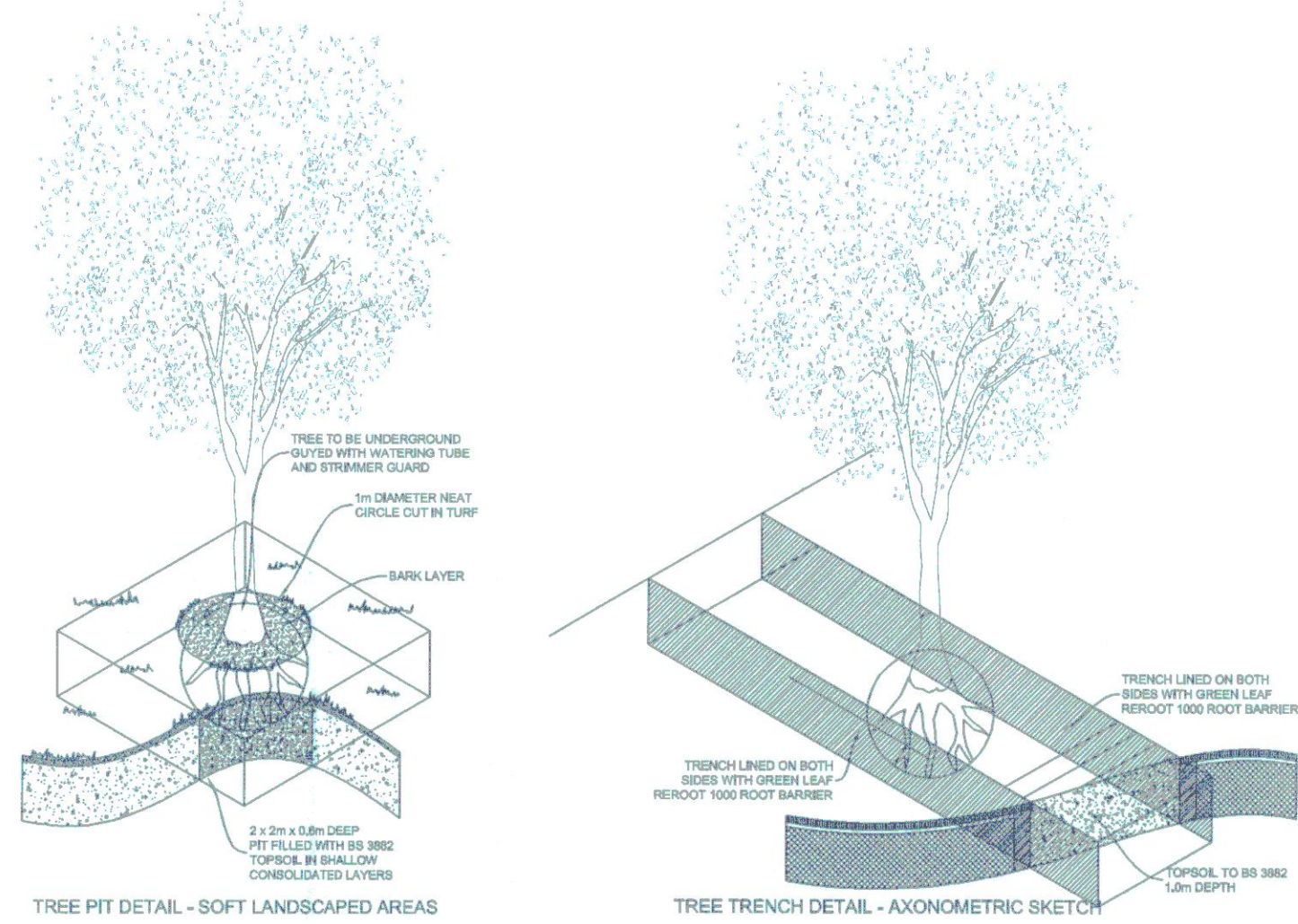


- KEY**
- Proposed Trees
  - Hedges
  - Shrubs
  - Meadow Grass

REFER TO PLANT SCHEDULES ON SHEET TWO

Meadow Grass to be seeded with wildflowers i.e. British Seed Houses Traditional Hay Meadow Mix RE1 (banermy.com).



- SPECIFICATION**
- Plant Material and Workmanship to be in accordance with MCA Landscape Specification and the following British Standards:
- a) All trees, shrubs and hedge plants supplied shall comply with the requirements of British Standard 5831, Specification for Nursery Stock.
  - b) All pre-planting site preparation, planting and post-planting maintenance works shall be carried out in accordance with the requirements of British Standard 4428(1989) Code of Practice for General Landscaping Operations (excluding hard surfaces).
  - c) The use of chemicals (herbicides, insecticides, fungicides and slug pellets etc) is discouraged and all substances used shall be biodegradable and non-toxic.
  - d) Chemical fertilisers are discouraged and well-rotted manure will be used instead.
  - e) Soil conditioners, mulches etc. shall be pastured.
- REVISIONS**
- Rev A 18-01-13**  
Mahaan Cooper Site Layout Plan AR 86234-101 Revision F incorporated and minor amendments made to planting to suit.
- Rev B 28-06-13**  
Mahaan Cooper Site Layout Plan AR 86234-101 Revision L incorporated and amendments made to planting to suit.
- Rev C 08-09-13**  
Drainage layout incorporated and planting adjusted to suit.  
Tree pit details added.
- Rev D 30-09-13**  
Trees around underground water storage tanks moved to edges of apses.
- Rev E 08-10-13**  
LAP furniture and equipment indicated.  
Amendments required by Linda Griffiths/CDC 07-10-13 and add-on:  
1) Native hedge along the eastern school boundary replaced with turf to avoid excessive maintenance along.  
2) Habitat Links  
Meadow grass sowing.  
Species mix of understorey altered to include Hawthorn, Blackthorn and Holly, Guelder Rose and Dogwood defined. (Hawthorn is HIGH WATER DEMAND).  
Trees altered to reflect comments:  
Oak is too large for this area (NRBC Guidelines) but has been indicated where recommended.  
Trees rearranged to create more consistent habitat link.  
Post and Wire Fencing added.  
3) Foyer Lobby boundary hedge deleted as recommended.  
4) Native Box hedge changed to non-native Loraine Hibbs.  
5) Variable access to Foyer Lobby will be prevented.  
6) LAP trees altered as specified.  
7) Trees adjacent plots 9 and 20 altered as recommended.  
8) Prunus across site and adjacent to heavy trees and have not been altered.  
9) Felling of holl is not a nuisance and Mahaan Cooper has been retained.  
10) Field Maple is much too large to plant and to plant 30 and Prunus has been retained.  
11) Tree pit specifications will be described in the landscape specification.
- Rev F: 25-11-13 MC**  
Tim Brown's comments (04/11/13) and MCA add-on:  
LAP opposite plots 63 & 64 -  
Available space modified by deletion of planted bed including Ruta graveolens which can cause skin blisters.  
Oak tree is the focus of this village green and its removal from the scheme is related as this is one of the very few positions that an English native tree of scale can be accommodated.  
LAP is a simple grass area as agreed previously.
- LANDSCAPING**  
South-eastern school boundary hedged with Hornbeam and a grass margin.  
Planting adjacent plot 15 deleted on earlier revision.  
Tree sizes have been amended to include 40-20-30cm girth. Unlike opposite plots 65-70, 16-18cm girth trees to streets, LAP, PCG & Habitat Link.  
Tree pit details indicated.
- LAPS**  
Additional play equipment has been added to the northern and southern LAPS.
- PLANT SCHEDULES**  
The plan is annotated with full details of plant sizes, densities and stock type. Full numeric schedules are on sheet two.  
Jon Brown's comments (20/11/13) and MCA add-on:  
Tree species comprehensively altered in full accordance with Mr Brown's recommendations.  
Habitat Corridors - All altered in full accordance with Mr Brown's recommendations.
- Rev G: 12-05-14 MC**  
Current engineering layout updated and landscape scheme adjusted to suit.  
North and South LAPS updated to LPA requirements.

**CHERWELL DISTRICT COUNCIL**  
Plan No. MCA 1412-04 G  
Amended/Additional plans received  
19-5-14 With Applicants/Agents  
Letter dated 19-5-14

**MCA**  
Chartered Landscape Architects

138 The Moors Kidlington Oxford OX5 2AG  
Tel: (01993) 811888 Fax: (01993) 811508

**PROJECT**  
**BELLWAY HOMES**

**KINGSMERE KM7 - KM9 BICESTER, OXFORDSHIRE**

**DRAWING TITLE**  
**LANDSCAPE DETAILS SHEET FOUR OF FOUR**

Scale Date Drawn  
1:250 09-12-12 MC

Drawing No.  
MCA1412-04 G

DO NOT SCALE COPYRIGHT RESERVED

**SHEET FOUR**