

If there should be any doubt or query regarding the interpretation of the information given on this Drawing, please enquire directly to Rolton Group Ltd before executing such part of the works.

The contents of this drawing are strictly confidential and must not in any circumstances be copied, shown, published or otherwise disclosed to anyone, outside the Rolton Group without express consent in writing.

NOTES

1. This drawing is to be read in conjunction with all the relevant contract documentation.
2. All dimensions are in mm unless otherwise stated.
3. All services are new unless otherwise stated.
4. Architectural lighting is not included in this layout



Type A - Philips SpeedStar LED



Type B - Philips VivaraVON



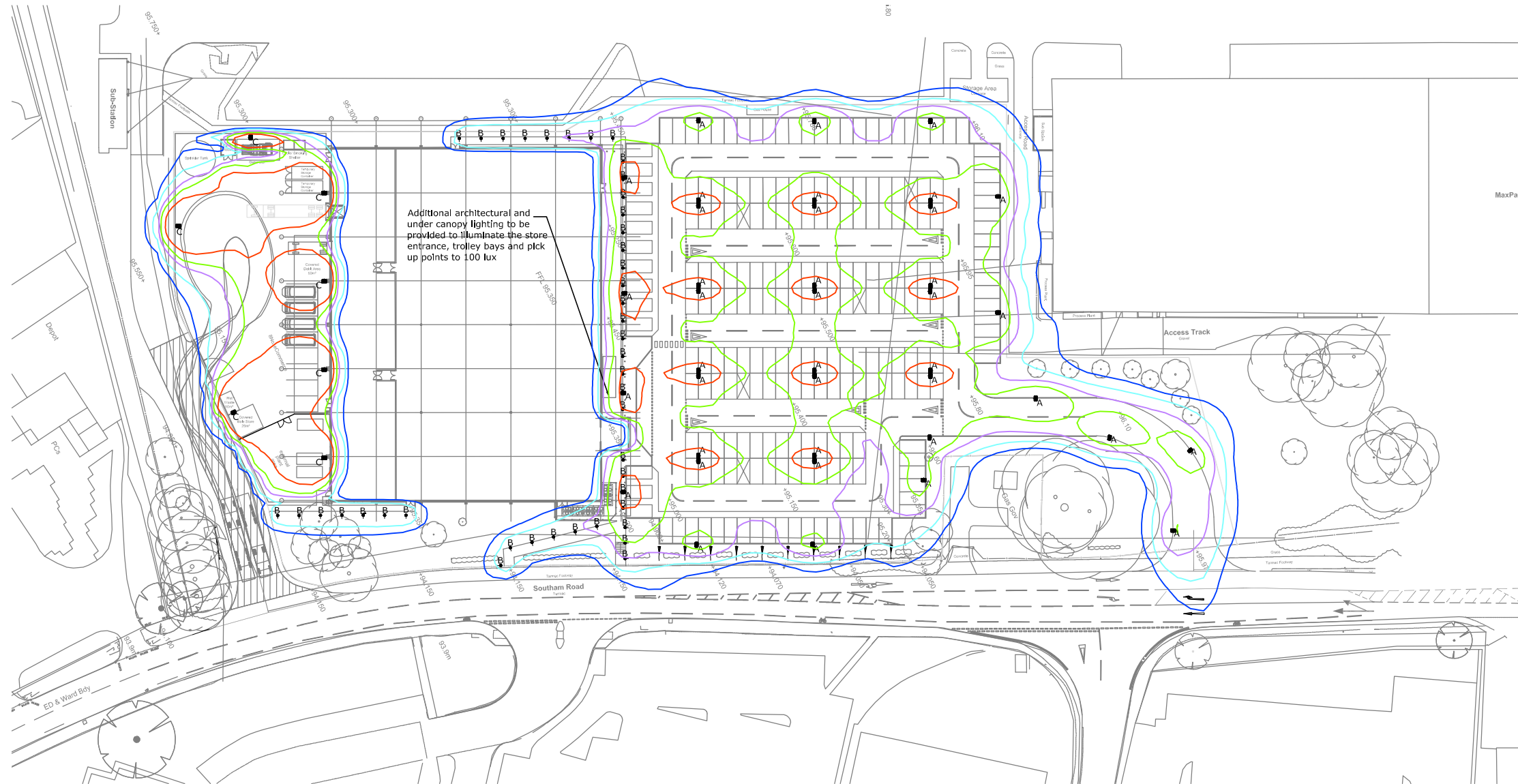
Type C - Philips OptiFlood

LEGEND

- A PHILIPS BGP322 T35 1xGRN88-2S/740 DM (8774 lm)
Pole top LED luminaire mounted at 8m
- B PHILIPS HCP170 1xSON-I-70W-CO LO PCP (2128 lm)
High pressure sodium 1m bollard
- C PHILIPS MVP506 WG 1xSON-TPP250W A60 (33200 lm)
High pressure sodium floodlight mounted at 6m with 10° tilt

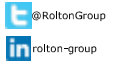
ISOLINES

- 5.0 lx
- 10.0 lx
- 20.0 lx
- 30.0 lx
- 50.0 lx



ROLTON GROUP
ENGINEERING THE FUTURE

Telephone +44 (0)870 726 0000
www.rolton.com



- THE CHARLES PARKER BUILDING
MIDLAND ROAD, HIGHAM FERRERS
NORTHANTS NN10 8DN
- ONE MINERVA BUSINESS PARK
LYNCH WOOD
PETERBOROUGH PE2 6FT
- THE DAVID ROLTON BUILDING
TWELVE QUARTZ POINT
STONEBRIDGE ROAD
BIRMINGHAM B46 3JL

This Design is a Performance Specification and indicative drawings. The Detailed design is to be completed by the Contractor.

Rev.	Date	Description of Issue	Chkd
Revisions			

Issue Purpose:

Information

Project
Waitrose
Banbury

Drawing Title:
Indicative External
Lighting Layout

Designer's Risk Assessment Reference:

Specification Reference:

Drawn By: JH
Checked By: CME

Scales: 1:500@A1
1:1000@A3
Date: Mar '15

Drawing No. Rev.