

PREPARATION NOTES: REFER ALSO TO THE MEASURED WORKS SCHEDULE.

- 1. Planting shall be set out exactly as shown on the drawings and measured ground levels...
2. All planting beds shall be set out exactly as shown on the drawings and measured ground levels...
3. All planting beds shall be set out exactly as shown on the drawings and measured ground levels...

- 4. Proposed large featured or standard trees shall be set out as specified on the drawings...
5. Turf to be of cultivated grade such as 'Lawson's Hybrid' or 'Sutton's Wonder'...
6. Self-clinging climbing shrubs or wall shrubs with 20' growth after the planting date...

- 7. Twining varieties of climber with 20' growth after the planting date...
8. All shrubs, herbaceous plants, white and translucent shall be watered in on planting with 20 litres per square metre...
9. All shrubs, herbaceous plants, white and translucent shall be watered in on planting with 20 litres per square metre...

- 10. Proposed large featured or standard trees shall be set out as specified on the drawings...
11. Turf to be of cultivated grade such as 'Lawson's Hybrid' or 'Sutton's Wonder'...
12. Self-clinging climbing shrubs or wall shrubs with 20' growth after the planting date...

- 13. Twining varieties of climber with 20' growth after the planting date...
14. All shrubs, herbaceous plants, white and translucent shall be watered in on planting with 20 litres per square metre...
15. All shrubs, herbaceous plants, white and translucent shall be watered in on planting with 20 litres per square metre...

- 16. Proposed large featured or standard trees shall be set out as specified on the drawings...
17. Turf to be of cultivated grade such as 'Lawson's Hybrid' or 'Sutton's Wonder'...
18. Self-clinging climbing shrubs or wall shrubs with 20' growth after the planting date...

- 19. Twining varieties of climber with 20' growth after the planting date...
20. All shrubs, herbaceous plants, white and translucent shall be watered in on planting with 20 litres per square metre...
21. All shrubs, herbaceous plants, white and translucent shall be watered in on planting with 20 litres per square metre...

- 22. Proposed large featured or standard trees shall be set out as specified on the drawings...
23. Turf to be of cultivated grade such as 'Lawson's Hybrid' or 'Sutton's Wonder'...
24. Self-clinging climbing shrubs or wall shrubs with 20' growth after the planting date...

- 25. Twining varieties of climber with 20' growth after the planting date...
26. All shrubs, herbaceous plants, white and translucent shall be watered in on planting with 20 litres per square metre...
27. All shrubs, herbaceous plants, white and translucent shall be watered in on planting with 20 litres per square metre...

- 28. Proposed large featured or standard trees shall be set out as specified on the drawings...
29. Turf to be of cultivated grade such as 'Lawson's Hybrid' or 'Sutton's Wonder'...
30. Self-clinging climbing shrubs or wall shrubs with 20' growth after the planting date...

SPECIFICATION FOR "COVERTEX" SHEET MULCH FOR GRAVEL AREAS

INTRODUCTION
"COVERTEX" is a woven black polypropylene fabric, 102g/m2 which is manufactured in ultraviolet resistant (black) form. This product is available from Hy-Tek UK Ltd., PO Box 97, Adlington, Ashton, Lancs, M25 7JX. Telephone: 01253 720097.

- 1. Prepare ground to ensure it is even and firm. For any planted or seeded patches and areas the soil shall be fertilised and evenly cultivated until friable.
2. Ensure that the finished soil level is firm, for any planted or seeded patches and areas the soil shall be fertilised and evenly cultivated until friable.



- 3. Once all the plants are planted, cover the fabric all over with 40mm of clean, washed, cream/buff coloured gravel, 20mm gaps.
4. Once all the plants are planted, cover the fabric all over with 40mm of clean, washed, cream/buff coloured gravel, 20mm gaps.

- 5. Finally, water the plants thoroughly ensuring that each plant receives 2 gallons of water if the soil is dry or in warm weather conditions.
6. Once all the plants are planted, cover the fabric all over with 40mm of clean, washed, cream/buff coloured gravel, 20mm gaps.

- 7. Finally, water the plants thoroughly ensuring that each plant receives 2 gallons of water if the soil is dry or in warm weather conditions.
8. Once all the plants are planted, cover the fabric all over with 40mm of clean, washed, cream/buff coloured gravel, 20mm gaps.

- 9. Finally, water the plants thoroughly ensuring that each plant receives 2 gallons of water if the soil is dry or in warm weather conditions.
10. Once all the plants are planted, cover the fabric all over with 40mm of clean, washed, cream/buff coloured gravel, 20mm gaps.

- 11. Finally, water the plants thoroughly ensuring that each plant receives 2 gallons of water if the soil is dry or in warm weather conditions.
12. Once all the plants are planted, cover the fabric all over with 40mm of clean, washed, cream/buff coloured gravel, 20mm gaps.

- 13. Finally, water the plants thoroughly ensuring that each plant receives 2 gallons of water if the soil is dry or in warm weather conditions.
14. Once all the plants are planted, cover the fabric all over with 40mm of clean, washed, cream/buff coloured gravel, 20mm gaps.

- 15. Finally, water the plants thoroughly ensuring that each plant receives 2 gallons of water if the soil is dry or in warm weather conditions.
16. Once all the plants are planted, cover the fabric all over with 40mm of clean, washed, cream/buff coloured gravel, 20mm gaps.

HEALTH AND SAFETY RISK ASSESSMENT

This Risk Assessment has 2 purposes:
1. To identify any significant hazards related to design work by Jane Blake Associates.
2. To identify any significant hazards related to design work by Jane Blake Associates.

Table with 3 columns: RISK LEVEL, HAZARD/RISK, and MEASURES TO AVOID OR REDUCE THE RISK. Rows include 'HAZARD TO SAFETY OF WORKERS', 'HAZARD TO SAFETY OF PEDESTRIANS', and 'HAZARD TO SAFETY OF OPERATIVES'.

HAZARD/RISK: HAZARD TO SAFETY OF WORKERS, USERS OF ADJACENT LAND AND FOOTWAY USERS OF THE SITE BY PARKED VEHICLES.
MEASURES TO AVOID OR REDUCE THE RISK: 1. COULD BECOME A POSSIBLE SLIP HAZARD TO PEDESTRIANS.

HAZARD/RISK: HAZARD TO SAFETY OF OPERATIVES, GENERAL PUBLIC AND THEIR PETS.
MEASURES TO AVOID OR REDUCE THE RISK: 1. COULD BECOME A POSSIBLE SLIP HAZARD TO PEDESTRIANS.

HAZARD/RISK: HAZARD TO SAFETY OF PLAY AREA USERS.
MEASURES TO AVOID OR REDUCE THE RISK: 1. COULD BECOME A POSSIBLE SLIP HAZARD TO PEDESTRIANS.

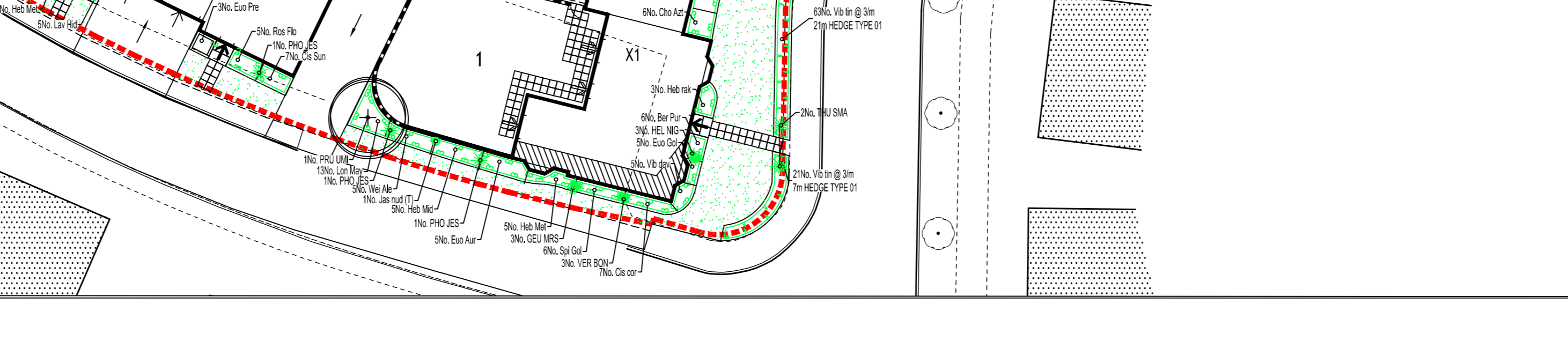
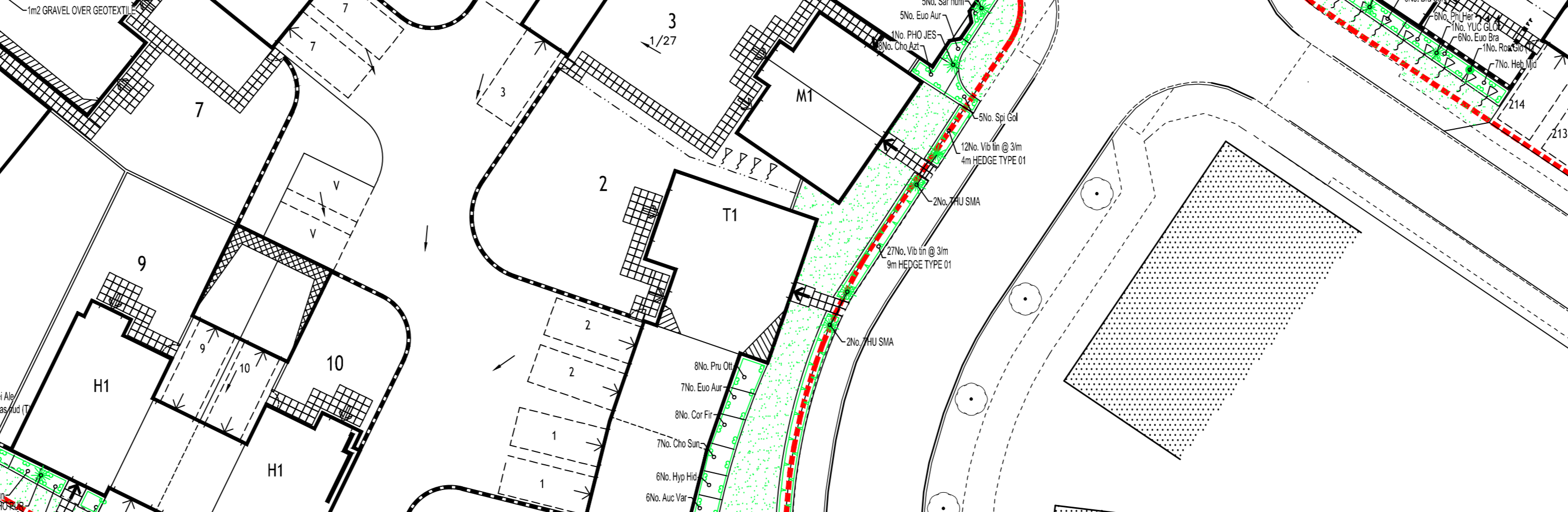
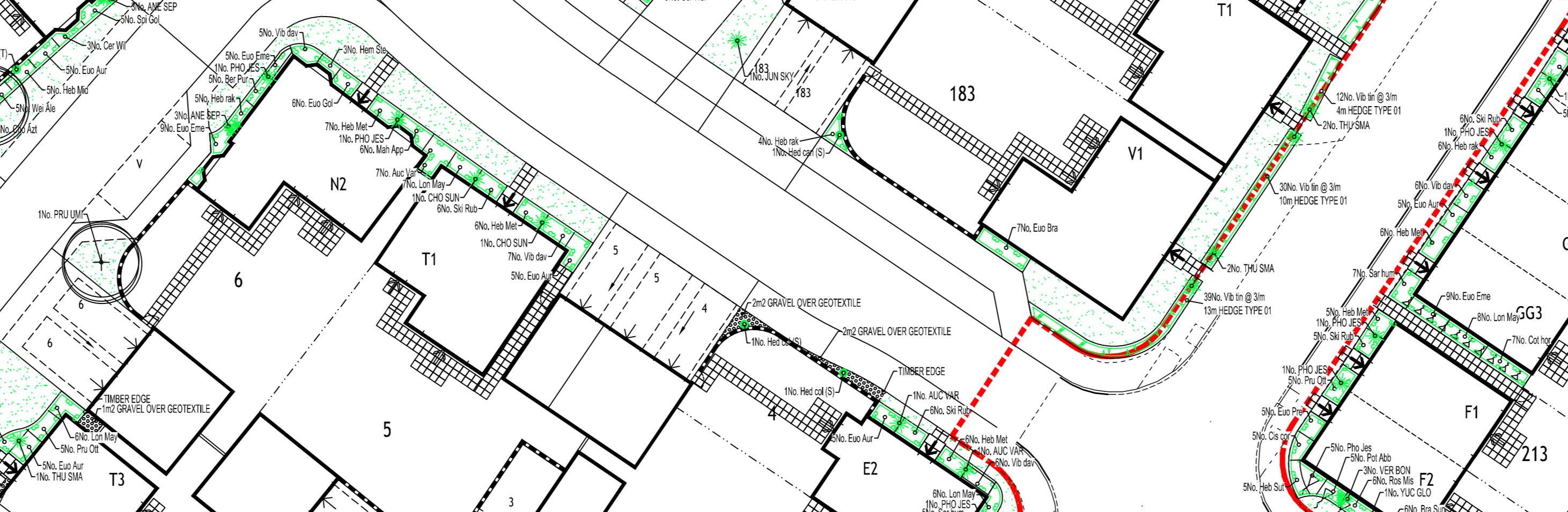
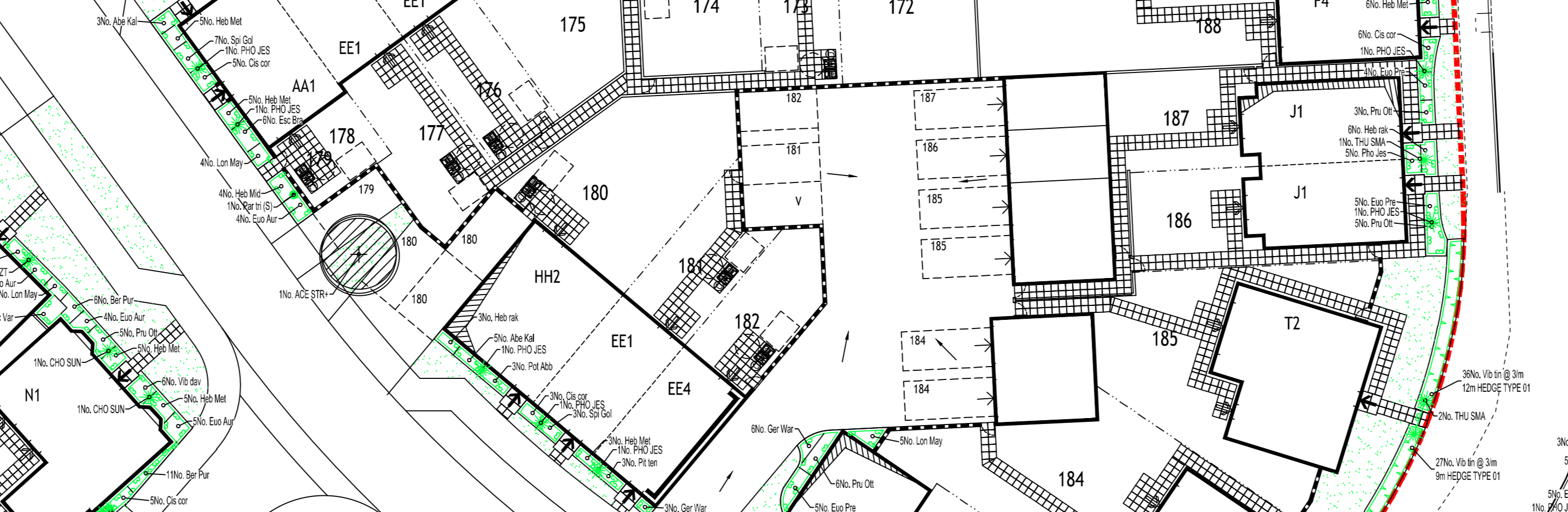
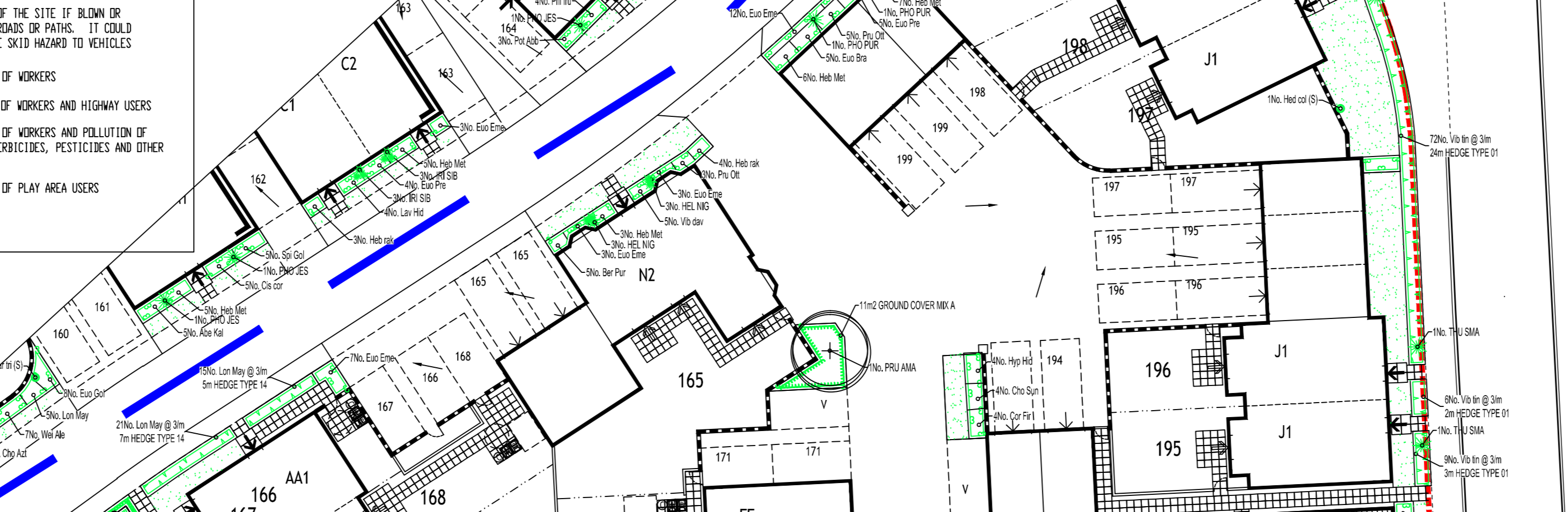
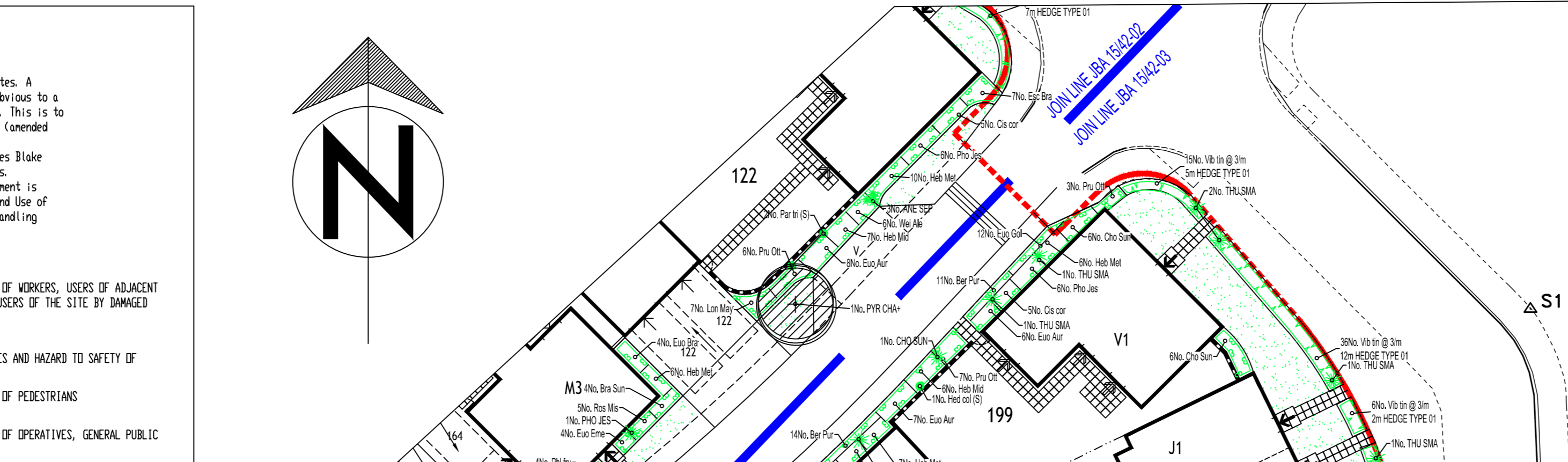
HAZARD/RISK: HAZARD TO SAFETY OF PLAY AREA USERS.
MEASURES TO AVOID OR REDUCE THE RISK: 1. COULD BECOME A POSSIBLE SLIP HAZARD TO PEDESTRIANS.

HAZARD/RISK: HAZARD TO SAFETY OF PLAY AREA USERS.
MEASURES TO AVOID OR REDUCE THE RISK: 1. COULD BECOME A POSSIBLE SLIP HAZARD TO PEDESTRIANS.

HAZARD/RISK: HAZARD TO SAFETY OF PLAY AREA USERS.
MEASURES TO AVOID OR REDUCE THE RISK: 1. COULD BECOME A POSSIBLE SLIP HAZARD TO PEDESTRIANS.

HAZARD/RISK: HAZARD TO SAFETY OF PLAY AREA USERS.
MEASURES TO AVOID OR REDUCE THE RISK: 1. COULD BECOME A POSSIBLE SLIP HAZARD TO PEDESTRIANS.

HAZARD/RISK: HAZARD TO SAFETY OF PLAY AREA USERS.
MEASURES TO AVOID OR REDUCE THE RISK: 1. COULD BECOME A POSSIBLE SLIP HAZARD TO PEDESTRIANS.



SCHEDULE OF PLANTS

Table with columns: CODE, PLANT NAME, STOCK, SPACING, SITE, DBP, MAX HT, WIND. Lists various plant species and their specifications.

Table with columns: CODE, PLANT NAME, STOCK, SPACING, SITE, DBP, MAX HT, WIND. Lists various plant species and their specifications.

Table with columns: CODE, PLANT NAME, STOCK, SPACING, SITE, DBP, MAX HT, WIND. Lists various plant species and their specifications.

Table with columns: CODE, PLANT NAME, STOCK, SPACING, SITE, DBP, MAX HT, WIND. Lists various plant species and their specifications.

Table with columns: CODE, PLANT NAME, STOCK, SPACING, SITE, DBP, MAX HT, WIND. Lists various plant species and their specifications.

Table with columns: CODE, PLANT NAME, STOCK, SPACING, SITE, DBP, MAX HT, WIND. Lists various plant species and their specifications.

Table with columns: CODE, PLANT NAME, STOCK, SPACING, SITE, DBP, MAX HT, WIND. Lists various plant species and their specifications.

SCHEDULE OF PLANTS

Table with columns: CODE, PLANT NAME, STOCK, SPACING, SITE, DBP, MAX HT, WIND. Lists various plant species and their specifications.

Table with columns: CODE, PLANT NAME, STOCK, SPACING, SITE, DBP, MAX HT, WIND. Lists various plant species and their specifications.

Table with columns: CODE, PLANT NAME, STOCK, SPACING, SITE, DBP, MAX HT, WIND. Lists various plant species and their specifications.

Table with columns: CODE, PLANT NAME, STOCK, SPACING, SITE, DBP, MAX HT, WIND. Lists various plant species and their specifications.

Table with columns: CODE, PLANT NAME, STOCK, SPACING, SITE, DBP, MAX HT, WIND. Lists various plant species and their specifications.

Table with columns: CODE, PLANT NAME, STOCK, SPACING, SITE, DBP, MAX HT, WIND. Lists various plant species and their specifications.

Table with columns: CODE, PLANT NAME, STOCK, SPACING, SITE, DBP, MAX HT, WIND. Lists various plant species and their specifications.

KEY

- PROPOSED STANDARD TREE, INCLUDING DOUBLE STAKE AND TIE. SEE SPECIFICATION NOTES A1, B3, B5, C1, C1-D, C1-D-2 AND E1.
PROPOSED EXTRA HEAVY STANDARD TREE, INCLUDING DOUBLE STAKE AND TIE. SEE SPECIFICATION NOTES A1, B3, B5, C1, C1-D, C1-D-2 AND E1.

- PROPOSED EXTRA HEAVY STANDARD TREE, INCLUDING DOUBLE STAKE AND TIE. SEE SPECIFICATION NOTES A1, B3, B5, C1, C1-D, C1-D-2 AND E1.
PROPOSED EXTRA HEAVY STANDARD TREE, INCLUDING DOUBLE STAKE AND TIE. SEE SPECIFICATION NOTES A1, B3, B5, C1, C1-D, C1-D-2 AND E1.

- PROPOSED EXTRA HEAVY STANDARD TREE, INCLUDING DOUBLE STAKE AND TIE. SEE SPECIFICATION NOTES A1, B3, B5, C1, C1-D, C1-D-2 AND E1.
PROPOSED EXTRA HEAVY STANDARD TREE, INCLUDING DOUBLE STAKE AND TIE. SEE SPECIFICATION NOTES A1, B3, B5, C1, C1-D, C1-D-2 AND E1.

- PROPOSED EXTRA HEAVY STANDARD TREE, INCLUDING DOUBLE STAKE AND TIE. SEE SPECIFICATION NOTES A1, B3, B5, C1, C1-D, C1-D-2 AND E1.
PROPOSED EXTRA HEAVY STANDARD TREE, INCLUDING DOUBLE STAKE AND TIE. SEE SPECIFICATION NOTES A1, B3, B5, C1, C1-D, C1-D-2 AND E1.

- PROPOSED EXTRA HEAVY STANDARD TREE, INCLUDING DOUBLE STAKE AND TIE. SEE SPECIFICATION NOTES A1, B3, B5, C1, C1-D, C1-D-2 AND E1.
PROPOSED EXTRA HEAVY STANDARD TREE, INCLUDING DOUBLE STAKE AND TIE. SEE SPECIFICATION NOTES A1, B3, B5, C1, C1-D, C1-D-2 AND E1.

- PROPOSED EXTRA HEAVY STANDARD TREE, INCLUDING DOUBLE STAKE AND TIE. SEE SPECIFICATION NOTES A1, B3, B5, C1, C1-D, C1-D-2 AND E1.
PROPOSED EXTRA HEAVY STANDARD TREE, INCLUDING DOUBLE STAKE AND TIE. SEE SPECIFICATION NOTES A1, B3, B5, C1, C1-D, C1-D-2 AND E1.

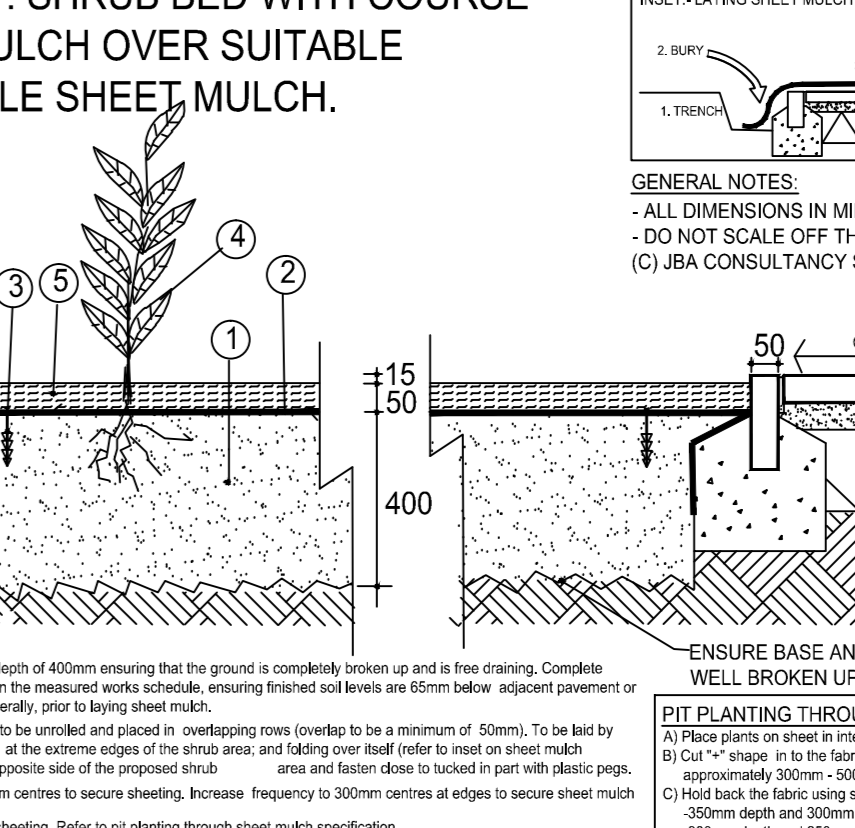
- PROPOSED EXTRA HEAVY STANDARD TREE, INCLUDING DOUBLE STAKE AND TIE. SEE SPECIFICATION NOTES A1, B3, B5, C1, C1-D, C1-D-2 AND E1.
PROPOSED EXTRA HEAVY STANDARD TREE, INCLUDING DOUBLE STAKE AND TIE. SEE SPECIFICATION NOTES A1, B3, B5, C1, C1-D, C1-D-2 AND E1.

SPECIFICATION FOR HEDGE PLANTING

SPECIFICATION FOR ORNAMENTAL HEDGE PLANTING - LARGE GROWING SPECIES
Hedges containing large ornamental species shall be planted in a single straight row at a density of 3 plants per linear metre. The row shall be placed in the centre of the bed. Hedge plants to be 3L container grown stock, 400-600mm height and spread unless otherwise stated.

SPECIFICATION FOR ORNAMENTAL HEDGE PLANTING - MEDIUM GROWING SPECIES
Hedges containing medium ornamental species shall be planted in a single straight row at a density of 3 plants per linear metre. The row shall be placed in the centre of the bed. Hedge plants to be 3L container grown stock, 300-400mm height and spread unless otherwise stated.

INSET DETAIL 1: SHRUB BED WITH COURSE BIODEGRADABLE SHEET MULCH



NOTES
1. All dimensions in millimetres.
2. All dimensions in millimetres.
3. All dimensions in millimetres.

OUTLINE LAYOUT PROPOSALS

This drawing is for comment only and is not to be used for tender or construction. Planting to be detailed upon request.
DUE TO NATIONAL PLANT SHORTAGE, PLANTS MAY TAKE UP TO 4 WEEKS TO BE DELIVERED. EARLY LEAD-IN FOR SOFT LANDSCAPE IS ESSENTIAL.

Table with columns: CLIENT, PROJECT, DATE, and other project details.

Vertical sidebar containing project information, client details, and the JB CONSULTANTS logo.