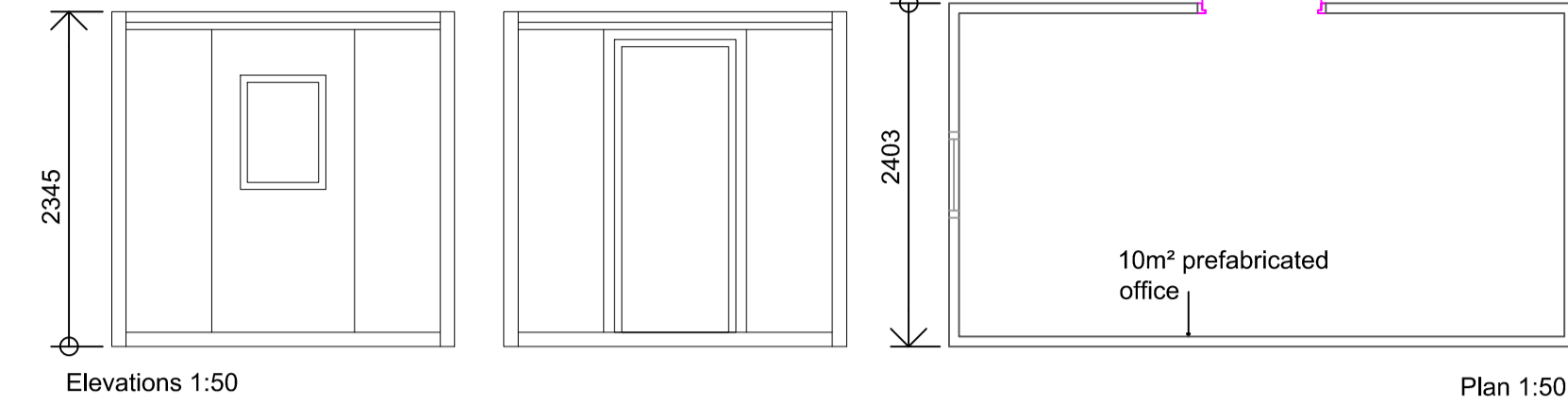


PORTACABIN SPECIFICATION NOTES

For office portacabin to be located internally, along the back wall of the barn (as shown in 1:100 plan below)



Available from: Expandakabin or equal and equivalent

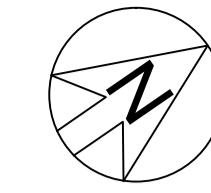
Finishes:
Internal - White RAL9002
External - Green RAL6005

Length: 4.3m
Width: 2.3m
Height: 2.3m
Weight: 1100kg

No electrical wiring and equipment fitted. The unit is designed to have a surface mounted electrical installation. Optional electrical pack available.

Please note: Expandakabin is not designed to comply with Building Regulations approval.

Doors and windows can be fitted anywhere in the units.



Legend/Notes

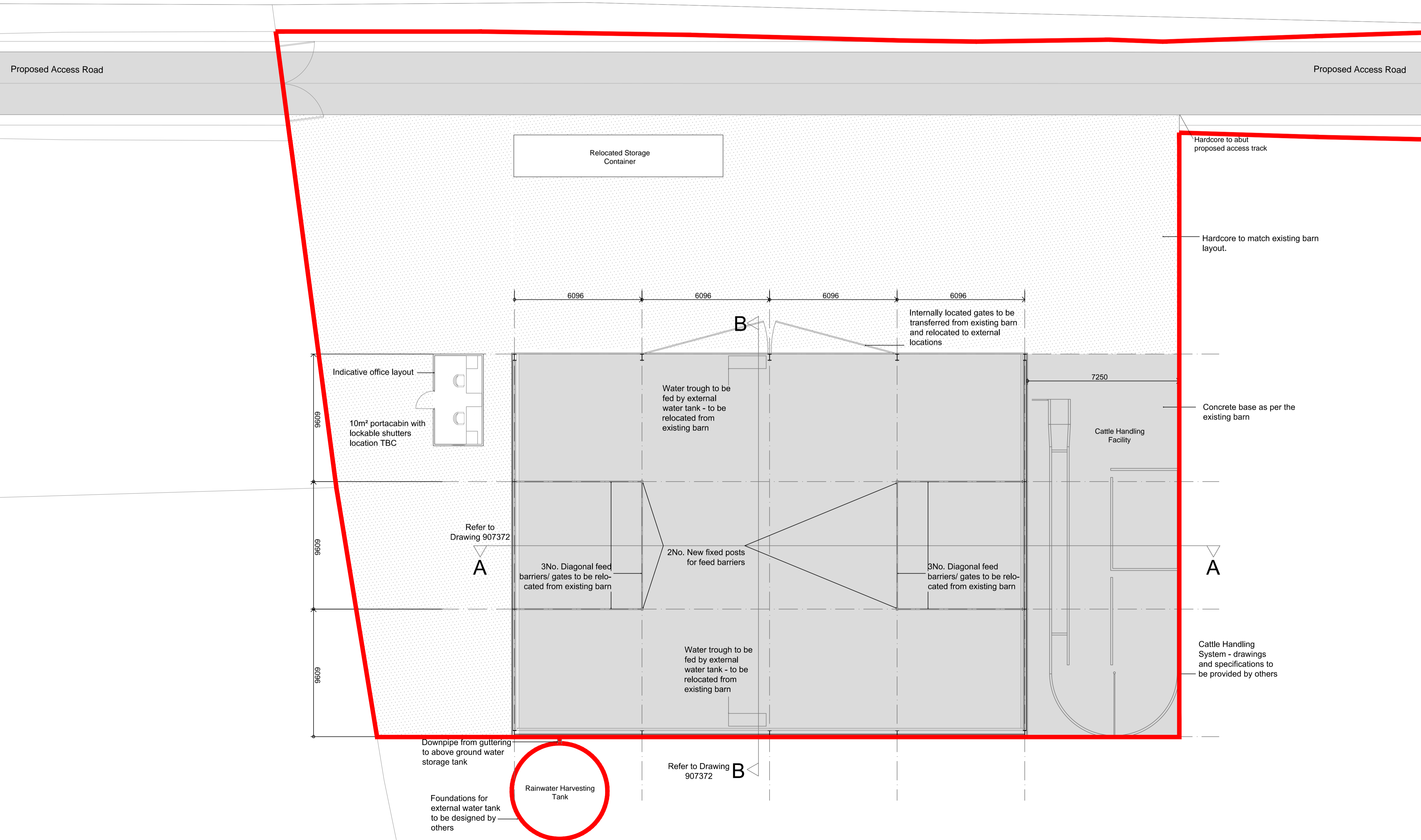
OS MAP DATA REPRODUCED BY PERMISSION OF ORDNANCE SURVEY ON BEHALF OF HMSO. © CROWN COPYRIGHT 2004. ALL RIGHTS RESERVED. ORDNANCE SURVEY LICENCE NUMBER 0100040692.

Key:

- Boundary Line - Extents of Planning Application (Red line is drawn to extent of earthworks for proposed access track)
- Hardcore Surface
- Concrete Base

Structural Design to be done by others.

Design and Build Contractor to provide foundations details.



Rev	Date	Description of Revisions	Drawn	Chkd	Appr
P08	24/02/15	TREES REMOVED AND hardcore ADDED	CB	JW	GN
P07	20/02/15	BUILDING AND YARD LOCATION AMENDED	CB	JW	GN
P06	16/02/15	TITLE BLOCK AND KEY AMENDED	CB	JW	GN
P05	11/02/15	ISSUED FOR PLANNING - SIZE/SCALE CHANGED	CB	JW	GN
P04	06/01/15	ISSUE	CB	JW	GN
P03	12/12/14	ISSUE	CB	JW	GN
P02	23/06/14	TITLE BLOCK AMENDMENT	CB	JW	GN
P01	23/06/14	ISSUE	CB	JW	GN

Status

S2 FOR INFORMATION



Contractor(s)

ATKINS

The Axis
10 Holliday Street
Birmingham
West Midlands
B1 1TF
Tel: +44 (0)121 483 5000
Fax: +44 (0)121 483 6333

Project

HOME FARM AGRICULTURAL BUILDING AND ACCESS TRACK

Drawing Title

DETAILED PROPOSED FLOOR PLAN

Designed	CB	Signed	Date	24/02/15
Drawn	CB	Signed	Date	24/02/15
Checked	JW	Signed	Date	24/02/15
Approved	GN	Signed	Date	24/02/15

Scale(s) 1:100 at A1
ELR & Mileage

Alternative Reference Sheet 1 of 1

Drawing Number 5114534-ATK-DRG-AR-907371 P08
Revision