

OXFORDSHIRE COUNTY COUNCIL STREET LIGHTING SPECIFICATION

- Column** 5m tubular steel column (BS EN 40) 809407 (Style 2 dng HSD13010) suitable for post-top mounted lantern. Factorialised wind loading factor for Oxfordshire as specified in P05547 2009 for design of lighting columns
- Bracket** Post top mounted at 5° uplit
- Lantern** Philips Dial WRT1 ARC 30 size Extreme gear - Green RAL 6013 Ref. ASH50GPHDAL1GS482ZDFRML
- Lamp** 50 WATT SMDT plus
- Lamp optic setting** 2655 SHN17C
- Switch** One piece photocell (SELCO 8482) set at 55/28 Lux
- Control gear** Philips Dial Extreme Part night dimmed with 7 1/2 hours dim from 22.00 to 05.30 to 50%
- Column finish** EPA Compliant Epoxy/Polyurethane Amended Oxfordshire County Council Specification. (a) Requirements for Lighting Columns, Brackets Arms & Doors (See Oxfordshire amended Appendix 190). Upper Additional overall coats to be applied in shop to a clean degreased, lightly abraded dry surface.
- 1st Coat** Internal road to 250mm above ground level & External overall Item 121, Densylite 2 Pack Extended Cure Epoxy MDO, ref 50-270. Airless Spray, Minimum Dry Film Thickness 100 microns
- 2nd Coat** External road to 250mm above ground level Densylite Epoxide 2 Glass Reinforced 2 Pack Epoxy, ref 79-489. Brush/Airless Spray, Minimum Dry Film Thickness 200 microns
- 3rd Coat** External overall Densylite Densol 200 2 Pack Polyurethane Finish RAL 6013 (or other specified colour) 200 - line, Conventional Spray, Minimum Dry Film Thickness 75 microns

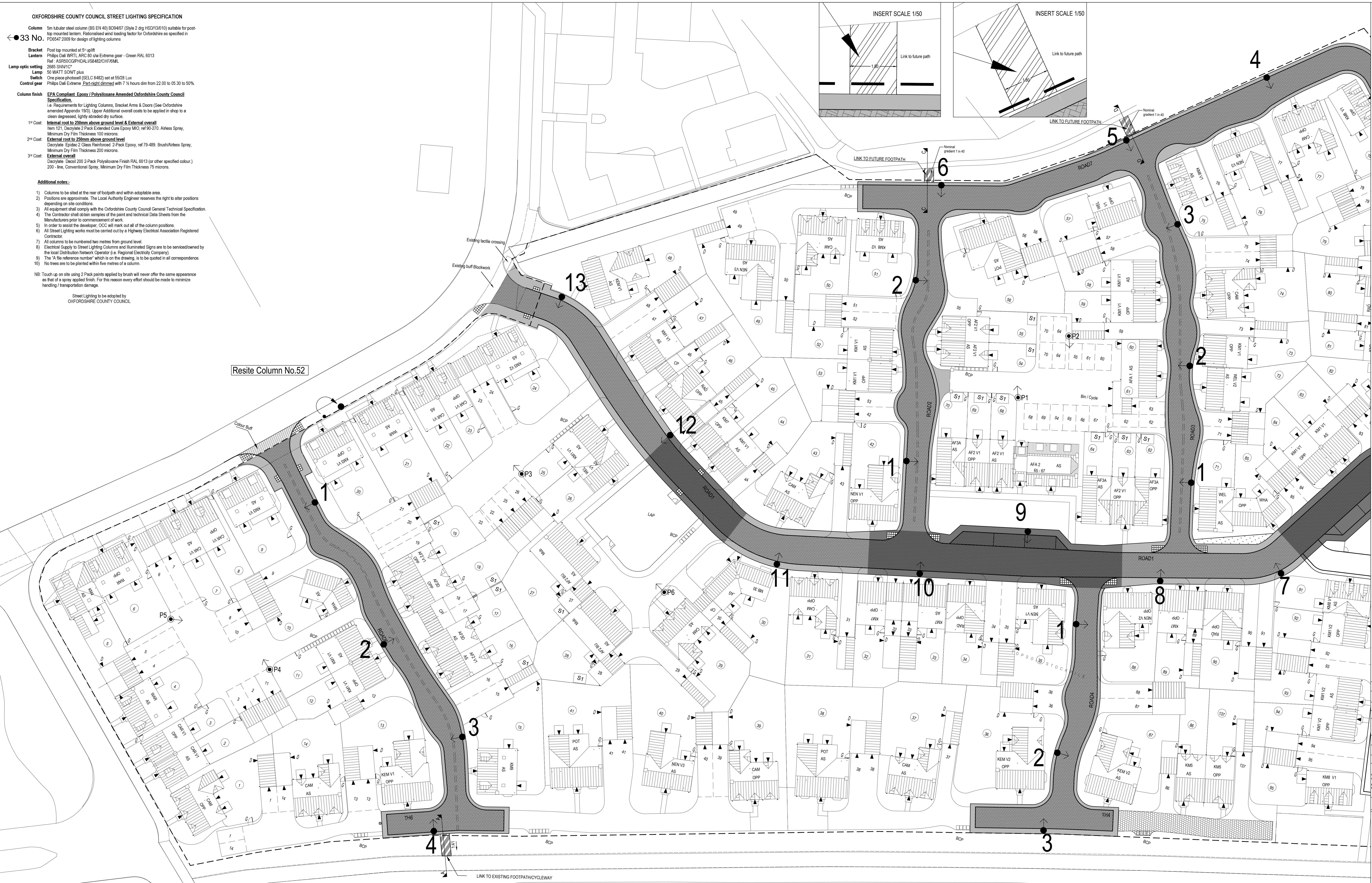
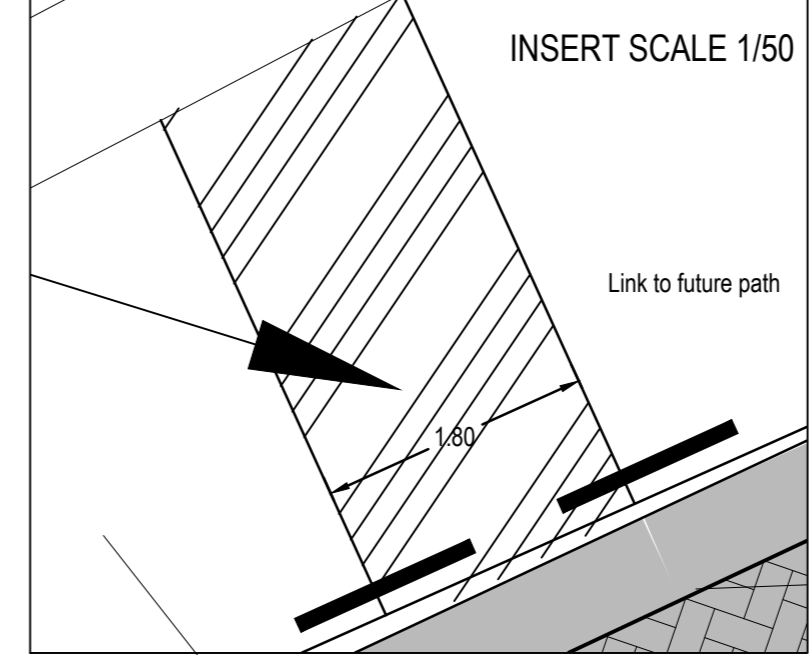
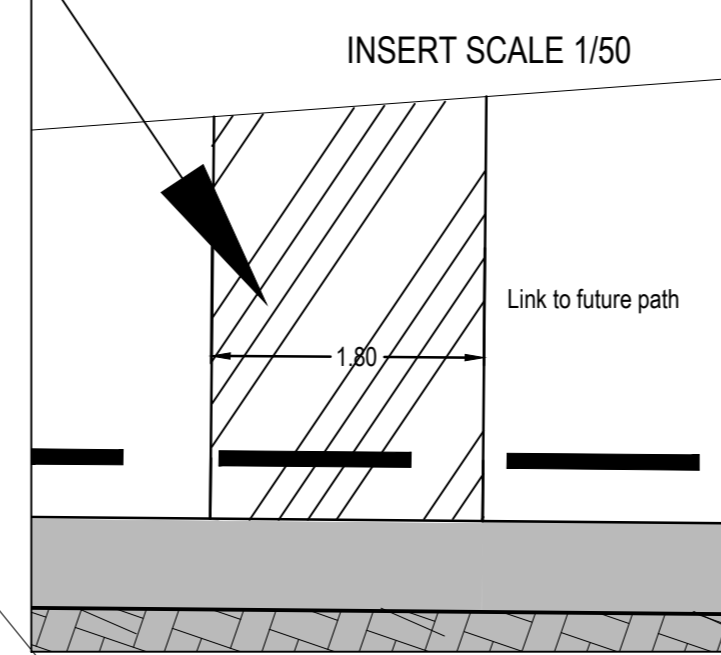
Additional notes:

- Columns to be sited at the rear of footpath and within adoptable area.
- Positions are approximate. The Local Authority Engineer reserves the right to alter positions depending on site conditions.
- All equipment shall comply with the Oxfordshire County Council General Technical Specification.
- The Contractor shall obtain samples of the paint and technical Data Sheets from the Manufacturers prior to commencement of work.
- In order to assist the developer, OCC will mark out all of the column positions.
- All Street Lighting works must be carried out by a Highway Electrical Association Registered Contractor.
- All columns to be numbered two metres from ground level.
- Electrical Supply to Street Lighting Columns and Illuminated Signs are to be serviced down by the local Distribution Network Operator (i.e. Regional Electricity Company).
- The 'A' site reference number which is on the drawing, is to be quoted in all correspondence.
- No trees are to be planted within five metres of a column.

NB: Touch up on site using 2 Pack paints applied by brush will never offer the same appearance as that of a spray applied finish. For this reason every effort should be made to minimize handling / transportation damage.

Street Lighting to be adopted by OXFORDSHIRE COUNTY COUNCIL

Resite Column No.52



KEY

ADOPTABLE

- Blockwork Road Construction: Colour Natural Grey. Laid Herringbone Pattern 45° to Kerb.
- Blockwork Footway Construction: Colour Natural Grey. Laid Herringbone Pattern 45° to Kerb.
- Blockwork Road Construction: Colour Charcoal. Laid Herringbone Pattern 45° to Kerb.
- Blockwork Footway Construction: Colour Charcoal. Laid Herringbone Pattern 45° to Kerb.
- Blockwork Road Construction: Colour Buff. Laid Herringbone Pattern 45° to Kerb.
- Blacktop footpath link to cycleway
- Grass Verge

4 Adoptable Street Lighting Column

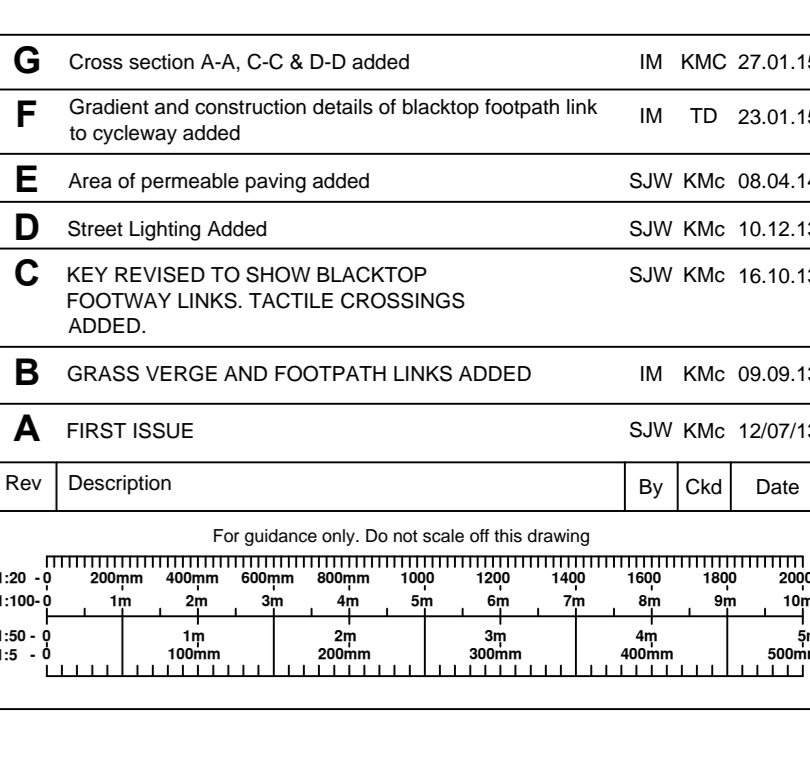
PRIVATE

P10 Private Street Lighting Column (same type as adoptable)

Proposed private access road to be constructed as permeable blockwork paving.

Rev | **Description** | **By** | **Clk** | **Date**

F	Cross section A-A, C-C & D-D added	IM	KMC	27.01.15
G	Gradient and construction details of blacktop footpath link to cycleway added	IM	TD	23.01.15
E	Area of permeable paving added	S/W	KMC	08.04.14
D	Street Lighting Added	S/W	KMC	10.12.13
C	KEY REVISED TO SHOW BLACKTOP FOOTWAY LINKS. TACTILE CROSSINGS ADDED	S/W	KMC	16.10.13
B	GRASS VERGE AND FOOTPATH LINKS ADDED	IM	KMC	09.09.13
A	FIRST ISSUE	S/W	KMC	12/07/13



RPS

Noble House, Linford Drive, Linford Wood, Milton Keynes MK14 6EP
T: +44 (0)1908 669898 E: rps@rpsgroup.com F: +44 (0)1908 669899

Client Bellway

Project KINGSMERE, BICESTER

Title ADOPTABLE SURFACE FINISHES SHEET 1 OF 2

Status	Scale	Date Created
Preliminary	1:250 @ A0	12/07/13
Project Leader	Drawn By	Checked by
KMc	SJW	KMc
Drawing Number	Rev	
JKK6647 -103	G	

