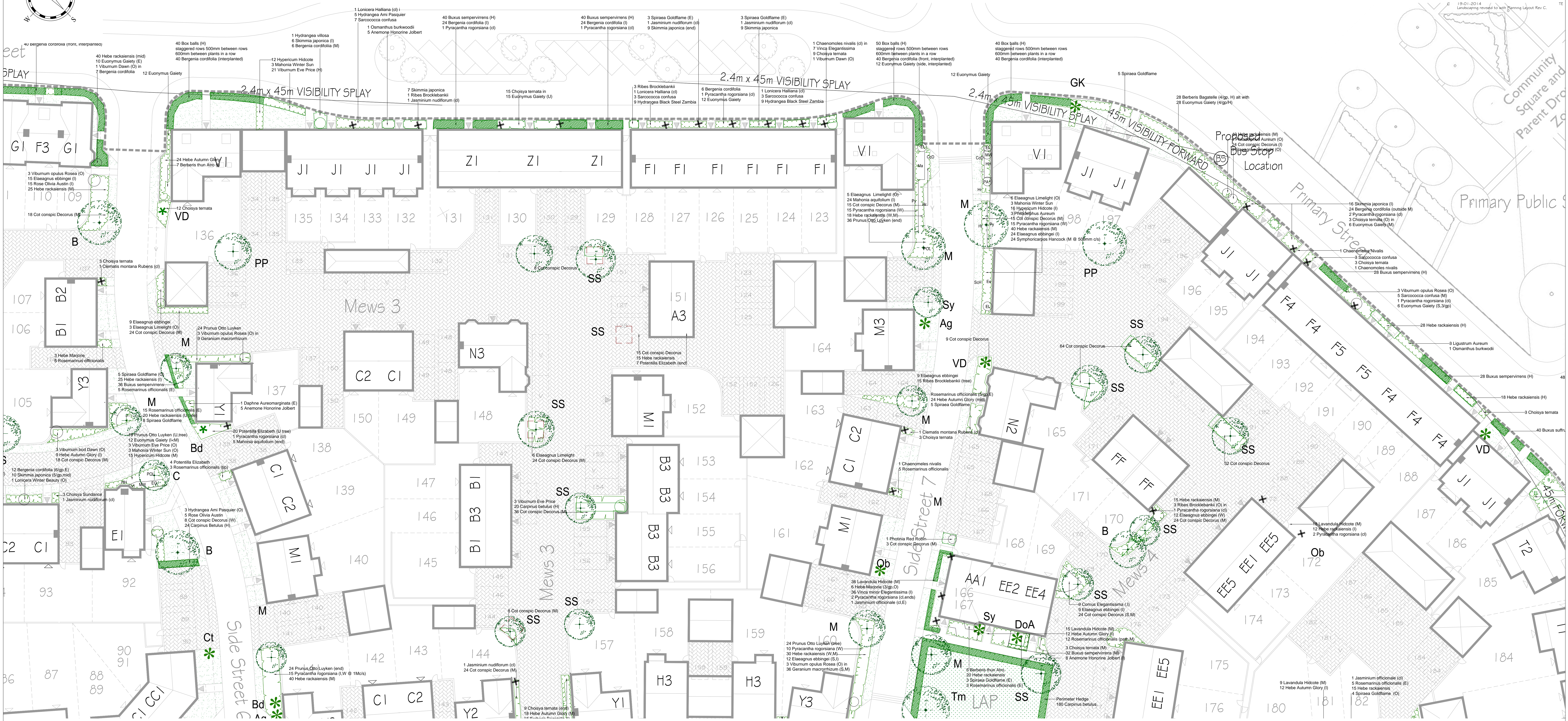


# PARCELS KMA & KMB, KINGSMERE, BICESTER



### KEY

- PROPOSED TREE PLANTING
- EXISTING TREES
- PROPOSED SHRUB PLANTING
- PROPOSED SPECIMEN SHRUB PLANTING
- PROPOSED HEDGE
- TURF - FRONT GARDENS, CLOSE MOWN.
- GRASS WILDFLOWER SEED MIX - REAR GARDENS AND COMMUNAL AREAS, CLOSE MOWN.
- TREE ROOT SOIL CELLS 2M X 2M

### OUTLINE PLANTING SPECIFICATION

GENERAL: All work to be undertaken in accordance with BS4428:1989 and BS7370:1993. SERVICES: No trees to be planted within 3 meters of existing or proposed foul, surface water drain or soakaway. Planting adjacent to other services shall be in accordance with the guidelines laid down by the relevant service authority.

### WILDFLOWER SEED

For rear gardens, communal areas and pond. Eradicate weeds by repeat cultivation or herbicide. Include for ploughing, harrow and rake of large areas to produce a medium till and soil to produce a fine surface. Remove all stones and builders rubble over 25mm that come to the surface. Supply, sow and establish agreed seed mix to suppliers recommendations. Maintain as long grass with no cuts from June to September to facilitate natural seeding in combination with spring mowing. Timing subject to conditions and sward development.

### LANDSCAPE MANAGEMENT PLAN. 15 year summary sheet

Operation	Time in years	1	2	3	4	5	...	15yr
Grass - Close mown. Open areas.								
Grass - Wildflowering grass areas								
Establish to suppliers recommendations								
Grass - Hedgerow margins. 1 cut per year to control sward (September).								

### PLANT SCHEDULE. All to BS3336 Part 1:

Structure	Quantity	Notes
STRUCTURE TREES:		
All container grown 80L. Alpot if planted outside the recognised bare root season (Nov to March). Trees within 20m of back of highway/footpath kerb to have 2M clear stem and planted with a Root Barrier or deflector and irrigation system.		

### ORNAMENTAL SHRUBS

Species	Quantity	Notes
Abies grandifolia	3	(Purple barberry)
Chamaenerion	3	(Golden meadow)
Cornus alba	3	(Dog rose)

### NATIVE HEDGE

Species	Quantity	Notes
Acacia dealbata	3	(Wattle)
Chamaenerion	3	(Golden meadow)
Cornus alba	3	(Dog rose)

### LANDSCAPING LAYOUT SHEET 5 OF 6

Project: PARCELS KMA & KMB, KINGSMERE, BICESTER  
Scale: 1:200  
Date: 09/14  
Client: The NOBLE Consultancy

## LANDSCAPING LAYOUT SHEET 5 OF 6