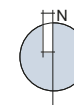


- Site Boundary
- LTx Long Term Noise Monitoring Locations
- STx Long Term Noise Monitoring Locations
- x Sensitive Receptor Locations

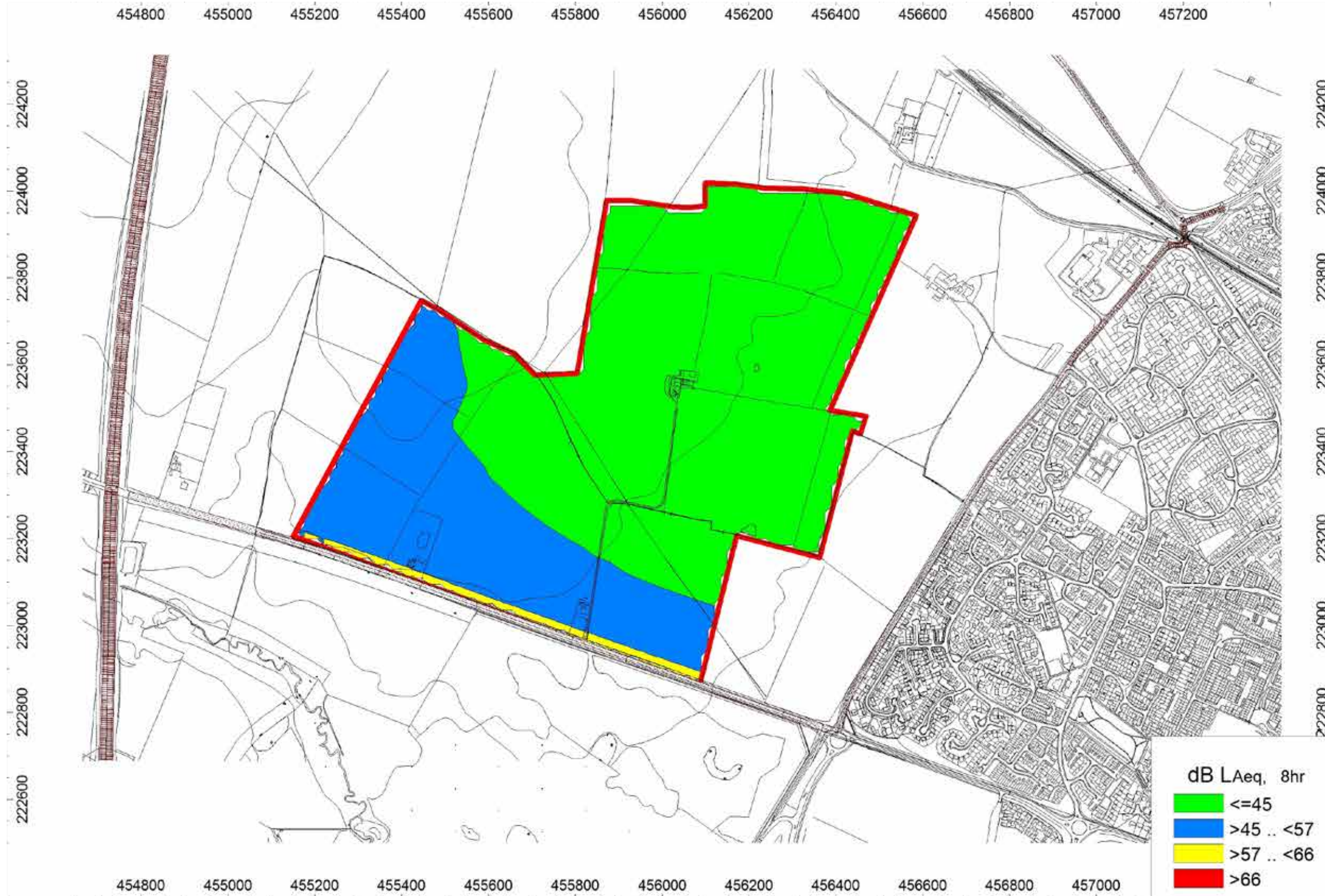
Project Details	EED14995-100: Himley Village
Figure Title	Figure 10.1: Noise Survey Monitoring Locations and Sensitive Receptors
Figure Ref	EED14995-100_GR_ES_10.1B
Date	2014
File Location	\\nt-incls\weed\projects\eed14995\100\graphics\es\issued figures



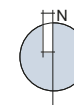
Planning Application Boundary



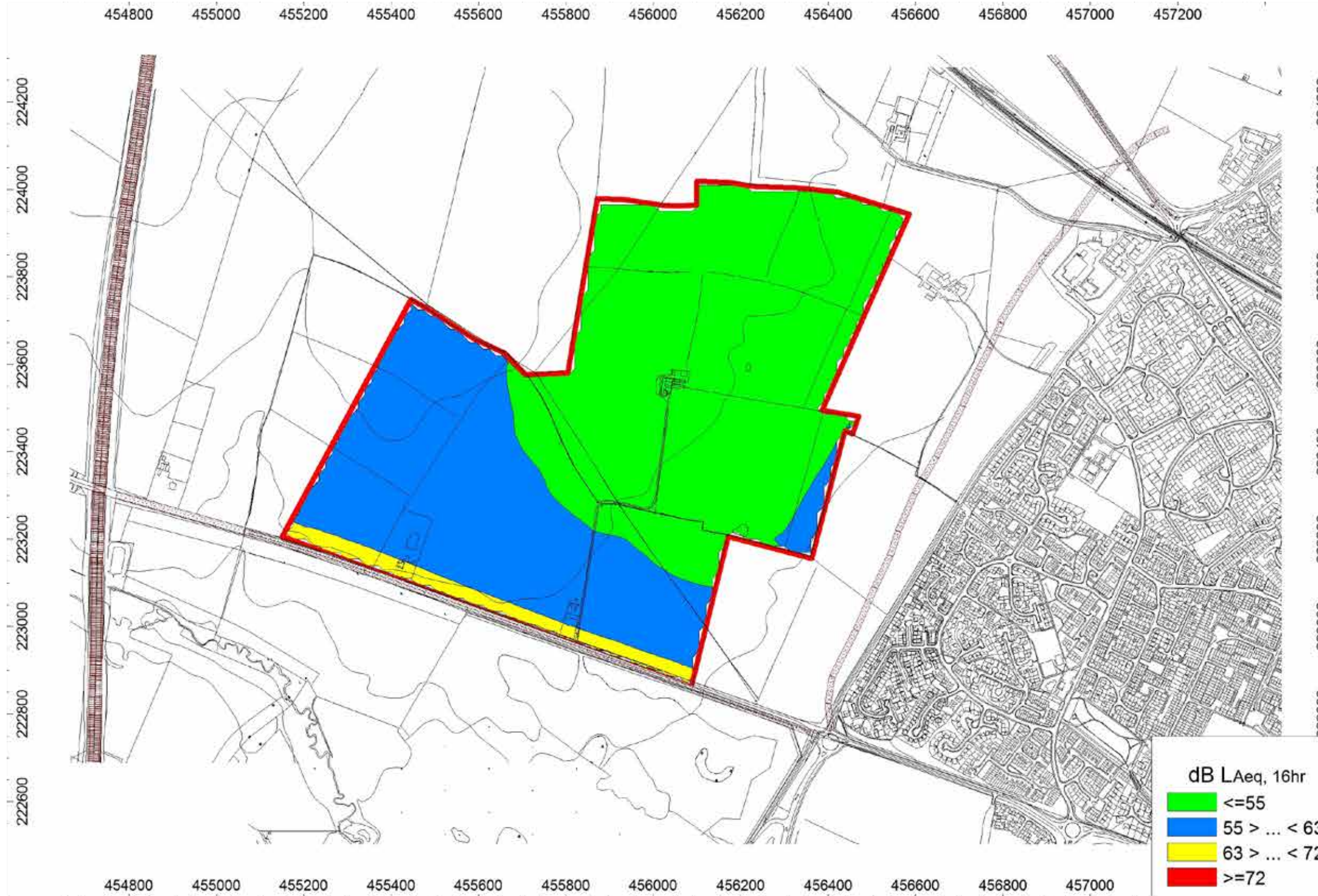
Project Details	EED14995-100: Himley Village
Figure Title	Figure 10.2: Baseline Noise Contour Plot - Daytime
Figure Ref	EED14995-100_GR_ES_10.2A
Date	2014
File Location	\\nt-lncs\weed\projects\eed14995\100\graphics\es\issued figures



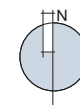
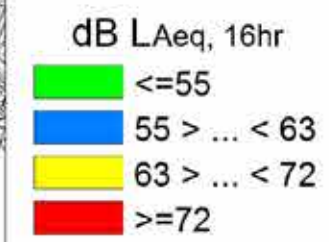
Planning Application Boundary



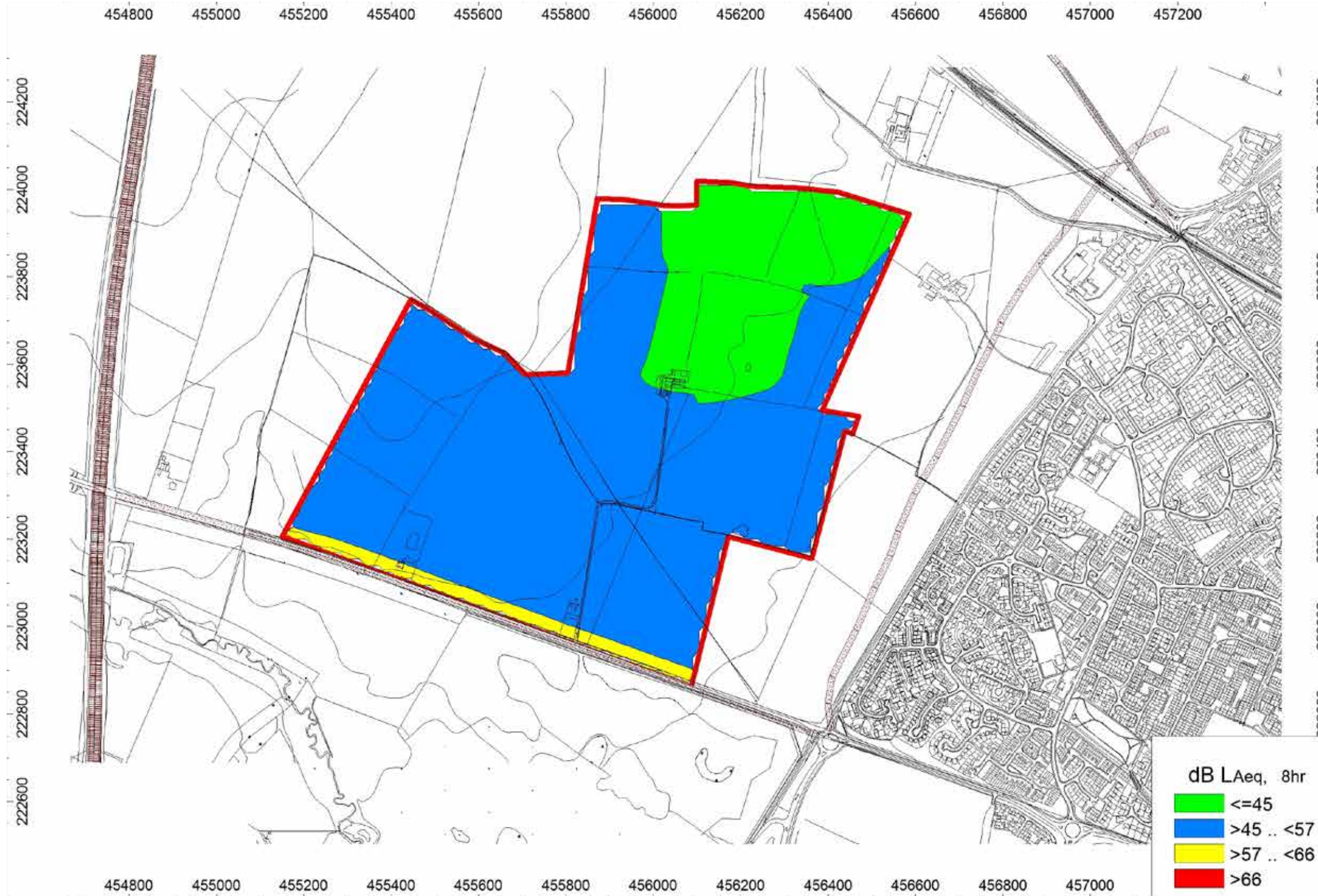
Project Details	EED14995-100: Himley Village
Figure Title	Figure 10.3: Baseline Noise Contour Plot - Night-Time
Figure Ref	EED14995-100_GR_ES_10.3A
Date	2014
File Location	\\nt-lncsl\weed\projects\eed14995\100\graphics\issued figures



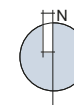
 Planning Application Boundary



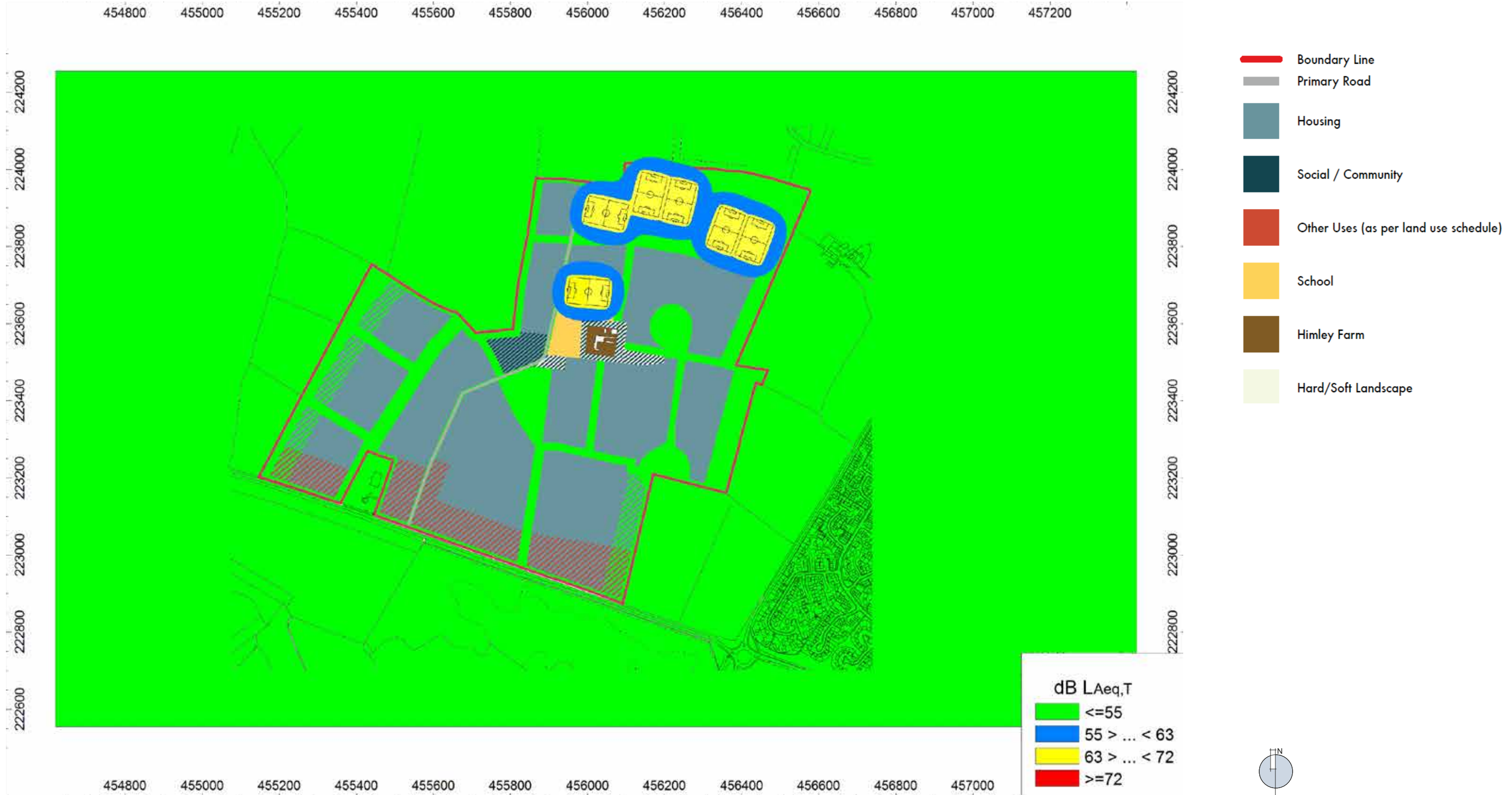
Project Details	EED14995-100: Himley Village
Figure Title	Figure 10.4: 2031 Noise Contour Plot - Daytime
Figure Ref	EED14995-100_GR_ES_10.4A
Date	2014
File Location	\\nt-lncsl\weed\projects\eed14995\100\graphics\es\issued figures



Planning Application Boundary



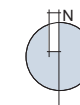
Project Details	EED14995-100: Himley Village
Figure Title	Figure 10.5: 2031 Noise Contour Plot - Night-Time
Figure Ref	EED14995-100_GR_ES_10.5A
Date	2014
File Location	\\nt-lncs\weed\projects\eed14995\100\graphics\es\issued figures







Project Details	EED14995-100: Himley Village
Figure Title	Figure 10.6: Indicative Noise Levels from Sports Pitches Only
Figure Ref	EED14995-100_GR_ES_10.6A
Date	2014
File Location	\\nt-incs\weed\projects\eed14995\100\graphics\es\issued figures

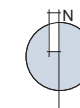
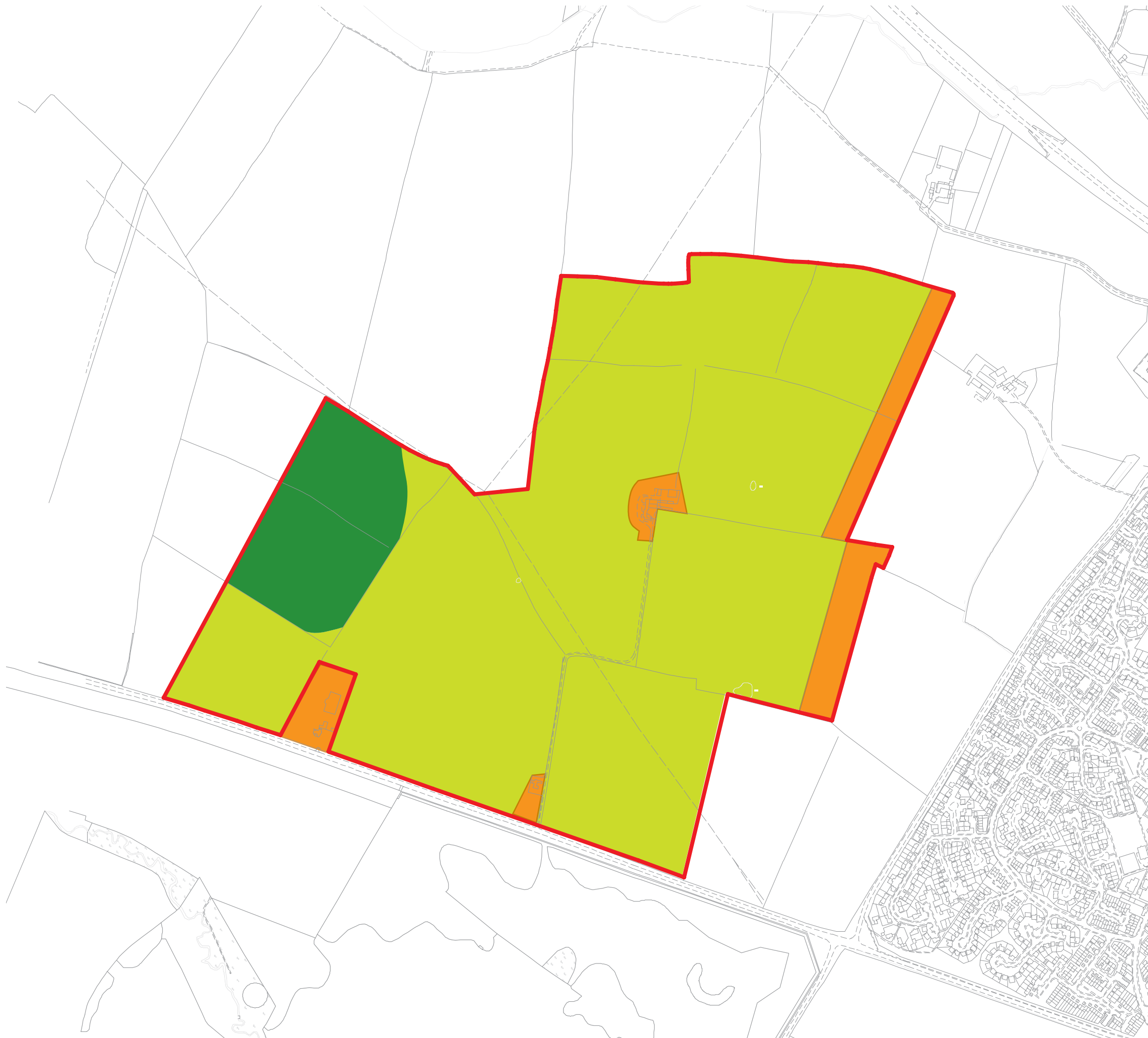


- Planning Application Boundary
- Himley Farm
- Himley Farm Bungalow
- Field
- Field Growing Crop
- Waste Storage Area
- Overhead Power Lines
- Drainage Ditch
- Fuel Tank
- Electric Fence
- Pond

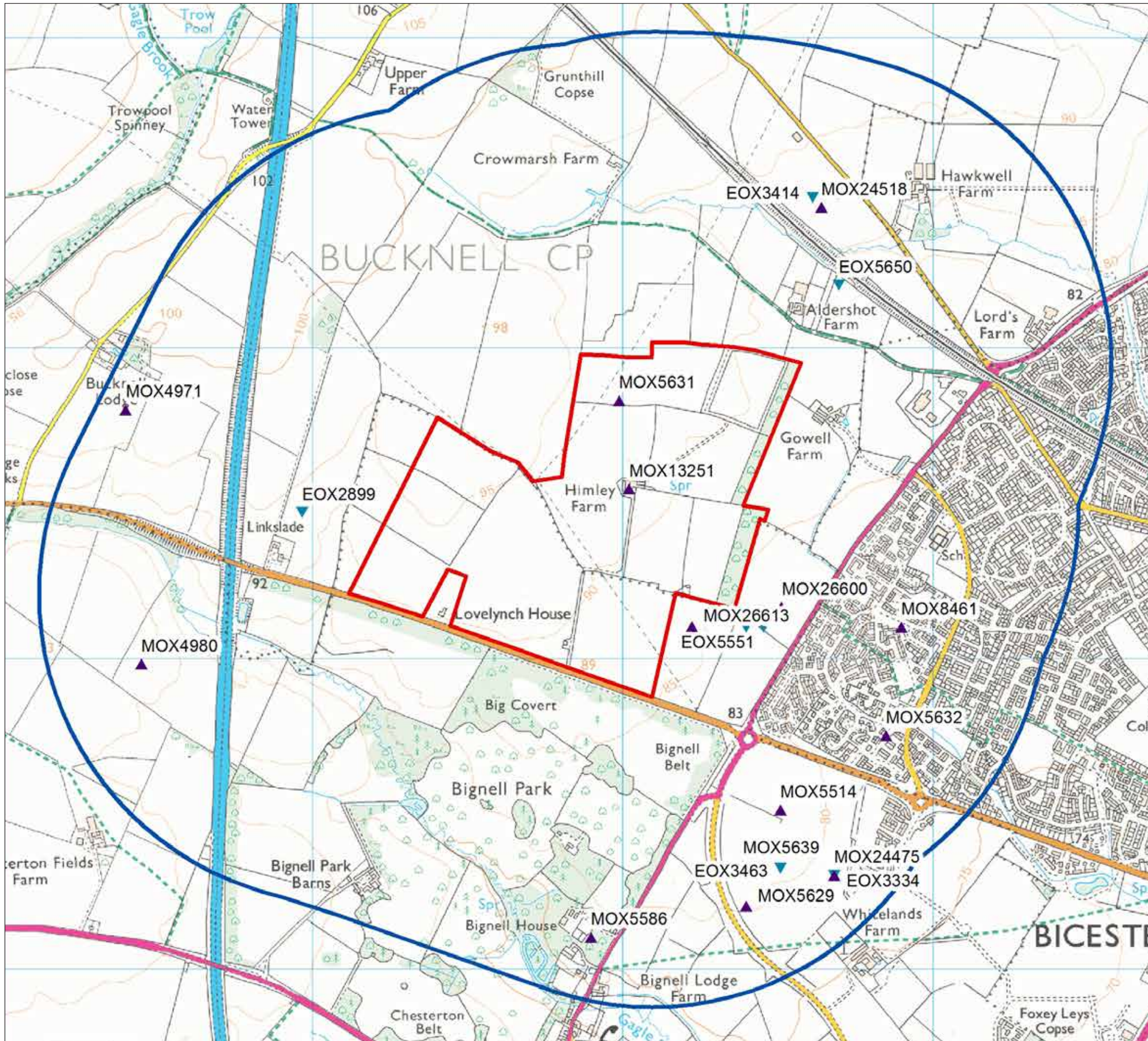






Project Details	EED14995-100: Himley Village
Figure Title	Figure 12.1: Site Features Plan
Figure Ref	EED14995-100_GR_ES_12.1A
Date	2014
File Location	\\nt-hcs\weed\projects\eed14995\100\graphics\es\issued figures

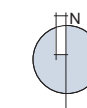
-  Planning Application Boundary
-  Grade 3A
-  Grade 3B
-  Non Agricultural



Project Details	EED14995-100: Himley Village
Figure Title	Figure 13.1: Agricultural Land Classification Himley Village
Figure Ref	EED14995-100_GR_ES_13.1A
Date	2014
File Location	\\nt-lncs\weed\projects\eed14995\100\graphics\es\issued figures



-  Planning Application Boundary
-  1km Search Area
-  Monument Points
-  Event Points



Project Details	EED14995-100: Himley Village
Figure Title	Figure 15.1: Historic Environment Record Data
Figure Ref	EED14995-100_GR_DBA_15.1A
Date	2014
File Location	\\nt-lncs\weed\projects\eed14995\100\graphics\dba\issued figures