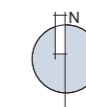
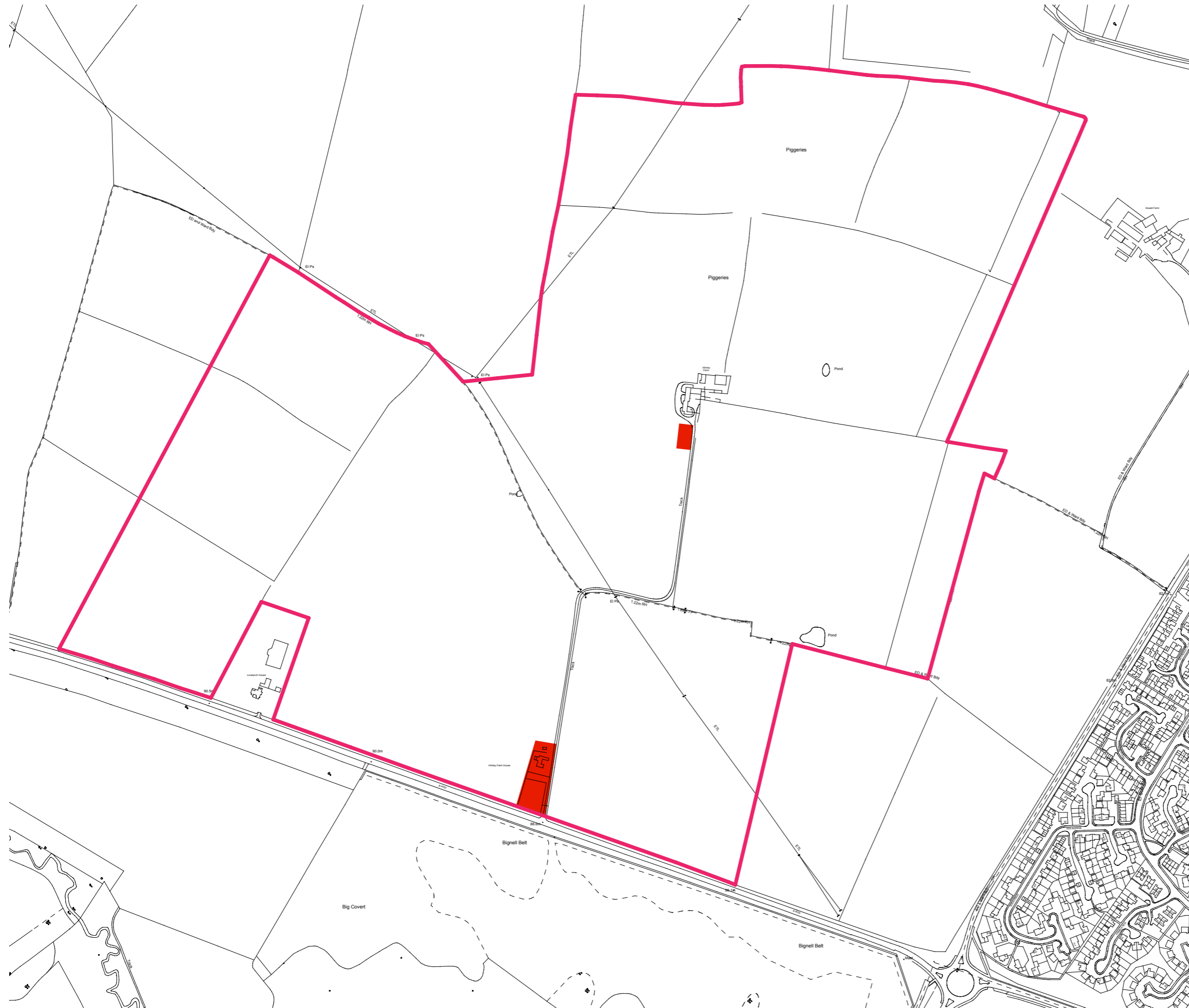
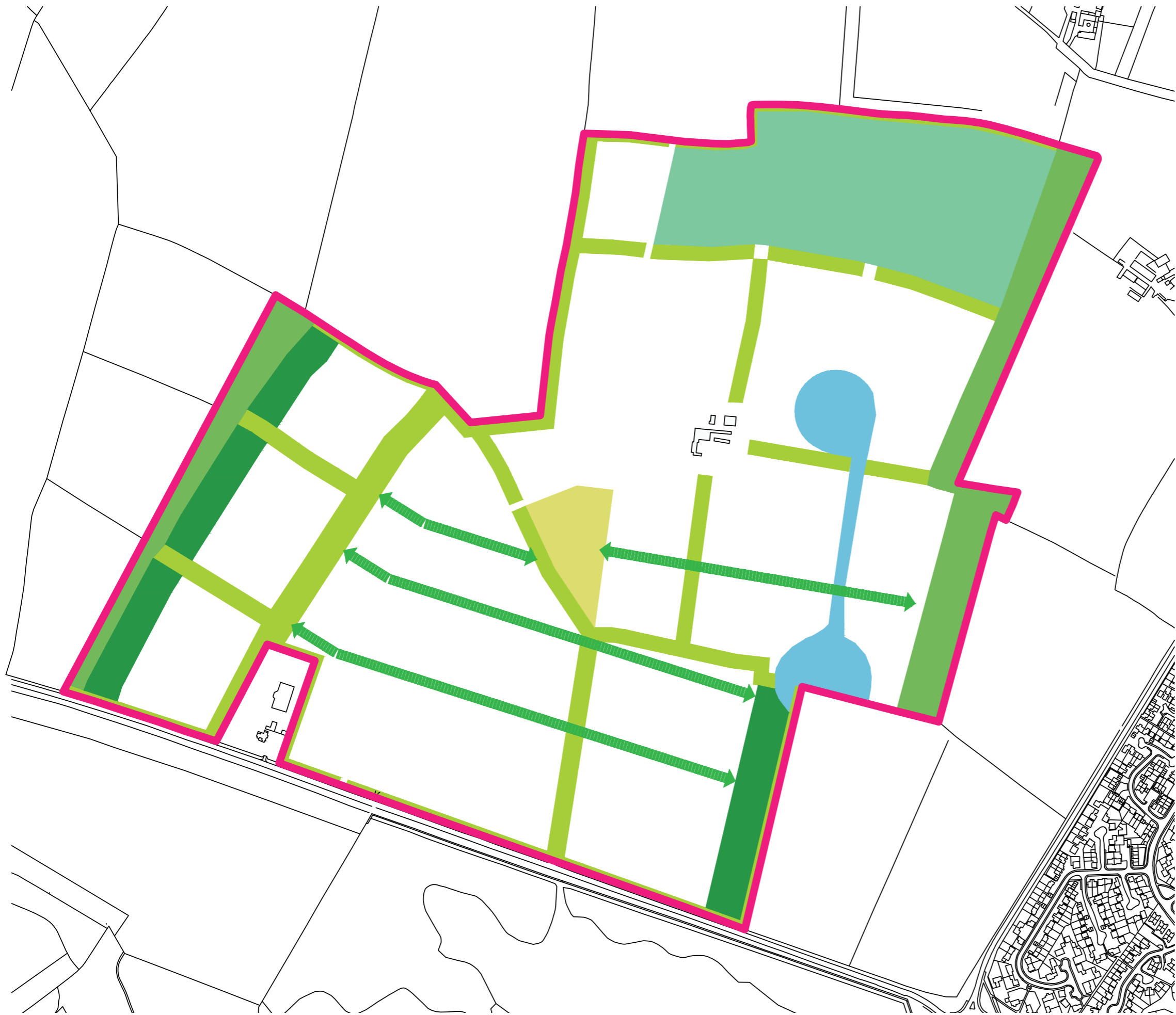


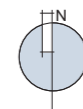
- Planning Application Boundary
- Buildings to be Demolished



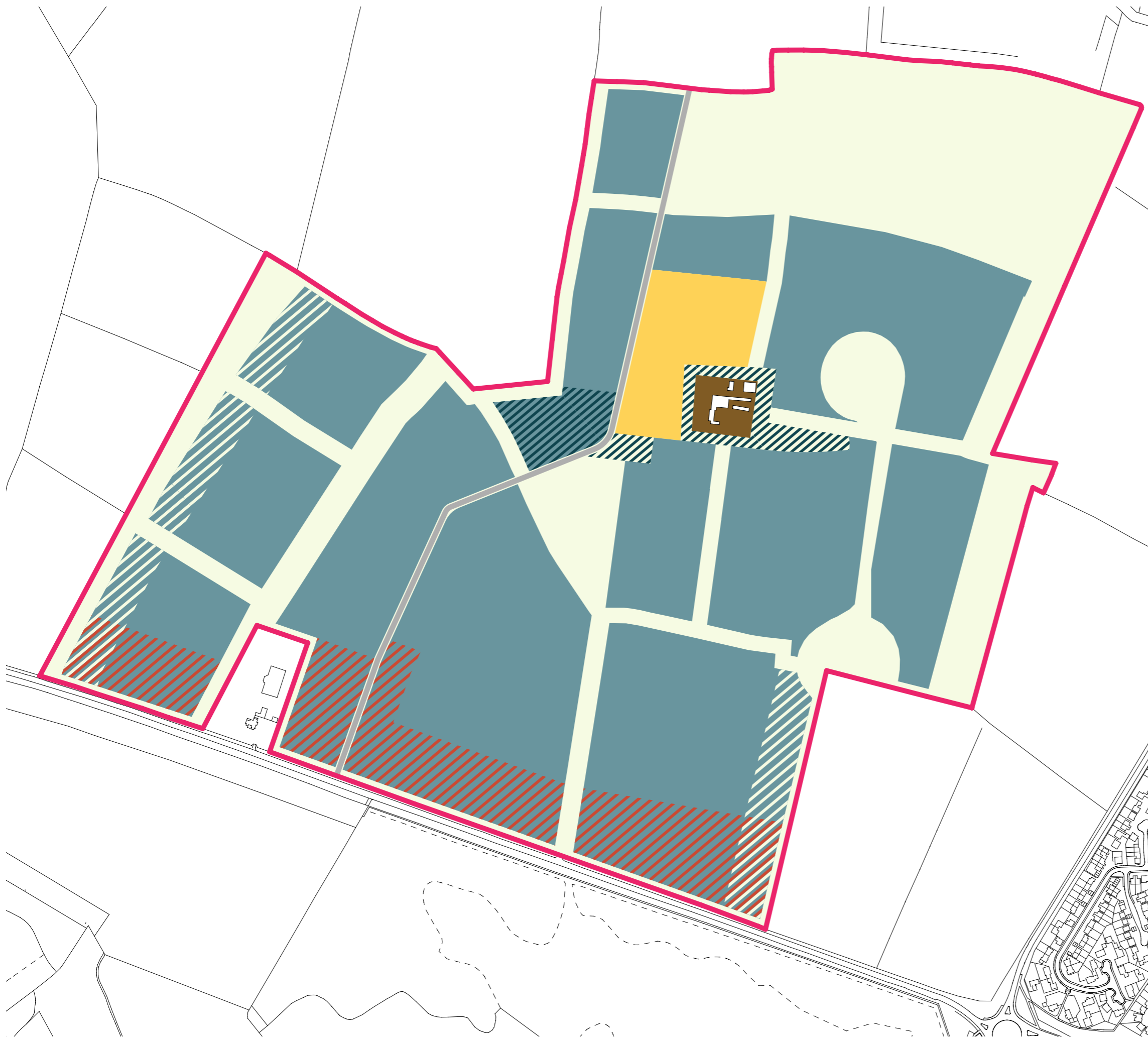
| | |
|------------------------|---|
| Project Details | EED14995-100: Himley Village |
| Figure Title | Figure 5.1: Demolition Plan |
| Figure Ref | EED14995-100_GR_ES_5.1A |
| Date | 2014 |
| File Location | \\nt-lncs\weed\projects\eed14995\100\graphics\es\issued figures |



-  Hedgerow corridor
-  Playing fields
-  Existing woodland
-  Village Green
-  Newt Corridor
-  Housing in woodland setting
-  Residential parkland/corridor
(refer to Appendix 4.06 Landscape Requirements)

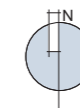


| | |
|------------------------|---|
| Project Details | EED14995-100: Himley Village |
| Figure Title | Figure 5.2: Landscape Parameter Plan |
| Figure Ref | EED14995-100_GR_ES_5.2A |
| Date | 2014 |
| File Location | \\nt-incs\weed\projects\eed14995\100\graphics\es\issued figures |

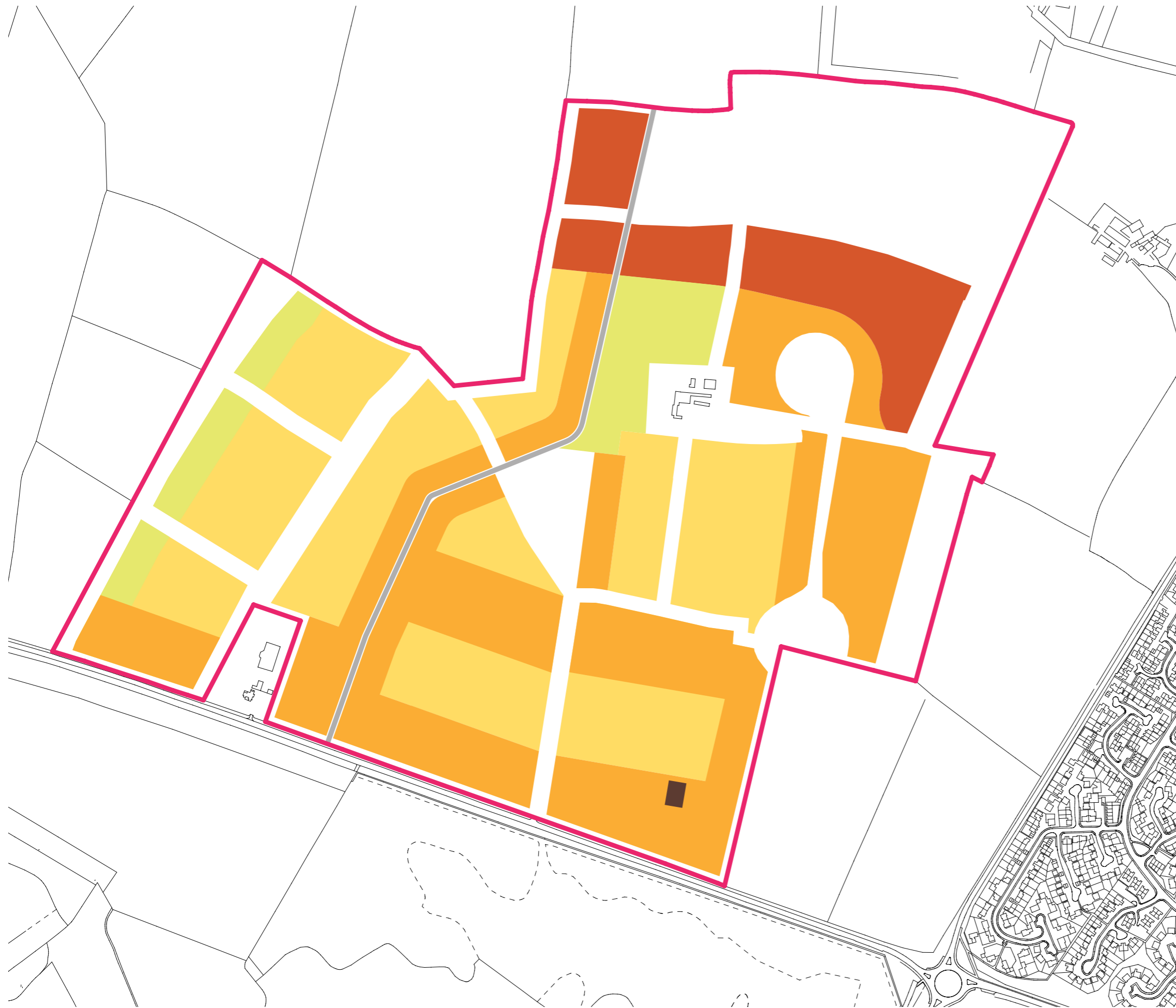


- Boundary Line
- Primary Road
- Housing
- Social / Community
- Other Uses (as per land use schedul
- School
- Himley Farm
- Hard/Soft Landscape

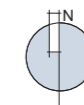
Note:
Hatching indicates flexibility/mix of uses of the types shown



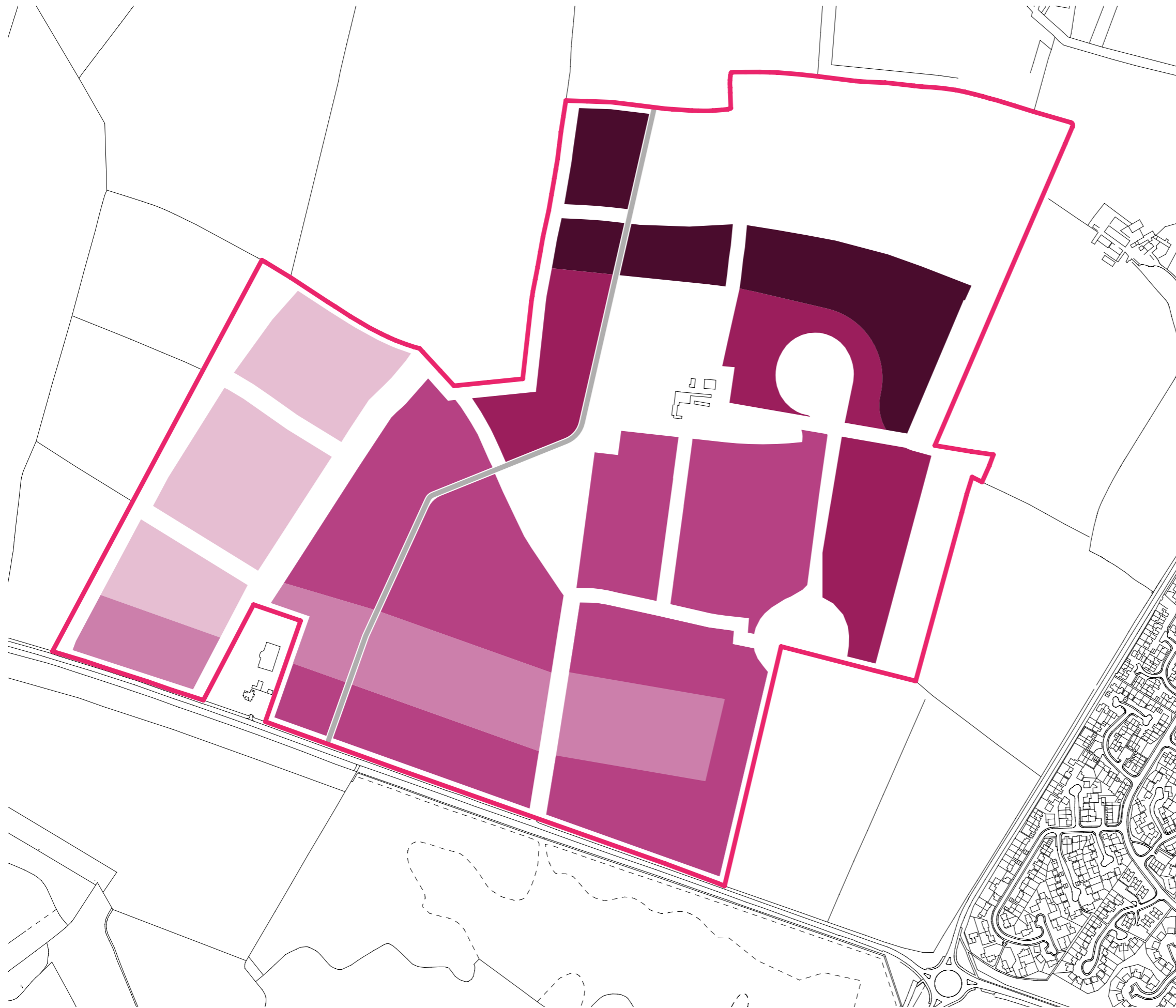
| | |
|------------------------|--|
| Project Details | EED14995-100: Himley Village |
| Figure Title | Figure 5.3: Land Use Parameter Plan |
| Figure Ref | EED14995-100_GR_ES_5.3A |
| Date | 2014 |
| File Location | \\nt-lncsl\weed\projects\eed14995\100\graphics\es\issued figures |



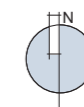
- Boundary Line
- Primary Road
- Minimum height 4m
Maximum height 19m
- Minimum height 4m
Maximum height 16m
- Minimum height 4m
Maximum height 13m
- Minimum height 4m
Maximum height 10m
- Development to facilitate appropriate air dispersion which rises above 16m (up to a maximum 20m) will not exceed 2% of this area shown



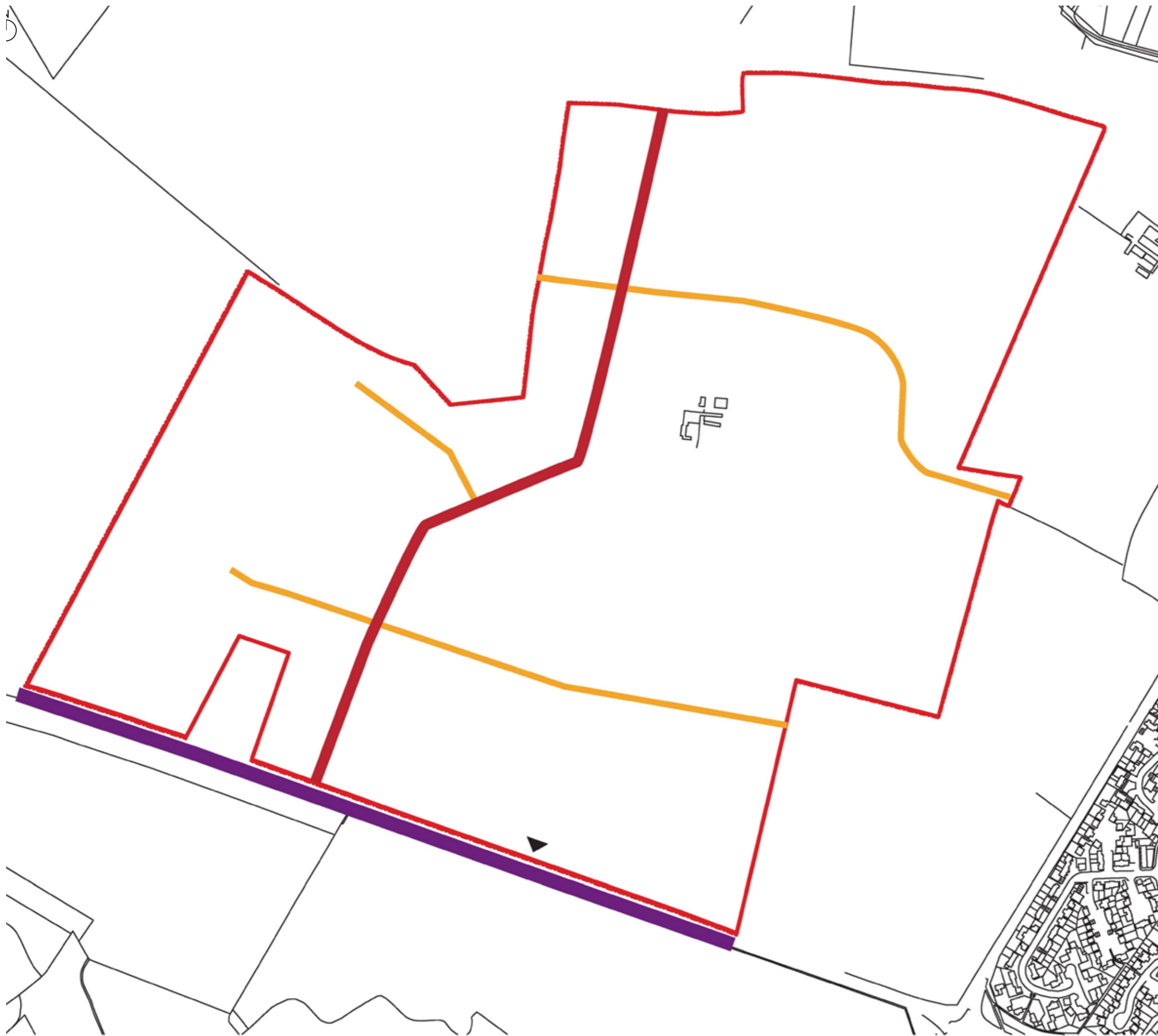
| | |
|------------------------|---|
| Project Details | EED14995-100: Himley Village |
| Figure Title | Figure 5.4: Building Heights Parameter Plan |
| Figure Ref | EED14995-100_GR_ES_5.4A |
| Date | 2014 |
| File Location | \\nt-lncs\weed\projects\leed14995\100\graphics\issued figures |



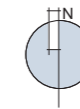
- Boundary Line
- Primary Road
- 35 to 55 dwellings per hectare
- 30 to 45 dwellings per hectare
- 25 to 40 dwellings per hectare
- 20 to 35 dwellings per hectare
- 15 to 25 dwellings per hectare



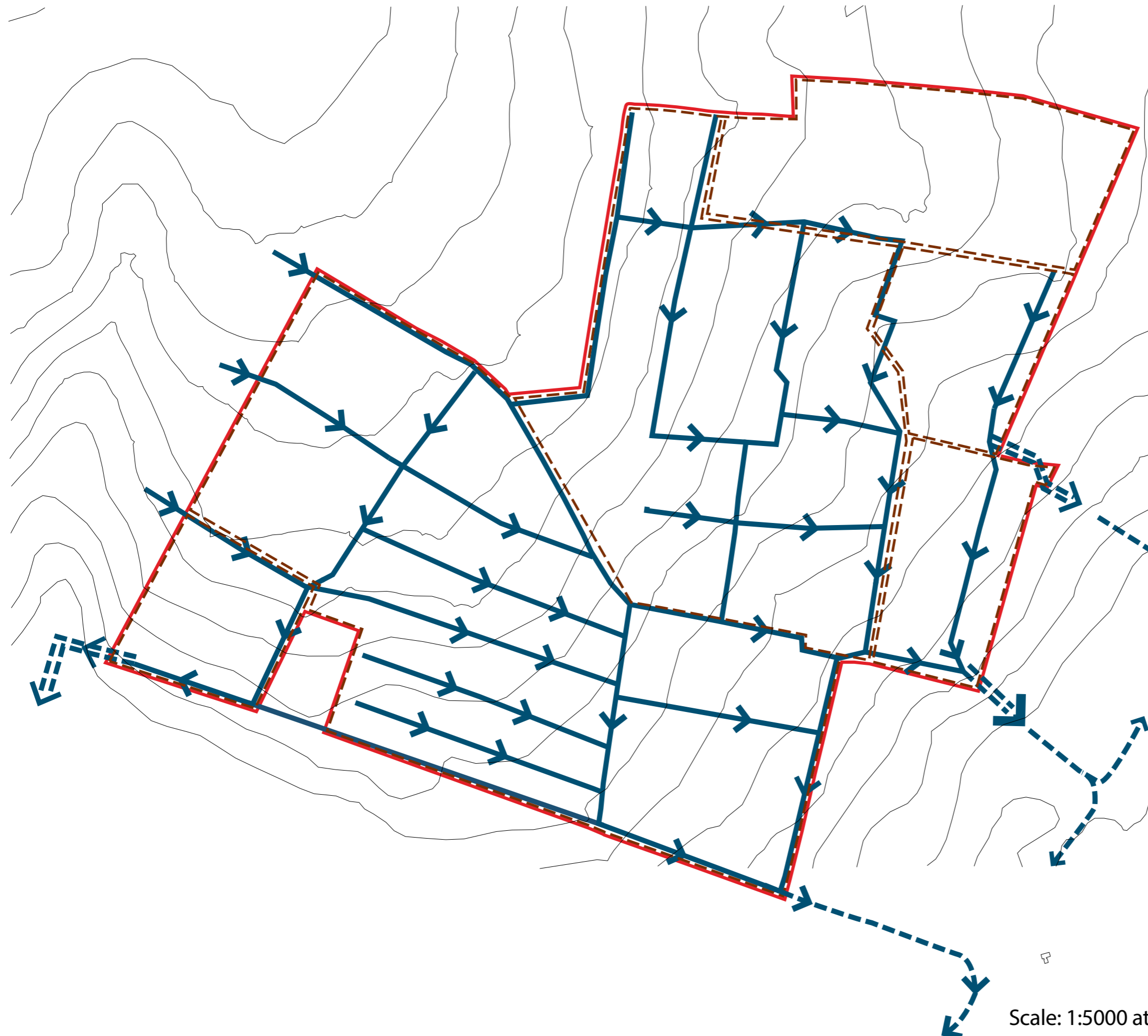
| | |
|------------------------|--|
| Project Details | EED14995-100: Himley Village |
| Figure Title | Figure 5.5: Density Parameter Plan |
| Figure Ref | EED14995-100_GR_ES_5.5A |
| Date | 2014 |
| File Location | \\nt-lncs\weed\projects\leed14995\100\graphics\es\issued figures |



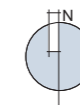
- Site boundary
- Existing Road (Middleton Stoney Road)
 - 7m carriageway (as existing)
 - 3.5m two way cycle path on north side
 - 2.0m footway on north side
- Primary street
 - 6.5m carriageway
 - 3m shared cycle and pedestrian path on both sides
- Secondary street
 - 5.5m carriageway
 - 3m shared cycle and pedestrian path on one side,
 - 2m footway on one side
- ▲ Secondary vehicle access point



| | |
|-----------------|--|
| Project Details | EED14995-100: Himley Village |
| Figure Title | Figure 5.6: Movement and Access Parameter Plan |
| Figure Ref | EED14995-100_GR_ES_5.6A |
| Date | 2014 |
| File Location | \\nt-lncs\weed\projects\leed14995\100\graphics\es\issued figures |



- Site boundary
- - - "Catchment area"
- Primary swales and direction of flow
- ⇒ Discharge into existing watercourse



Scale: 1:5000 at 1

| | |
|-----------------|---|
| Project Details | EED14995-100: Himley Village |
| Figure Title | Figure 5.7: Outline SuDS Parameter Plan |
| Figure Ref | EED14995-100_GR_ES_5.7A |
| Date | 2014 |
| File Location | \\nt-lncs\weed\projects\eed14995\100\graphics\es\issued figures |