

# Himley Village Outline Application

## Environmental Statement – Volume 2 Figures

December 2014





## Himley Village, Bicester




### Environmental Statement, Volume 2 - Figures

**Client Name:** P3Eco Ltd  
**Document Reference:** EED14995-100.R.2.1.1  
**Project Number:** EED14995

#### Quality Assurance – Approval Status

This document has been prepared and checked in accordance with Waterman Group's IMS (BS EN ISO 9001: 2008, BS EN ISO 14001: 2004 and BS OHSAS 18001:2007)

---

Issue	Date	Prepared by	Checked by	Approved by
Planning	December 2014	Hannah Rowe Consultant 	Steve Brindle Principal Consultant 	Joanna Bagley Associate Director 

## Disclaimer

This report has been prepared by Waterman Energy, Environment & Design Limited, with all reasonable skill, care and diligence within the terms of the Contract with the client, incorporation of our General Terms and Condition of Business and taking account of the resources devoted to us by agreement with the client.

We disclaim any responsibility to the client and others in respect of any matters outside the scope of the above.

This report is confidential to the client and we accept no responsibility of whatsoever nature to third parties to whom this report, or any part thereof, is made known. Any such party relies on the report at its own risk.

## Contents

### Volume 2 – Figures

#### Chapter 1: Introduction

- Figure 1.1 Site Location Plan
- Figure 1.2 Existing Site Plan
- Figure 1.3 NW Bicester Masterplan Applications

#### Chapter 3: Existing Land Uses

- Figure 3.1 Aerial Photograph
- Figure 3.2 Sensitive Receptors

#### Chapter 5: The Proposed Development

- Figure 5.1 Demolition Plan
- Figure 5.2 Landscape Parameter Plan
- Figure 5.3 Landuse Parameter Plan
- Figure 5.4 Building Heights Parameter Plan
- Figure 5.5 Density Parameter Plan
- Figure 5.6 Movement and Access Parameter
- Figure 5.7 Outline SuDs Parameter Plan
- Figure 5.8 Existing Utilities in the NW Bicester EcoTown Area

#### Chapter 6: Landscape and Visual Amenity

- Figure 6.1 Landscape Content Study Area
- Figure 6.2 Visual Study Area and Viewpoints
- Figure 6.3 Existing Landscape Character Areas

#### Chapter 7: Ecology

- Figure 7.1 Phase 1 Habitat Map

#### Chapter 8: Transport

- Figure 8.1 Transport Study Area
- Figure 8.2 Link Flow Locations
- Figure 8.3 Definitive Map of Public Rights of Way
- Figure 8.4 National Cycle Network
- Figure 8.5 Existing Bus Services
- Figure 8.6 Personal Injury Accident Area Data

#### Chapter 9: Air Quality

- Figure 9.1 Site Plan and Receptor Locations

#### Chapter 10: Noise and Vibration

- Figure 10.1 Noise Survey Monitoring Locations
- Figure 10.2 Baseline Noise Contour Plot- Daytime
- Figure 10.3 Baseline Noise Contour Plot- Night-time
- Figure 10.4 2031 Noise Contour Plot- Daytime
- Figure 10.5 2031 Noise Contour Plot- Night-time
- Figure 10.6 Indicative Noise Levels from Sports Pitches Only

#### Chapter 12: Ground Conditions and Contamination

- Figure 12.1 Site Features Plan

#### Chapter 13: Agriculture and Soils

- Figure 13.1 Agricultural Land Classification, Himley Village

#### Chapter 15: Archaeology (Buried Heritage)

- Figure 15.1 Historic Environment Record Data
- Figure 15.2 Nationally Designated Heritage Assets

#### Chapter 16: Socio Economic and Community

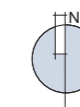
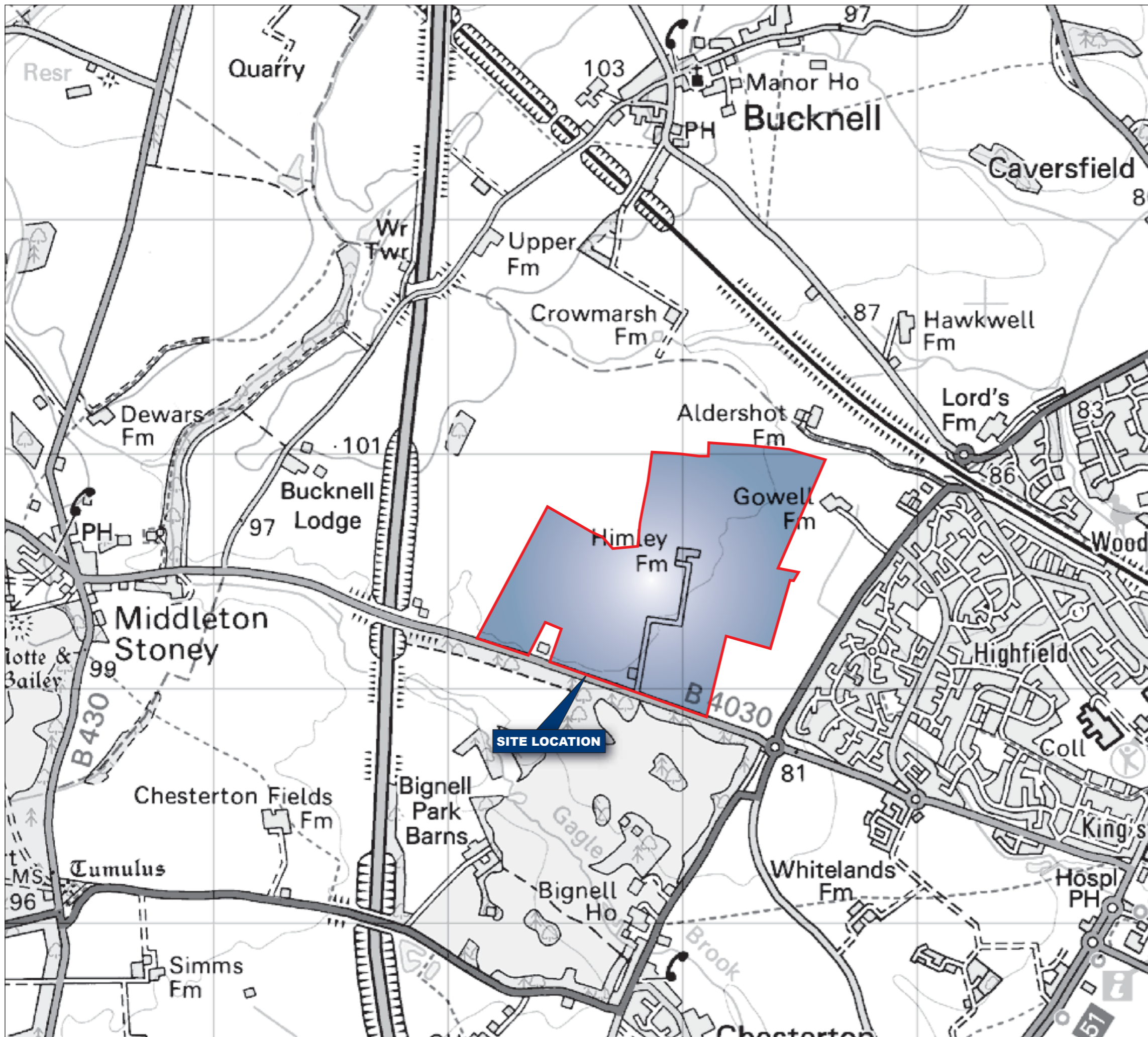
- Figure 16.1 Site Location and Surrounding Wards
- Figure 16.2 Education and Childcare Facilities within Bicester Town and the Immediate Surrounding Area
- Figure 16.3 Significant Open Spaces, Sports Recreation Provision and Community Facilities within Bicester Town and the immediate surrounding area.

#### Chapter 17: Human Health

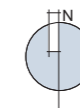
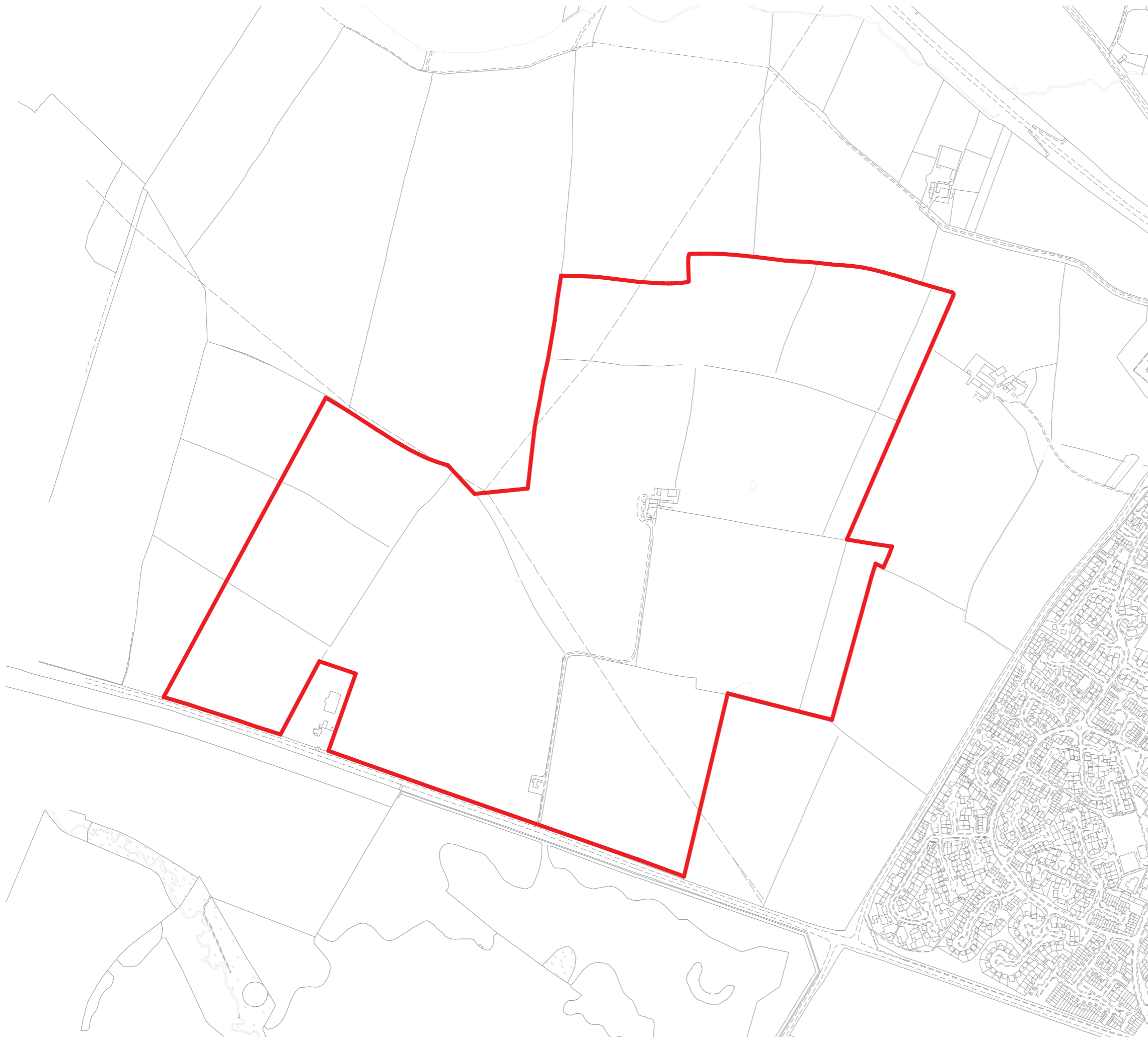
- Figure 17.1 Location of Health Facilities

#### Chapter 19: Cumulative Effects

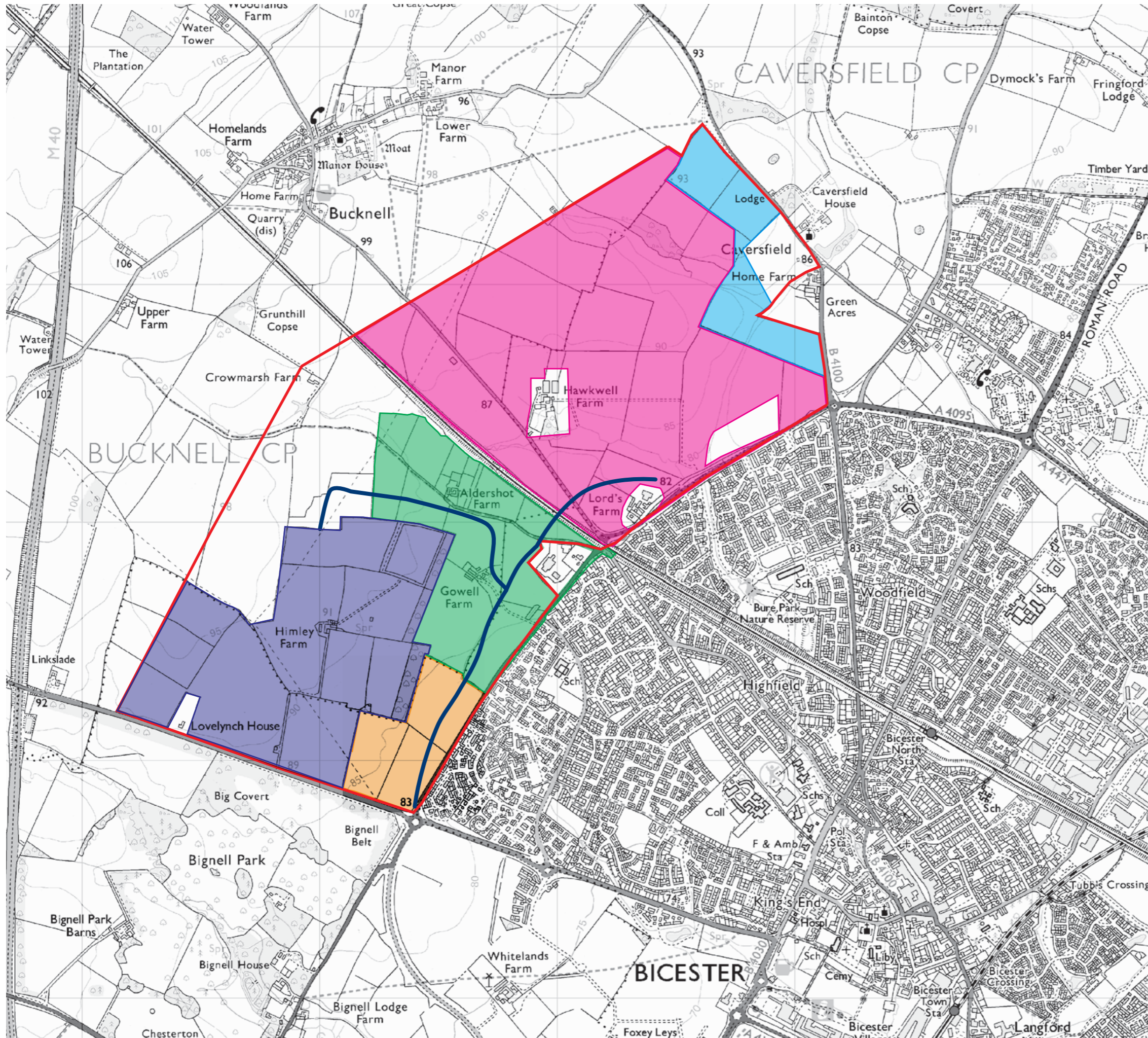
- Figure 19.1 Cumulative Scheme Plan



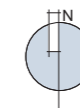
Project Details	EED14995-100: Himley Village
Figure Title	Figure 1.1: Site Location
Figure Ref	EED14995-100_GR_ES_1.1A
Date	2014
File Location	\\nt-incs\weed\projects\eed14995\100\graphics\issued figures



<b>Project Details</b>	EED14995-100: Himley Village
<b>Figure Title</b>	Figure 1.2: Existing Site Plan
<b>Figure Ref</b>	EED14995-100_GR_ES_1.2A
<b>Date</b>	2014
<b>File Location</b>	\\nt-incs\weed\projects\eed14995\100\graphics\es\issued figures

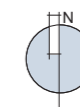


- NW Bicester EcoTown Site (Masterplan)
- Himley Village Location
- Application 1 (North of railway)
- Application 2 (South of railway)
- Exemplar Site
- NW Bicester Business Park
- NW Bicester Link Road

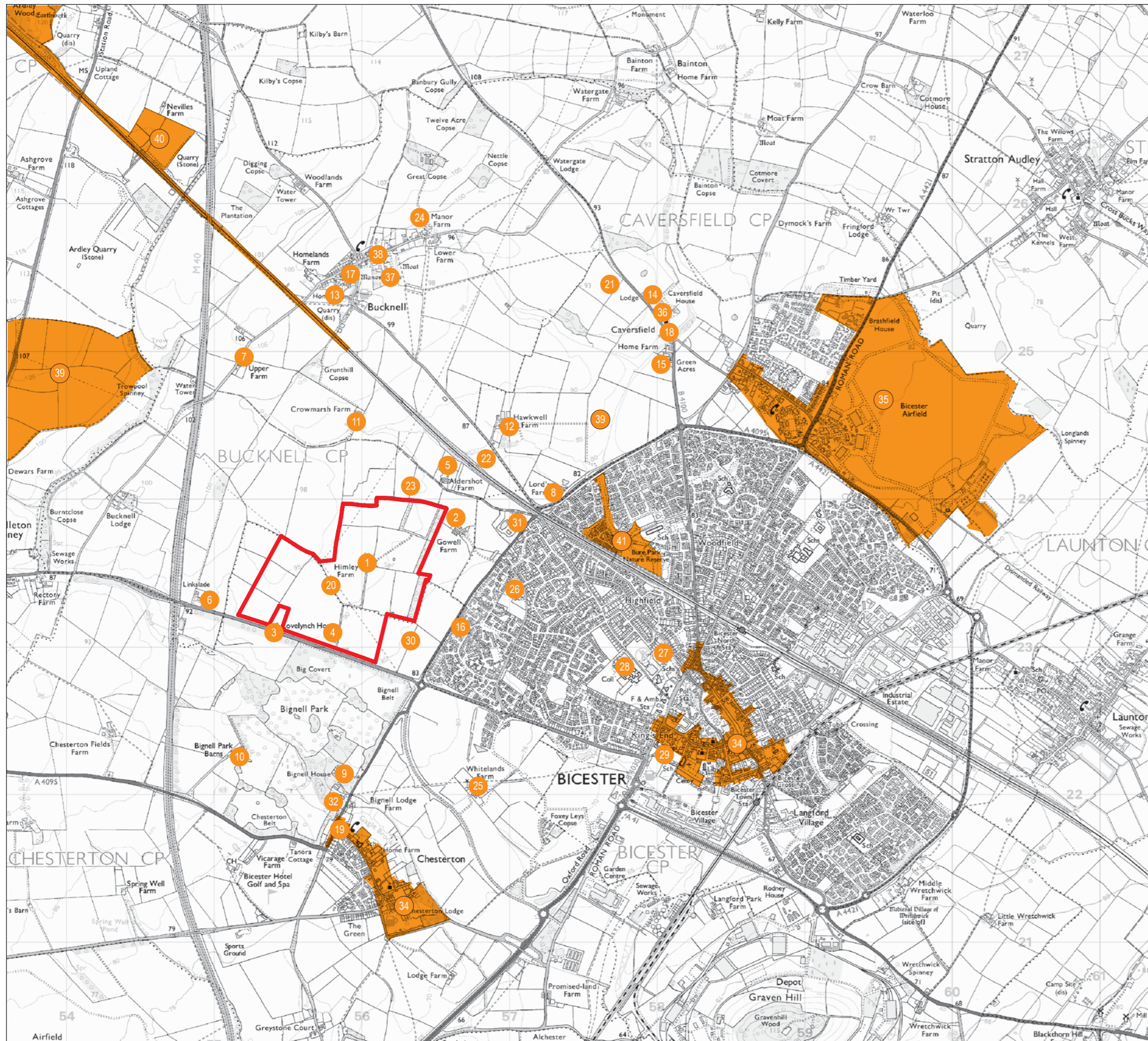


Project Details	EED14995-100: Himley Village
Figure Title	Figure 1.3: NW Bicester Applications
Figure Ref	EED14995-100_GR_ES_1.3A
Date	2014
File Location	\\nt-incs\weed\projects\eed14995\100\graphics\issued figures







Project Details	EED14995-100: Himley Village
Figure Title	Figure 3.1: Aerial Photo
Figure Ref	EED14995-100_GR_ES_3.1A
Date	2014
File Location	\\nt-incs\weed\projects\eed14995\100\graphics\es\issued figures



Sensitive Receptor	Receptor Number
Himley Farm	1
Gowell Farm	2
Lovelych House	3
Himley Farm Bungalow	4
Aldershot Farm	5
Linkslade	6
Upper Farm	7
Lords Farm	8
Bignell House	9
Bignell Park Barns	10
Crowmarsh Farm	11
Hawkwell Farm	12
Bucknell Home Farm	13
Caversfield House	14
Caversfield Home Farm	15
Residents in Bicester to east of A4095	16
Residents in Bucknell	17
Residents in Caversfield	18
Residents in Chesterton	19
Future Residents - Himley Village	20
Future Residents - NW Bicester Exemplar Development	21
Future Residents - NW of Bicester Application 1 (North of Railway)	22
Future Residents - NW of Bicester Application 2 (South of Railway)	23
Bucknell Manor Farm	24
Whitelands Farm	25
Kings Meadow School	26
Brookside Primary School	27
Bicester Community College	28
Bicester Community Hospital	29
Future Occupiers - NW Bicester Business Park	30
Avonbury Business Park	31
Bignell Park Hotel	32
Chesterton Conservation Area	33
Bicester Conservation Area	34
RAF Bicester Conservation Area	35
Church of St Lawrence (Grade II listed)	36
Bucknell Manor House (Grade II listed)	37
St Peter's Bucknell Church yard Cross (Grade II listed)	38
Ardley Cutting and Quarry SSSI	39
Ardley Trackway SSSI	40
Bure Park Local Nature Reserve	41

-  Site Boundary
-  Sensitive Receptors

Project Details	EED14995-100: Himley Village
Figure Title	Figure 3.2: Sensitive Receptors
Figure Ref	EED14995-100_GR_ES_3.2A
Date	2014
File Location	\\nt-incs\weed\projects\eed14995\100\graphics\issued figures