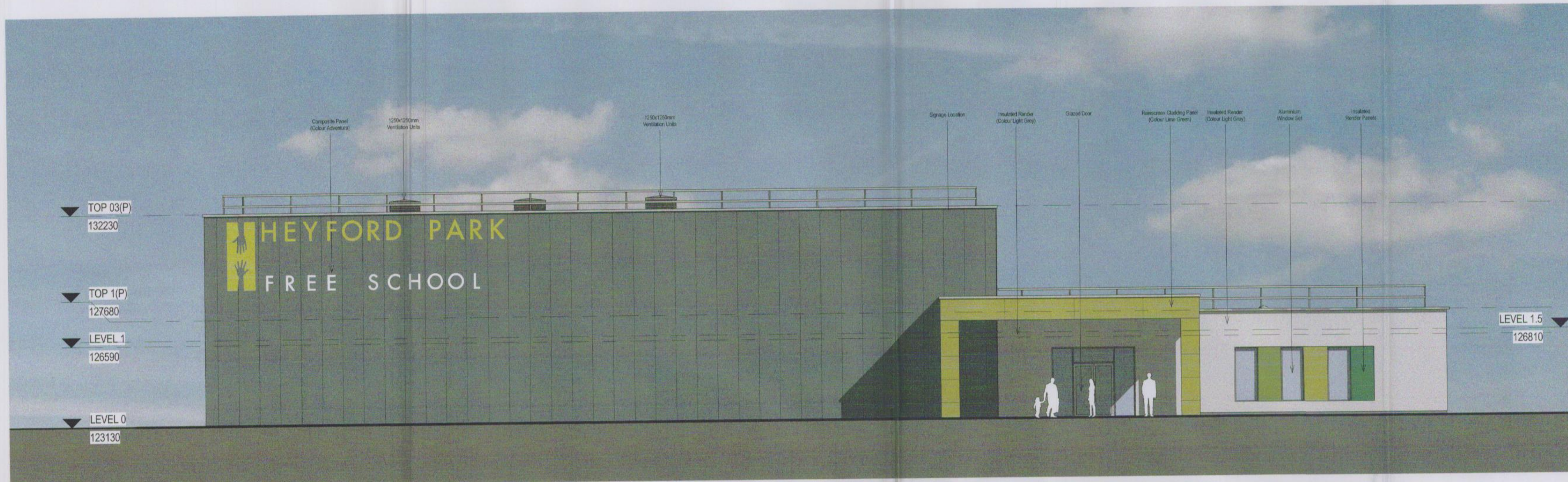
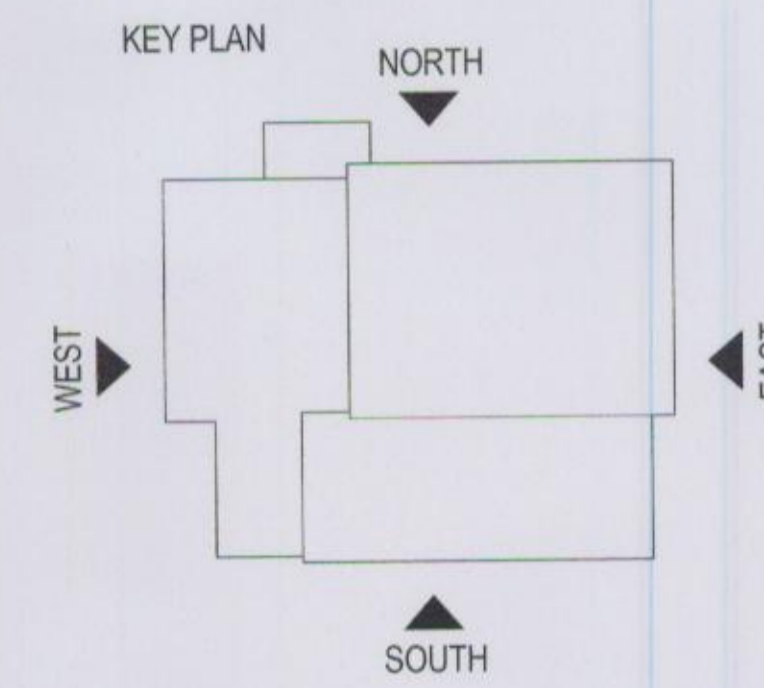


- ALL CLADDING IS BASED UPON THE MANUFACTURERS STANDARD COLOURS

- ARCHITECTURAL WALL PANELS (HOT DIP ZINC/ ALUMINIUM COATED STEEL)

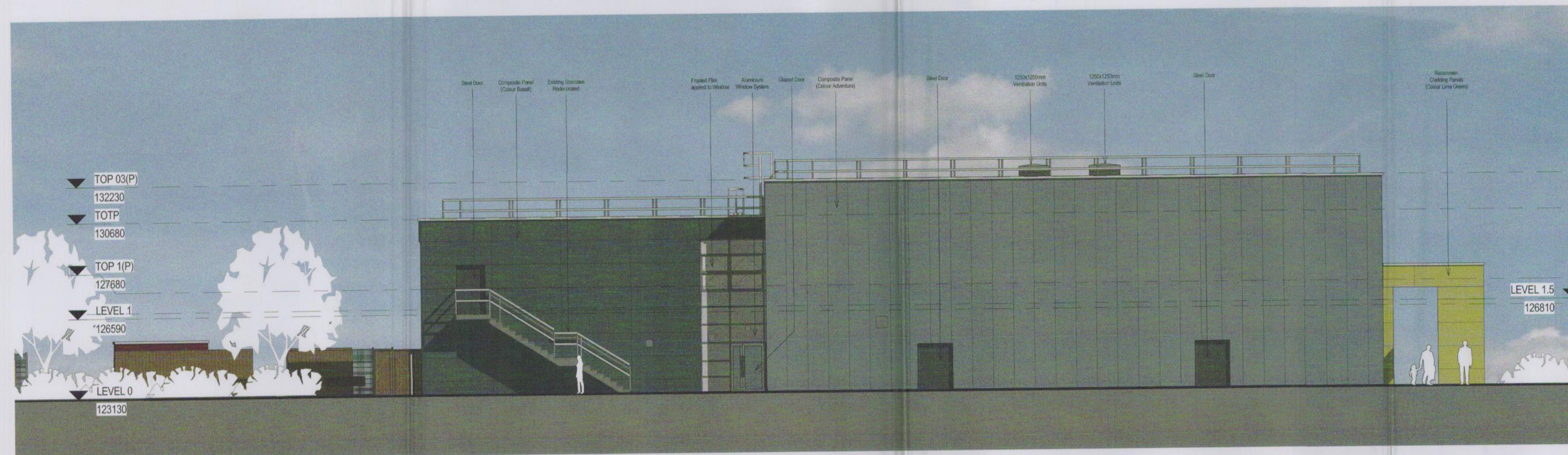


1 L-SH-2150 - North Elevation  
1 : 100

PRELIMINARY CONSTRUCTION

Revision	Date	Revision Description	Issued By
A	25.10.13	Changes made inline with Rier comments	TW
B	25.03.14	General revisions per Rier comments received 03.03.14	TW
C	02.07.14	Planning issue	TW
D	13.08.14	Minor revision to annotations	TW

A/00074/NMA  
Rec'd 20.08.14



2 L-SH-2150 - East Elevation  
1 : 100

Job Title  
Heyford Park Free School  
Sports Centre

Drawing Title  
Elevations North and East

Check all dimensions and verify on site. Report any errors or omissions

First Issued	23.09.13
Drawing Sheet Size	A1
Scale	As indicated
Project Partner	NW
Project Architect	TW
Job Code	HFSK
Drawing Number	L-SH-2150
Revision	D

