
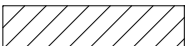


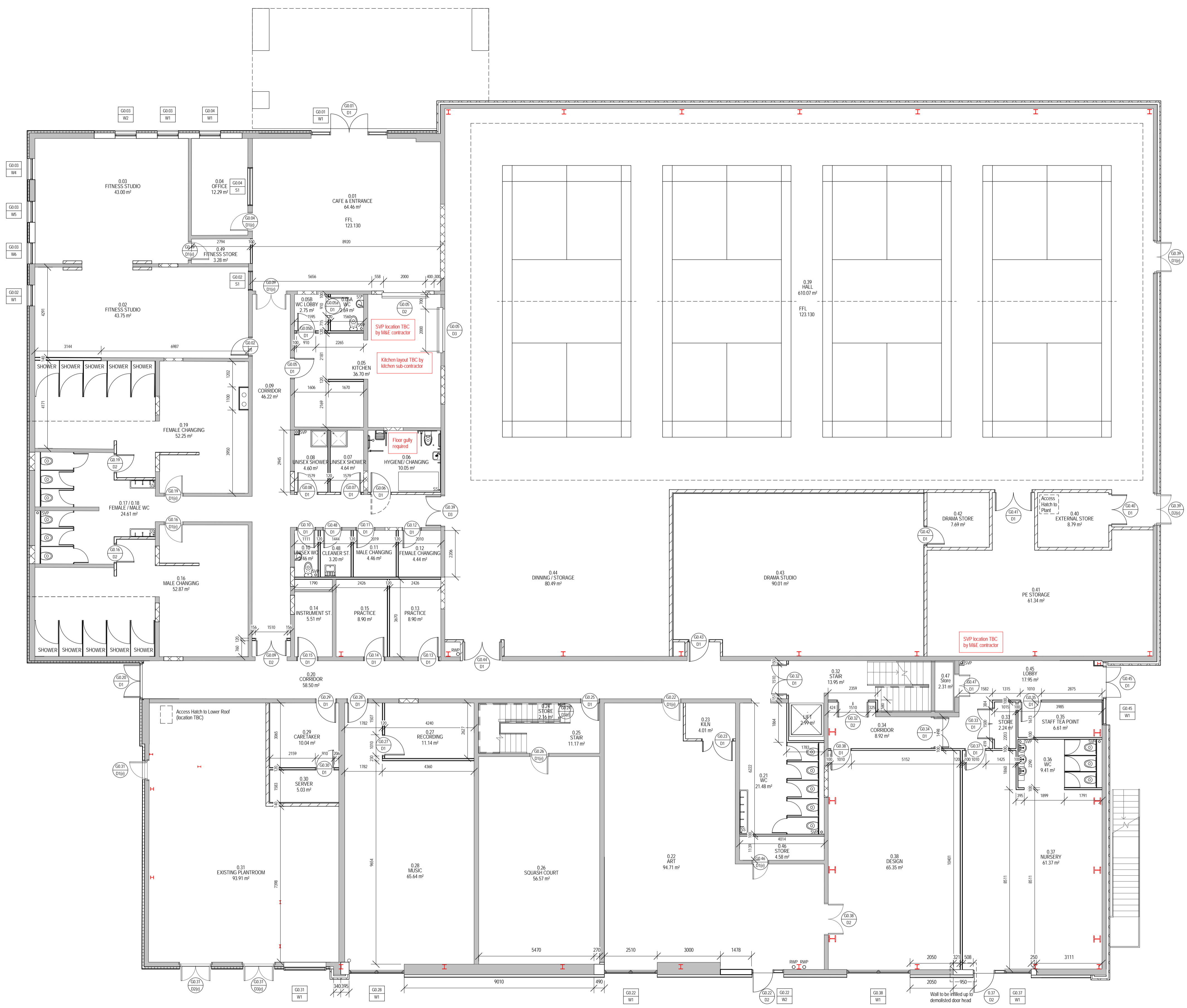


**NOTES**

**KEY**

-  Proposed new walls
-  Proposed new walls (Blockwork)
-  Existing walls
-  Infill walls



**PLANNING**

**Revisions**

Revision	Date	Revision Description	Issued By
A	14.09.13	Minor revisions to plan and room numbers, added changing room layout	TW
B	24.09.13	Revised wall location, relocated store 0.13, revised door position in practice room 0.13, added kitchen layout	TW
C	27.09.13	Door tags added	TW
D	15.10.13	Revised door tag, changing room staff WC layout, clarify infill wall location, updated WC to show partition walls, screen added to office	TW
E	17.10.13	Added glass screen to Fitness Studio 0.02, added Fitness Store 0.49	TW
F	23.10.13	Added window tags	TW
G	17.03.14	General revisions per Kier comments received 03.03.17	TW
H	20.03.14	General revisions per Kier comments received 03.03.17, 20.03.17	TW
I	08.05.14	Existing wall retained in kitchen	TW
K	13.06.14	Added setting out dimensions to plan	TW
L	18.06.14	Revised added wall types, revised setting out dims	TW
M	23.06.14	Revised window numbers	TW
N	02.07.14	Planning issue	TW

Job Title  
**Heyford Park Free School Sports Centre**

Drawing Title  
**Proposed Ground Floor Plan**

Check all dimensions and verify on site. Report any errors or omissions

First Issued **13.09.13**  
 Drawing Sheet Size **A1**  
 Scale **1:100**  
 Project Partner **NW**  
 Project Architect **TW**  
 Job Code **HFSK**  
 Drawing Number **L-SH-2006**  
 Revision **N**



This line should measure 100mm along x and y axis when printed