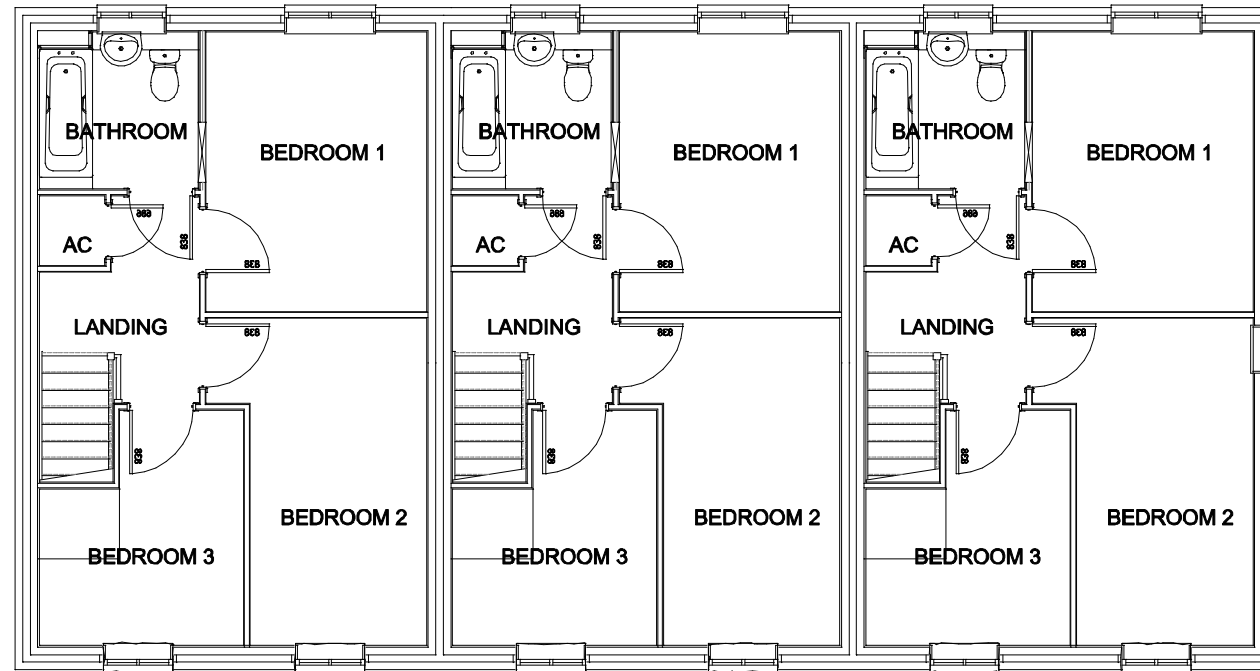


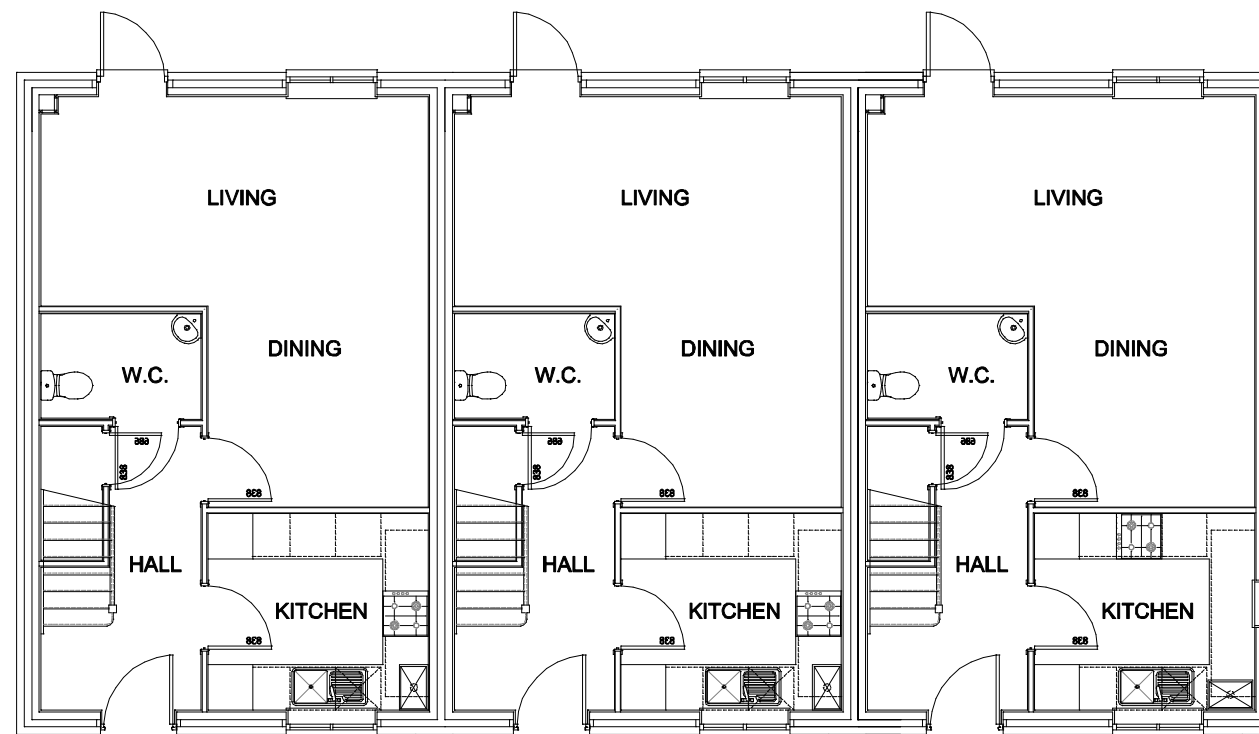
NOTES:
 1. Scaled dimensions must not be taken from this drawing.
 2. This drawing must be read in conjunction with all relevant drawings, documents and information prepared by the Architects, other Consultants and Specialists.
 3. Any discrepancy on this drawing must be referred to the Architects and clarification obtained before any action by others and prior to commencement of works.
 4. All dimensions must be checked on site before any action by others and prior to commencement of work or the preparation of Specialists drawings.
 5. The copyright of this drawing remains with the Architect.
 6. If in doubt ask!

REVISIONS

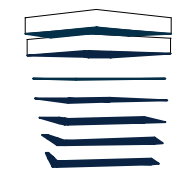
--	--



FIRST FLOOR

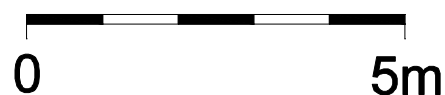


GROUND FLOOR



ERIC COLE ARCHITECTURE

Eric Cole Ltd. 15 The Woolmarket, Cirencester, Gloucestershire GL7 2PR
 T: +44 (0)1285 641234 E: mail@ericcole.co.uk W: www.ericcole.co.uk



AS - 208-209-210
 Ha -

PERSIMMON
 PERSIMMON HOMES (Midlands) LTD
 3 Waterside Way
 Bedford Road
 Northampton NN4 7XD
 Tel: 01604 884681 Fax: 01604 884686



PROJECT:	KMC & KMD KINGSMERE, BICESTER		
DWG TITLE:	AFFORDABLE - PLOTS 208-209-210 PLANS		
SCALE:	1:100@A3	DRAWN:	MA
DWG NO:	13.065.AFF.UV.05	REV:	D
		CHECKED:	
		DATE:	14.05.14