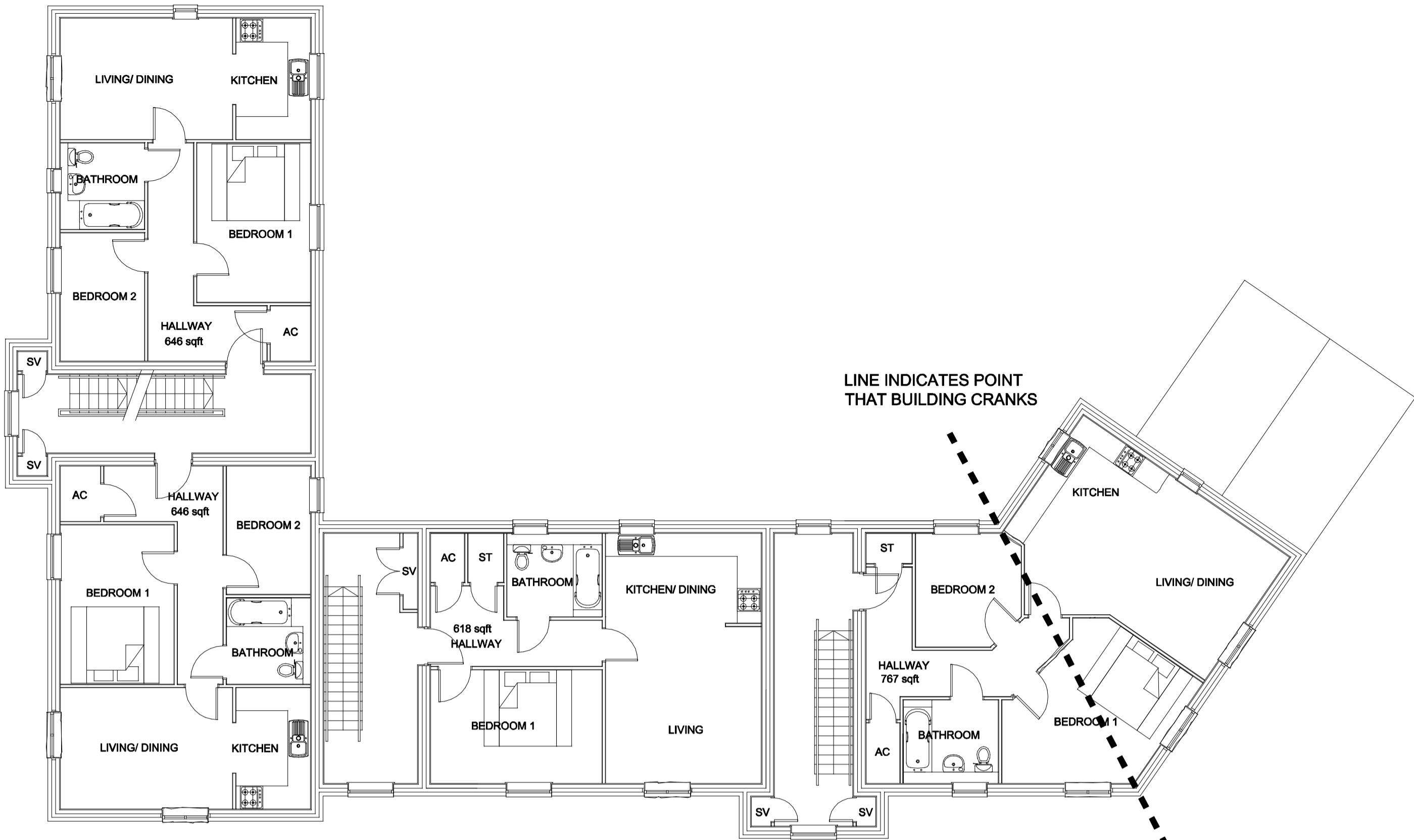


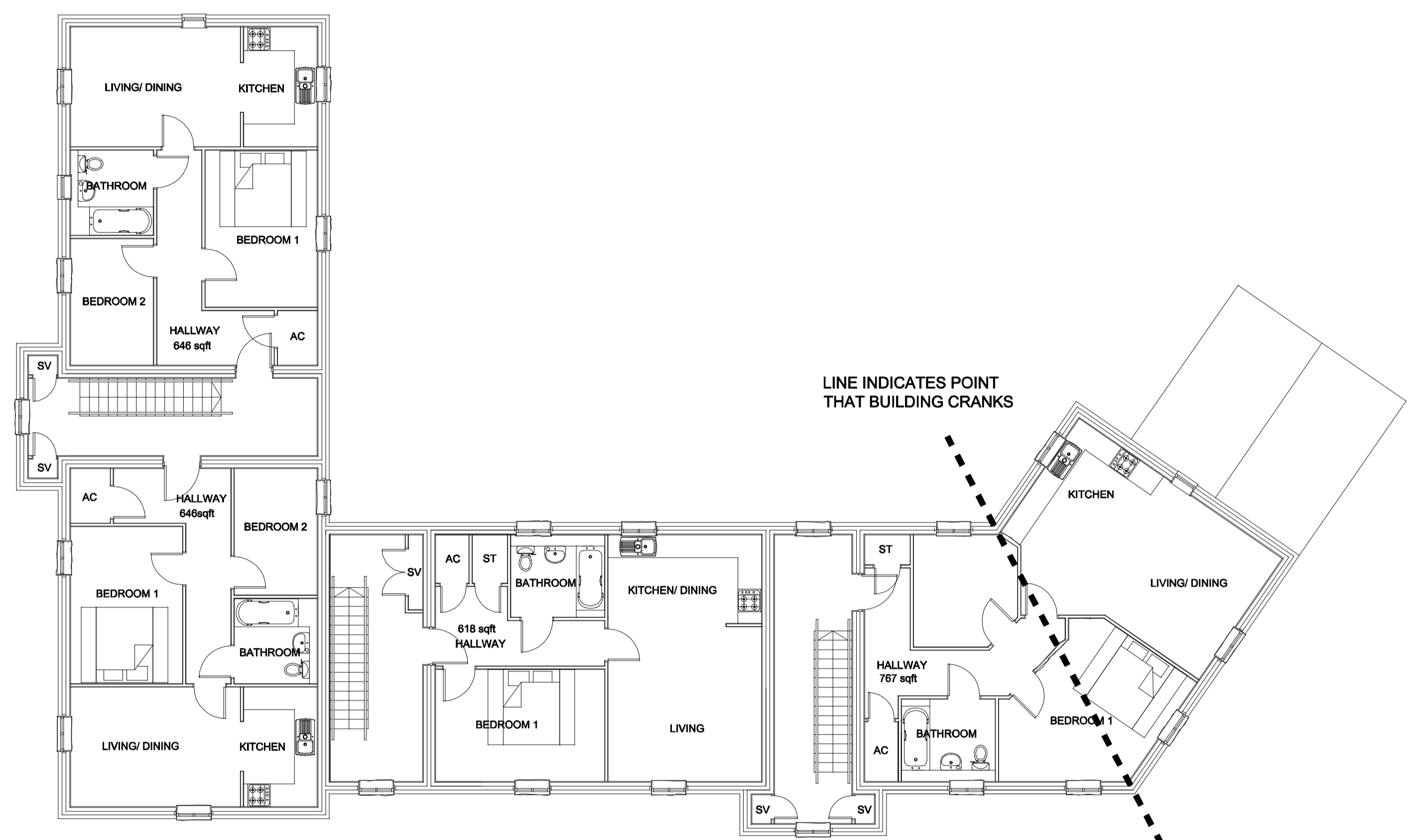
NOTES:  
 1. Stated dimensions must not be taken from this drawing.  
 2. This drawing must be read in conjunction with all relevant drawings, documents and information prepared by the Architects, other Consultants and Specialists.  
 3. Any discrepancy on this drawing must be referred to the architects and clarification obtained before any action by others and prior to commencement of work.  
 4. All dimensions must be checked on site before any action by others and prior to commencement of work or the preparation of Specialist drawings.  
 5. The copyright of this drawing remains with the Architect.  
 6. If in doubt ask.

REVISIONS

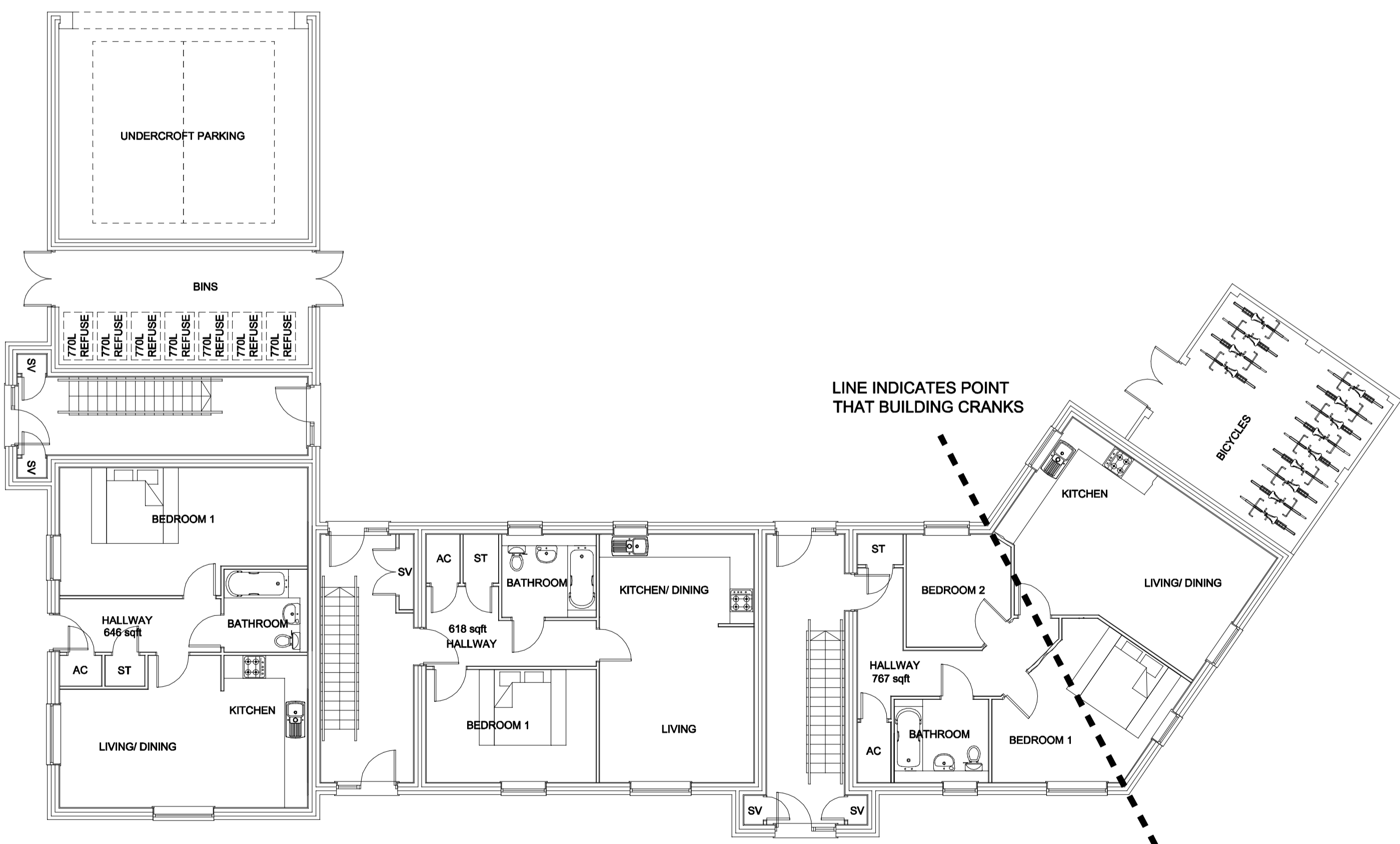
--	--	--



FIRST FLOOR PLAN



SECOND FLOOR PLAN

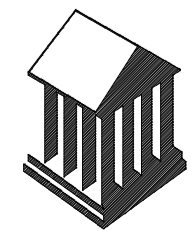
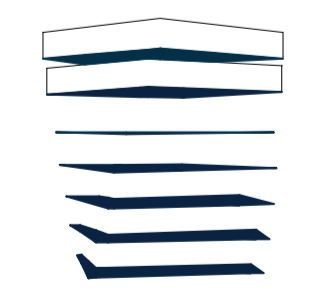


GROUND FLOOR PLAN



FOR MATERIALS PLEASE  
 SEE RELEVANT DRAWINGS  
 ROOF MATERIALS : 13.O65.101  
 WALL MATERIALS : 13.O65.102

**PERSIMMON**  
 PERSIMMON HOMES (Thames Valley) LTD  
 Persimmon House  
 Vanwall Business Park 2 Vanwall Road  
 Maidenhead SL6 4UB  
 Tel: 01628 502800 Fax: 01628 502801

ERIC COLE ARCHITECTURE

Eric Cole Ltd. 15 The Woolmarket, Cirencester, Gloucestershire GL7 2PR  
 T: +44 (0)1295 641234 E: mail@ericcole.co.uk W: www.ericcole.co.uk

PROJECT:	KMC 8 KMD KINGSMERE, BICESTER		
DWG TITLE:	FLAT PLANS PLOTS 194-204		
SCALE:	1:100@A1	DRAWN:	BT
DWG NO:	13.O65.UV.FLO1	REV:	D
		CHECKED:	
		DATE:	NOV 2013