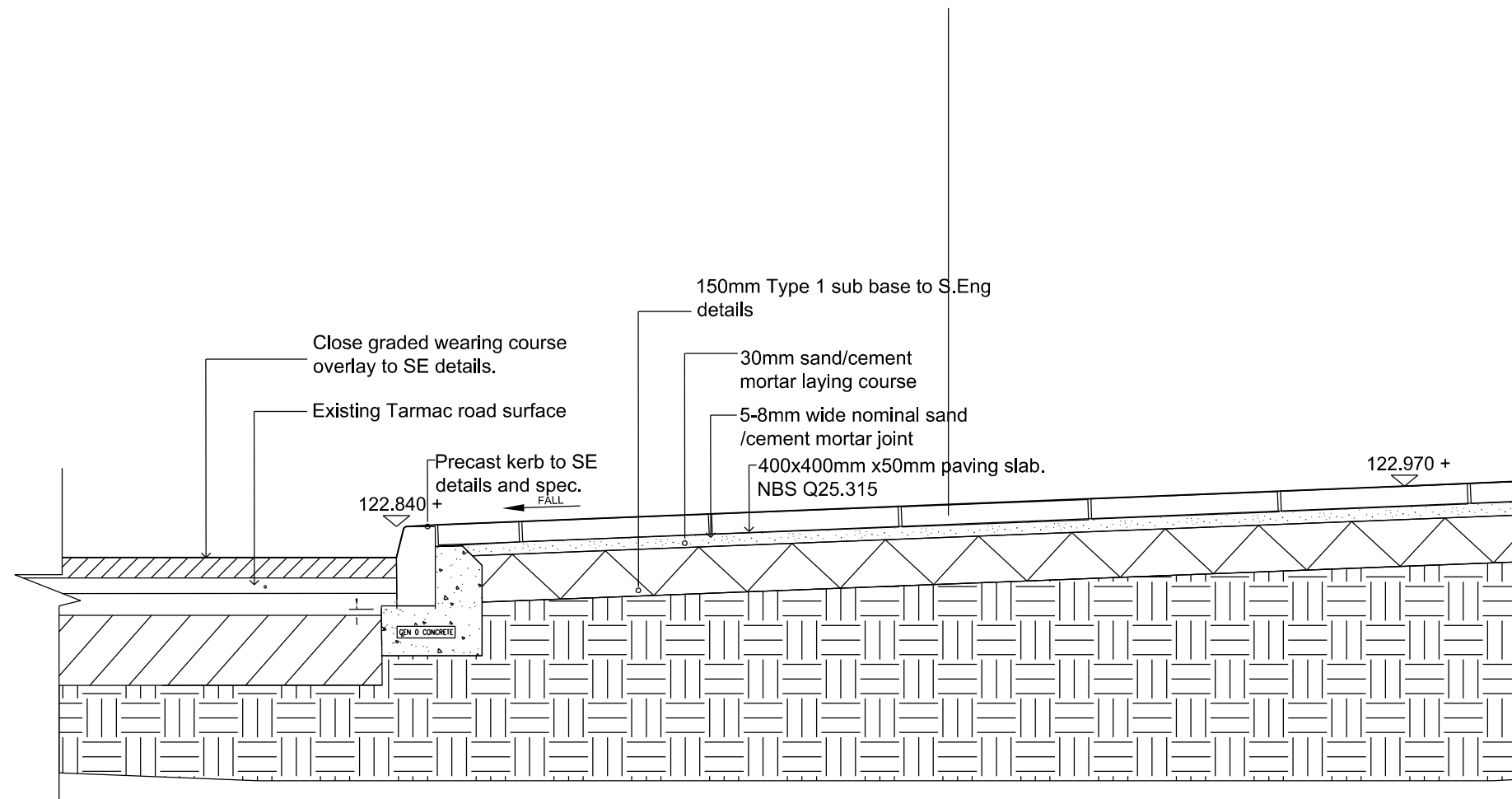
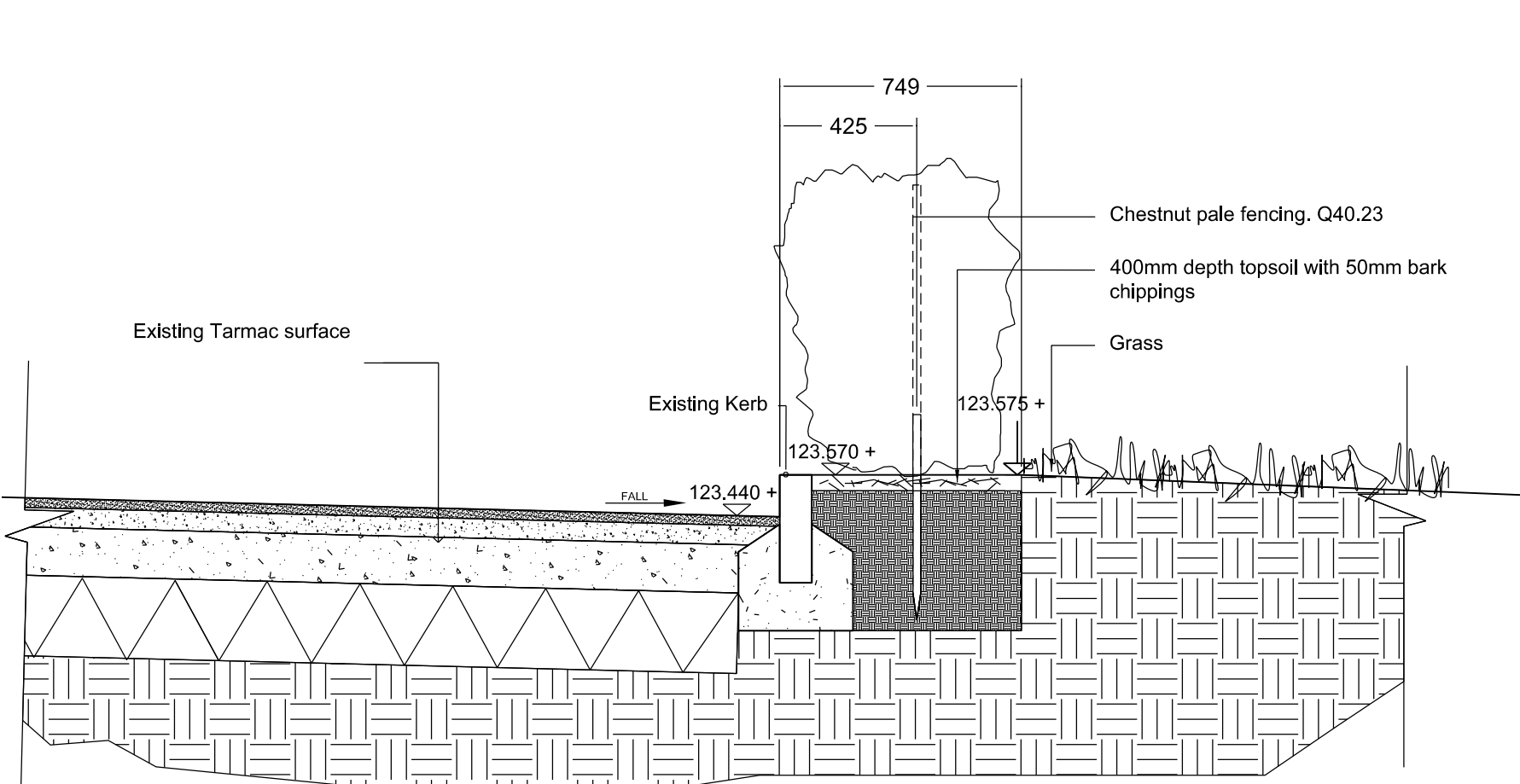


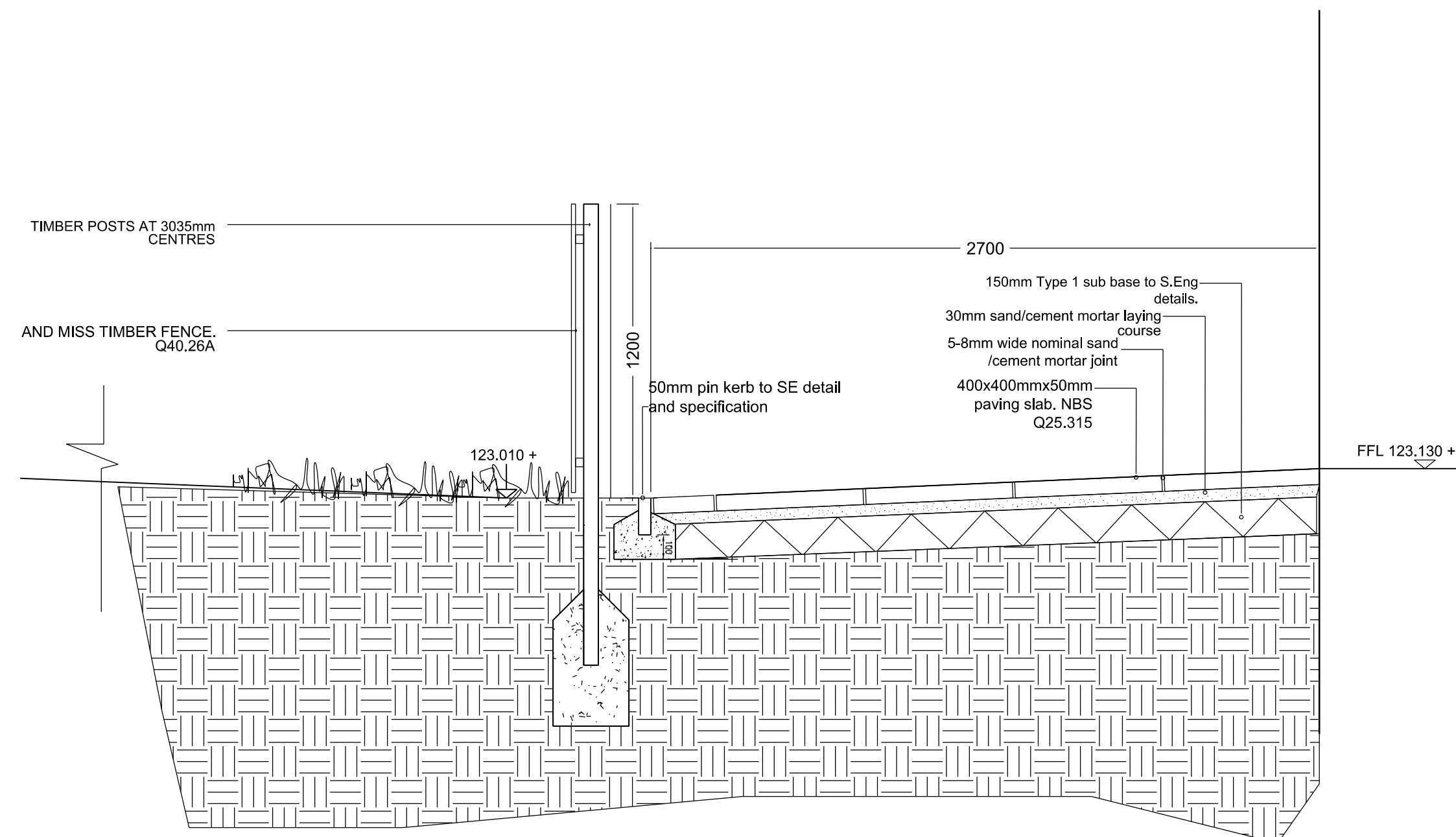
Detail CC  
Paving slab / Grass bank detail



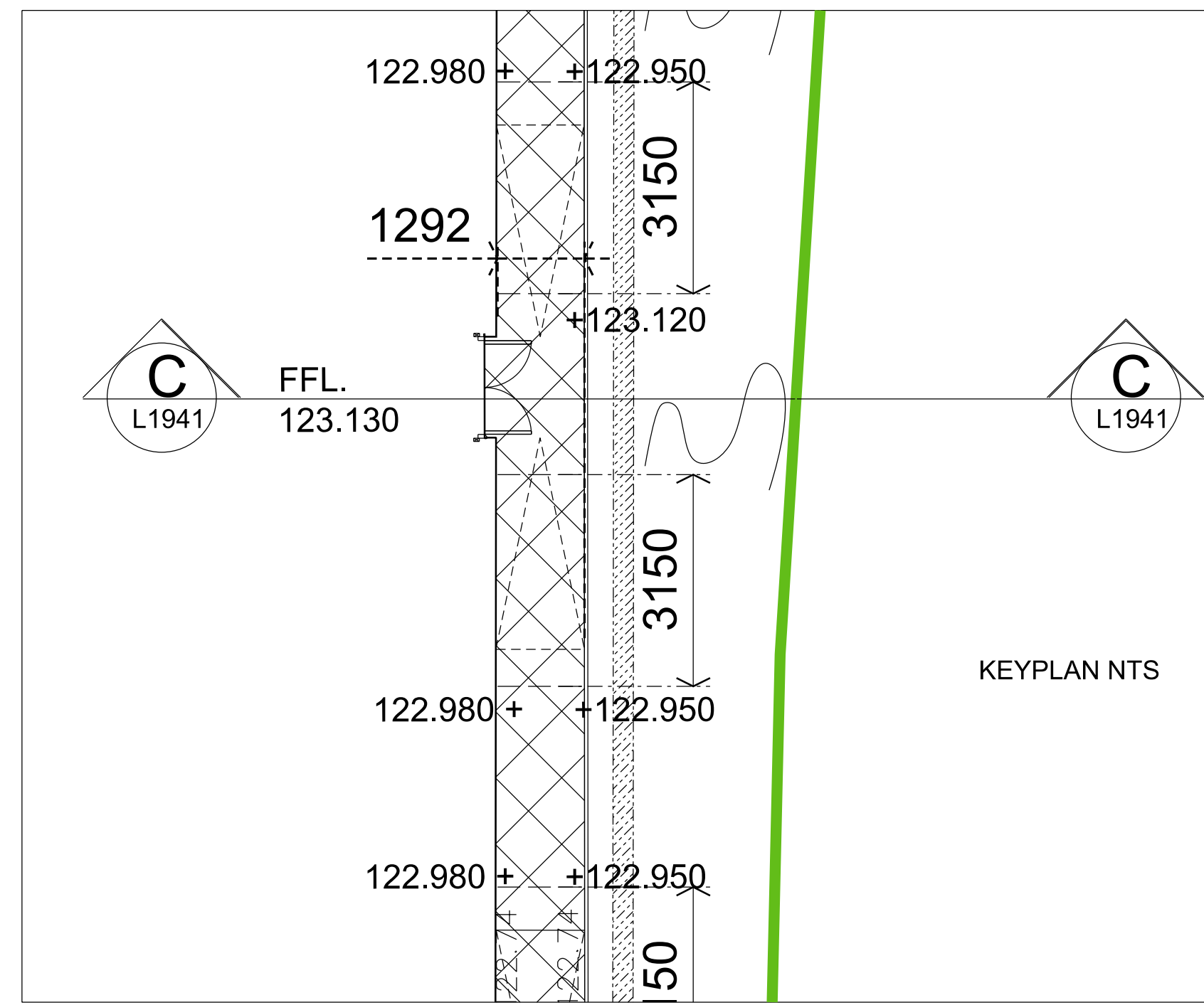
Detail DD  
Tarmac/Kerb/Paving Slab



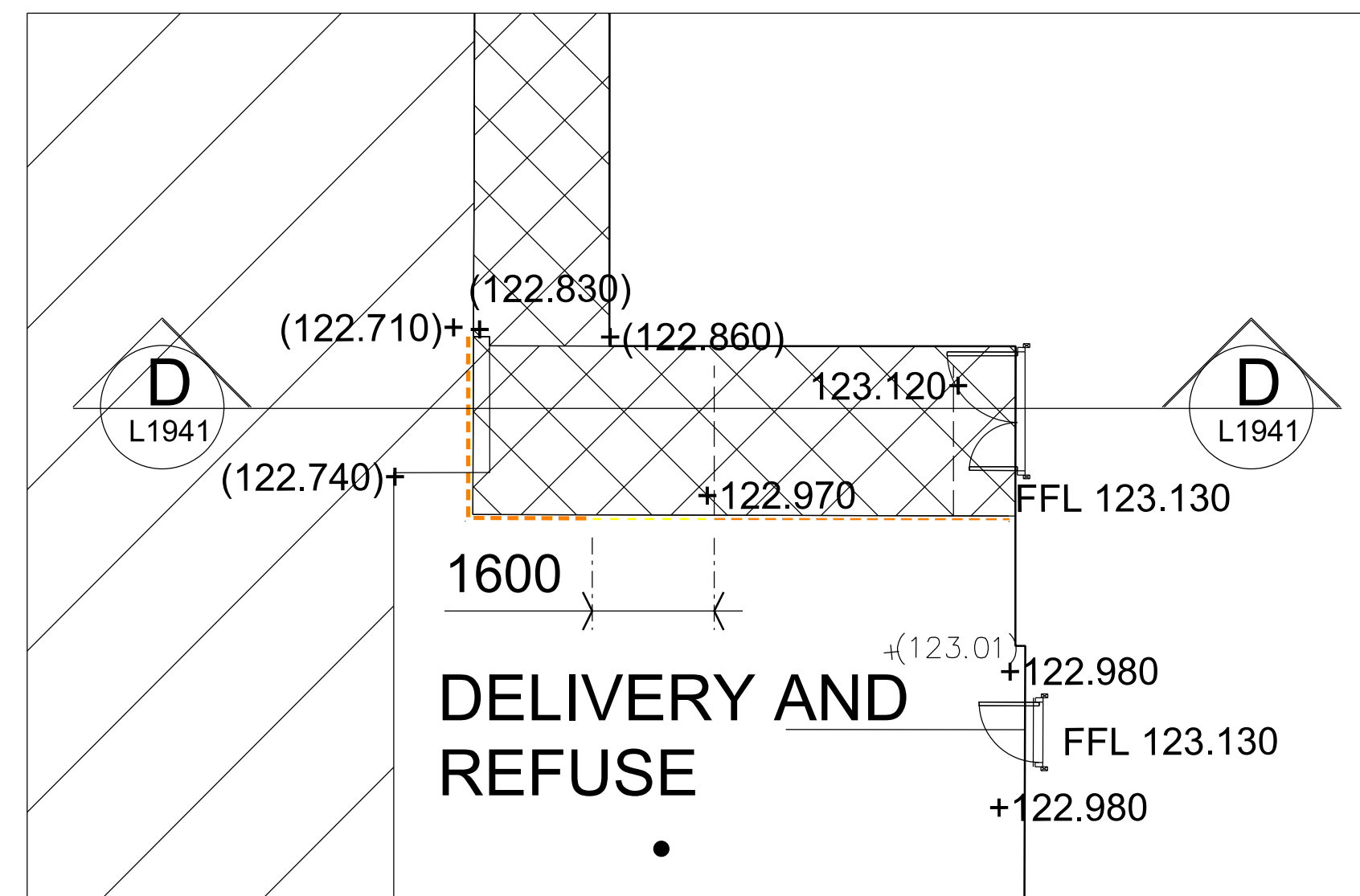
Detail EE  
Tarmac / Hedge / Grass bank detail



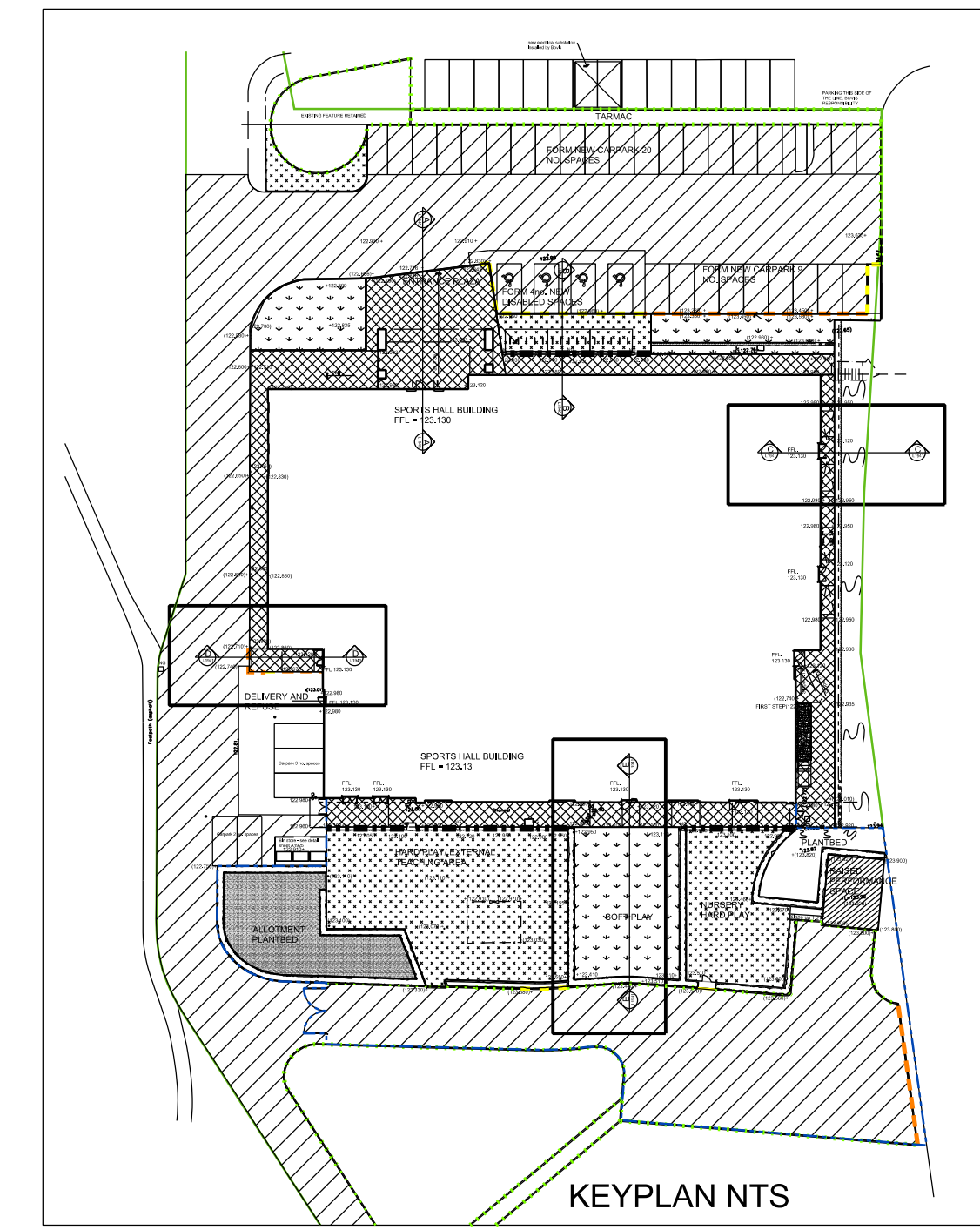
Detail EE  
Paving slab / Grass bank detail



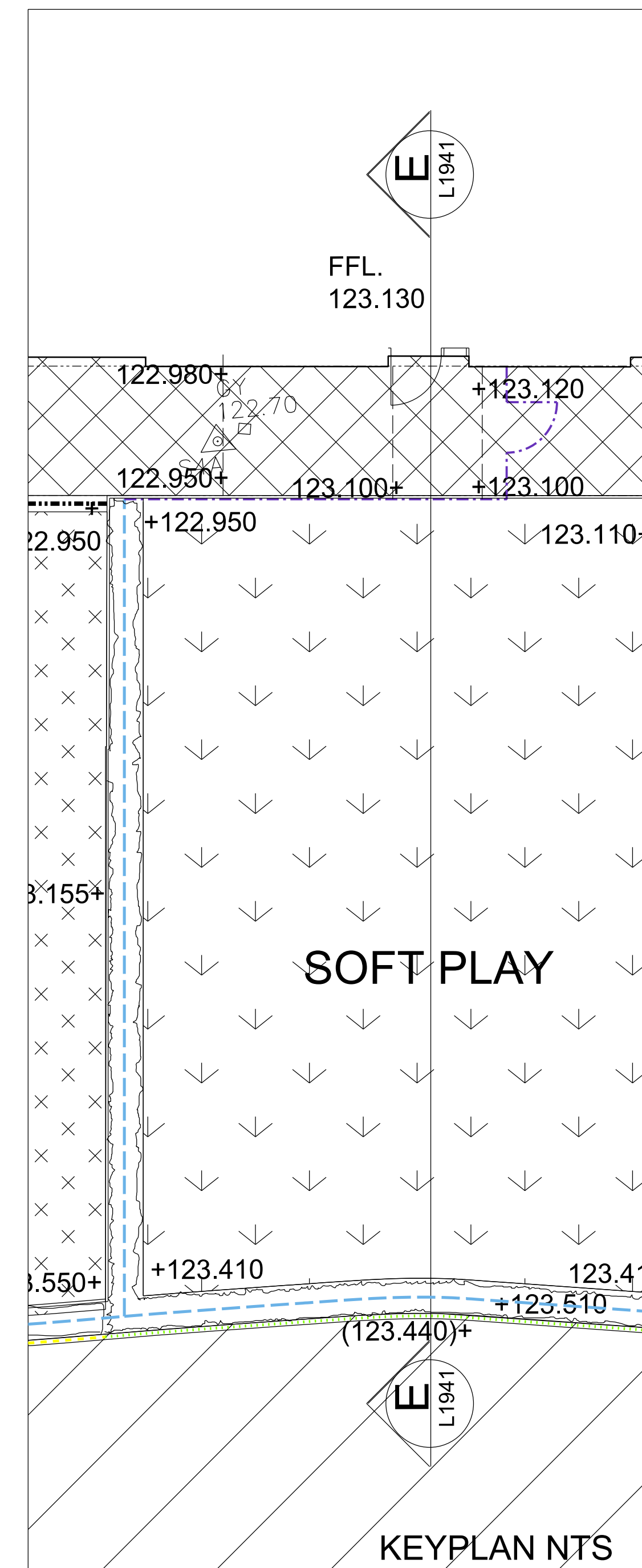
KEYPLAN NTS



DELIVERY AND REFUSE



KEYPLAN NTS



KEYPLAN NTS

LEGEND

- Standard Pin Kerb Q10.110
- Standard Concrete Kerb Q10.111
- Existing Concrete Kerb to be Retained
- Drop Kerb Q10.111
- 1800mm/1200mm High timber hit and miss fencing Q40.26/26A
- 1800mm High weld mesh fence to form secure line Q40.27B
- Chestnut Pale Fencing Q40.23
- Boundary Line (No Fence)
- Dished channel
- New Gully
- Land Drain
- Tarmacadam, standard vehicular to be retained.
- Tarmacadam, standard vehicular Q22.10
- Proposed Pedestrian Tarmacadam Q22.15
- Paving Slabs Q25.315
- Grass
- Gravel
- Soil
- Existing level
- Proposed levels tok. = top of kerb tow. = top of wall
- Proposed coordinates

Revisions

Revision	Date	Revision notes	Drawn	Checked
A	12.05.14	Levels amended to north elevation	SN	IJ
B	29.07.14	General Updates and dimensions added	SN	IJ
C	15.08.14	Details Co ordinated with engineers details	CH	JN

PRELIMINARY CONSTRUCTION

Heyford Park Free School Sports Hall

Proposed Landscape Details

Check all dimensions and verify on site. Report any errors or omissions

First issued: 30.04.14  
 Drawn by: SN  
 Drawing sheet size: A1  
 Scale: 1:20  
 Inspected by: JN  
 Job code: HFSK-SH  
 Drawing number prefix: L  
 Drawing number: 1941  
 Revision: C



33a Victoria Street  
 Birmingham  
 B1 3ND  
 T +44(0)121 234 6440  
 F +44(0)121 234 6450  
 bhama@adp-architects.co.uk  
 www.adp-architects.co.uk

This file should measure 100mm along x and y axes when printed