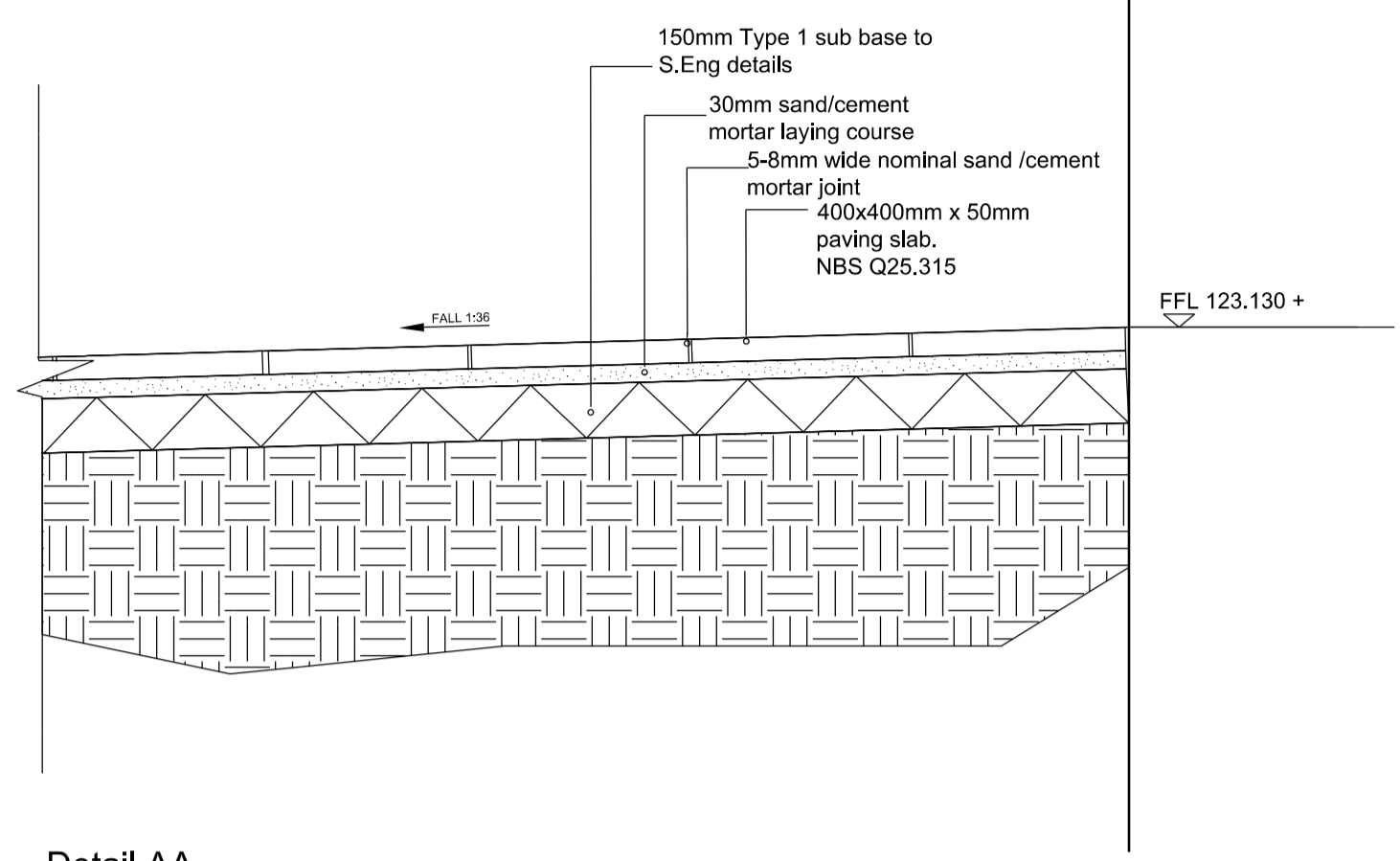
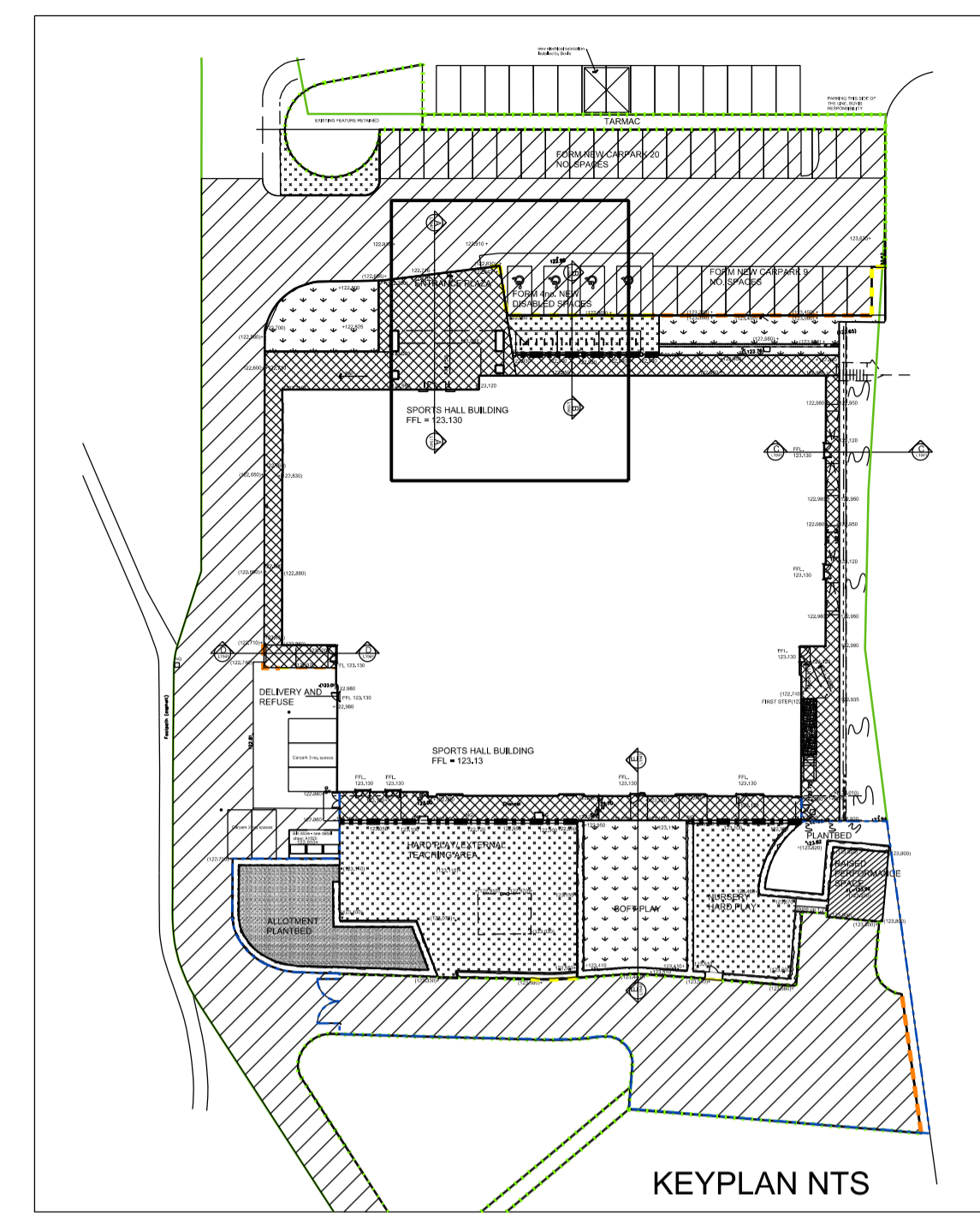


Detail AA  
Tarmac/Kerb/Paving Slab



Detail AA  
Paving slab ramp detail

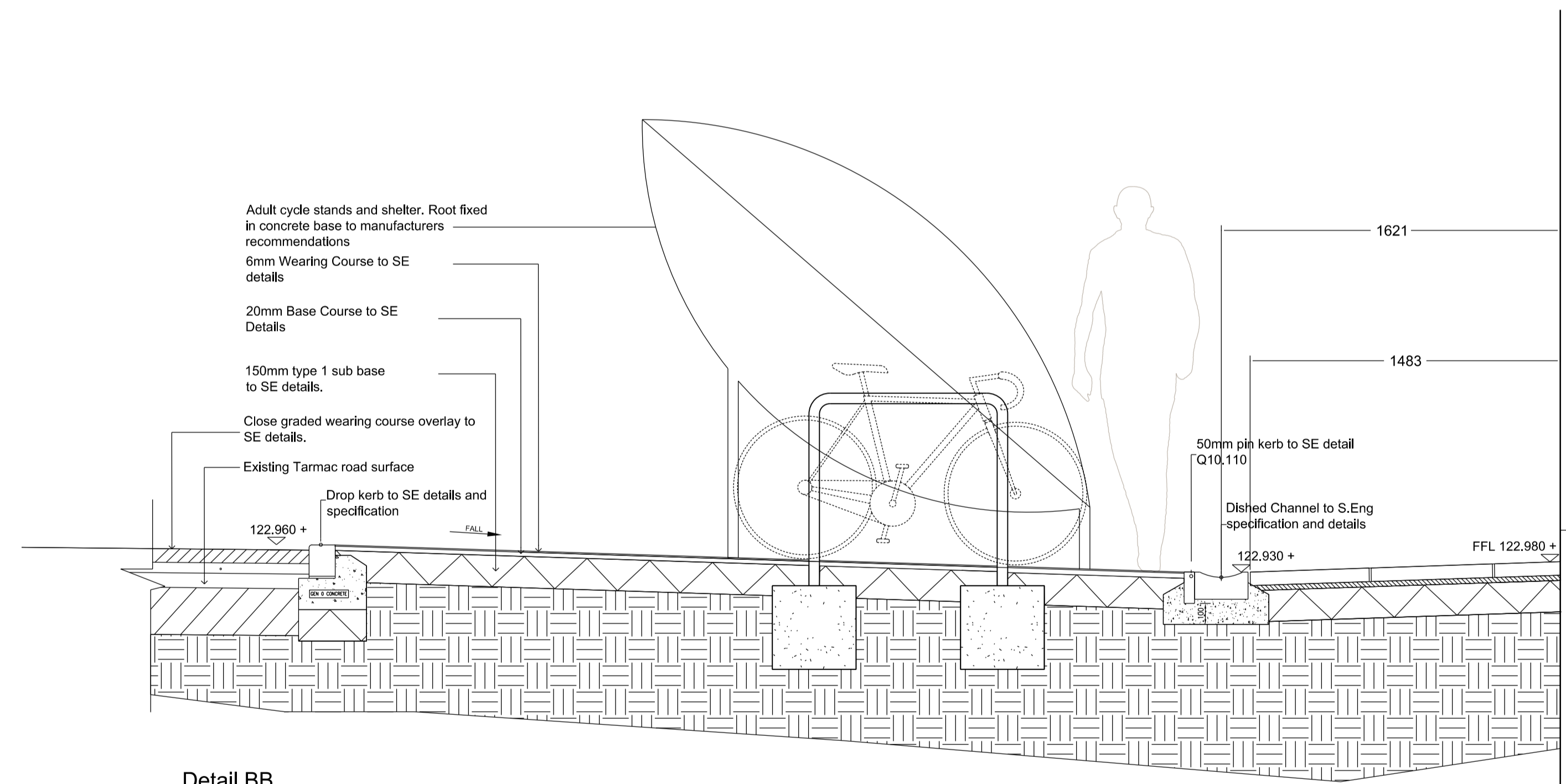


KEYPLAN NTS

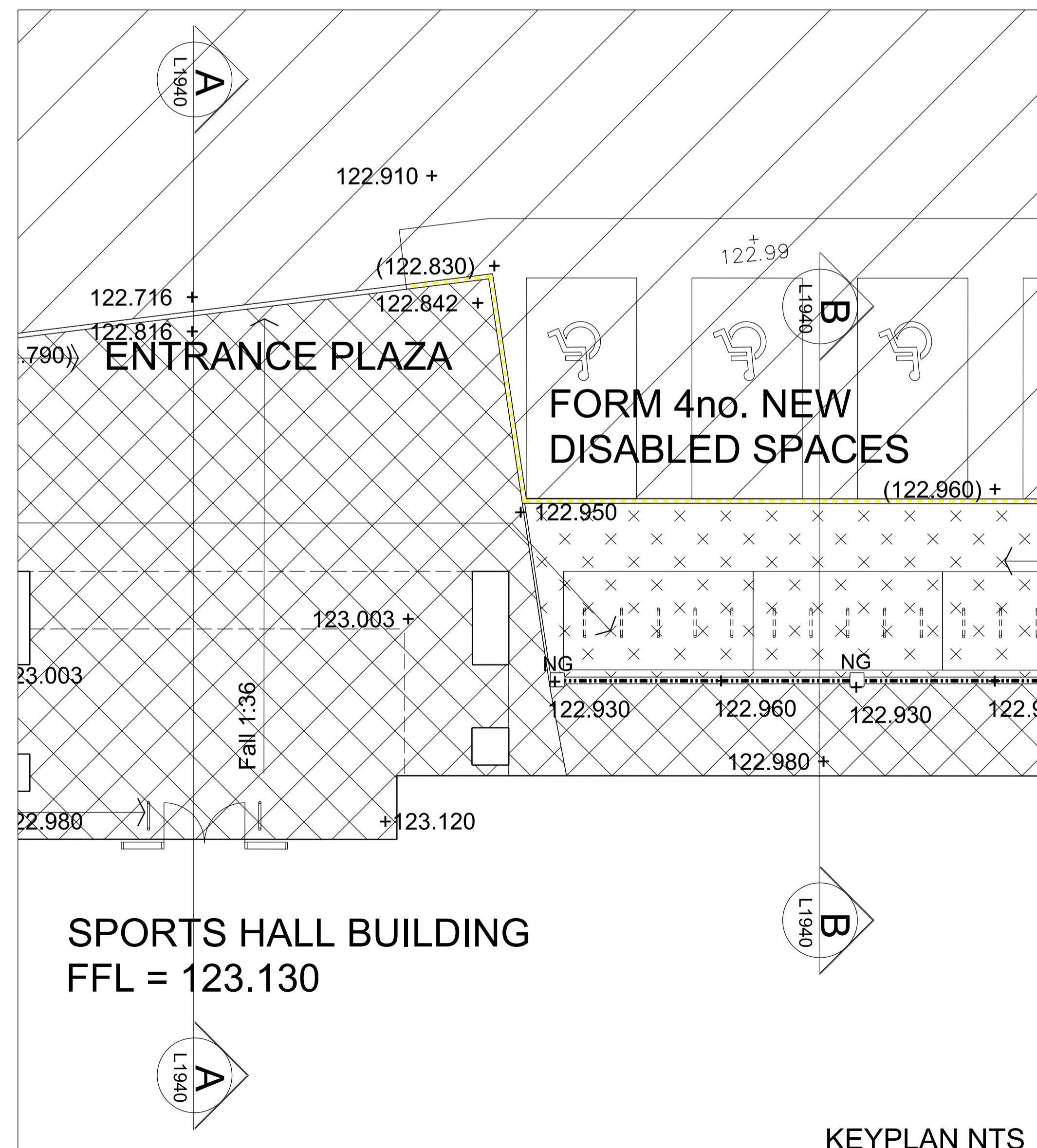
- LEGEND**
- Standard Pin Kerb Q10.110
  - Standard Concrete Kerb Q10.111
  - Existing Concrete Kerb to be Retained
  - Drop Kerb Q10.111
  - 1800mm/1200mm High timber hit and miss fencing Q40.26/26A
  - 1800mm High weld mesh fence to form secure line Q40.27B
  - Chestnut Pale Fencing Q40.23
  - Boundary Line (No Fence)
  - Dished channel New Gully
  - Land Drain
  - Tarmacadam, standard vehicular to be retained.
  - Tarmacadam, standard vehicular Q22.10
  - Proposed Pedestrian Tarmacadam Q22.15
  - Paving Slabs Q25.315
  - Grass Existing level
  - Gravel Proposed levels tok. = top of kerb tow. = top of wall
  - Soil Proposed coordinates

Revisions

Revision	Date	Revision notes	Drawn	Checked
A	12.05.14	Levels amended to north elevation	SN	IJ
B	29.07.14	General Updates and dimensions added	CH	JN
C	15.08.14	Details co ordinated with engineers details	CH	JN



Detail BB  
Tarmac/Kerb/Tarmac/Bike stands/Paving slab



KEYPLAN NTS

**PRELIMINARY CONSTRUCTION**

Job title  
Heyford Park Free School Sports Hall

Drawing title  
Proposed Landscape Details

Check all dimensions and verify on site. Report any errors or omissions

First issued	30.04.14
Drawn by	SN
Drawing sheet size	A1
Scale	1:20
Inspected by	JN
Job code	HFSK-SH
Drawing number prefix	L
Drawing number	1940
Revision	C

33a Victoria Street  
Birmingham  
B1 3ND  
T +44(0)121 234 6440  
F +44(0)121 234 6450  
bham@adp-architects.co.uk  
www.adp-architects.co.uk

This line should measure 100mm along x and y axes when printed