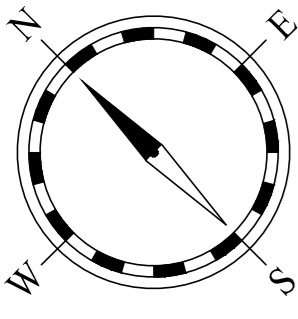
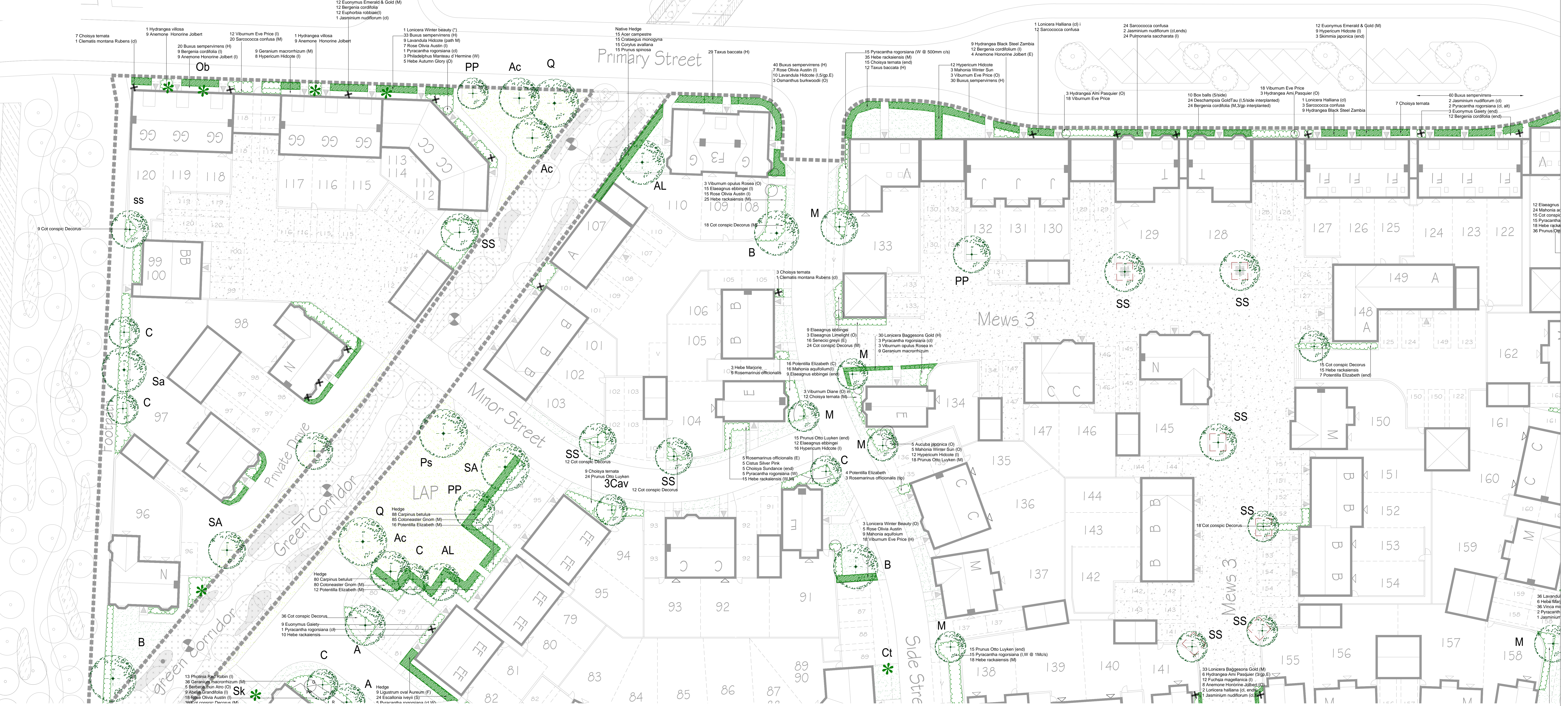


PARCELS KMA & KMB, KINGSMERE, BICESTER



AO
1:200
0 5m 10m 15m 20m 25m 30m 35m 40m 45m



KEY

- PROPOSED TREE PLANTING (circle with cross)
- EXISTING TREES (circle with dot)
- PROPOSED SHRUB PLANTING (circle with star)
- PROPOSED SPECIMEN SHRUB PLANTING (circle with square)
- PROPOSED HEDGE (rectangle with border)
- TURF - FRONT GARDENS, CLOSE MOWN.
- GRASS WILDFLOWER SEED MIX - REAR GARDENS AND COMMUNAL AREAS, CLOSE MOWN.
- TREE ROOT SOIL CELLS 2M X 2M

OUTLINE PLANTING SPECIFICATION

GENERAL: All work to be undertaken in accordance with BS4428:1989 and BS7370:1993.

WILDFLOWER SEED FOR REAR GARDENS, COMMUNAL AREAS AND POND

Apply in accordance with BS4428:1989 and BS7370:1993.

STRUCTURE TREES

Code	Species	Size	Quantity
1	Acacia baobab (S)	HS 12-14cm 3-5M	3
2	Acacia gummifera (S)	HS 12-14cm 3-5M	3
3	Acacia saligna (S)	HS 12-14cm 3-5M	3
4	Acacia saligna (S)	HS 12-14cm 3-5M	3
5	Acacia saligna (S)	HS 12-14cm 3-5M	3
6	Acacia saligna (S)	HS 12-14cm 3-5M	3
7	Acacia saligna (S)	HS 12-14cm 3-5M	3
8	Acacia saligna (S)	HS 12-14cm 3-5M	3
9	Acacia saligna (S)	HS 12-14cm 3-5M	3
10	Acacia saligna (S)	HS 12-14cm 3-5M	3

PLANT SCHEDULE

Code	Species	Size	Quantity
1	Acacia saligna (S)	HS 12-14cm 3-5M	3
2	Acacia saligna (S)	HS 12-14cm 3-5M	3
3	Acacia saligna (S)	HS 12-14cm 3-5M	3
4	Acacia saligna (S)	HS 12-14cm 3-5M	3
5	Acacia saligna (S)	HS 12-14cm 3-5M	3

ORNAMENTAL SHRUBS

Code	Species	Size	Quantity
1	Acacia saligna (S)	HS 12-14cm 3-5M	3
2	Acacia saligna (S)	HS 12-14cm 3-5M	3
3	Acacia saligna (S)	HS 12-14cm 3-5M	3
4	Acacia saligna (S)	HS 12-14cm 3-5M	3
5	Acacia saligna (S)	HS 12-14cm 3-5M	3

NATIVE HEDGE

Hedge planted in double staggered row, 500mm between rows, 500mm between plants in row.

Code	Species	Size	Quantity
1	Acacia saligna (S)	HS 12-14cm 3-5M	3
2	Acacia saligna (S)	HS 12-14cm 3-5M	3
3	Acacia saligna (S)	HS 12-14cm 3-5M	3
4	Acacia saligna (S)	HS 12-14cm 3-5M	3
5	Acacia saligna (S)	HS 12-14cm 3-5M	3

ORNAMENTAL HEDGE

Planted in staggered rows, No. in M

Code	Species	Size	Quantity
1	Acacia saligna (S)	HS 12-14cm 3-5M	3
2	Acacia saligna (S)	HS 12-14cm 3-5M	3
3	Acacia saligna (S)	HS 12-14cm 3-5M	3
4	Acacia saligna (S)	HS 12-14cm 3-5M	3
5	Acacia saligna (S)	HS 12-14cm 3-5M	3

TREE GRILLE

Planted in staggered rows, No. in M

Code	Species	Size	Quantity
1	Acacia saligna (S)	HS 12-14cm 3-5M	3
2	Acacia saligna (S)	HS 12-14cm 3-5M	3
3	Acacia saligna (S)	HS 12-14cm 3-5M	3
4	Acacia saligna (S)	HS 12-14cm 3-5M	3
5	Acacia saligna (S)	HS 12-14cm 3-5M	3

BARK MULCH

Whiteland, 75mm depth over shrub beds.

GRAVEL MULCH

Urban Village, 50mm depth quartzite pea gravel.

MAINTENANCE

Annual safety inspection, Annual safety inspection, Annual safety inspection.

LANDSCAPING LAYOUT SHEET 4 OF 6

PROJECT: PARCELS KMA & KMB, KINGSMERE, BICESTER
DRAWING NO: 1186 101-4
DATE: 09/14
LINDEN HOMES
The NOBLE Consultancy