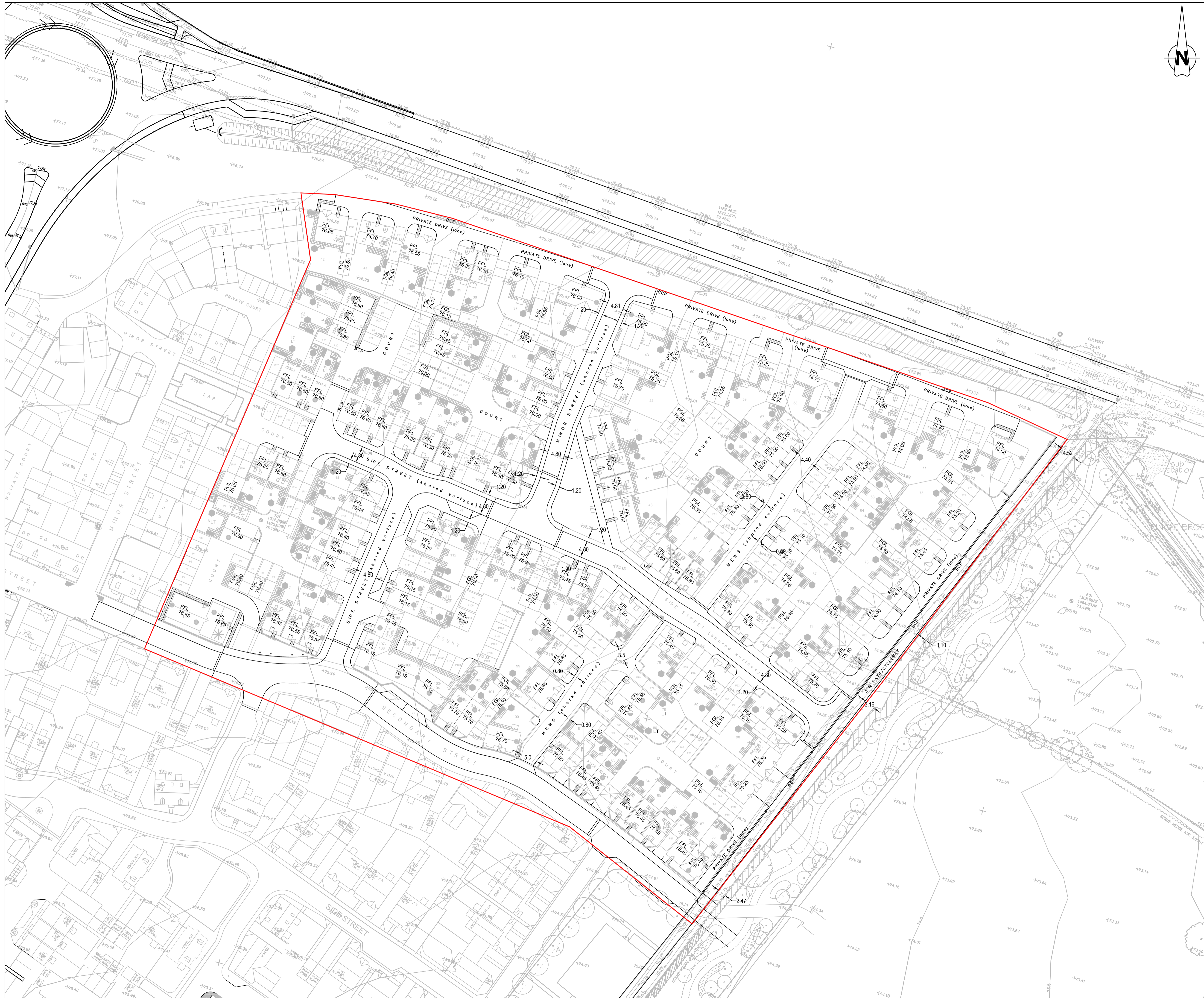
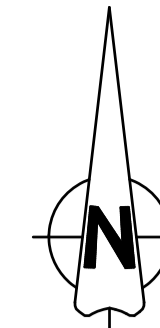


NOTES

- All levels relate to Ordnance Datum.
- All existing invert and road levels are to be checked on site prior to commencement of works. Any Variation to stated levels are to be reported to Bovis Engineers.
- Finished floor levels have been based on the boundary constraints, and WSP spine road setting out levels. Highway levels are subject to change following completion of the detailed design.
- Finished Floor Levels are subject to change ($\pm 450\text{mm}$) following completion of the detailed design.



Rev	Date	Details	By
E	11.09.14	Latest masterplan added.	SD
D	29.08.14	Layout updated following comments.	RM
C	24.07.14	Layout updated following comments.	RM
B	20.06.14	New masterplan layout added.	RM
A	17.06.14	Adoptable extents amended on turning head.	RM

Drainage Authority Approval Date

Highway Authority Approval Date

Do not scale from this drawing. Use written dimensions only. When shown relationships between slab levels and ground levels are to be checked on site. Any discrepancy or suggested modification to be reported to Design and Engineering Director.
 Note: This drawing is the copyright of Bovis Homes Ltd.

BOVIS HOMES

Bovis Homes Central Region
 Bromwich Court
 Highway Point
 Gorsey Lane
 Coleshill
 B46 1JU
 Tel: 01675 437 000
 Fax: 01675 437 094
 DX: 728340 Coleshill 2

Brookbanks Consulting

6150 Knights Court Solihull Parkway Birmingham B37 7WY
 Tel (0121) 329 4330 Fax (0121) 329 4331
 www.brookbanks.com

SITE: **KINGSMERE, BICESTER KM4**

DRAWING TITLE: **FINISHED FLOOR LEVELS**

DRAWN BY	DATE	DRAWING NO.	REV
SD	04.06.14	10109-HL-011	E
SCALE:	CHECKED/DATE		
1:500 @ A1	RM		