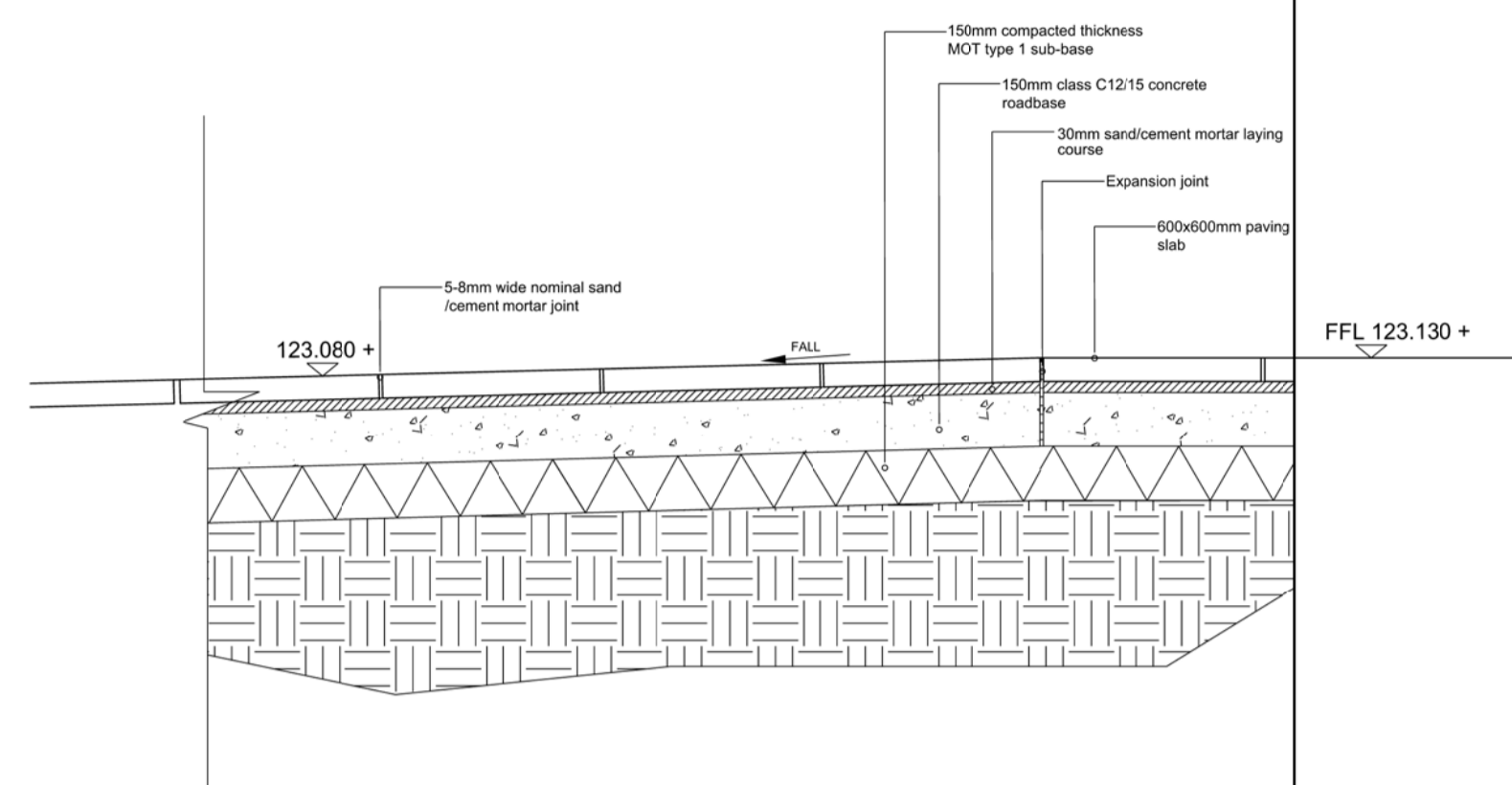
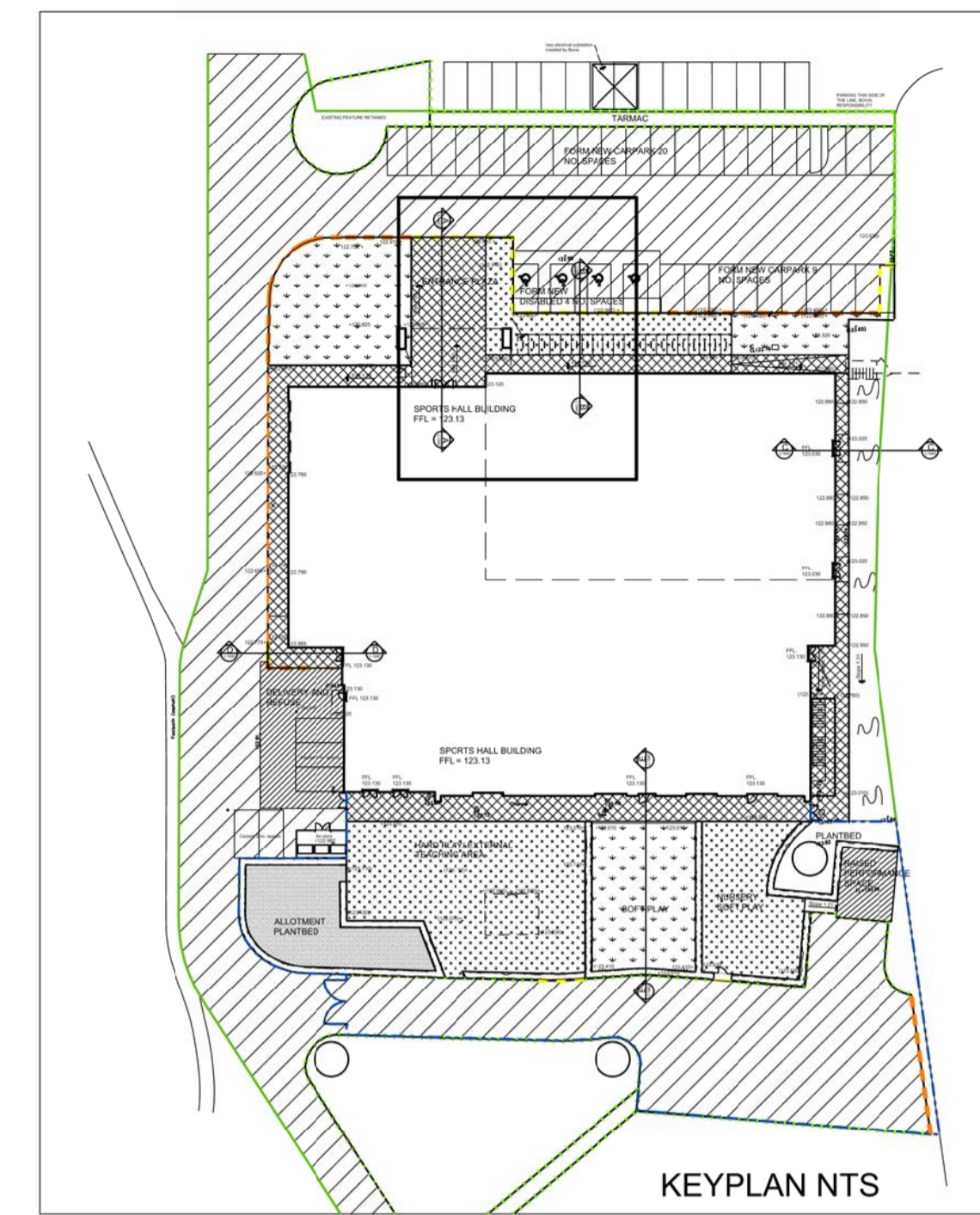


Detail AA
Tarmac/Kerb/Paving Slab



Detail AA
Paving slab ramp detail



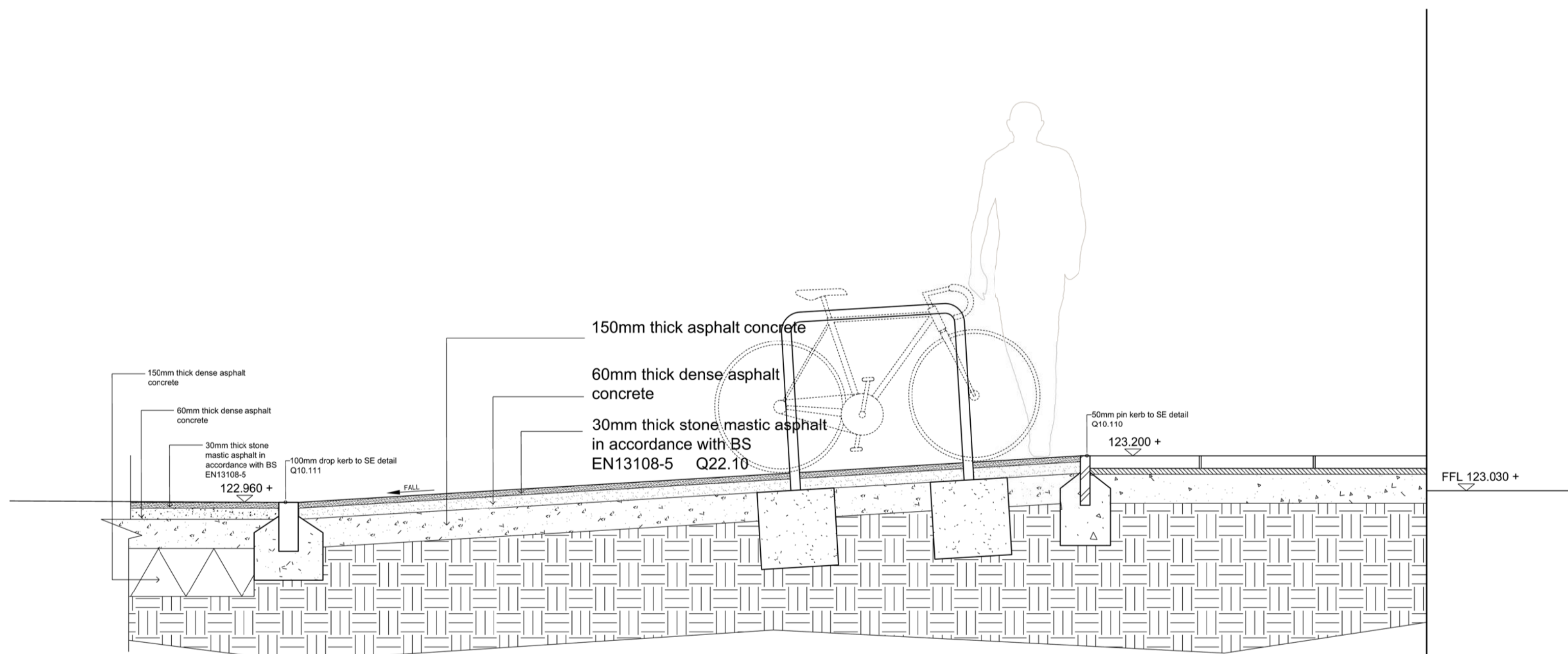
KEYPLAN NTS

LEGEND

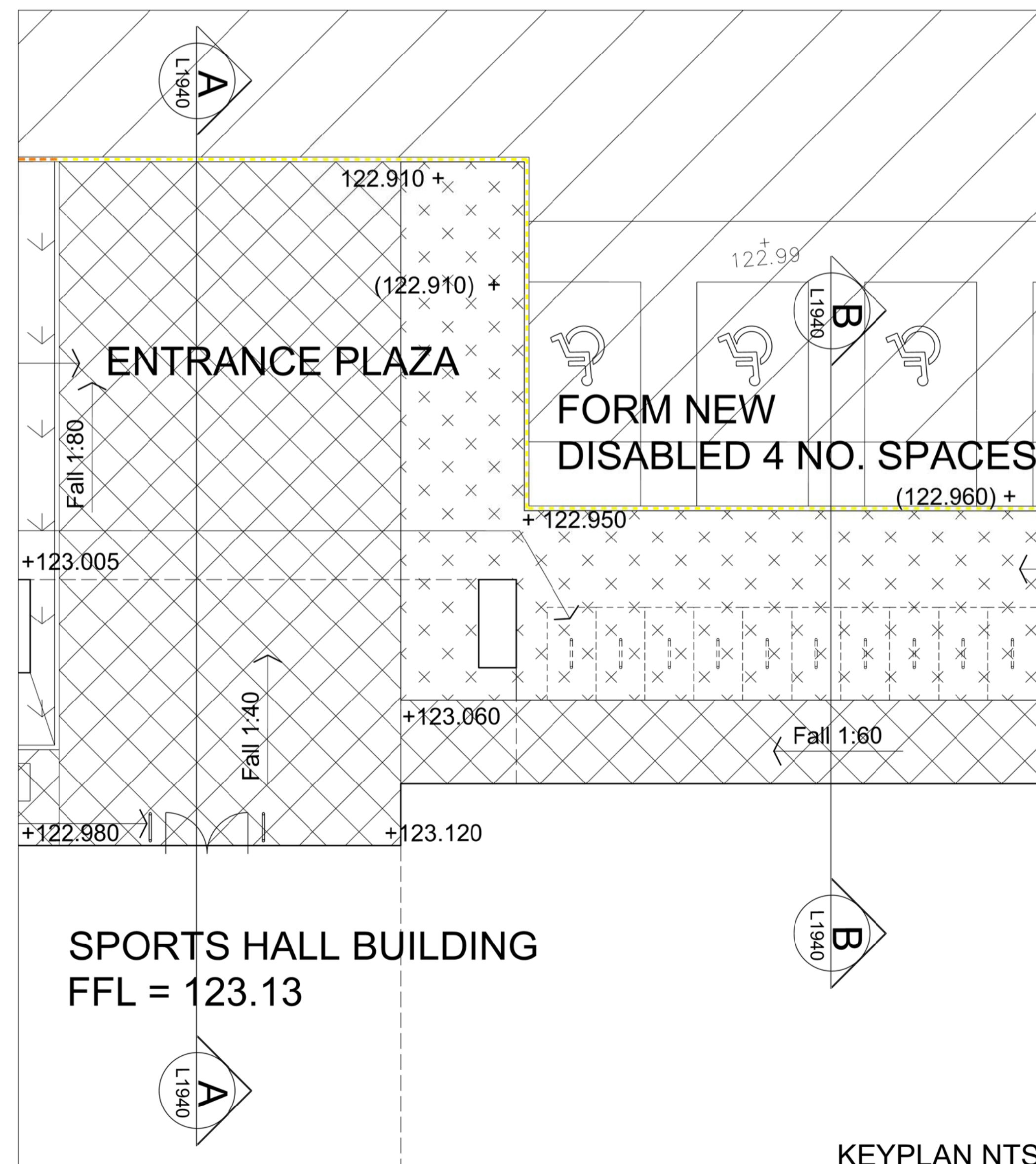
- Standard Pin Kerb Q10.110
- Standard Concrete Kerb Q10.111
- Existing Concrete Kerb to be Retained
- Drop Kerb Q10.111
- 1800mm High timber hit and miss fencing Q40.26/26A
- 1800mm High weld mesh fence to form secure line Q40.27B
- Chestnut Pale Fencing Q40.23
- Boundary Line (No Fence)
- Tarmacadam, standard vehicular to be retained.
- Tarmacadam, standard vehicular Q22.10
- Proposed Pedestrian Tarmacadam Q22.15
- Paving Slabs Q25.315
- Grass
- Bark mulch to nursery soft play Q.31.485A
- Soil
- Existing level
- Proposed levels tok = top of kerb, tow = top of wall
- Proposed coordinates

Revisions

Revision	Date	Revision notes	Design Change	Inspected by



Detail BB
Tarmac/Kerb/Tarmac/Bike stands/Paving slab



PRIMARY CONSTRUCTION

Job title
Heyford Park Free School Sports Hall

Drawing title
Proposed Landscape Details

Check all dimensions and verify on site. Report any errors or omissions

First issued	30.04.14
Drawn by	SN
Drawing sheet size	A1
Scale	1:20
Inspected by	JN
Job code	HFSK-SH
Drawing number prefix	L
Drawing number	1940
Revision	-



This line should measure 100mm along x and y axes when printed