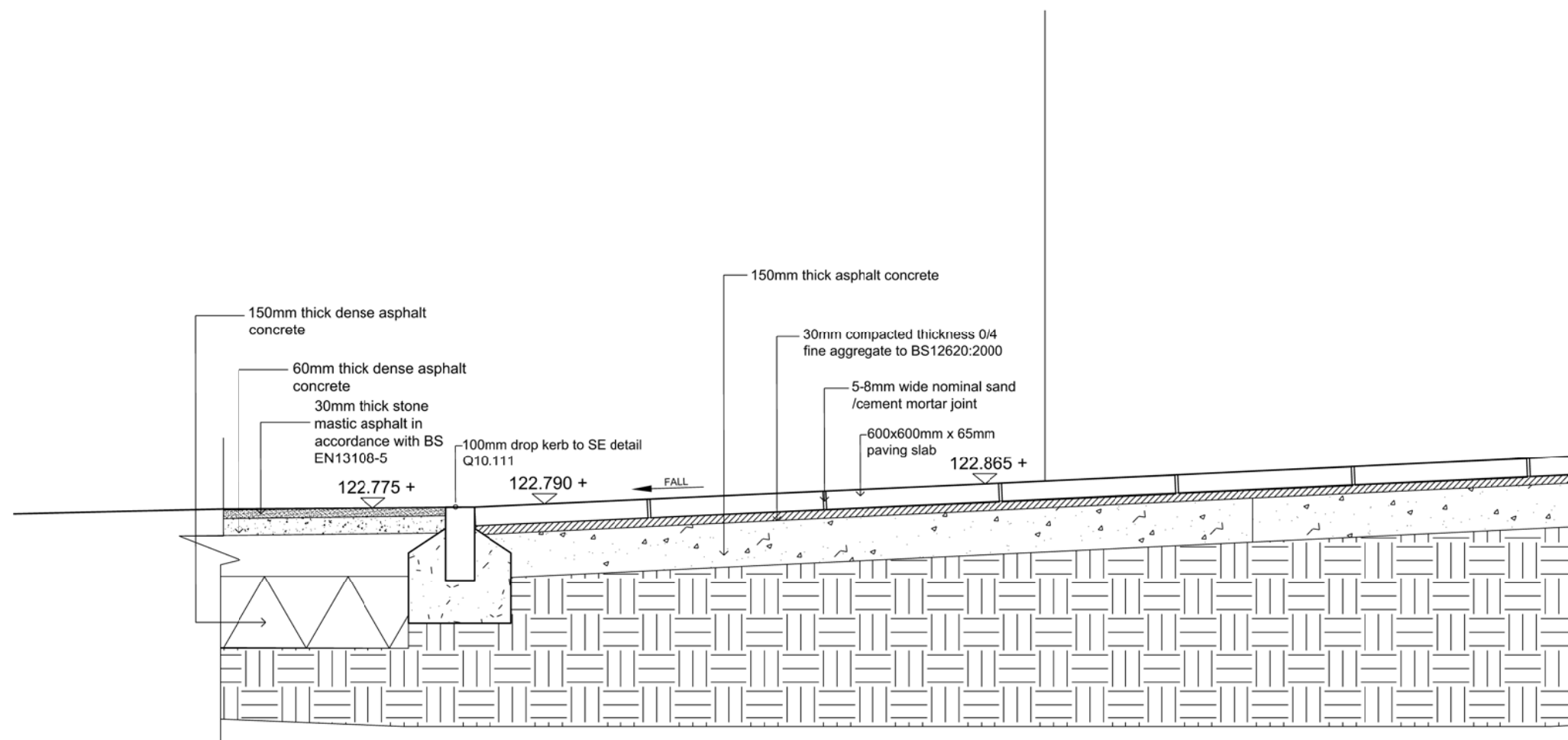
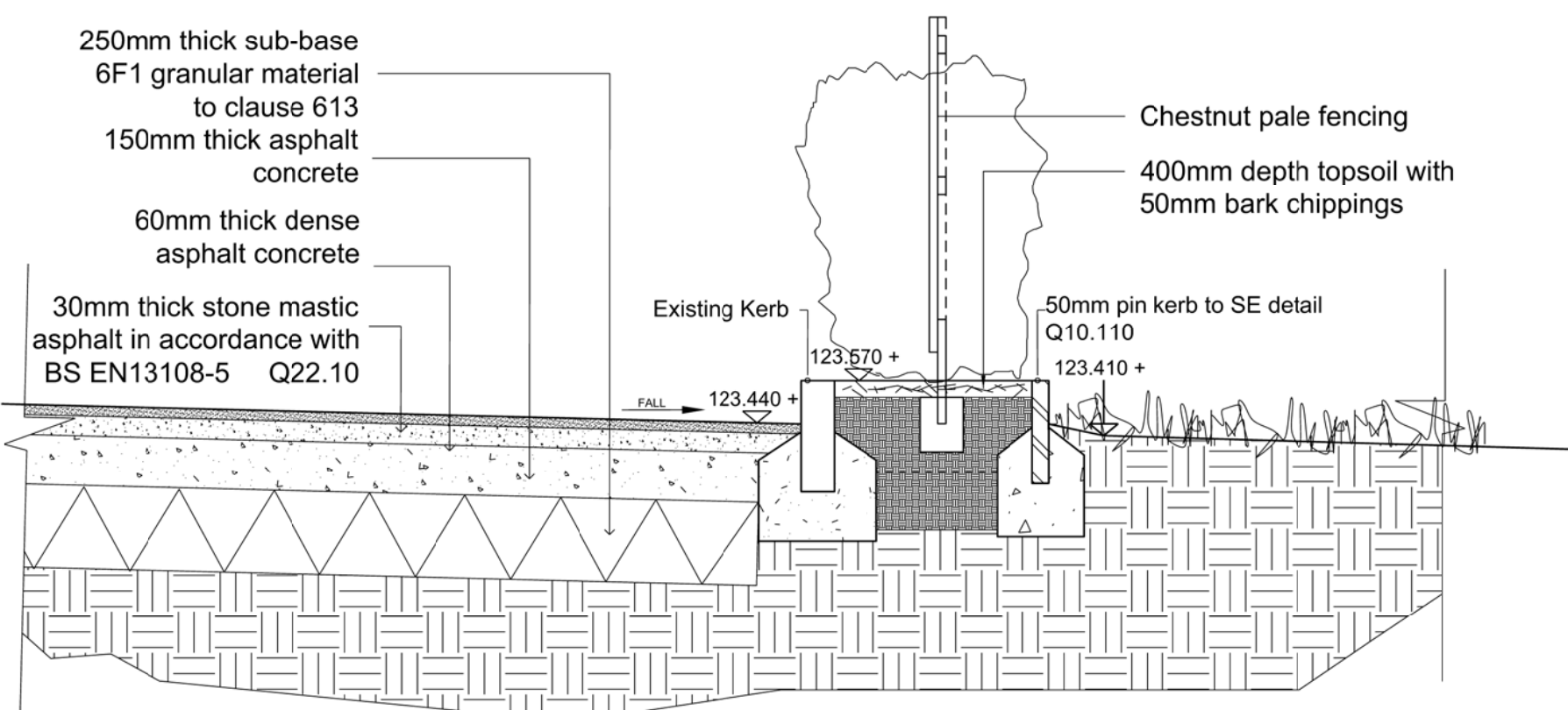


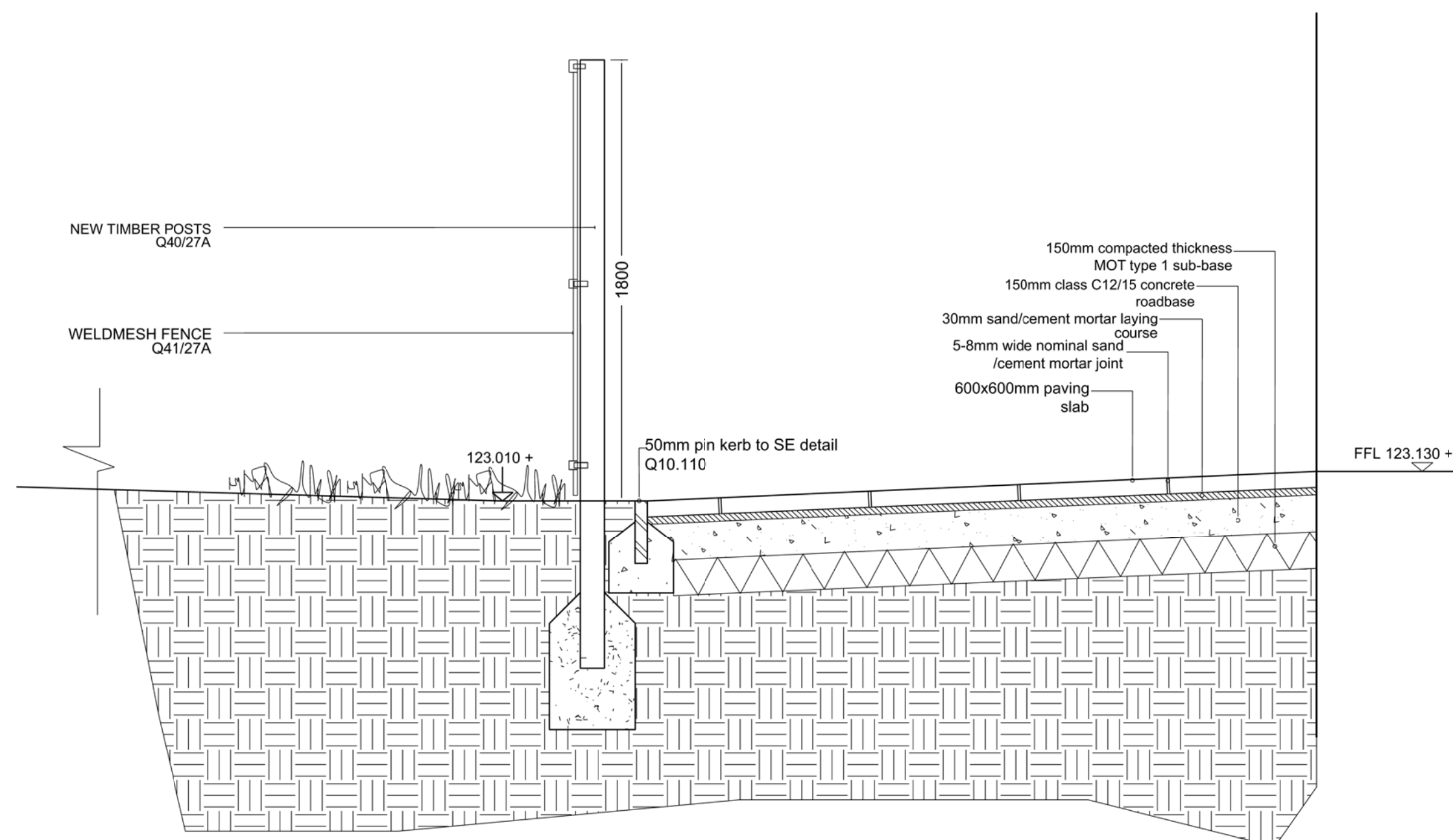
Detail CC
Paving slab / Grass bank detail



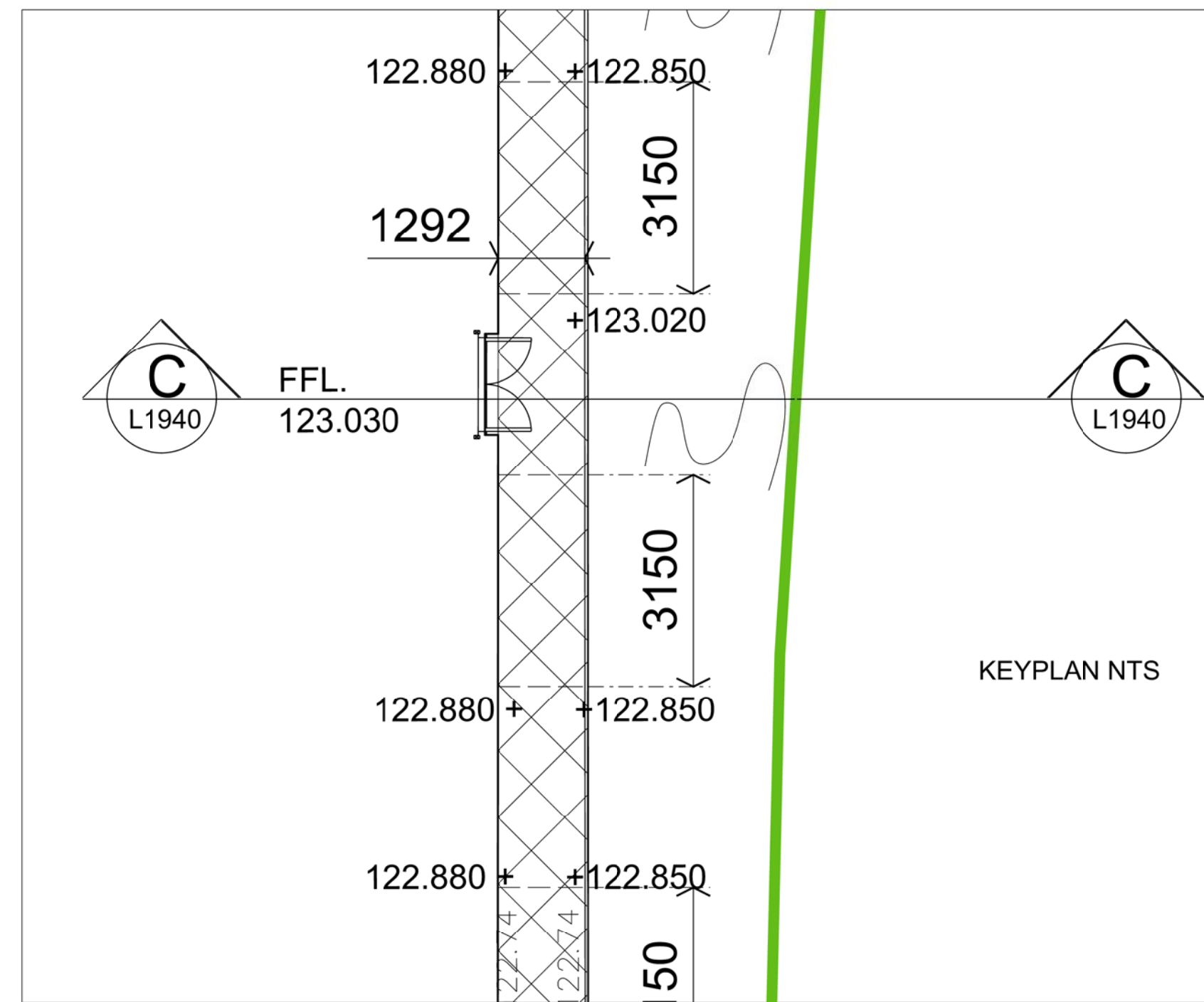
Detail DD
Tarmac/Kerb/Paving Slab



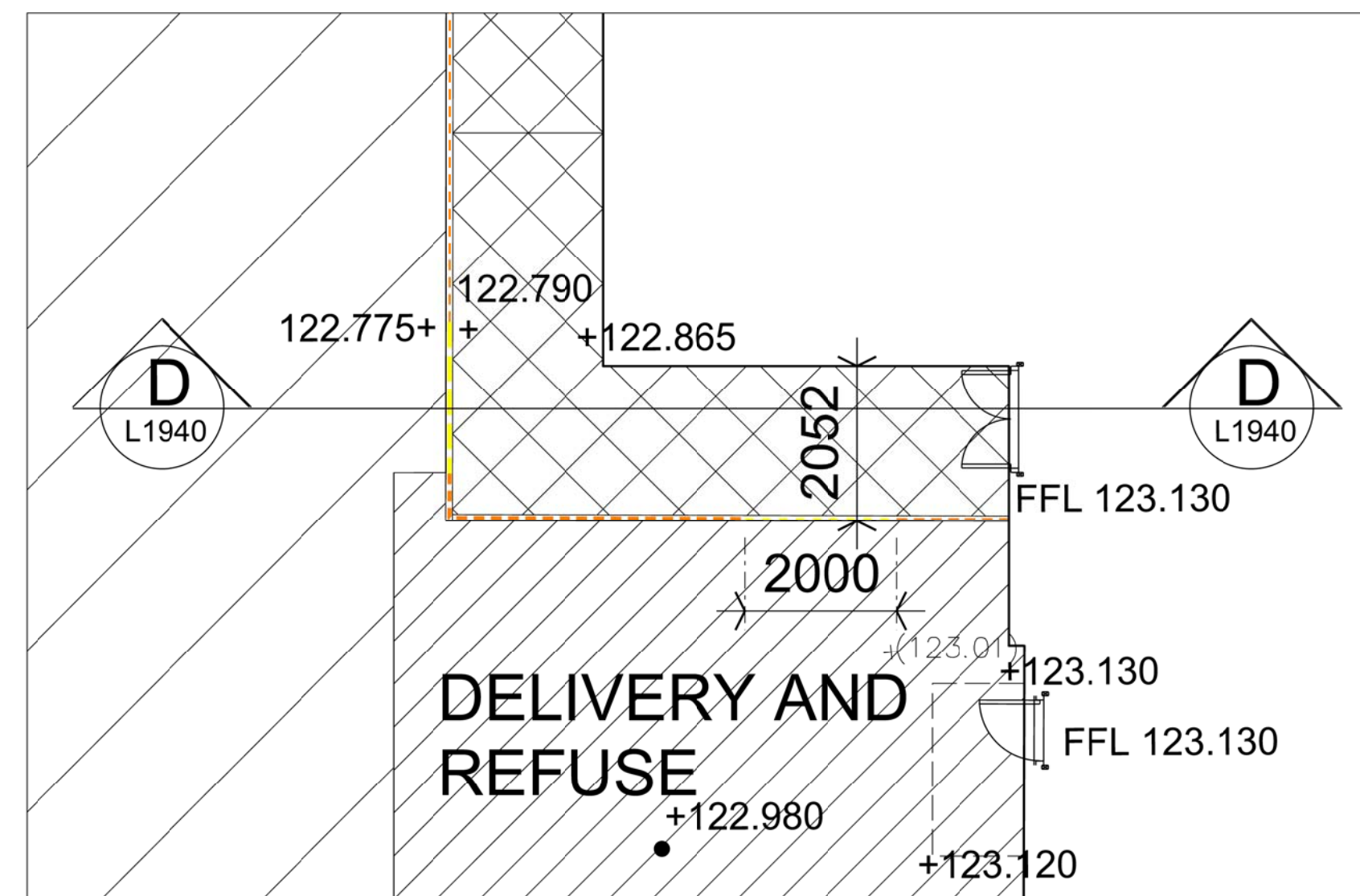
Detail EE
Tarmac / Hedge / Grass bank detail



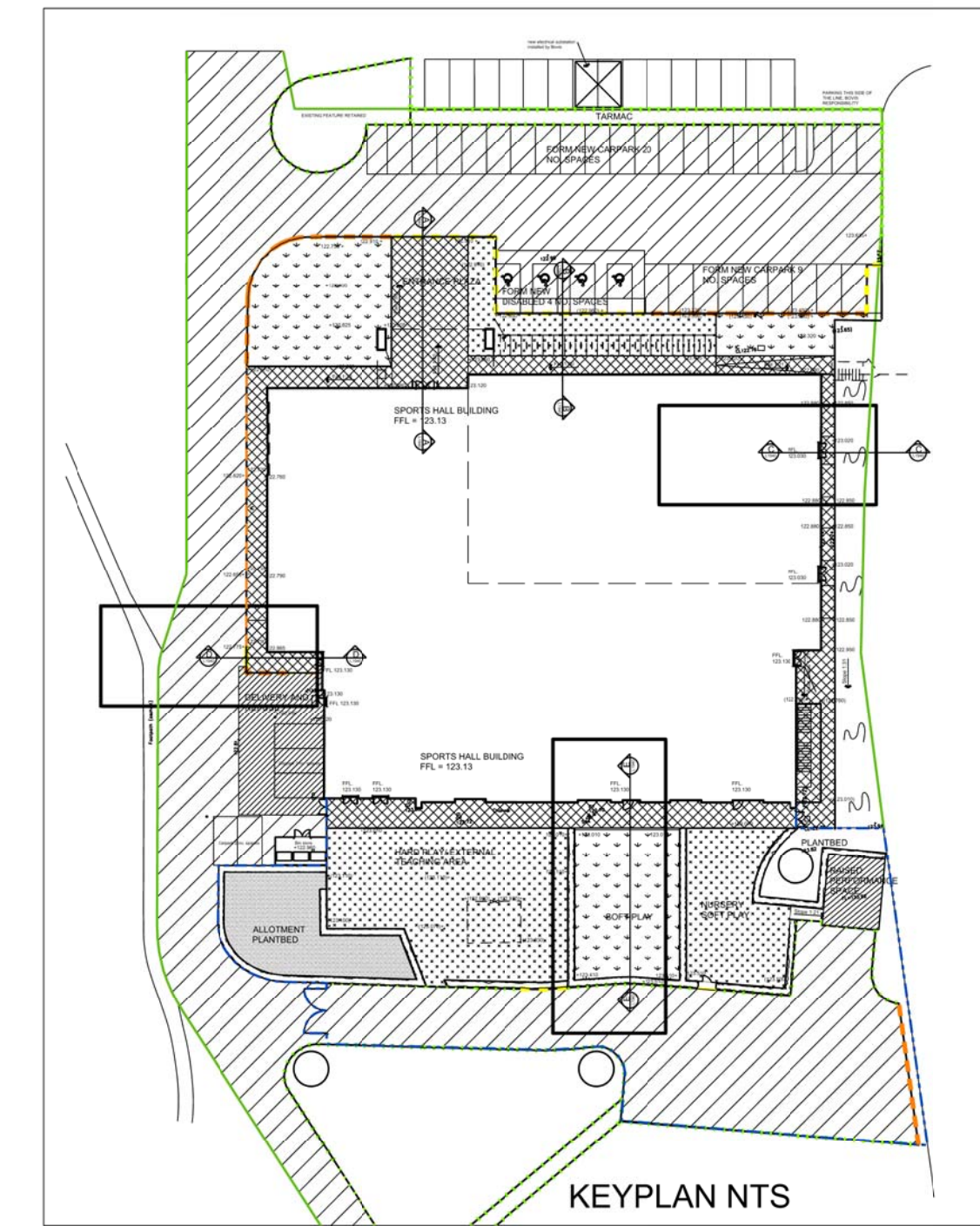
Detail EE
Paving slab / Grass bank detail



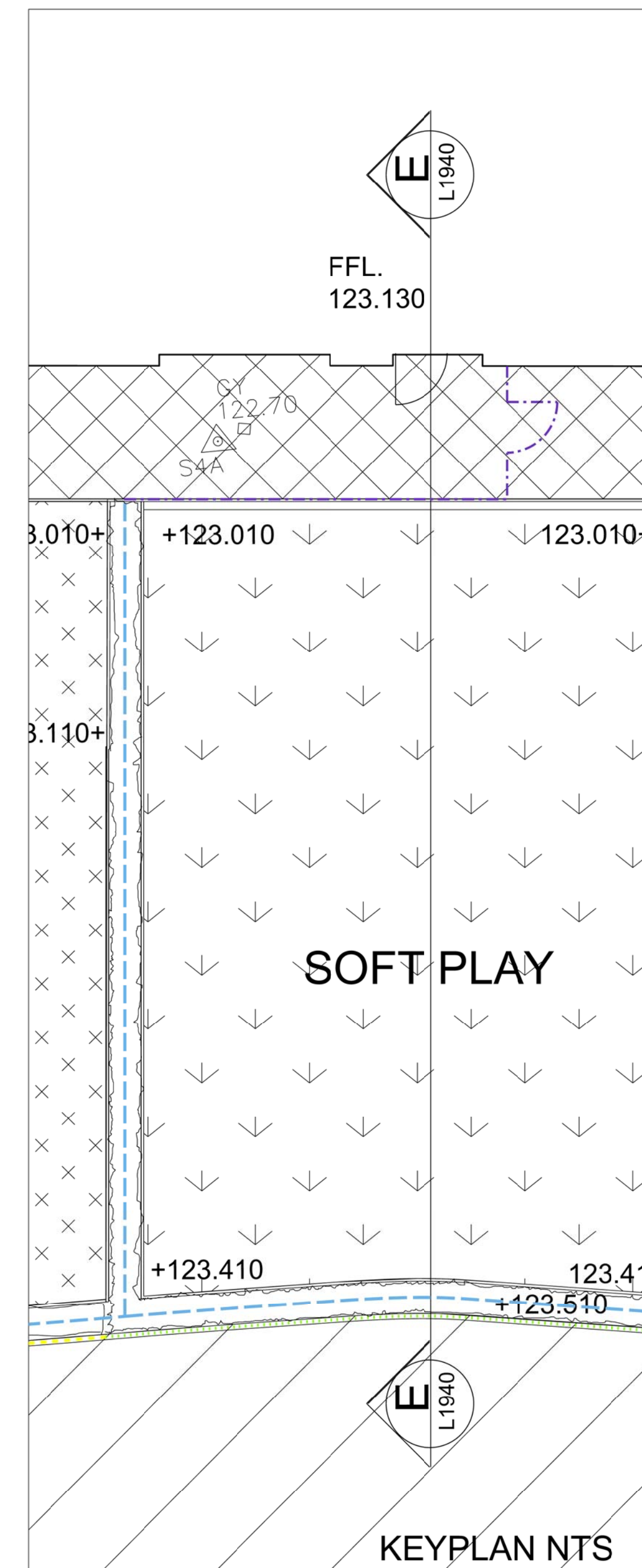
KEYPLAN NTS



DELIVERY AND
REFUSE



KEYPLAN NTS



KEYPLAN NTS

LEGEND

- Standard Pin Kerb Q10.110
- Standard Concrete Kerb Q10.111
- Existing Concrete Kerb to be Retained
- Drop Kerb Q10.111
- 1800mm High timber hit and miss fencing Q40.26/26A
- 1800mm High weld mesh fence to form secure line Q40.27B
- Chestnut Pale Fencing Q40.23
- Boundary Line (No Fence)
- Tarmac, standard vehicular to be retained.
- Tarmac, standard vehicular Q22.10
- Proposed Pedestrian Tarmac Q22.15
- Paving Slabs Q25.315
- Grass
- Bark mulch to nursery soft play Q.31.485A
- Soil
- Existing level
Proposed levels tok = top of kerb
tow = top of wall
Proposed coordinates

Revisions			
Revision	Date	Revision notes	Design Change

PRIMARY CONSTRUCTION

Heyford Park Free School
Sports Hall

Proposed Landscape Details

Check all dimensions and verify on site. Report any errors or omissions

First issued	30.04.14
Drawn by	SN
Drawing sheet size	A1
Scale	1:20
Inspected by	JN
Job code	HFSK-SH
Drawing number prefix	L
Drawing number	1941
Revision	-



This line should measure 100mm along x and y axes when printed