

Open Space & Native Boundary Trees

- | | |
|--------------------|------------------|
| Acer campestre | Malus sylvestris |
| Alnus glutinosa | Prunus avium |
| Betula pendula | Quercus robur |
| Carpinus betulus | Salix alba |
| Corylus avallana | Sorbus aria |
| Crataegus monogyna | Sorbus aucuparia |
| Fagus sylvatica | Tilia cordata |



Species Rich Wildflower Grass
Emorsgate EM2 General Purpose Meadow Mix, EH1 Hedgerow Mix & EM10 Tussock Mix



Ornamental Hedge Planting

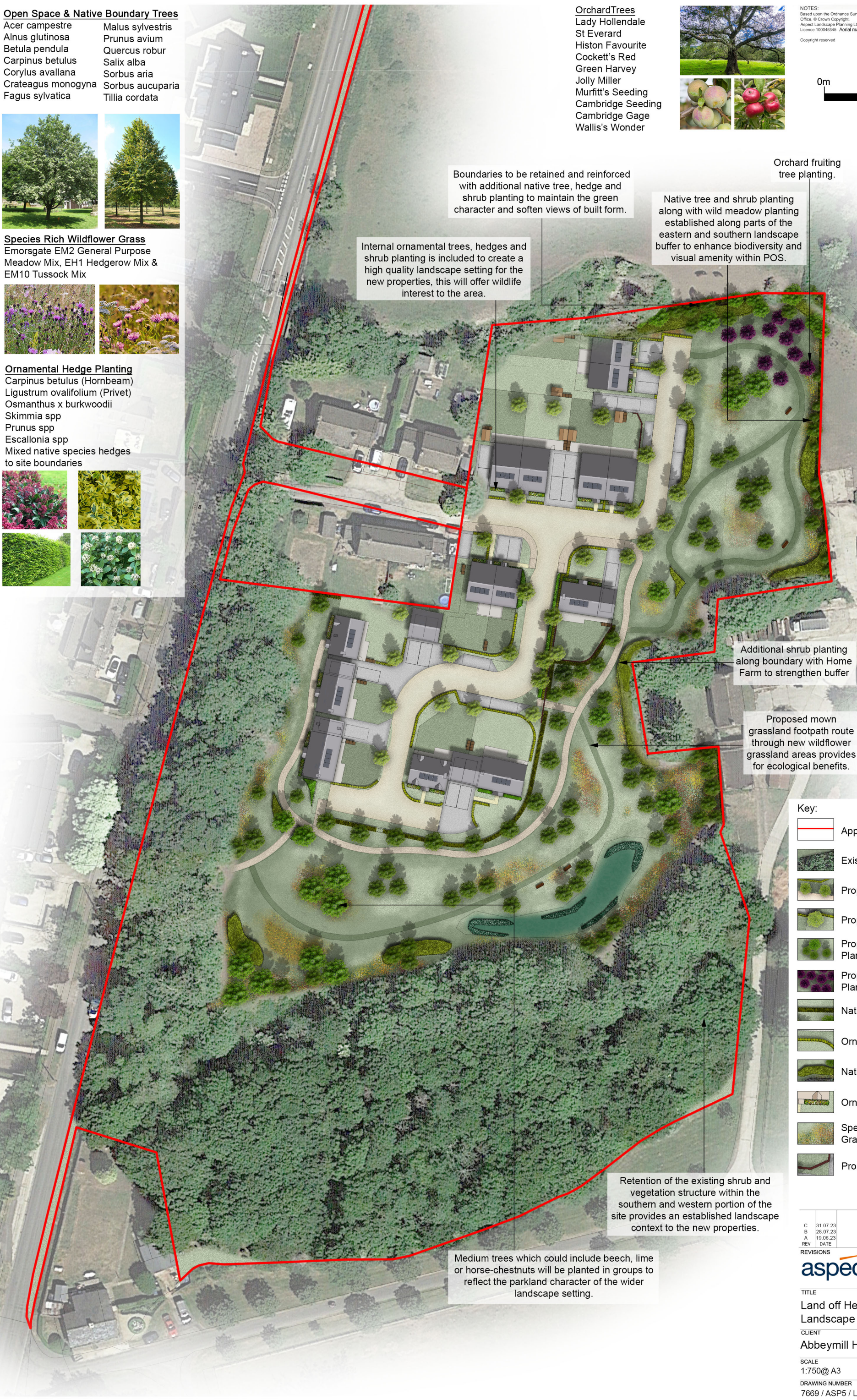
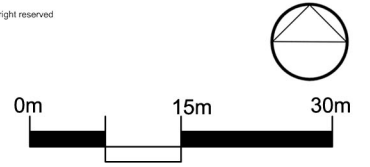
- Carpinus betulus (Hornbeam)
- Ligustrum ovalifolium (Privet)
- Osmanthus x burkwoodii
- Skimmia spp
- Prunus spp
- Escallonia spp
- Mixed native species hedges to site boundaries



- Orchard Trees**
Lady Hollandale
St Everard
Histon Favourite
Cockett's Red
Green Harvey
Jolly Miller
Murfitt's Seeding
Cambridge Seeding
Cambridge Gage
Wallis's Wonder



NOTES:
Based upon the Ordnance Survey map with permission of The Controller of Her Majesty's Stationery Office. © Crown Copyright.
Aspect Landscape Planning Ltd, West Court, Hardwick Business Park, Noral Way, Banbury OX16 2AF.
Licence 100045345 Aerial map data © 2012 Google
Copyright reserved



Boundaries to be retained and reinforced with additional native tree, hedge and shrub planting to maintain the green character and soften views of built form.

Internal ornamental trees, hedges and shrub planting is included to create a high quality landscape setting for the new properties, this will offer wildlife interest to the area.

Native tree and shrub planting along with wild meadow planting established along parts of the eastern and southern landscape buffer to enhance biodiversity and visual amenity within POS.

Orchard fruiting tree planting.

Native Shrub & Hedge Planting

- Acer campestre
- Cornus sanguinea
- Corylus avellana
- Crataegus monogyna
- Ilex aquifolium
- Ligustrum vulgare
- Prunus spinosa
- Rhamnus cathartica
- Rosa canina
- Sambucus nigra
- Viburnum lantana
- Viburnum opulus



- Mixed Native Hedgerows**
10% Cornus sanguinea
10% Corylus avellana
40% Crataegus monogyna
5% Ligustrum vulgare
25% Prunus spinosa
5% Rosa canina
5% Viburnum lantana



Additional shrub planting along boundary with Home Farm to strengthen buffer

Proposed mown grassland footpath route through new wildflower grassland areas provides for ecological benefits.

Retention of the existing shrub and vegetation structure within the southern and western portion of the site provides an established landscape context to the new properties.

Medium trees which could include beech, lime or horse-chestnuts will be planted in groups to reflect the parkland character of the wider landscape setting.

Key:

- Application Site Boundary
- Existing / Retained Vegetation
- Proposed Street Tree Planting
- Proposed Garden Tree Planting
- Proposed Open Space Tree Planting
- Proposed Fruiting Tree Planting
- Native Hedge Planting
- Ornamental Hedge Planting
- Native Shrub Planting
- Ornamental Shrub Planting
- Species Rich Wildflower Grass Mix
- Proposed Wall

REV	DATE	NOTE	BY	CHK'D
C	31.07.23	Update to comments	JJ	JJ
B	28.07.23	Update to layout	EL	SB
A	19.06.23	Update to layout	EL	SB

DRAWN: CHK'D



TITLE
Land off Heyford Road, Kirtlington Landscape Strategy Plan

CLIENT
Abbeymill Homes

SCALE	DATE	DRAWN	CHK'D
1:750@ A3	DEC 2022	BS	CJ

DRAWING NUMBER	REVISION
7669 / ASP5 / LSP	C