

4 doors to have flush threshold in accordance with Approved Document 4. Refer to standard detail SUP/PC11.

3) In hall devices mains operated self contained interconnected smoke detector alarm need in accordance with Approved Document part B1 section 1 and BS EN 14864. Detector to be fitted minimum 300mm away from light fittings.

Grates to be provided with mechanical extract fan with rating of 30 litres / second. Ducted within floor void to air brick externally.

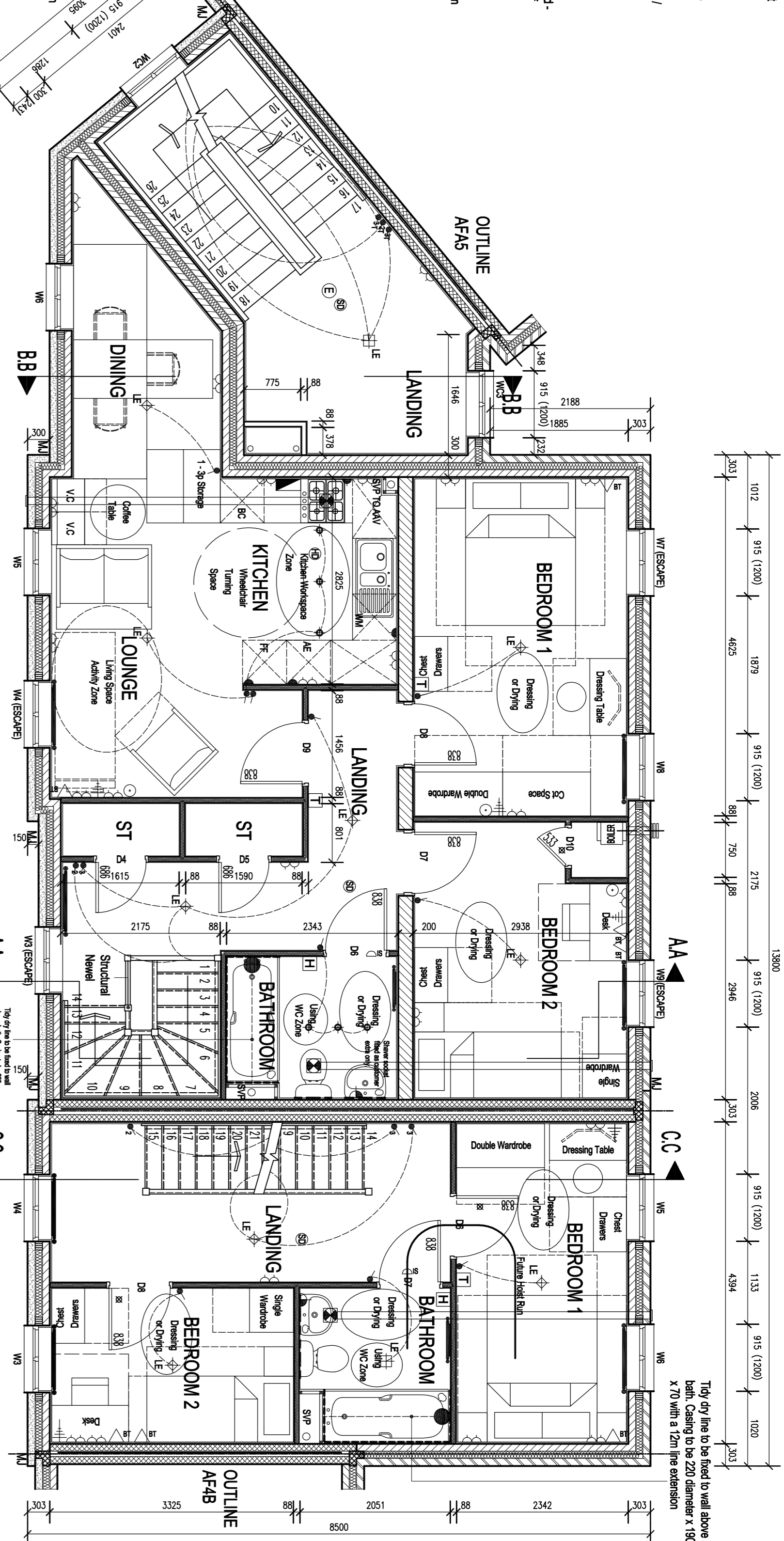
For details of kitchen layout see specialist drawings and documentation - layout shown as indicative. Tiling for full length of work surface to be provided in kitchen.

See fixed wall hung boiler to have high level balanced flue with wire guard - installation to comply with boiler manufacturers requirements. Location of unit under kitchen to be provided in accordance with Section 2.3 to 2.8 of Approved Document B1.

M/C, to be provided with wall mounted extract fan with rating of 30 litres / second and to be installed 150mm above ceiling with 150mm overlap. Ducted through void to air brick externally.

50 - Additional meter box for electrical ladder switch to be provided in accordance with Structural Engineers requirements.

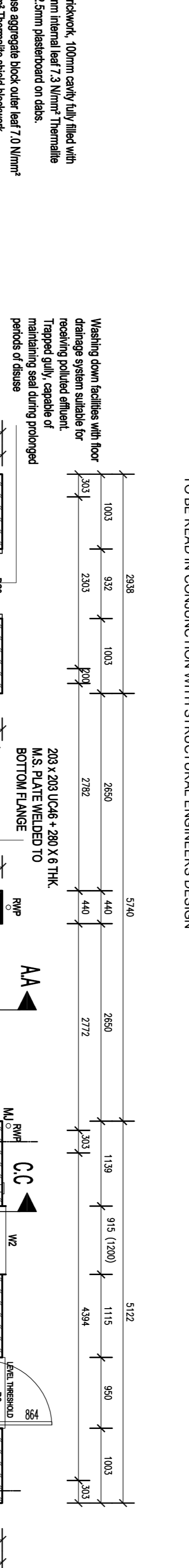
30 on landing devices mains operated self contained interconnected smoke detector alarm need in accordance with Approved Document part B1 section 1 and BS EN 14864. Detector to be fitted minimum 300mm away from light fittings.



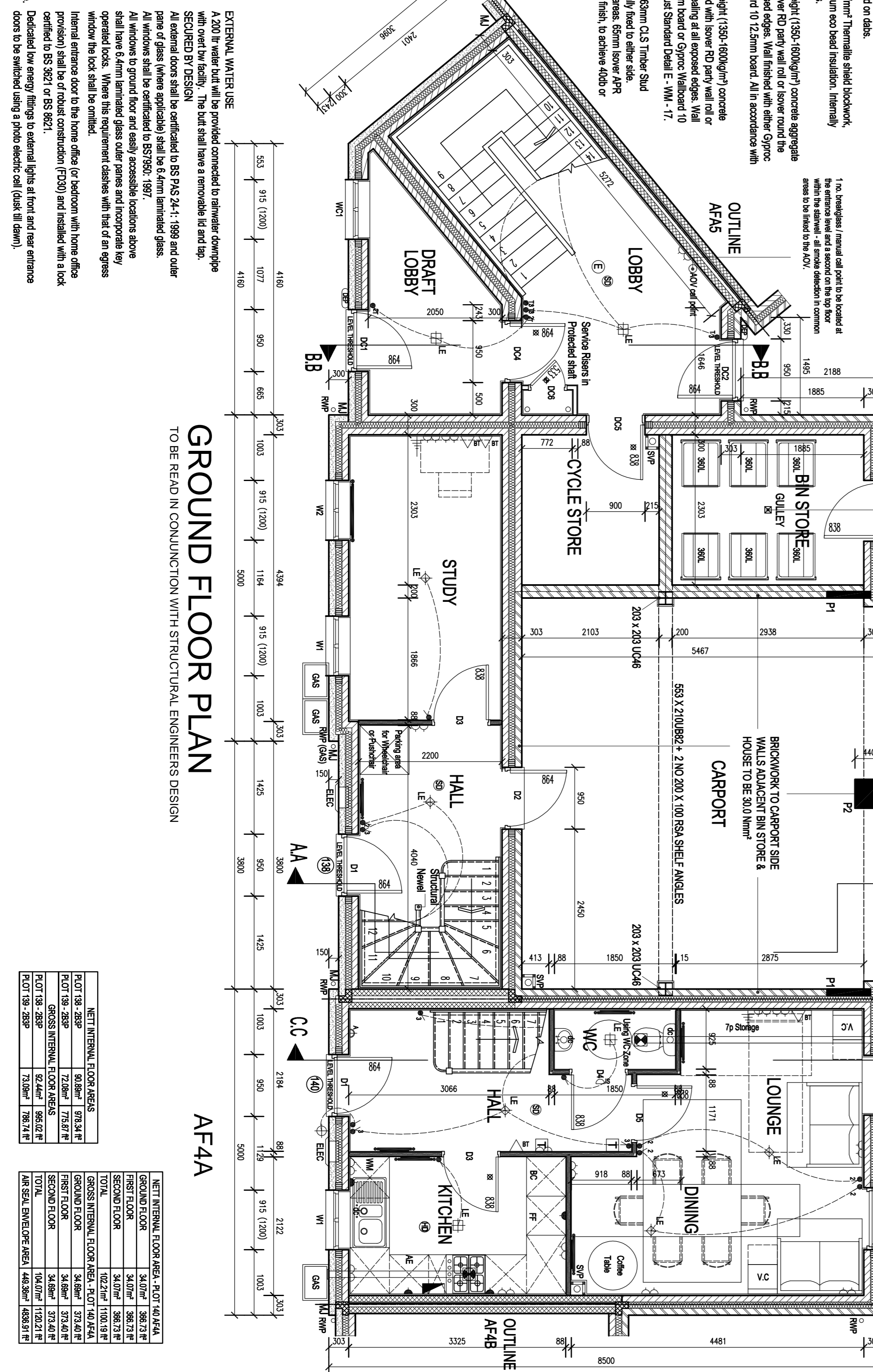
FIRST FLOOR PLAN TO BE READ IN CONJUNCTION WITH STRUCTURAL ENGINEERS DESIGN

AF4A

300mm cavity wall, 2 leaves, 100mm 7.5 Nimur Thermally shield blockwork, 100mm cavity wall, 100mm 7.5 Nimur Thermally shield blockwork, 100mm cavity wall, 100mm 7.5 Nimur Thermally shield blockwork, 100mm cavity wall, 100mm 7.5 Nimur Thermally shield blockwork.



CODES/NOTES: ECO-LABELLED WHITE GOODS, A/C, HEATING, INSULATION, EXTERNAL WATER USE, WINDOW SCHEDULE, WINDOW SCHEDULE - PLOT 140 FIRST FLOOR, WINDOW SCHEDULE - PLOT 138 FIRST FLOOR, WINDOW SCHEDULE - PLOT 140 FIRST FLOOR, WINDOW SCHEDULE - PLOT 138 FIRST FLOOR.



GROUND FLOOR PLAN TO BE READ IN CONJUNCTION WITH STRUCTURAL ENGINEERS DESIGN

AF4A

Table with 3 columns: DOOR LOCATION, DOOR LEAF SIZE, and COMMENTS. Lists door specifications for various rooms.

Table with 3 columns: DOOR SCHEDULE - PLOT 138 FIRST FLOOR, DOOR LOCATION, and COMMENTS. Lists door specifications for Plot 138.

Table with 3 columns: DOOR SCHEDULE - PLOT 140 FIRST FLOOR, DOOR LOCATION, and COMMENTS. Lists door specifications for Plot 140.

Table with 3 columns: DOOR SCHEDULE - PLOT 138 FIRST FLOOR, DOOR LOCATION, and COMMENTS. Lists door specifications for Plot 138.

Table with 3 columns: DOOR SCHEDULE - PLOT 140 FIRST FLOOR, DOOR LOCATION, and COMMENTS. Lists door specifications for Plot 140.

Table with 3 columns: DOOR SCHEDULE - PLOT 138 FIRST FLOOR, DOOR LOCATION, and COMMENTS. Lists door specifications for Plot 138.

Table with 3 columns: DOOR SCHEDULE - PLOT 140 FIRST FLOOR, DOOR LOCATION, and COMMENTS. Lists door specifications for Plot 140.

Table with 3 columns: DOOR SCHEDULE - PLOT 138 FIRST FLOOR, DOOR LOCATION, and COMMENTS. Lists door specifications for Plot 138.

Table with 3 columns: DOOR SCHEDULE - PLOT 140 FIRST FLOOR, DOOR LOCATION, and COMMENTS. Lists door specifications for Plot 140.

Table with 3 columns: DOOR SCHEDULE - PLOT 138 FIRST FLOOR, DOOR LOCATION, and COMMENTS. Lists door specifications for Plot 138.

Table with 3 columns: DOOR SCHEDULE - PLOT 140 FIRST FLOOR, DOOR LOCATION, and COMMENTS. Lists door specifications for Plot 140.

Table with 3 columns: DOOR SCHEDULE - PLOT 138 FIRST FLOOR, DOOR LOCATION, and COMMENTS. Lists door specifications for Plot 138.

Table with 3 columns: DOOR SCHEDULE - PLOT 140 FIRST FLOOR, DOOR LOCATION, and COMMENTS. Lists door specifications for Plot 140.

Table with 3 columns: DOOR SCHEDULE - PLOT 138 FIRST FLOOR, DOOR LOCATION, and COMMENTS. Lists door specifications for Plot 138.

Table with 3 columns: DOOR SCHEDULE - PLOT 140 FIRST FLOOR, DOOR LOCATION, and COMMENTS. Lists door specifications for Plot 140.

Table with 3 columns: DOOR SCHEDULE - PLOT 138 FIRST FLOOR, DOOR LOCATION, and COMMENTS. Lists door specifications for Plot 138.

Table with 3 columns: DOOR SCHEDULE - PLOT 140 FIRST FLOOR, DOOR LOCATION, and COMMENTS. Lists door specifications for Plot 140.

Table with 3 columns: DOOR SCHEDULE - PLOT 138 FIRST FLOOR, DOOR LOCATION, and COMMENTS. Lists door specifications for Plot 138.

Table with 3 columns: DOOR SCHEDULE - PLOT 140 FIRST FLOOR, DOOR LOCATION, and COMMENTS. Lists door specifications for Plot 140.

Table with 3 columns: DOOR SCHEDULE - PLOT 138 FIRST FLOOR, DOOR LOCATION, and COMMENTS. Lists door specifications for Plot 138.

Table with 3 columns: DOOR SCHEDULE - PLOT 140 FIRST FLOOR, DOOR LOCATION, and COMMENTS. Lists door specifications for Plot 140.

Table with 3 columns: DOOR SCHEDULE - PLOT 138 FIRST FLOOR, DOOR LOCATION, and COMMENTS. Lists door specifications for Plot 138.

Table with 3 columns: DOOR SCHEDULE - PLOT 140 FIRST FLOOR, DOOR LOCATION, and COMMENTS. Lists door specifications for Plot 140.

Table with 3 columns: DOOR SCHEDULE - PLOT 138 FIRST FLOOR, DOOR LOCATION, and COMMENTS. Lists door specifications for Plot 138.

Table with 3 columns: DOOR SCHEDULE - PLOT 140 FIRST FLOOR, DOOR LOCATION, and COMMENTS. Lists door specifications for Plot 140.

Table with 3 columns: DOOR SCHEDULE - PLOT 138 FIRST FLOOR, DOOR LOCATION, and COMMENTS. Lists door specifications for Plot 138.

Table with 3 columns: DOOR SCHEDULE - PLOT 140 FIRST FLOOR, DOOR LOCATION, and COMMENTS. Lists door specifications for Plot 140.

Table with 3 columns: DOOR SCHEDULE - PLOT 138 FIRST FLOOR, DOOR LOCATION, and COMMENTS. Lists door specifications for Plot 138.

Table with 3 columns: DOOR SCHEDULE - PLOT 140 FIRST FLOOR, DOOR LOCATION, and COMMENTS. Lists door specifications for Plot 140.

Table with 3 columns: DOOR SCHEDULE - PLOT 138 FIRST FLOOR, DOOR LOCATION, and COMMENTS. Lists door specifications for Plot 138.

Table with 3 columns: DOOR SCHEDULE - PLOT 140 FIRST FLOOR, DOOR LOCATION, and COMMENTS. Lists door specifications for Plot 140.

Table with 3 columns: DOOR SCHEDULE - PLOT 138 FIRST FLOOR, DOOR LOCATION, and COMMENTS. Lists door specifications for Plot 138.

Table with 3 columns: DOOR SCHEDULE - PLOT 140 FIRST FLOOR, DOOR LOCATION, and COMMENTS. Lists door specifications for Plot 140.

Table with 3 columns: DOOR SCHEDULE - PLOT 138 FIRST FLOOR, DOOR LOCATION, and COMMENTS. Lists door specifications for Plot 138.

Table with 3 columns: DOOR SCHEDULE - PLOT 140 FIRST FLOOR, DOOR LOCATION, and COMMENTS. Lists door specifications for Plot 140.

Table with 3 columns: DOOR SCHEDULE - PLOT 138 FIRST FLOOR, DOOR LOCATION, and COMMENTS. Lists door specifications for Plot 138.

Table with 3 columns: DOOR SCHEDULE - PLOT 140 FIRST FLOOR, DOOR LOCATION, and COMMENTS. Lists door specifications for Plot 140.

Table with 3 columns: DOOR SCHEDULE - PLOT 138 FIRST FLOOR, DOOR LOCATION, and COMMENTS. Lists door specifications for Plot 138.

Table with 3 columns: DOOR SCHEDULE - PLOT 140 FIRST FLOOR, DOOR LOCATION, and COMMENTS. Lists door specifications for Plot 140.

Table with 3 columns: DOOR SCHEDULE - PLOT 138 FIRST FLOOR, DOOR LOCATION, and COMMENTS. Lists door specifications for Plot 138.

Table with 3 columns: DOOR SCHEDULE - PLOT 140 FIRST FLOOR, DOOR LOCATION, and COMMENTS. Lists door specifications for Plot 140.

Table with 3 columns: DOOR SCHEDULE - PLOT 138 FIRST FLOOR, DOOR LOCATION, and COMMENTS. Lists door specifications for Plot 138.

Table with 3 columns: DOOR SCHEDULE - PLOT 140 FIRST FLOOR, DOOR LOCATION, and COMMENTS. Lists door specifications for Plot 140.

Table with 3 columns: DOOR SCHEDULE - PLOT 138 FIRST FLOOR, DOOR LOCATION, and COMMENTS. Lists door specifications for Plot 138.

Table with 3 columns: DOOR SCHEDULE - PLOT 140 FIRST FLOOR, DOOR LOCATION, and COMMENTS. Lists door specifications for Plot 140.

Table with 3 columns: DOOR SCHEDULE - PLOT 138 FIRST FLOOR, DOOR LOCATION, and COMMENTS. Lists door specifications for Plot 138.

Table with 3 columns: DOOR SCHEDULE - PLOT 140 FIRST FLOOR, DOOR LOCATION, and COMMENTS. Lists door specifications for Plot 140.

Table with 3 columns: DOOR SCHEDULE - PLOT 138 FIRST FLOOR, DOOR LOCATION, and COMMENTS. Lists door specifications for Plot 138.

13 AWP Single switched socket outlet

13 AWP Double switched socket outlet

13 AWP RCB metal clad double switched socket outlet

Single Socket Outlet at Low Level with Remote spur switch at worktop level

13 AWP RCB metal clad double switched socket outlet

13 AWP RCB metal clad double switched socket outlet

13 AWP RCB metal clad double switched socket outlet

13 AWP RCB metal clad double switched socket outlet

13 AWP RCB metal clad double switched socket outlet

13 AWP RCB metal clad double switched socket outlet

13 AWP RCB metal clad double switched socket outlet

13 AWP RCB metal clad double switched socket outlet

13 AWP RCB metal clad double switched socket outlet

13 AWP RCB metal clad double switched socket outlet

13 AWP RCB metal clad double switched socket outlet

13 AWP RCB metal clad double switched socket outlet

13 AWP RCB metal clad double switched socket outlet

13 AWP RCB metal clad double switched socket outlet

13 AWP RCB metal clad double switched socket outlet

13 AWP RCB metal clad double switched socket outlet

13 AWP RCB metal clad double switched socket outlet

13 AWP RCB metal clad double switched socket outlet

13 AWP RCB metal clad double switched socket outlet

13 AWP RCB metal clad double switched socket outlet

13 AWP RCB metal clad double switched socket outlet

13 AWP RCB metal clad double switched socket outlet

13 AWP RCB metal clad double switched socket outlet

13 AWP RCB metal clad double switched socket outlet

13 AWP RCB metal clad double switched socket outlet

13 AWP RCB metal clad double switched socket outlet

13 AWP RCB metal clad double switched socket outlet

13 AWP RCB metal clad double switched socket outlet

13 AWP RCB metal clad double switched socket outlet

13 AWP RCB metal clad double switched socket outlet

13 AWP RCB metal clad double switched socket outlet

13 AWP RCB metal clad double switched socket outlet

13 AWP RCB metal clad double switched socket outlet

13 AWP RCB metal clad double switched socket outlet

13 AWP RCB metal clad double switched socket outlet

13 AWP RCB metal clad double switched socket outlet

13 AWP RCB metal clad double switched socket outlet

13 AWP RCB metal clad double switched socket outlet

13 AWP RCB metal clad double switched socket outlet

13 AWP RCB metal clad double switched socket outlet

13 AWP RCB metal clad double switched socket outlet

13 AWP RCB metal clad double switched socket outlet

13 AWP RCB metal clad double switched socket outlet

13 AWP RCB metal clad double switched socket outlet

13 AWP RCB metal clad double switched socket outlet