

Washing down facilities with floor drainage system suitable for receiving polluted material. (Traps, gully, siphon or retaining seal) during prolonged periods of disease.

All doors to have fast threshold in accordance with Approved Document M, Refer to standard detail SVP/DCU.1.

SD in lift enclosures must be operated self contained thermostatically controlled smoke detector / alarm fitted in accordance with Approved Document part B1 section 1 and BS EN 14694. Detector to be fitted minimum 300mm away from light fittings.

Kitchen to be provided with mechanical extract fan with rating of 30 litres / second. Ducts with floor void to air lock externally.

For details of kitchen layout see specialist drawings and documentation - layout shown is indicative. Fitting for full length of work surface to underside of work units, or 450mm from worktop as applicable.

Gas fired wall hung boiler to have high level balanced flue with wide guard - installation comply with boiler manufacturers requirements, location of boiler to comply with Approved Document part 1 section 3.2.3 to 3.2.8 and Design 54.

Heating efficiency of boiler to have minimum SEER/K value of 88% for mass radiant gas in accordance with Approved Document part 1 section 1.7 and Table 2.

M1 Movement joints in accordance with Structural Engineers requirements.

P1 - Pedestals to beams to be 400 x 100 x 215mm deep centred as required.

P2 - Pedestals to beams to be 400 x 100 x 215mm deep.

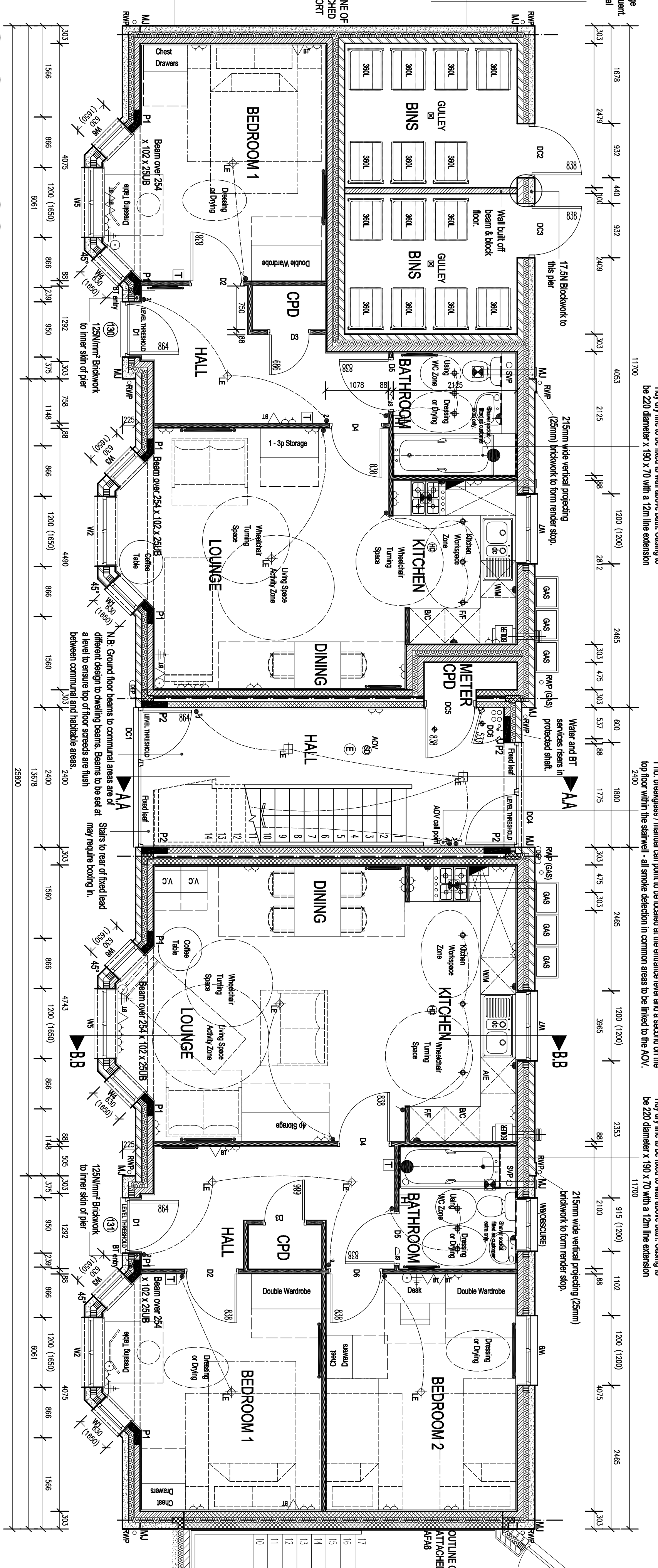
All partitions forming protected lockers to a fall to be taken up to underside of concrete planks, this includes the plasterboard, insulate ventilation ductwork in lockers from both floor and ceiling, where possible install energy light to aid as possible. Install fire fire detector and fire alarm system where duct passes through wall to provide full hour protection to system. Apply fire resistant mastic around perimeter of the duct to plasterboard ensuring all gaps are sufficiently filled.

ELECTRICAL KEY

- 13 AMP Double switched socket outlet
- 13 AMP RCCB metal clad double switched socket outlet
- Single Socket Outlet at Low Level with Remote spur switch at workshop level
- Insulated Low Energy CFL/Fluorescent light fitting
- Low energy external light (lamps only)
- External TPO
- Low energy external halogen light (lamps only)
- Decorative external light (lamps only)
- Door bell controller (customer optional extra)
- Localish Consumer unit at 1200mm above F.F.L.
- Immersion heater with thermostat
- Central heating thermostat control
- Handheld control
- Order: Combi-Boiler and Switch for 30a supply
- Kitchen Heater (See per specialist drawings)
- Grid switch
- Deciduled Low Energy Emergency escape light fitting on separate circuit to BS5266
- Small scale system with Ingersoll BT socket wind to communal dish
- Auto empty pad including empty phone system
- Electrical Notes:
- Electrical sockets and switches shall be located to comply with Approved Document Section 8 Diagram 23. All to be located vertically no lower than 450mm from FFL and no higher than 1200mm from FFL.
- Electrical sockets and switches shall be located to comply with Approved Document Section 8 Diagram 23. All to be located vertically no lower than 450mm from FFL and no higher than 1200mm from FFL.
- Electrical sockets and switches shall be located to comply with Approved Document Section 8 Diagram 23. All to be located vertically no lower than 450mm from FFL and no higher than 1200mm from FFL.
- Electrical sockets and switches shall be located to comply with Approved Document Section 8 Diagram 23. All to be located vertically no lower than 450mm from FFL and no higher than 1200mm from FFL.

GROUND FLOOR PLAN

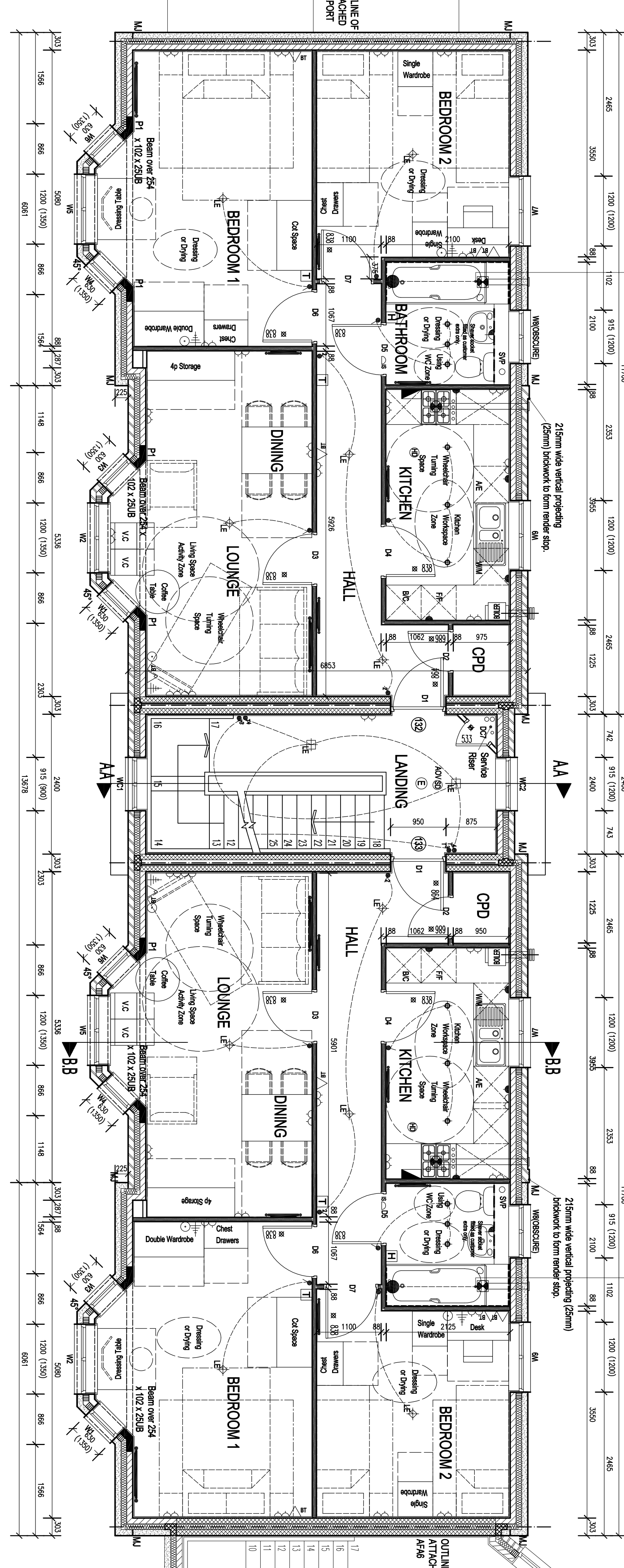
Tidy dry line to be fixed to wall above beam. Ceiling to be 220 diameter x 180 x 70 with a 12m line extension



Tidy dry line to be fixed to wall above beam. Ceiling to be 220 diameter x 180 x 70 with a 12m line extension

1 no. breakfast / manual call point to be located at the entrance level and a second on the top floor within the staircase - all smoke detection in common areas to be fitted to the AO.V.

Tidy dry line to be fixed to wall above beam. Ceiling to be 220 diameter x 180 x 70 with a 12m line extension



FIRST FLOOR PLAN

Tidy dry line to be fixed to wall above beam. Ceiling to be 220 diameter x 180 x 70 with a 12m line extension

215mm wide vertical projecting (25mm) backwork to form render stop.

215mm wide vertical projecting (25mm) backwork to form render stop.

215mm wide vertical projecting (25mm) backwork to form render stop.

215mm wide vertical projecting (25mm) backwork to form render stop.

215mm wide vertical projecting (25mm) backwork to form render stop.

215mm wide vertical projecting (25mm) backwork to form render stop.

215mm wide vertical projecting (25mm) backwork to form render stop.

CODE/HOMES

ECO-LABELLED WHITE GOODS

All white goods supplied must have energy rating as follows:

- Refrigerator: A
- Washing Machine: A
- Dishwasher: A
- Washer Driers: A
- Tumble Driers: B

HOME OFFICE

Home office provision located as applicable, consisting of additional double socket and double BT point.

INSULATION

Insulation used in the roof, walls, doors, floors and plumbing shall have an ozone depletion potential of zero and a global warming potential of less than 5.

NON-EMISSIONS

Heating efficiency of boiler to be not less than 88% (SEER/K) for mains radiant gas. The dry nox emissions of the selected boiler shall be not greater than 100mg/kWh.

SECURED BY DESIGN

All external doors shall be certified to BS PAS 24-1:1999 and other parts of glass (where applicable) shall be 6.38mm laminated glass. All windows shall be certified to BS7950:1997.

All windows to ground floor and ceiling to accessible lockers shall be fitted with double glazing to provide a minimum of 20dB sound insulation. All windows to ground floor and ceiling to accessible lockers shall be fitted with double glazing to provide a minimum of 20dB sound insulation.

Internal entrance door to be to same office (or bedroom with home office provision) of 2000mm x 900mm and finished with a lock certified to BS 3621.

External entrance door to be to same office (or bedroom with home office provision) of 2000mm x 900mm and finished with a lock certified to BS 3621.

External entrance door to be to same office (or bedroom with home office provision) of 2000mm x 900mm and finished with a lock certified to BS 3621.

Room	Area (sqm)	Volume (cu m)
NETT INTERNAL FLOOR AREA		
FLO1.01 - 101	53.51m²	575.51m³
FLO1.02 - 102	72.71m²	777.51m³
FLO1.03 - 103	72.71m²	777.51m³
FLO1.04 - 104	72.71m²	777.51m³
FLO1.05 - 105	72.71m²	777.51m³
FLO1.06 - 106	72.71m²	777.51m³
FLO1.07 - 107	72.71m²	777.51m³
FLO1.08 - 108	72.71m²	777.51m³
FLO1.09 - 109	72.71m²	777.51m³
FLO1.10 - 110	72.71m²	777.51m³
FLO1.11 - 111	72.71m²	777.51m³
FLO1.12 - 112	72.71m²	777.51m³
FLO1.13 - 113	72.71m²	777.51m³
FLO1.14 - 114	72.71m²	777.51m³
FLO1.15 - 115	72.71m²	777.51m³
FLO1.16 - 116	72.71m²	777.51m³
FLO1.17 - 117	72.71m²	777.51m³
FLO1.18 - 118	72.71m²	777.51m³
FLO1.19 - 119	72.71m²	777.51m³
FLO1.20 - 120	72.71m²	777.51m³
FLO1.21 - 121	72.71m²	777.51m³
FLO1.22 - 122	72.71m²	777.51m³
FLO1.23 - 123	72.71m²	777.51m³
FLO1.24 - 124	72.71m²	777.51m³
FLO1.25 - 125	72.71m²	777.51m³
FLO1.26 - 126	72.71m²	777.51m³
FLO1.27 - 127	72.71m²	777.51m³
FLO1.28 - 128	72.71m²	777.51m³
FLO1.29 - 129	72.71m²	777.51m³
FLO1.30 - 130	72.71m²	777.51m³
FLO1.31 - 131	72.71m²	777.51m³
FLO1.32 - 132	72.71m²	777.51m³
FLO1.33 - 133	72.71m²	777.51m³
FLO1.34 - 134	72.71m²	777.51m³
FLO1.35 - 135	72.71m²	777.51m³
FLO1.36 - 136	72.71m²	777.51m³
FLO1.37 - 137	72.71m²	777.51m³
FLO1.38 - 138	72.71m²	777.51m³
FLO1.39 - 139	72.71m²	777.51m³
FLO1.40 - 140	72.71m²	777.51m³
FLO1.41 - 141	72.71m²	777.51m³
FLO1.42 - 142	72.71m²	777.51m³
FLO1.43 - 143	72.71m²	777.51m³
FLO1.44 - 144	72.71m²	777.51m³
FLO1.45 - 145	72.71m²	777.51m³
FLO1.46 - 146	72.71m²	777.51m³
FLO1.47 - 147	72.71m²	777.51m³
FLO1.48 - 148	72.71m²	777.51m³
FLO1.49 - 149	72.71m²	777.51m³
FLO1.50 - 150	72.71m²	777.51m³
FLO1.51 - 151	72.71m²	777.51m³
FLO1.52 - 152	72.71m²	777.51m³
FLO1.53 - 153	72.71m²	777.51m³
FLO1.54 - 154	72.71m²	777.51m³
FLO1.55 - 155	72.71m²	777.51m³
FLO1.56 - 156	72.71m²	777.51m³
FLO1.57 - 157	72.71m²	777.51m³
FLO1.58 - 158	72.71m²	777.51m³
FLO1.59 - 159	72.71m²	777.51m³
FLO1.60 - 160	72.71m²	777.51m³
FLO1.61 - 161	72.71m²	777.51m³
FLO1.62 - 162	72.71m²	777.51m³
FLO1.63 - 163	72.71m²	777.51m³
FLO1.64 - 164	72.71m²	777.51m³
FLO1.65 - 165	72.71m²	777.51m³
FLO1.66 - 166	72.71m²	777.51m³
FLO1.67 - 167	72.71m²	777.51m³
FLO1.68 - 168	72.71m²	777.51m³
FLO1.69 - 169	72.71m²	777.51m³
FLO1.70 - 170	72.71m²	777.51m³
FLO1.71 - 171	72.71m²	777.51m³
FLO1.72 - 172	72.71m²	777.51m³
FLO1.73 - 173	72.71m²	777.51m³
FLO1.74 - 174	72.71m²	777.51m³
FLO1.75 - 175	72.71m²	777.51m³
FLO1.76 - 176	72.71m²	777.51m³
FLO1.77 - 177	72.71m²	777.51m³
FLO1.78 - 178	72.71m²	777.51m³
FLO1.79 - 179	72.71m²	777.51m³
FLO1.80 - 180	72.71m²	777.51m³
FLO1.81 - 181	72.71m²	777.51m³
FLO1.82 - 182	72.71m²	777.51m³
FLO1.83 - 183	72.71m²	777.51m³
FLO1.84 - 184	72.71m²	777.51m³
FLO1.85 - 185	72.71m²	777.51m³
FLO1.86 - 186	72.71m²	777.51m³
FLO1.87 - 187	72.71m²	777.51m³
FLO1.88 - 188	72.71m²	777.51m³
FLO1.89 - 189	72.71m²	777.51m³
FLO1.90 - 190	72.71m²	777.51m³
FLO1.91 - 191	72.71m²	777.51m³
FLO1.92 - 192	72.71m²	777.51m³
FLO1.93 - 193	72.71m²	777.51m³
FLO1.94 - 194	72.71m²	777.51m³
FLO1.95 - 195	72.71m²	777.51m³
FLO1.96 - 196	72.71m²	777.51m³
FLO1.97 - 197	72.71m²	777.51m³
FLO1.98 - 198	72.71m²	777.51m³
FLO1.99 - 199	72.71m²	777.51m³
FLO1.100 - 200	72.71m²	777.51m³

7 The Old Oak, Bellway Homes, 150-155, 156-157, 158-159, 160-161, 162-163, 164-165, 166-167, 168-169, 170-171, 172-173, 174-175, 176-177, 178-179, 180-181, 182-183, 184-185, 186-187, 188-189, 190-191, 192-193, 194-195, 196-197, 198-199, 200-201, 202-203, 204-205, 206-207, 208-209, 210-211, 212-213, 214-215, 216-217, 218-219, 220-221, 222-223, 224-225, 226-227, 228-229, 230-231, 232-233, 234-235, 236-237, 238-239, 240-241, 242-243, 244-245, 246-247, 248-249, 250-251, 252-253, 254-255, 256-257, 258-259, 260-261, 262-263, 264-265, 266-267, 268-269, 270-271, 272-273, 274-275, 276-277, 278-279, 280-281, 282-283, 284-285, 286-287, 288-289, 290-291, 292-293, 294-295, 296-297, 298-299, 300-301, 302-303, 304-305, 306-307, 308-309, 310-311, 312-313, 314-315, 316-317, 318-319, 320-321, 322-323, 324-325, 326-327, 328-329, 330-331, 332-333, 334-335, 336-337, 338-339, 340-341, 342-343, 344-345, 346-347, 348-349, 350-351, 352-353, 354-355, 356-357, 358-359, 360-361, 362-363, 364-365, 366-367, 368-369, 370-371, 372-373, 374-375, 376-377, 378-379, 380-381, 382-383, 384-385, 386-387, 388-389, 390-391, 392-393, 394-395, 396-397, 398-399, 400-401, 402-403, 404-405, 406-407, 408-409, 410-411, 412-413, 414-415, 416-417, 418-419, 420-421, 422-423, 424-425, 426-427, 428-429, 430-431, 432-433, 434-435, 436-437, 438-439, 440-441, 442-443, 444-445, 446-447, 448-449, 450-451, 452-453, 454-455, 456-457, 458-459, 460-461, 462-463, 464-465, 466-467, 468-469, 470-471, 472-473, 474-475, 476-477, 478-479, 480-481, 482-483, 484-485, 486-487, 488-489, 490-491, 492-493, 494-495, 496-497, 498-499, 500-501, 502-503, 504-505, 506-507, 508-509, 510-511, 512-513, 514-515, 516-517, 518-519, 520-521, 522-523, 524-525, 526-527, 528-529, 530-531, 532-533, 534-535, 536-537, 538-539, 540-541, 542-543, 544-545, 546-547, 548-549, 550-551, 552-553, 554-555, 556-557, 558-559, 560-561, 562-563, 564-565, 566-567, 568-569, 570-571, 572-573, 574-575, 576-577, 578-579, 580-581, 582-583, 584-585, 586-587, 588-589, 590-591, 592-593, 594-595, 596-597, 598-599, 600-601, 602-603, 604-605, 606-607, 608-609, 610-611, 612-613, 614-615, 616-617, 618-619, 620-621, 622-623, 624-625, 626-627, 628-629, 630-631, 632-633, 634-635, 636-637, 638-639, 640-641, 642-643, 644-645, 646-647, 648-649, 650-651, 652-653, 654-655, 656-657, 658-659, 660-661, 662-663, 664-665, 666-667, 668-669, 670-671, 672-673, 674-675, 676-677, 678-679, 680-681, 682-683, 684-685, 686-687, 688-689, 690-691, 692-693, 694-695, 696-697, 698-699, 700-701, 702-703, 704-705, 706-707, 708-709, 710-711, 712-713, 714-715, 716-717, 718-719, 720-721, 722-723, 724-725, 726-727, 728-729, 730-731, 732-733, 734-735, 736-737, 738-739, 740-741, 742-743, 744-745, 746-747, 748-749, 750-751, 752-753, 754-755, 756-757, 758-759, 760-761, 762-763, 764-765, 766-767, 768-769, 770-771, 772-773, 774-775, 776-777, 778-779, 780-781, 782-783, 784-785, 786-787, 788-789, 790-791, 792-793, 794-795, 796-797, 798-799, 800-801, 802-803, 804-805, 806-807, 808-809, 810-811, 812-813, 814-815, 816-817, 818-819, 820-821, 822-823, 824-825, 826-827, 828-829, 830-831, 832-833, 834-835, 836-837, 838-839, 840-841, 842-843, 844-845, 846-847, 848-849, 850-851, 852-853, 854-855, 856-857, 858-859, 860-861, 862-863, 864-865, 866-867, 868-869, 870-871, 872-873, 874-875, 876-877, 878-879, 880-881, 882-883, 884-885, 886-887, 888-889, 890-891, 892-893, 894-895, 896-897, 898-899, 900-901, 902-903, 904-905, 906-907, 908-909, 910-911, 912-913, 914-915, 916-917, 918-919, 920-921, 922-923, 924-925, 926-927, 928-929, 930-931, 932-933, 934-935, 936-937, 938-939, 940-941, 942-943, 944-945, 946-947, 948-949, 950-951, 952-953, 954-955, 956-957, 958-959, 960-961, 962-963, 964-965, 966-967, 968-969, 970-971, 972-973, 974-975, 976-977, 978-979, 980-981, 982-983, 984-985, 986-987, 988-989, 990-991, 992-993, 994-995, 996-997, 998-999, 1000-1001, 1002-1003, 1004-1005, 1006-1007, 1008-1009, 1010-1011, 1012-1013, 1014-1015, 1016-1017, 1018-1019, 1020-1021, 1022-1023, 1024-1025, 1026-1027, 1028-1029, 1030-1031, 1032-1033, 1034-1035, 1036-1037, 1038-1039, 1040-1041, 1042-1043, 1044-1045, 1046-1047, 1048-1049, 1050-1051, 1052-1053, 1054-1055, 1056-1057, 1058-1059, 1060-1061, 1062-1063, 1064-1065, 1066-1067, 1068-1069, 1070-1071, 1072-1073, 1074-1075, 1076-1077, 1