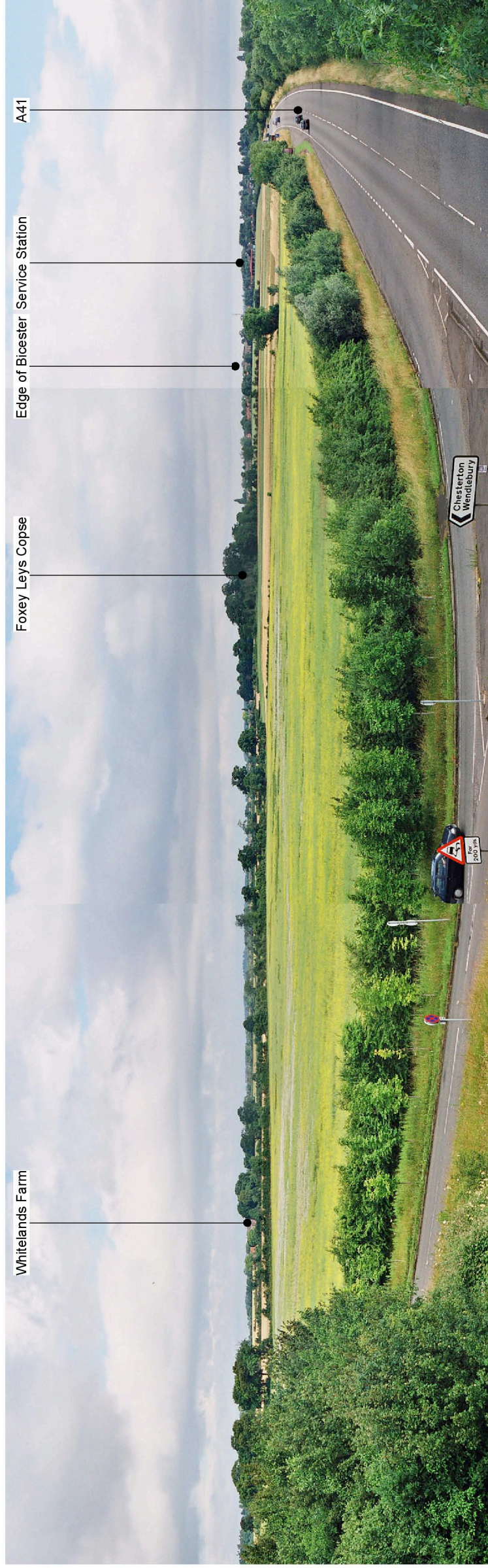




Winter

View 1 - From the flyover on the A41 near junction to Chesterton looking north across the site towards Bicester.



Summer

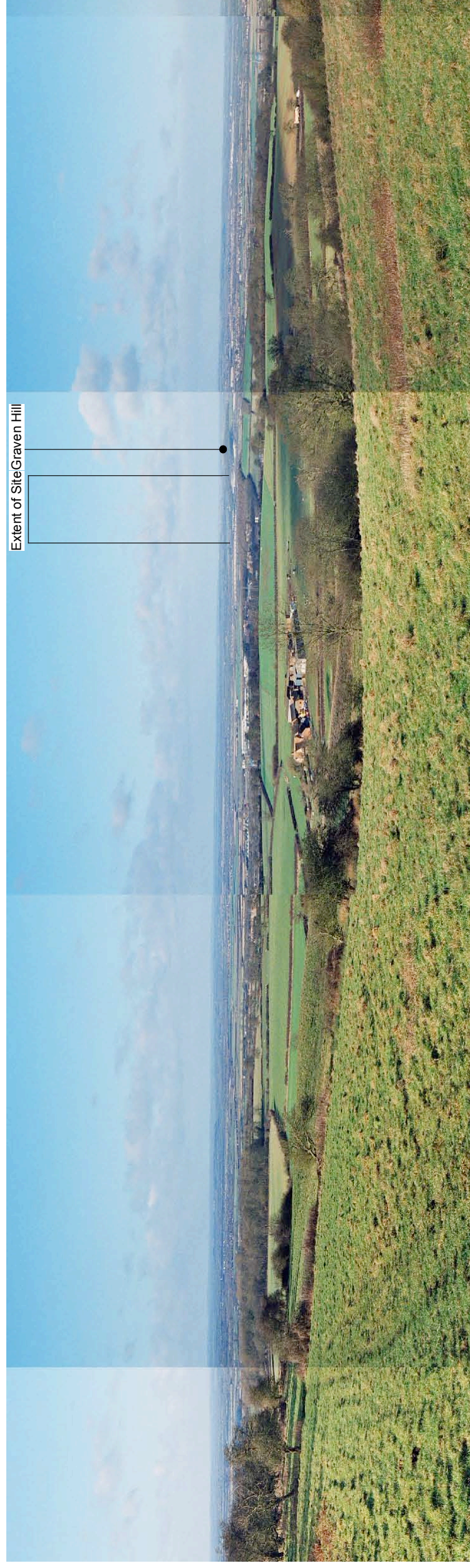
View 1 - From the flyover on the A41 near junction to Chesterton looking north across the site towards Bicester.



Winter
View 2 - From the A4095 looking south west towards the junction with B4030 and north western corner of the site.



Summer
View 2 - From the A4095 looking south west towards the junction with B4030 and north western corner of the site.



Winter

View 3 - From Public Right of Way south of Middle Farm on Muswell Hill looking north west towards the site and Bicester.



Summer

View 3 - From Public Right of Way south of Middle Farm on Muswell Hill looking north west towards the site and Bicester.



Winter
View 4 - View looking north west towards the site and Bicester from Public Right of Way south of Gardener's Barn in Horton-Cum-Studley.



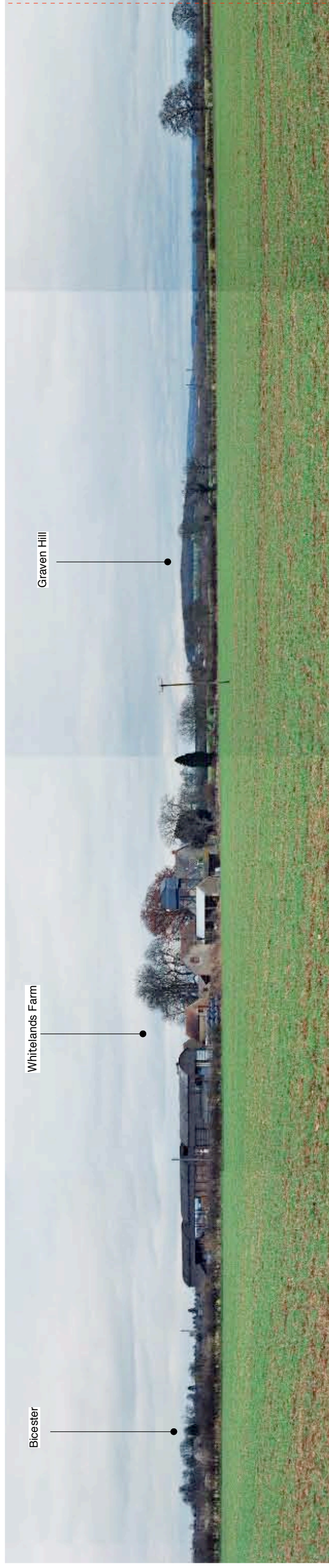
Summer
View 4 - View looking north west towards the site and Bicester from Public Right of Way south of Gardener's Barn in Horton-Cum-Studley.



Summer
View 5 - Panoramic view from Public Right of Way looking towards Whitelands Farm & Chesterton.



View 5 Continued

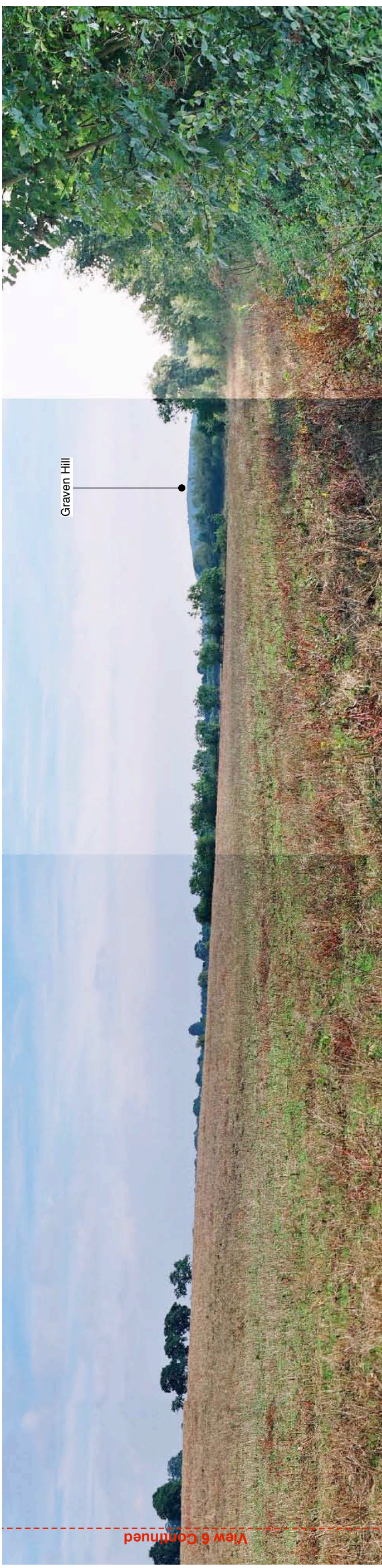


Winter
View 5 - Panoramic view from Public Right of Way looking towards Whitelands Farm & Chesterton.



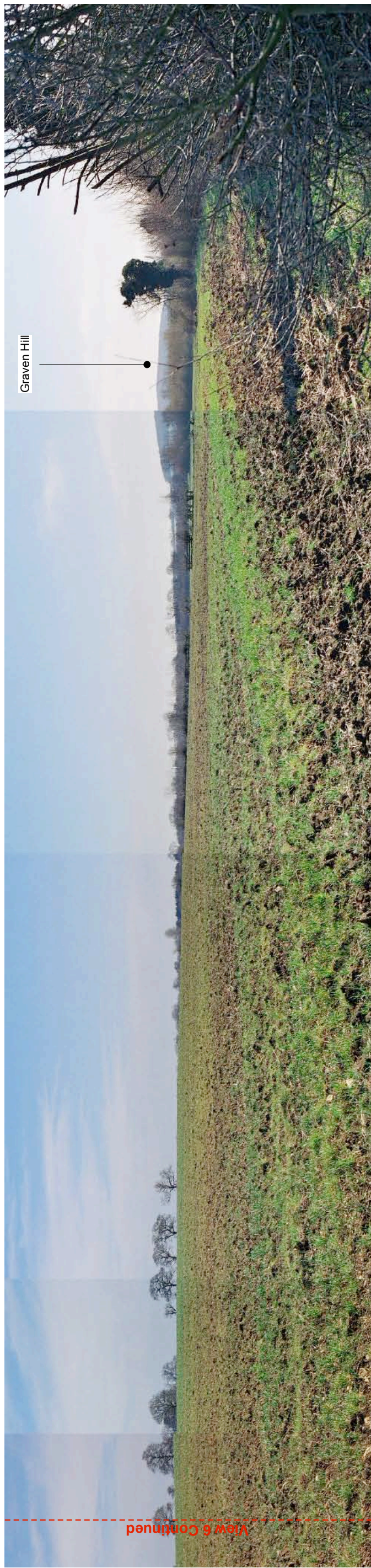


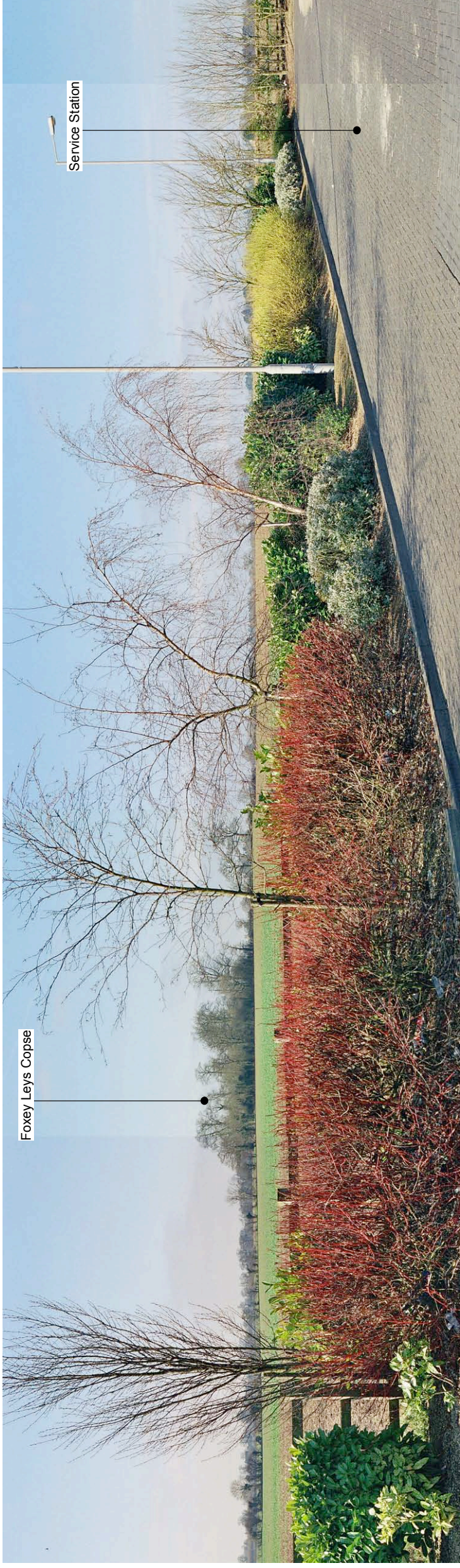
Summer
View 6 - Panoramic view from the southern boundary of the site by lay-by looking north towards Whitelands Farm and Bicester.





Winter
View 6 - Panoramic view from the southern boundary of the site by lay-by looking north towards Whitelands Farm and Bicester.





Winter
View 7 - From the A41 Service Station looking south west towards Whitelands Farm.



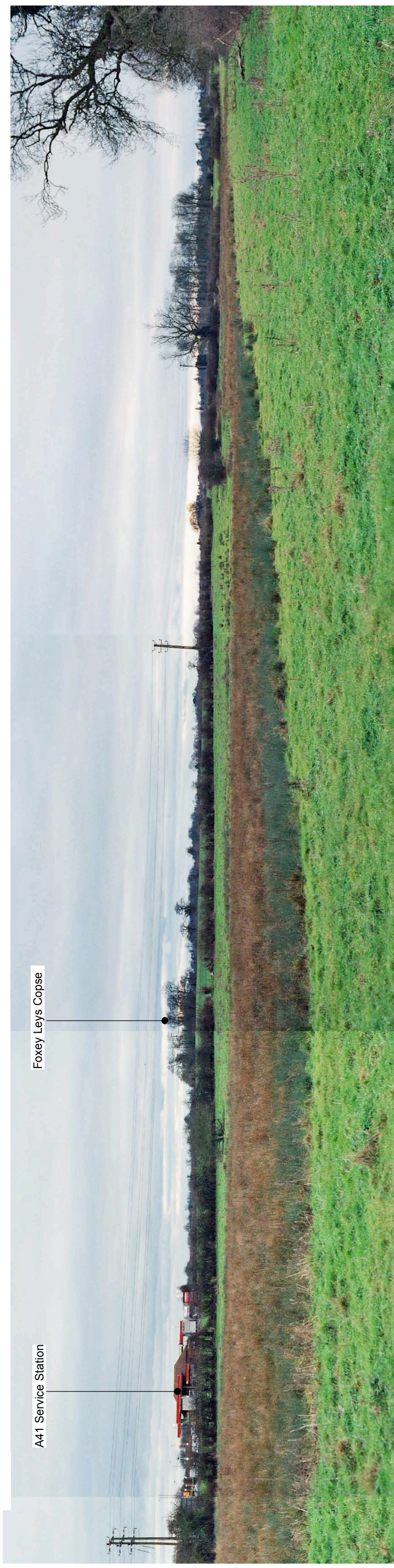
Summer
View 7 - From the A41 Service Station looking south west towards Whitelands Farm.



Winter
View 8 - From Alchester Road looking across Chesterton School looking north towards the site.



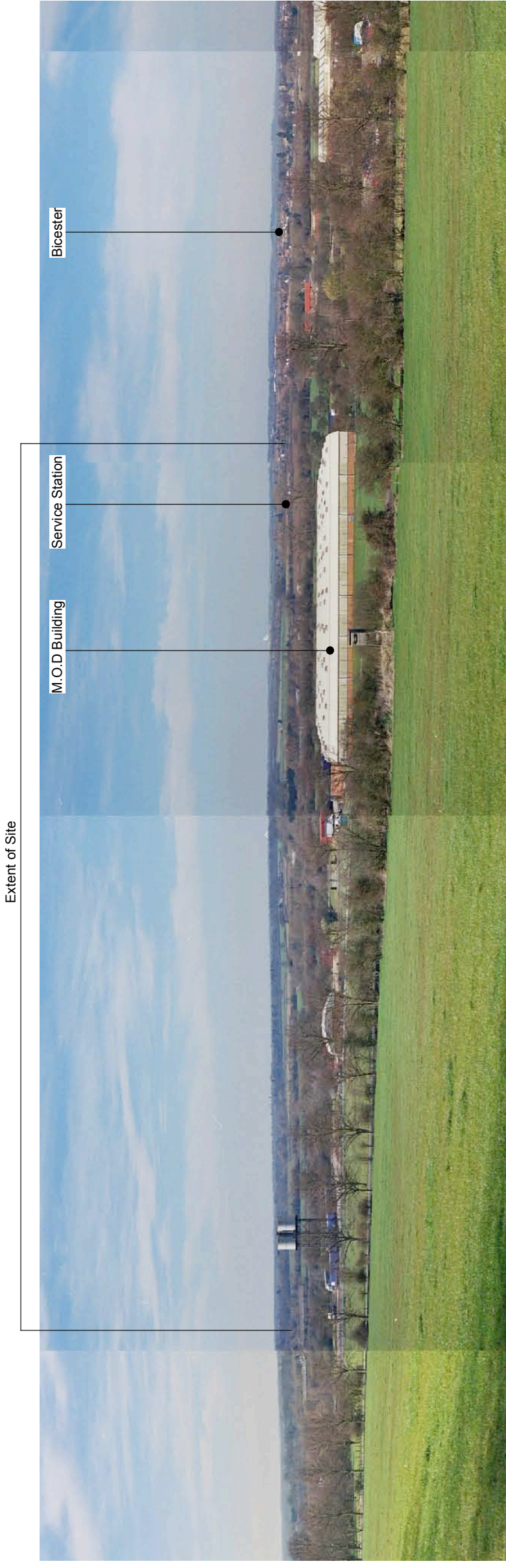
Winter
View 9 - View from overbridge on M40 looking south east towards Bignell Park and the site.



Winter
View 10 - From the eastern corner of the site looking south west across Pingle Brook, towards Whitelands Farm and the service station.



Summer
View 10 - From the eastern corner of the site looking south west across Pingle Brook, towards Whitelands Farm and the service station.



Winter
View 11 - From Graven Hill looking north west towards the site and Bicester.

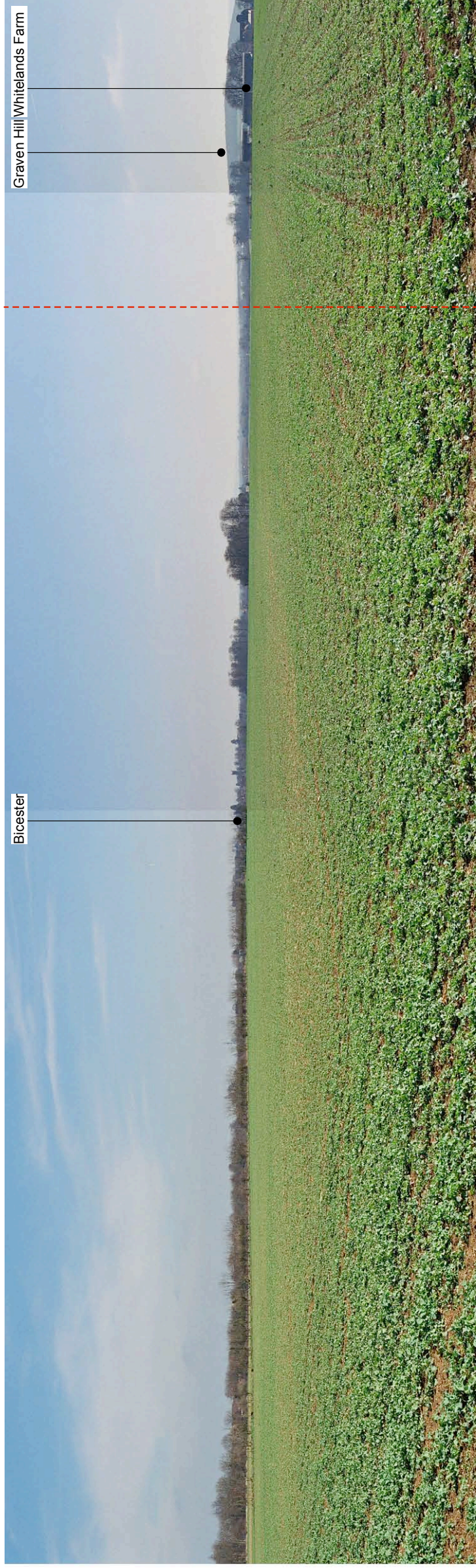


Winter
View 12 - From pavement on Kings End, looking south west towards one edge of the site.

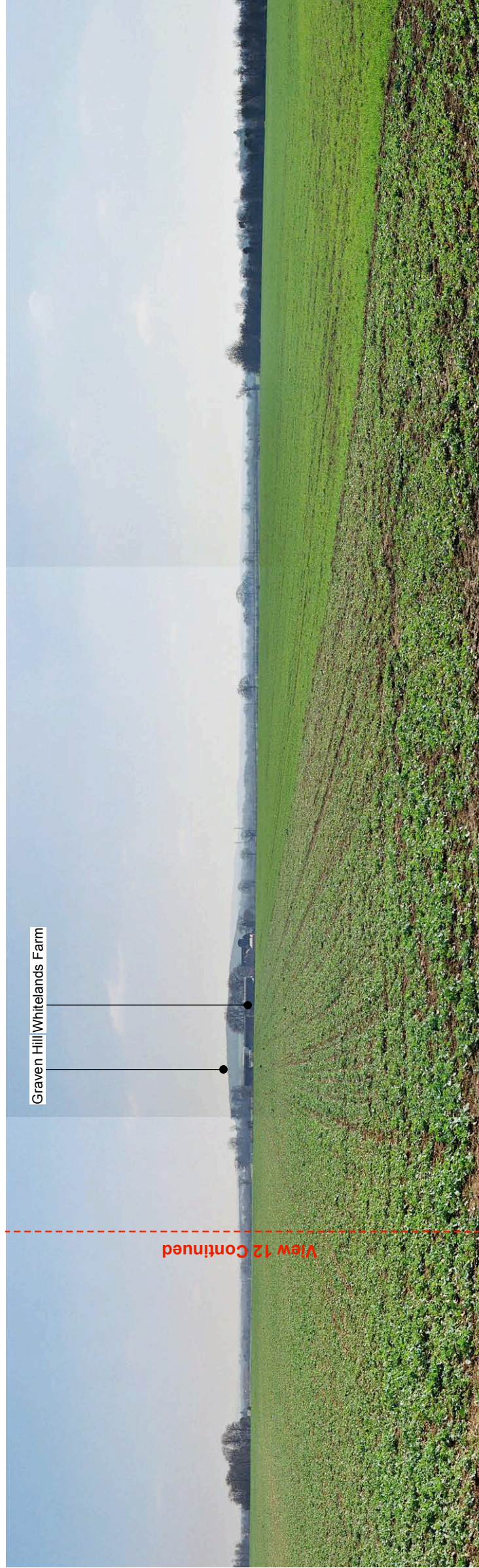


Summer
View 13 - From the western boundary of the site adjacent to the A4095 looking east towards Whitelands Farm





Winter
View 13 - From the western boundary of the site adjacent to the A4095 looking east towards Whitelands Farm and Bicester.

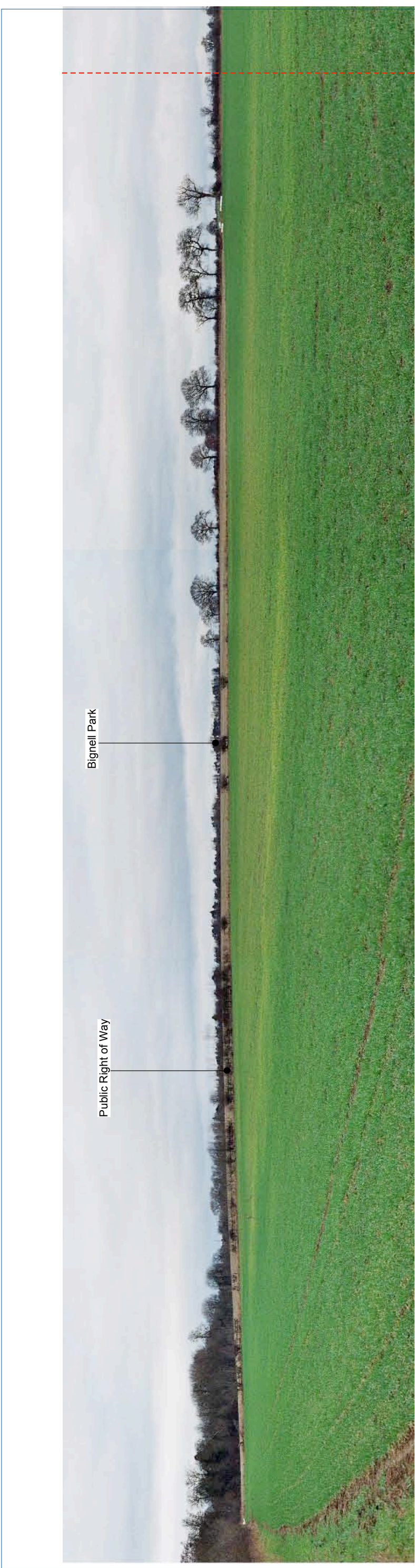


Winter
View 13 - Continued from the western boundary of site adjacent to the A4095 looking east towards Whitelands Farm and Graven Hill.



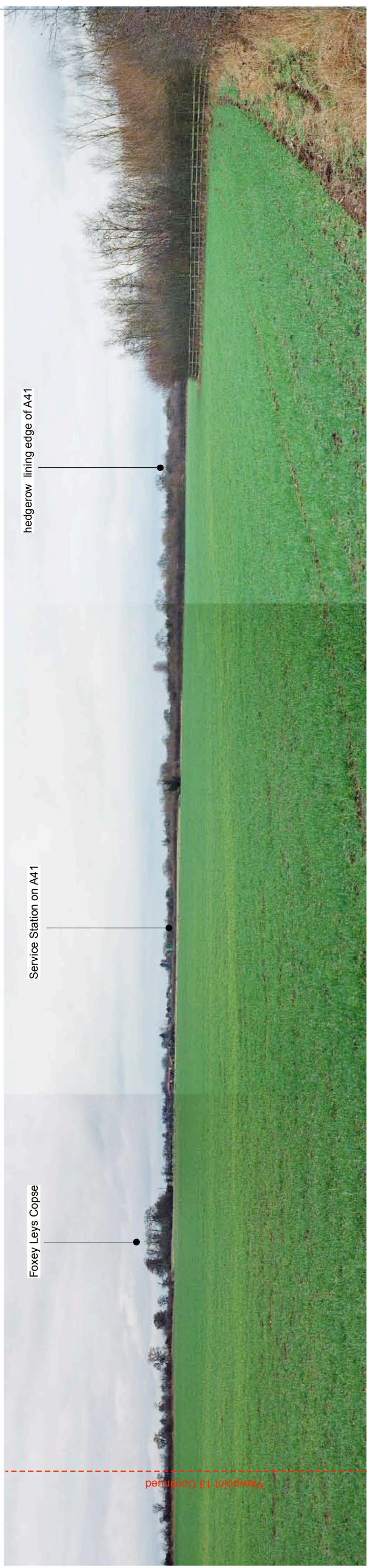
Summer
View 14 - Panoramic view from southern boundary of the site looking west & north towards Whitelands Farm and Bicester.





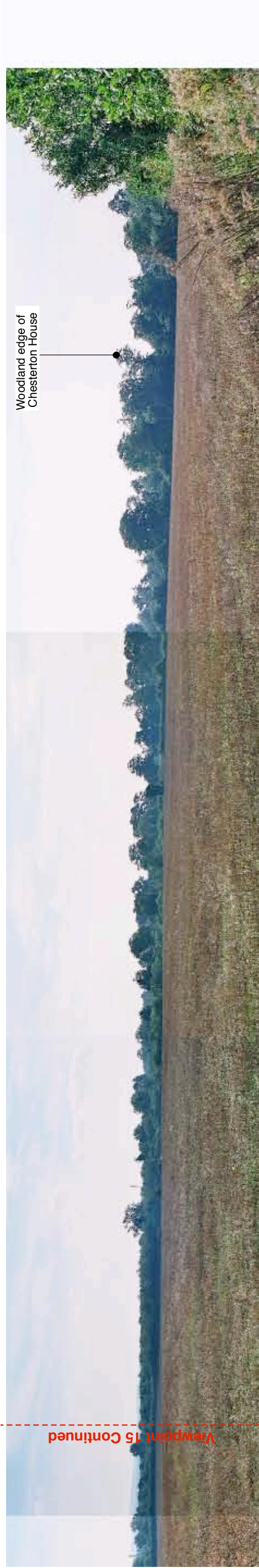
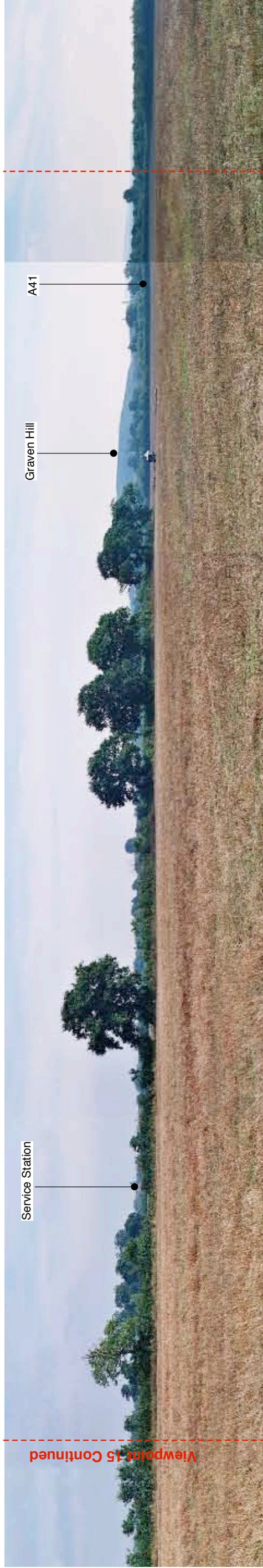
Winter

View 14 - From southern boundary of the site looking west & north towards Whitelands Farm and Bicester.



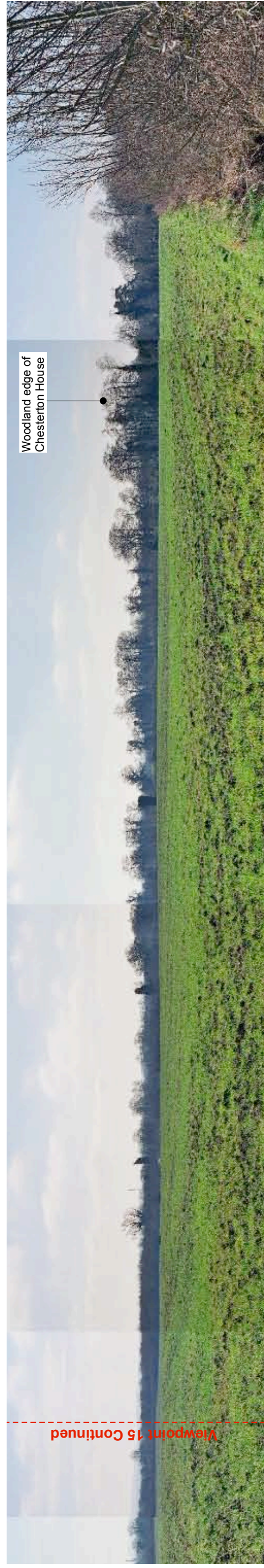
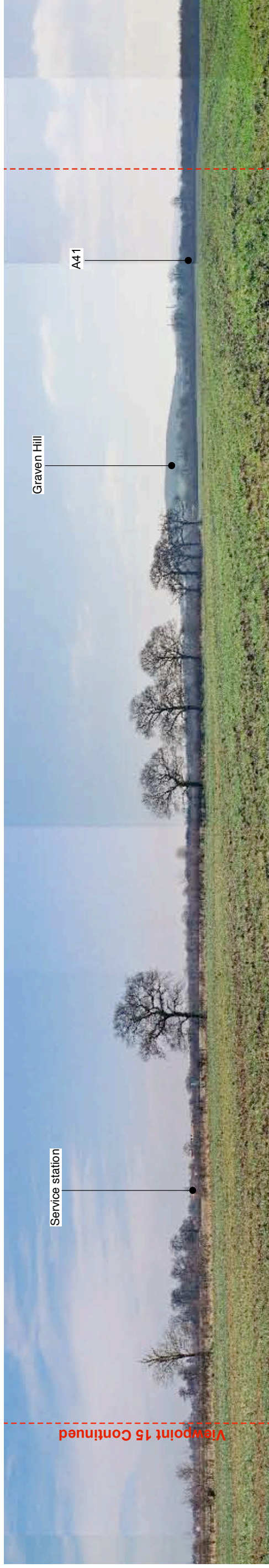


Summer
View 15 - Panoramic view from central location within the site.





Winter
View 15 - Panoramic view from central location within the site.





Winter

View 16 - From the southern edge of Bicester town looking south west towards the site.

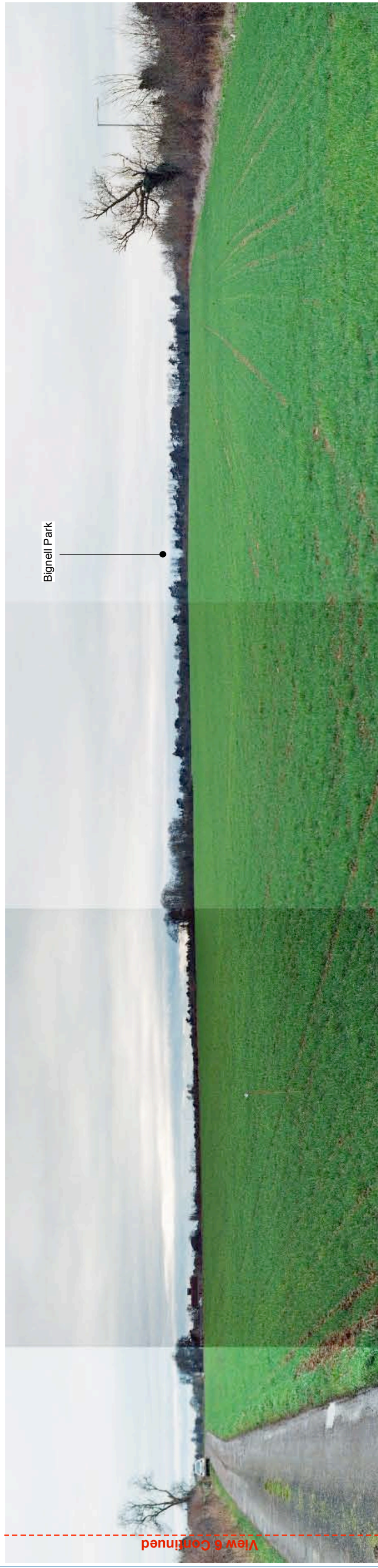


Summer

View 16 - From the southern edge of Bicester town looking southwest towards the site.



Winter
View 17 - Panoramic view from the farm track leading to Whitelands Farm.



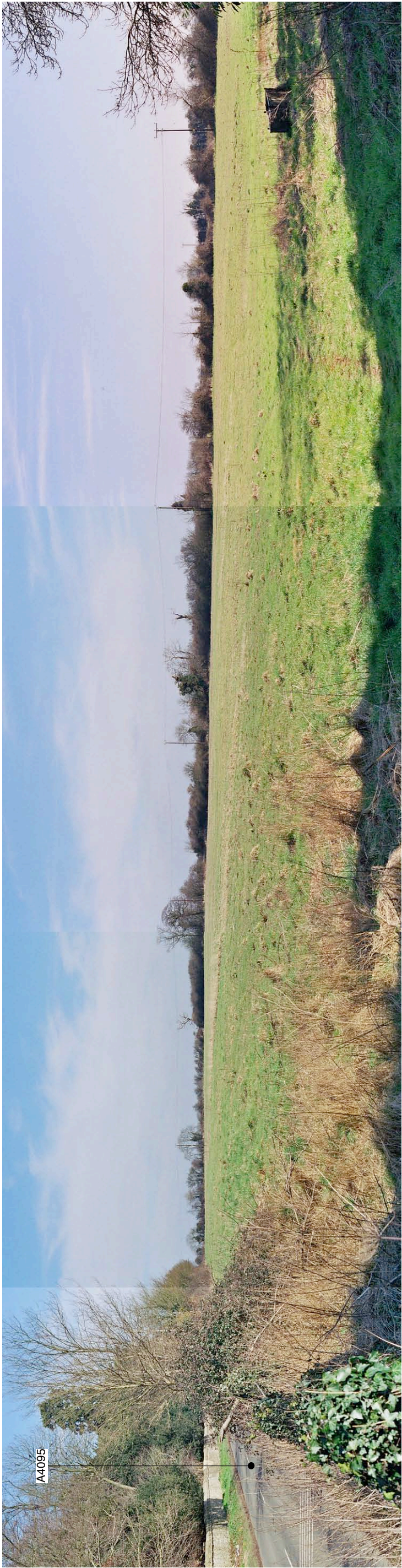
View 8 Continued



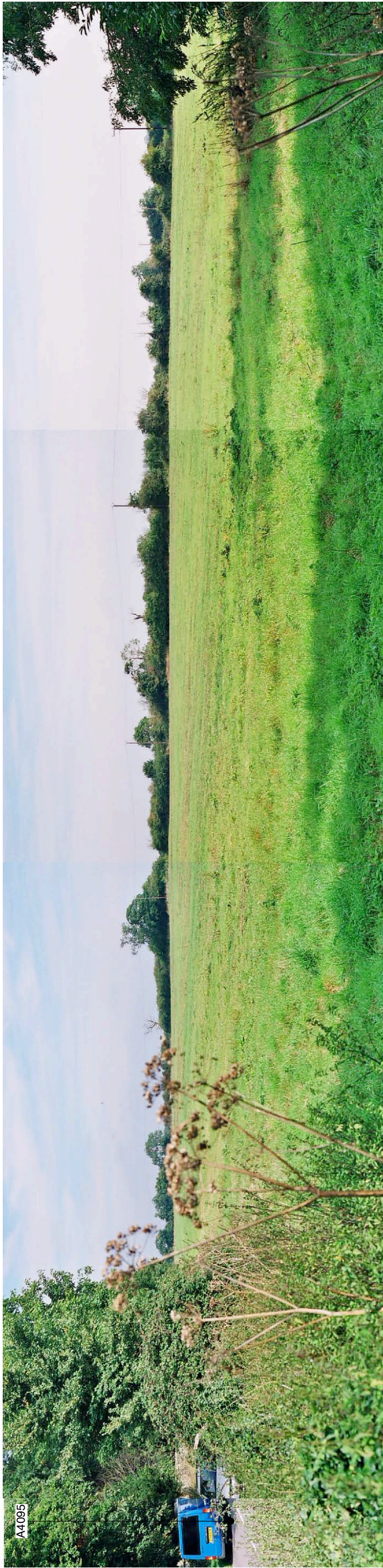
Winter
View 18 - From A4095 looking south east towards the site.



Summer
View 18 - From A4095 looking south east towards the site.



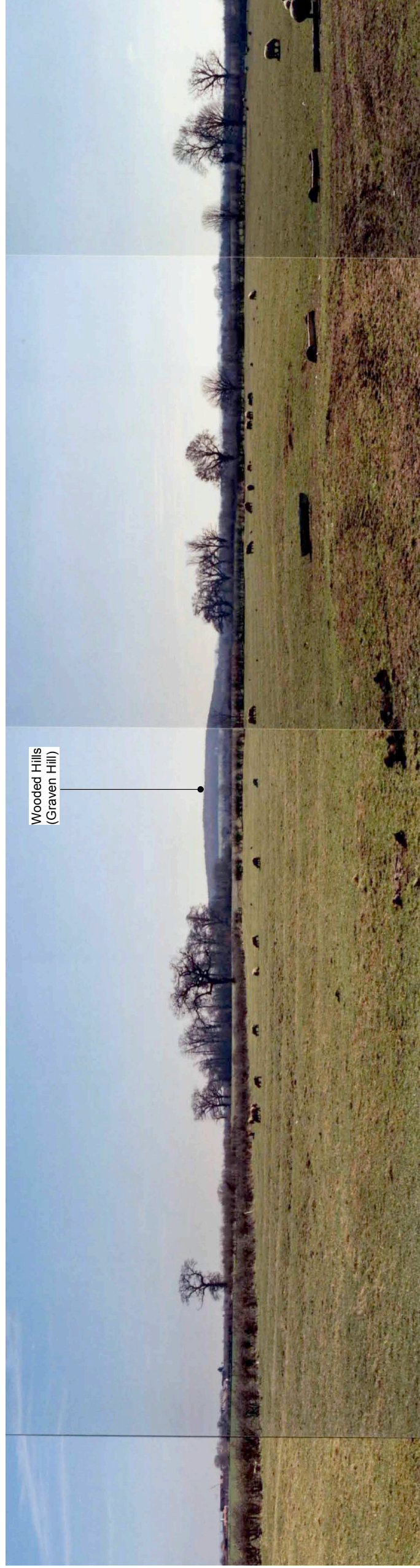
Winter
View 19 - From the Public Right of Way close to the A4095 looking northeast towards the western boundary of the site and Whitelands Farm



Summer
View 19 - From the Public Right of Way close to the A4095 looking northeast towards the western boundary of the site and Whitelands Farm



Landscape Character Type C1 - Wooded Estate Land



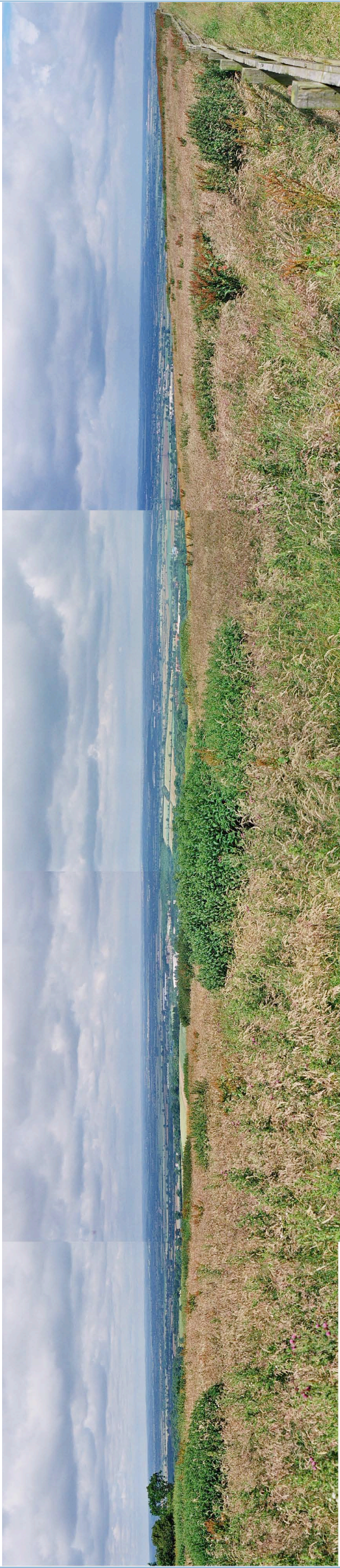
Landscape Character Type C3 - Wooded Hills



Landscape Character Type C4 - Clay Vale



Landscape Character Type C5 - Alluvial Lowlands



Landscape Character Area C10 - Midvale Ridge



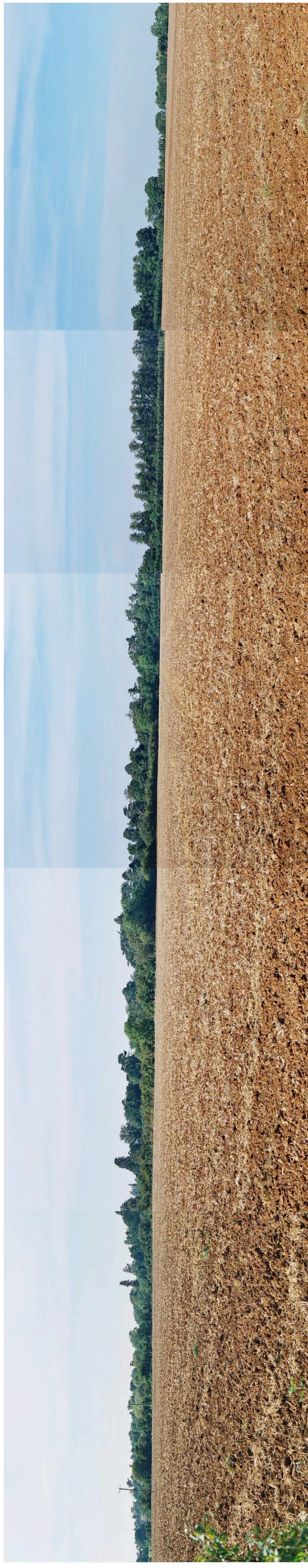
Landscape Character Type C11 - Urban Fringe



Landscape Character Sub-Area C1a - Bignell Park



Landscape Character Sub-Area 1b - Bignell Golf Course/Leisure



Landscape Character Sub-Area C1a - Bignell Park, View from site