


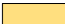

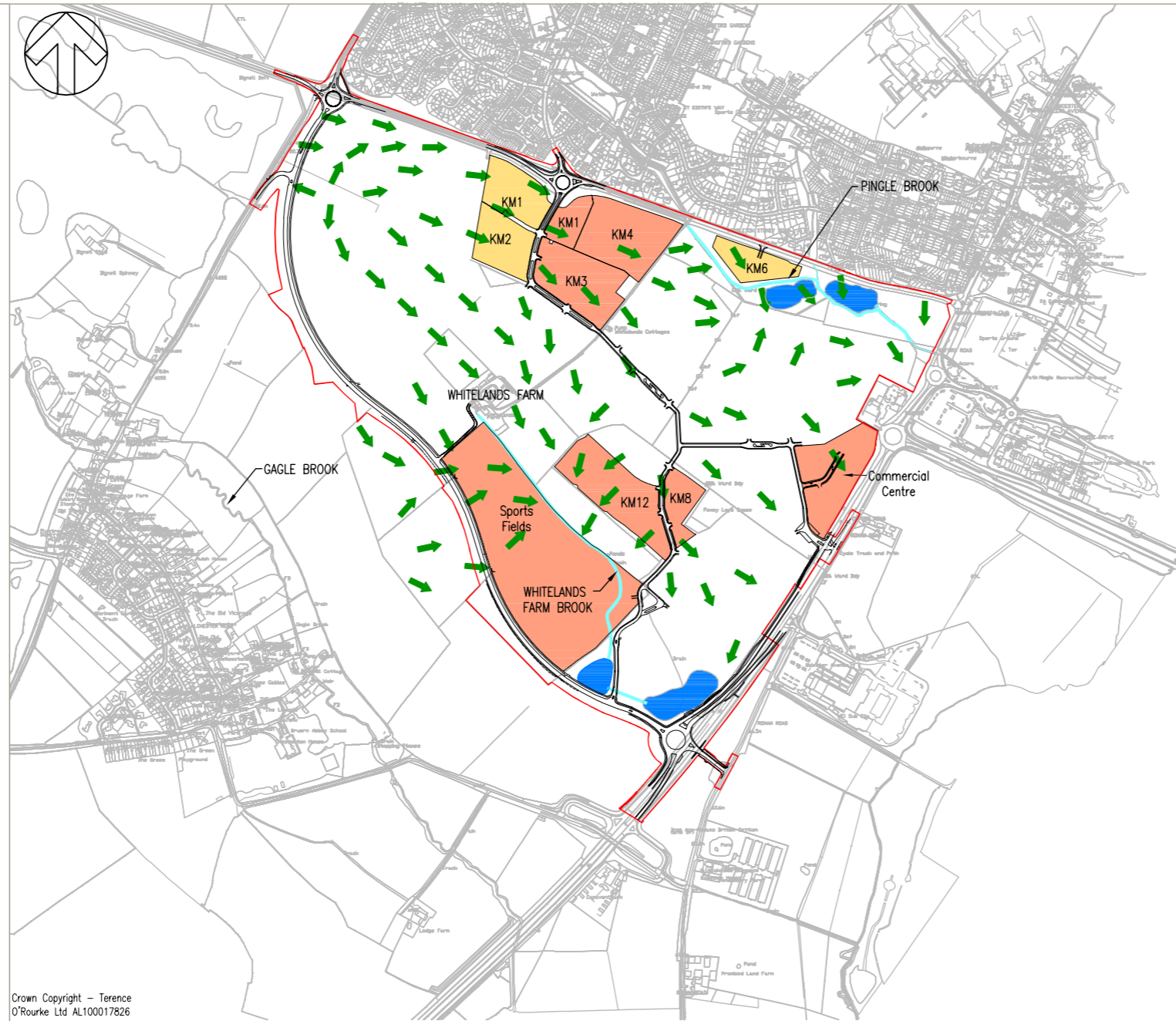


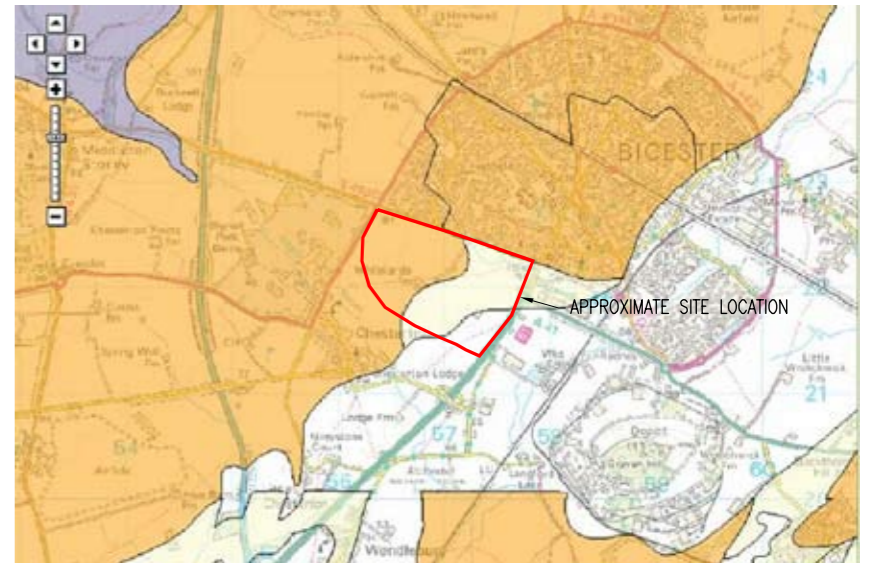
-  SITE SURFACE WATER FLOW DIRECTION
-  WATERCOURSES
-  STORAGE PONDS
-  DEVELOPMENT PARCEL CONSTRUCTED
-  DEVELOPMENT PARCEL UNDER-CONSTRUCTION

- NOTES
1. AQUIFER MAPS AND GROUNDWATER VULNERABILITY MAPS ARE TAKEN FROM THE ENVIRONMENT AGENCY WEBSITE (www.environment-agency.gov.uk) AND HAVE NOT BEEN PRODUCED BY WSP.
 2. CONSTRUCTION STATUS OF DEVELOPMENT PARCELS CORRECT ON 30/07/12.



Crown Copyright - Terence O'Rourke Ltd AL100017826

ENVIRONMENT AGENCY GROUNDWATER VULNERABILITY



KEY

-  Major Aquifer High
-  Major Aquifer Intermediate
-  Major Aquifer Low
-  Minor Aquifer High
-  Minor Aquifer Intermediate
-  Minor Aquifer Low

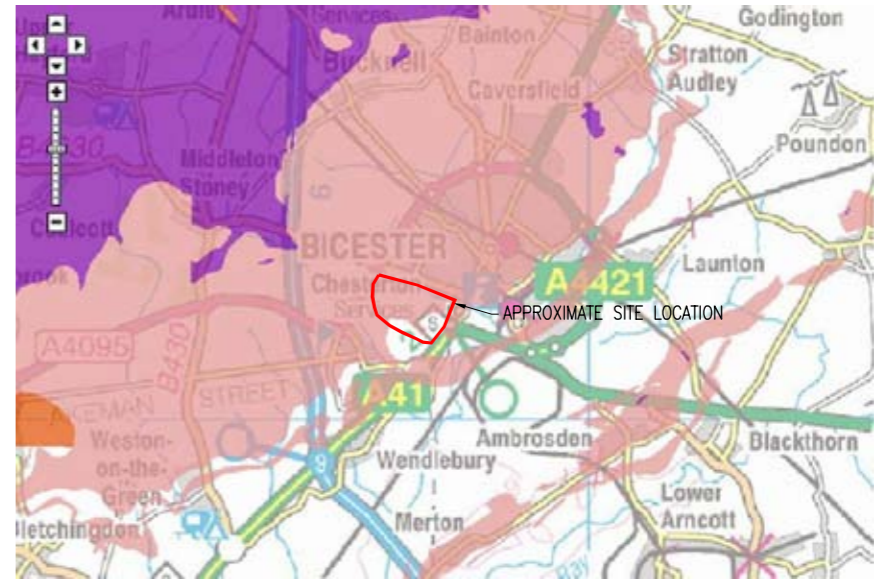
ENVIRONMENT AGENCY AQUIFER MAP - BEDROCK DESIGNATION



KEY

-  Principal
-  Secondary A
-  Secondary B
-  Secondary (undifferentiated)
-  Unknown (Isles and Landlip)

ENVIRONMENT AGENCY AQUIFER MAP - SUPERFICIAL DEPOSITS DESIGNATION



KEY

-  Principal
-  Secondary A
-  Secondary B
-  Secondary (undifferentiated)

Figure 7.4 Environment Agency aquifer and groundwater information

Not to scale

