



Exstg. brick in glass house with sample selected salvaged red stock bricks :

Slate roofs with sample salvaged slate :

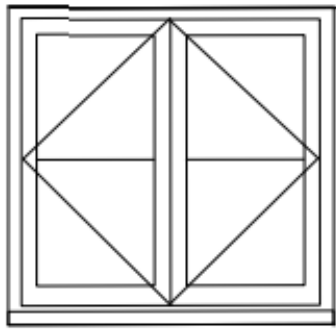


Exstg. stable doors –

Sample of traditional painted timber split stable door replacement

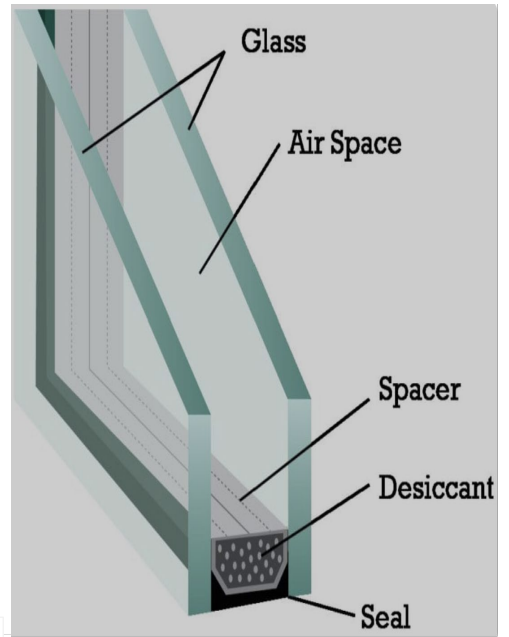
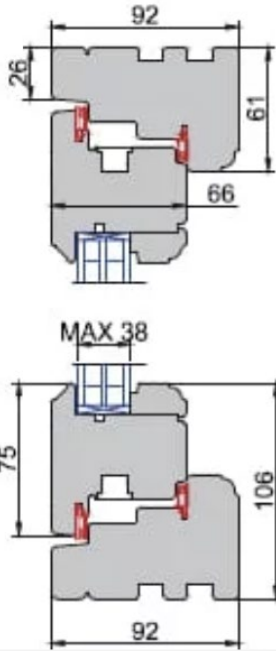
Joinery - Door & Window Details :

915



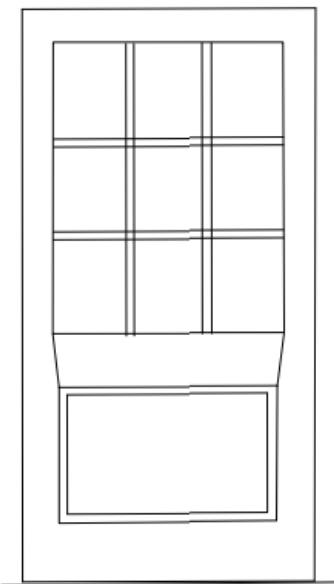
WG.02
WG.03
WG.04

765



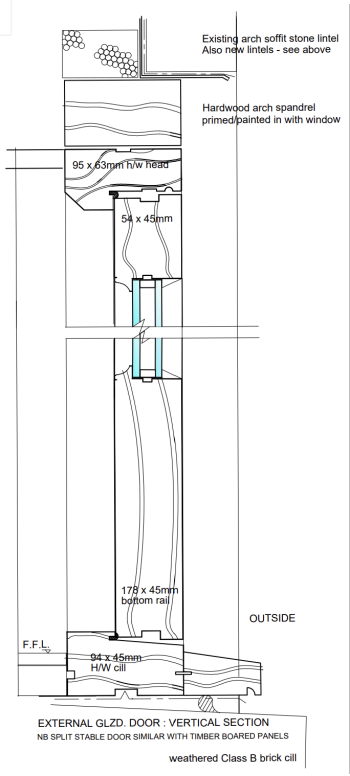
Timber section with Heritage 14mm d/g unit

1025

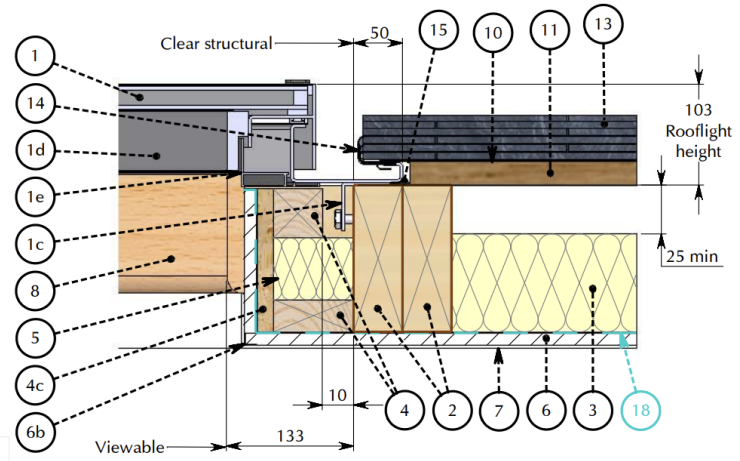


DG.02 (greenhouse)

1995



Metal top hinged Conservation Rooflight



1 Factory applied micro-porous coatings providing maximum protection but minimal maintenance

All of our windows and doors are factory painted prior to assembly, providing complete protection from moisture absorption and maximising longevity. Every product receives a base coat of timber preservative, then a primer coat, followed by two coats of micro-porous paint. You should expect our coatings to last from five to eight years without the need for re-treatment. Should you wish to change the colour of your windows then redecoration is a very simple task as there is no sanding down required. An average window should take about thirty minutes to redecorate.

2 Internal beads for security

Glass is fitted from room side to prohibit would-be intruders from gaining entry by removing the glass.

3 Neat, coloured silicone seals

Purpose-made grooves on the inside and outside of the window receive the silicone necessary to protect against water ingress. Appropriate coloured or clear silicone is factory applied, guaranteeing a perfect, unobtrusive seal.

4 Ventilation channels help prevent double-glazing from misting

Ventilation channels protect against the failure of double glazed units. In standard systems misting can occur when glazing units are allowed to sit in water trapped within the frame.

5 Multi-layer timber sections with opposing grains, balances warping and combats twisting

The use of multi-layer timber for windows and doors is long established in Scandinavia and Northern Europe, but very rare in Britain. The multi-layer structure used as standard throughout our range is particularly effective in resisting warping and twisting, as the opposing grains even out natural moisture movement. It is the twisting of timber during wet weather, more than the swelling itself, which causes standard wooden windows and doors to stick.

6 Glazing units almost twice as effective as ordinary double glazing

All of our windows and doors incorporate double-glazed units with enhanced thermally insulating glass, providing an extremely low U-value. We further improve the efficiency of the unit by filling the cavity with argon gas and using low conductivity spacer bars to minimise edge losses. The result is a 1.1 W/m²K centre pane U-value. This means an 80% increase in energy savings compared to single glazing, and a 45% increase in energy savings compared to ordinary double-glazing.

7 Exceptional optical clarity

Advanced glass technology not only provides enhanced thermal performance but also much improved clarity, particularly compared to traditional hard coated low e glasses. High light transmittance (77%) maximises the entry of natural light into the home.

8 Warm edge spacer bars

Low conductivity spacer bars help to minimise heat loss and combat condensation levels on the inner pane.

9 Rebated glazing beads eliminate unsightly gaps between the frame and bead

In standard timber systems, paint is prone to cracking at the point where the bead meets the window frame. By rebating the glazing bead over the sash we conceal the joint, which eliminates the problem.

10 Security

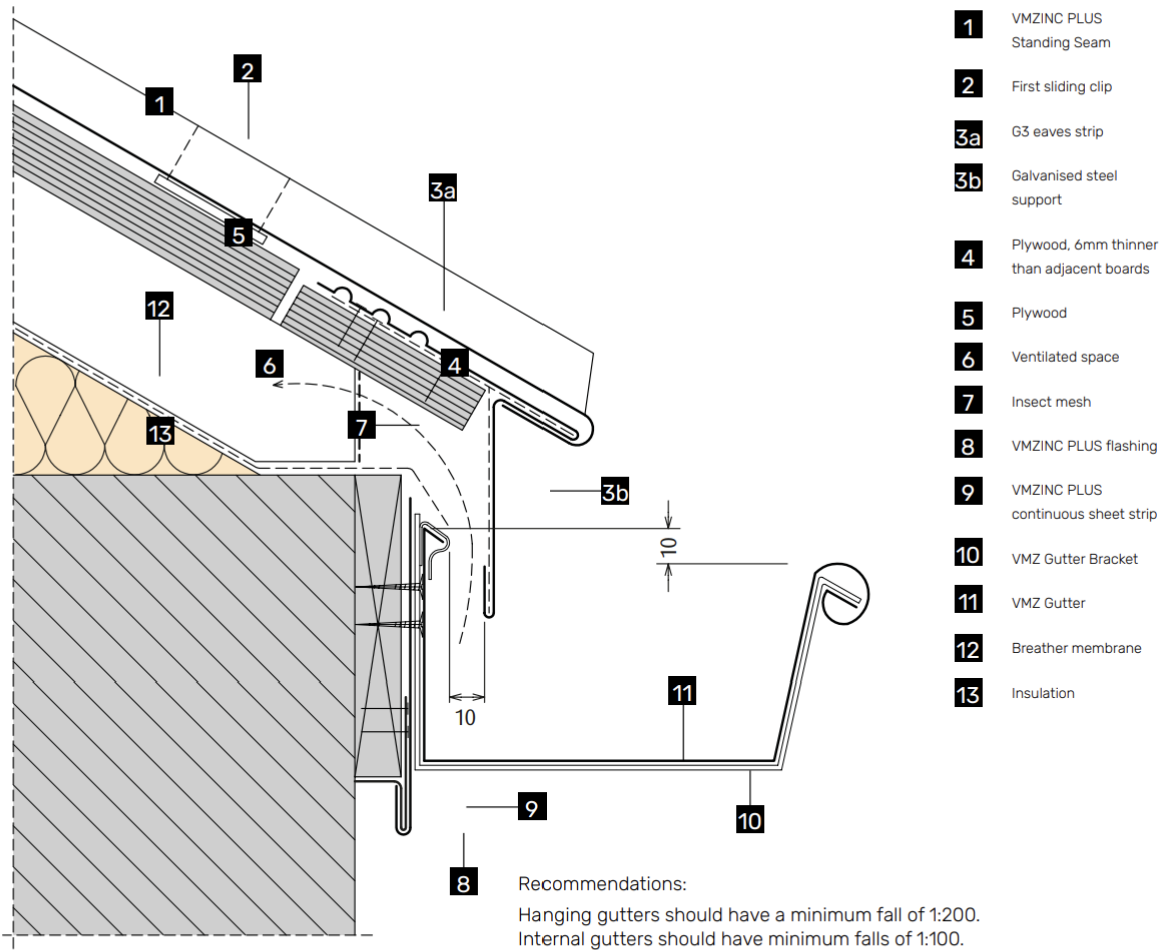
All Timber Windows are fitted with advanced security locks that wrap around the openers on our Flush Casements and engage bolts in multiple points on our Lipped Casements. Doors are fitted with multi-point locking mechanisms, featuring hook-bolts and deadlock.



Cedar Lodge North Side Steeple Aston

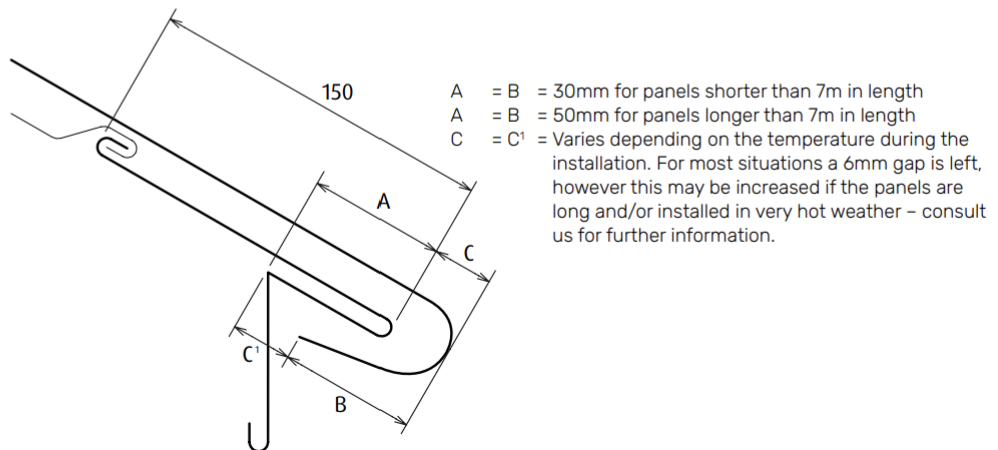
Zinc Roof Eaves Detail :

All dimensions in mm



Managing thermal movement

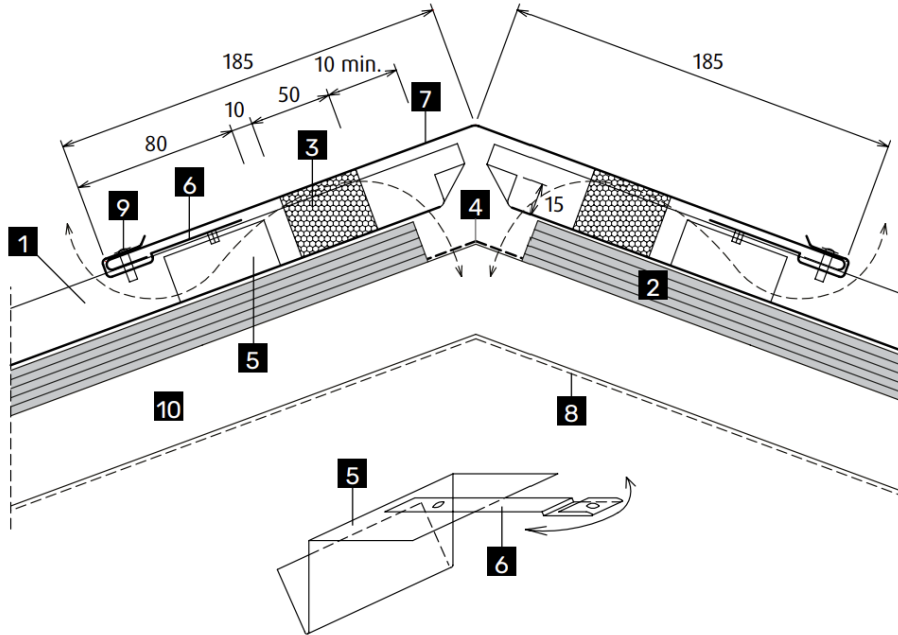
All dimensions in mm



Cedar Lodge North Side Steeple Aston

Zinc Roof Ridge Detail :

All dimensions in mm



- 1** VMZINC PLUS Standing Seam
- 2** Plywood
- 3** Compression strip G3
- 4** Insect mesh
- 5** VMZINC Ridge Clip G3 (fixed part)
- 6** VMZINC Ridge Clip G3 (moving part)
- 7** VMZINC Ridge G3
- 8** VMZINC Membrane
- 9** Clip fixing in accordance with the specification
- 10** Ventilated space



Brett Martin 'Cascade' Cast style r/w goods