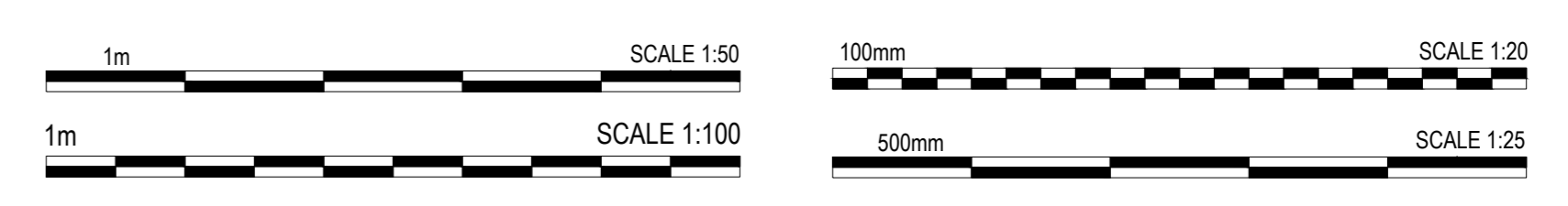
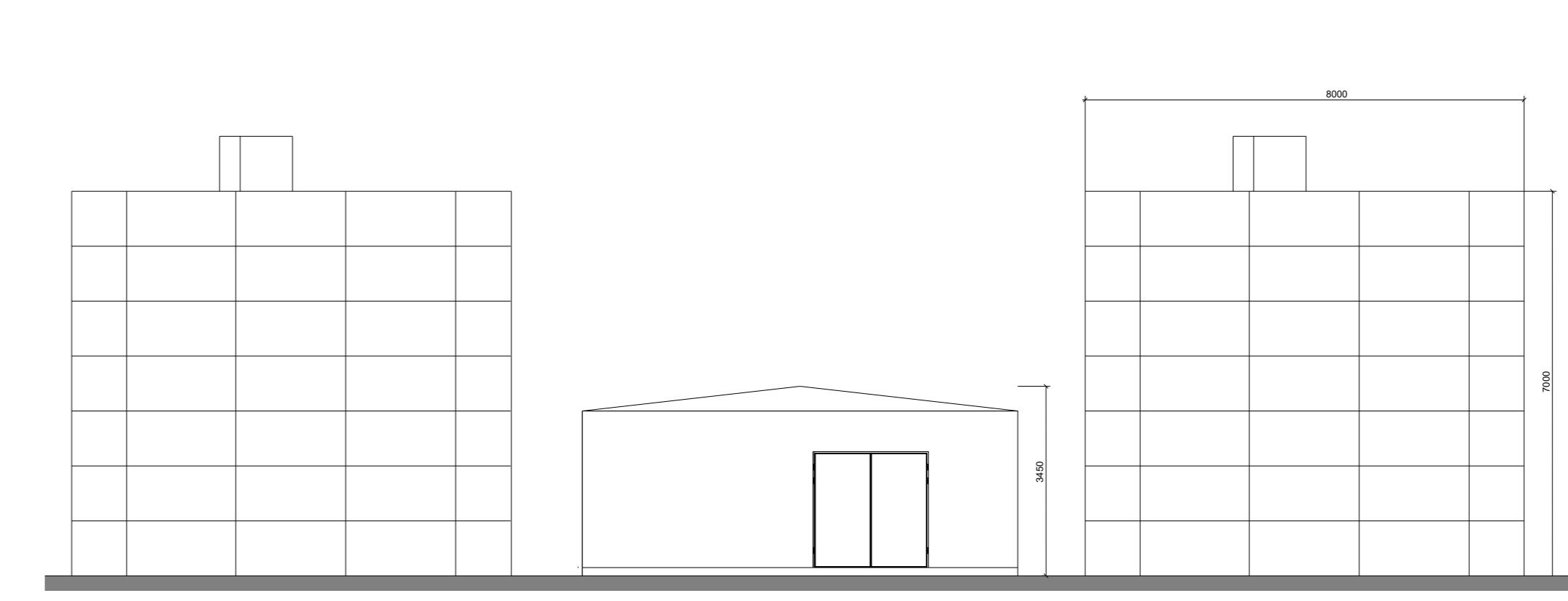
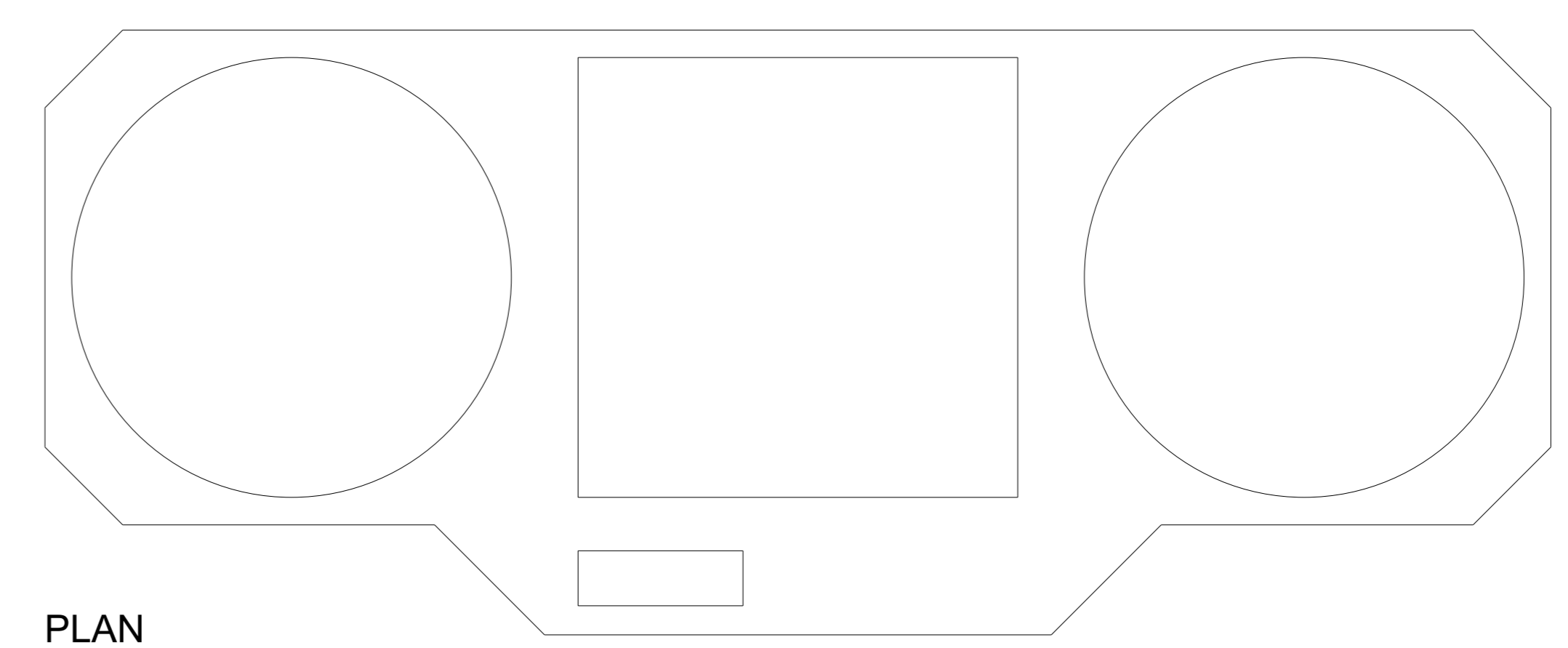
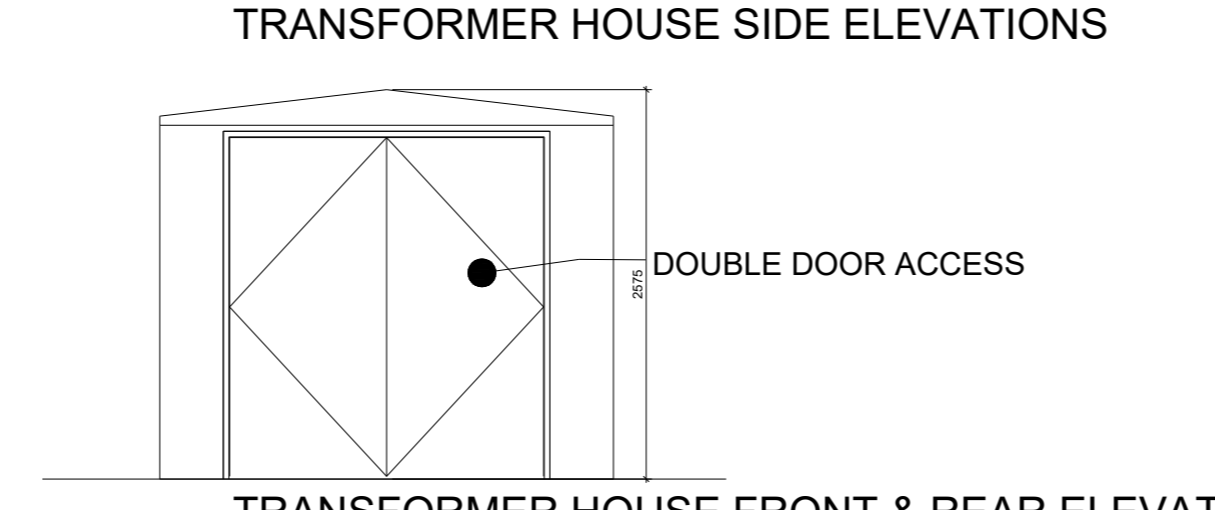
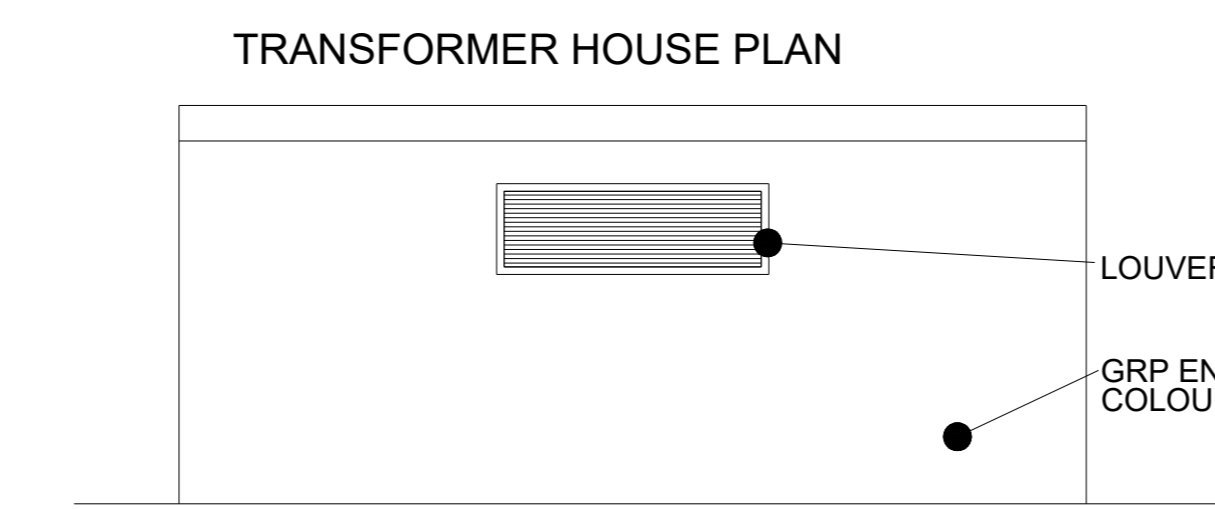
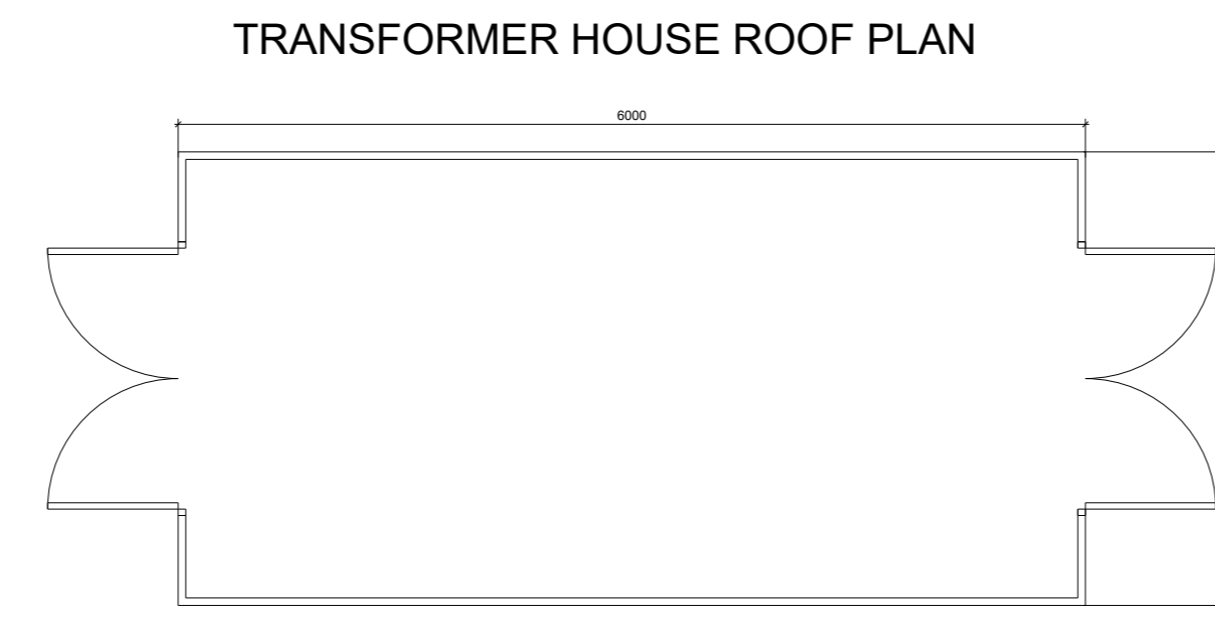
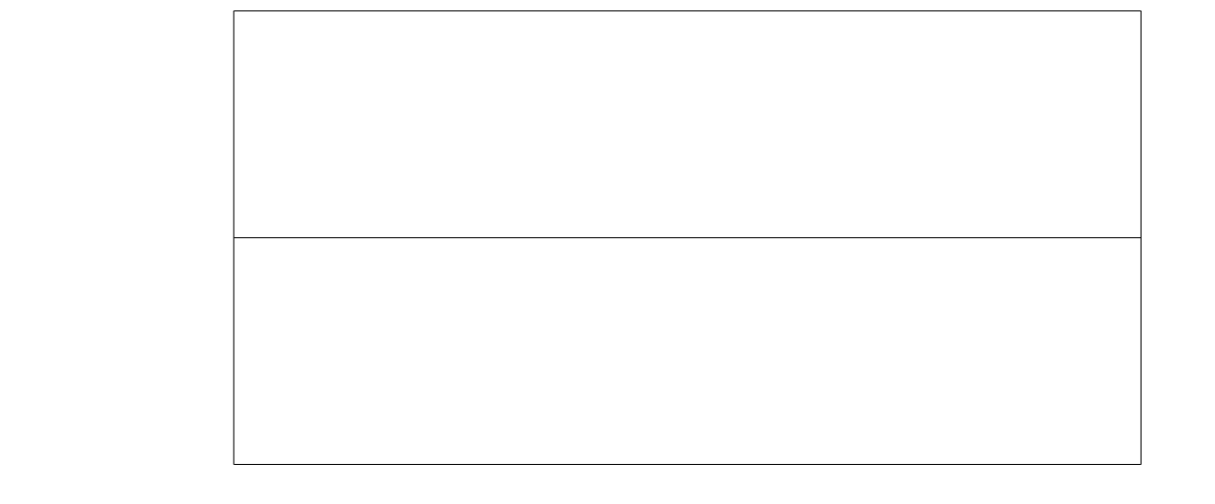
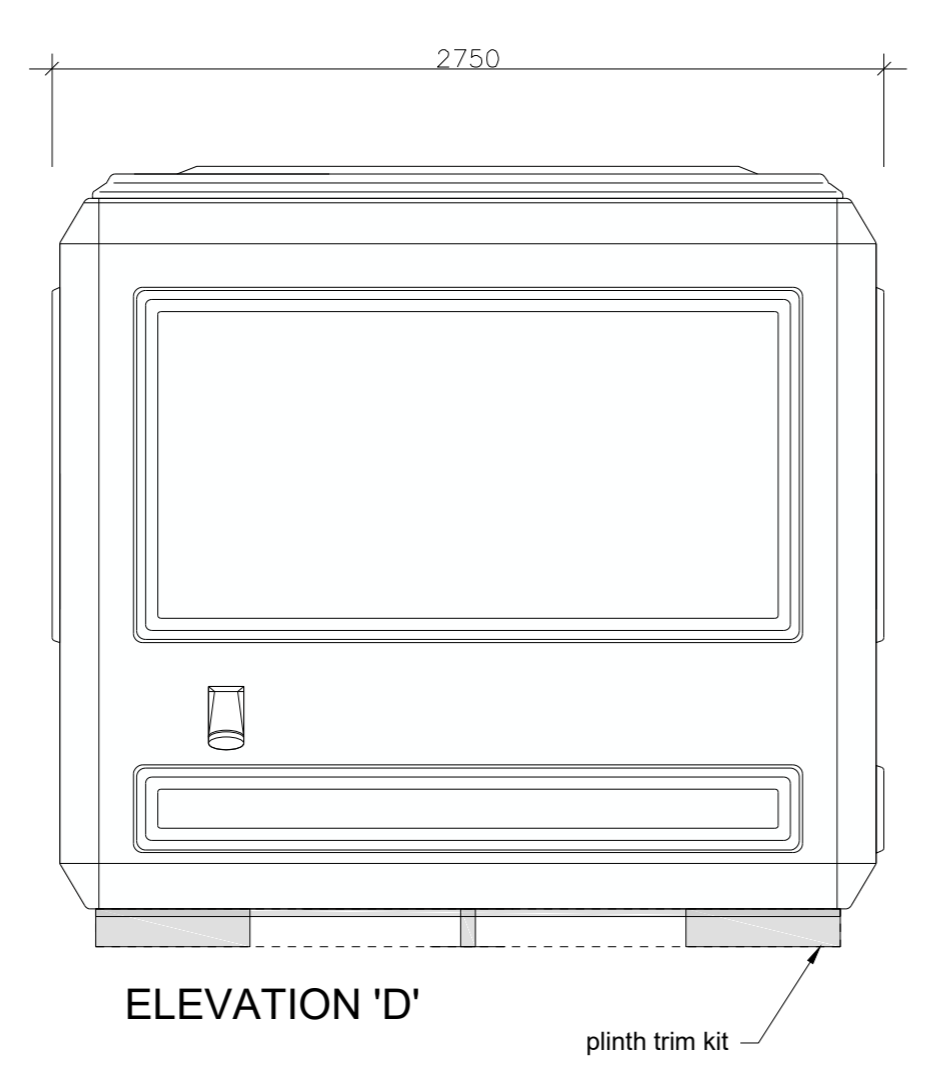
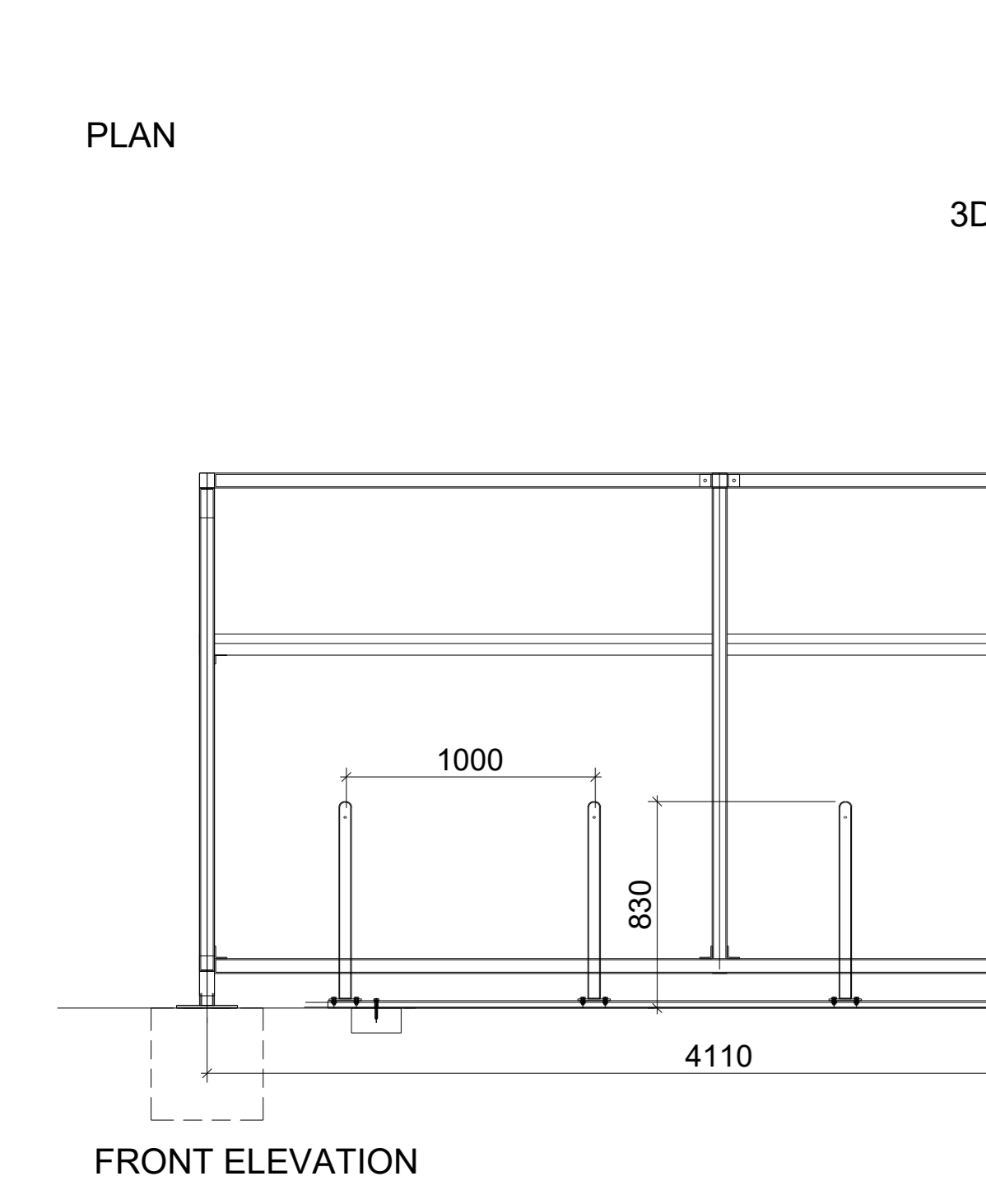
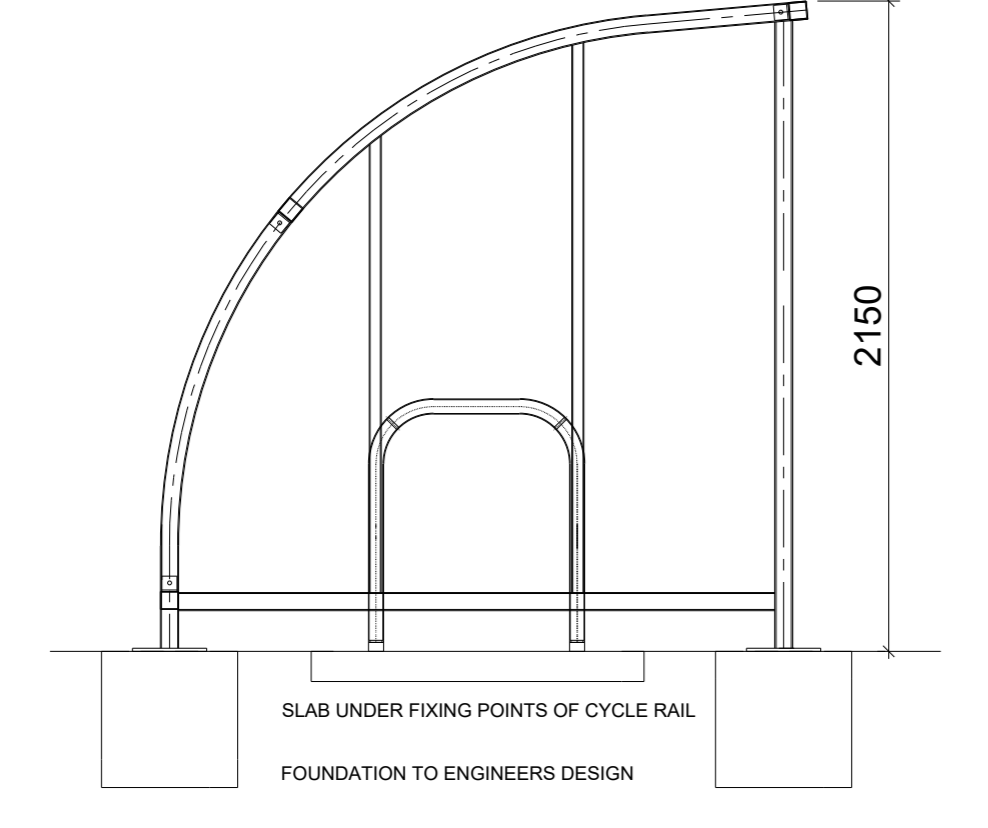
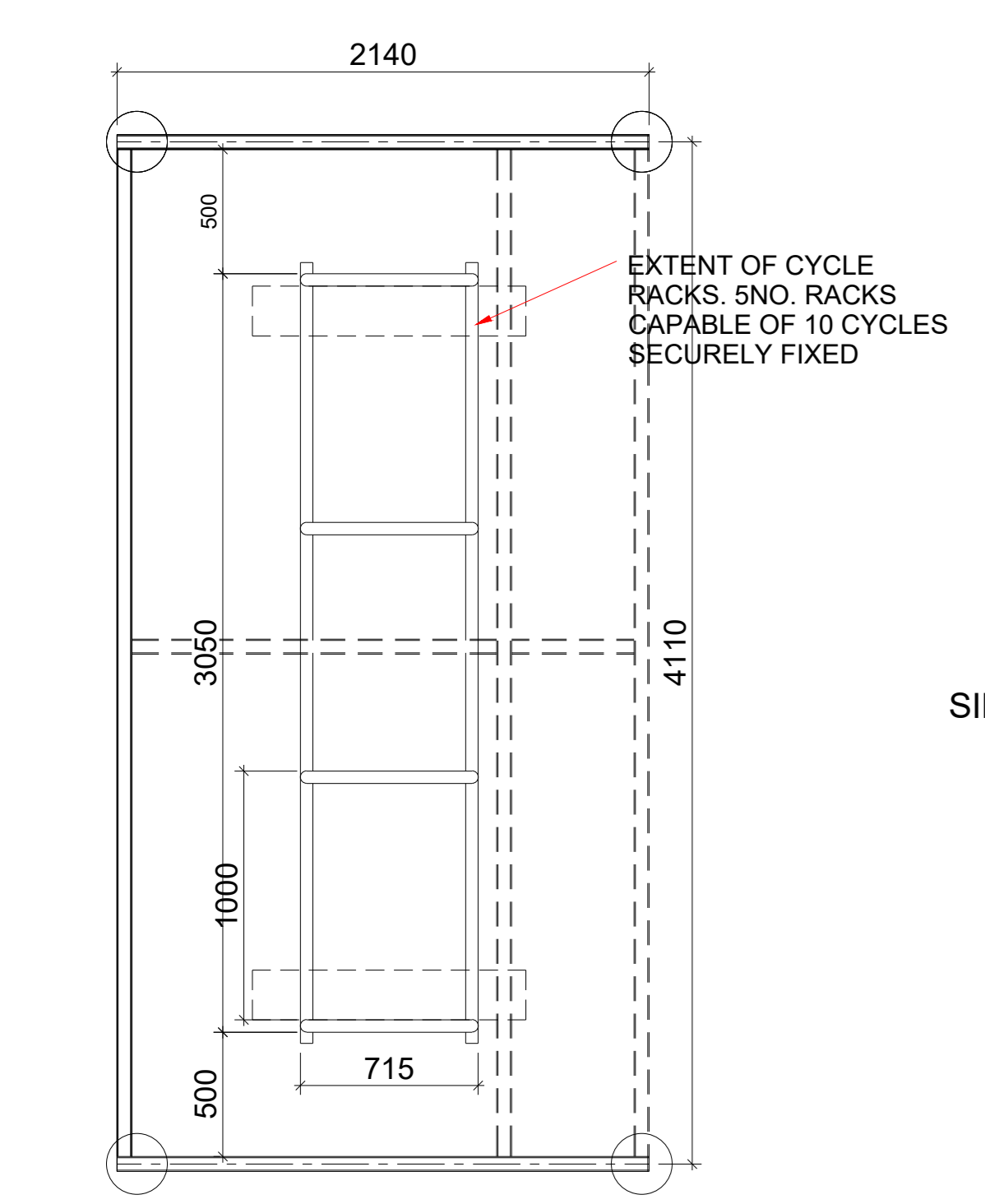


PRODUCT INFORMATION
DESCRIPTION:
 Fixed or free standing kiosk clw fork lift points.
MATERIAL:
 Panels - GRP panels with fire retardant foam and resin. Floor - Anti-slip plywood 18mm thick, black finish. Subframe - Mild steel with galvanised finish.
COLOUR:
 Standard White.
DIMENSIONS:
 All dimensions are in mm unless otherwise stated.
OPTIONAL EXTRAS:
 (see plan view for pre-determined layouts in red). Electrical kit (light & switch, double socket). Additional double socket. 750w convactor heater. 250mm Deep shelf. Data socket univied. External power intake socket or cable gland. Plinth trim kit (installed at site by others).
ELECTRICAL INSTALLATION:
 All electrical installation work undertaken as part of the supply of the unit is in accordance with BS 7671: 2018. Requirements for Electrical Installations Positions of electrical items are for illustrative purposes only, with final positions and requirements for additional connection units, light switches etc. to be determined by the Electrical Supervisor during assembly of the unit, to ensure the installation complies with the above standard and the requirements of the IET Wiring Regulations Eighteenth Edition.
INSTALLATION:
 Non permanent - a firm level surface.
 Permanent - Base to be a minimum of 2000 x 2100 x 125mm thick concrete onto well consolidated hardcore. Base to be smooth (float finish), flat, level, square and slightly raised above surrounding ground level. Drill four 12 x 90mm holes for use with expanding ground anchor bolts, locations pre-determined within subframe.



DO NOT SCALE THIS DRAWING.
 Architects are to be notified of any discrepancies.
 Contractors must check all dimensions on site.
 This drawing is subject to copyright laws and is for use on this project only.
 This drawing is to be used solely for the information as stated only.
 For other information refer to the latest revision of any cross referenced drawings.
 To be read in conjunction with relevant design standards/protocols.

GUARD HUT DETAILS
 1:25



EXTENT OF CYCLE RACKS. 5NO. RACKS CAPABLE OF 10 CYCLES SECURELY FIXED

SIDE ELEVATION

3D VIEW

FRONT ELEVATION

SHELTER STEEL FRAME TO BE GALVANISED AND POWDERCOATED ANTHRACITE, RAL 7016, TO BS 1461:2009

PANELS BETWEEN FRAME TO BE TRANSLUCENT POLYCARBONATE

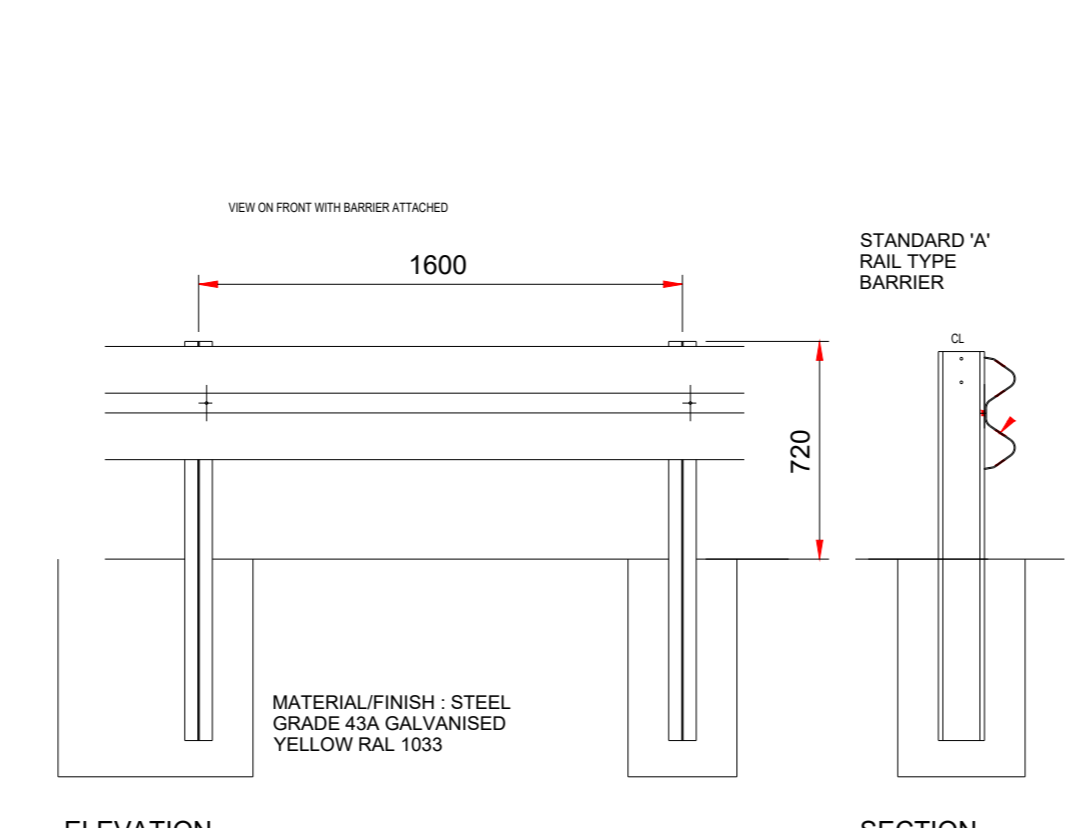
STAINLESS STEEL SATIN FINISH CYCLE SHEFFIELD STAND RACK.

BASEPLATE FIXED, BOLTED DOWN TO SURFACE FINISH.

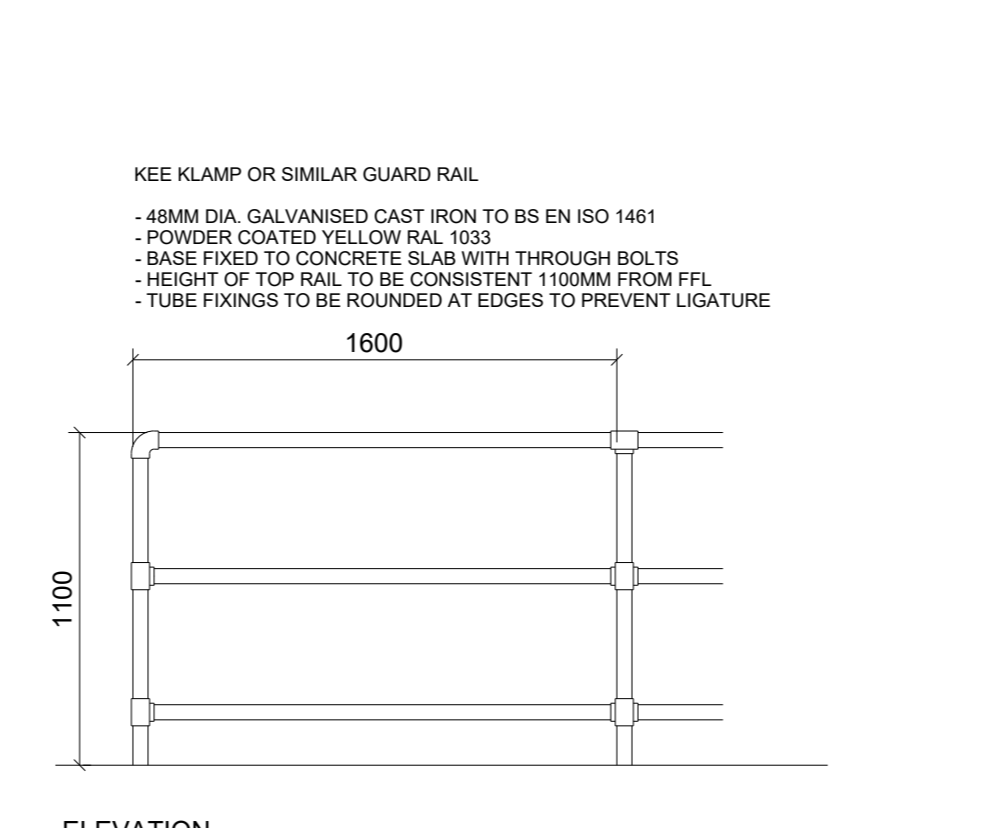
GALVANISED TO BS EN ISO 1461:2009

OMIT CYCLE STANDS AND REPLACE WITH 2NO. 1400MM BENCHES AND CIGARETTE WASTE BIN

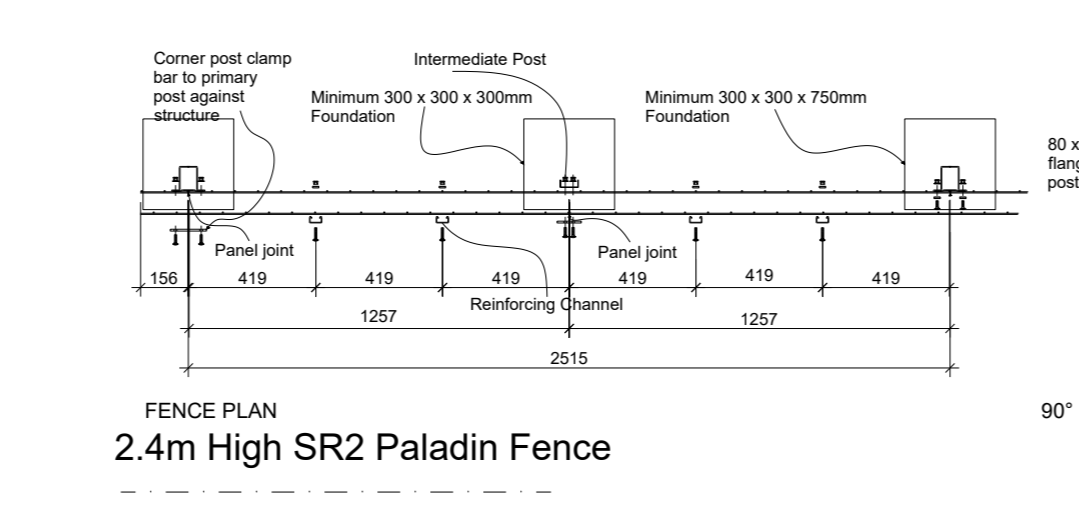
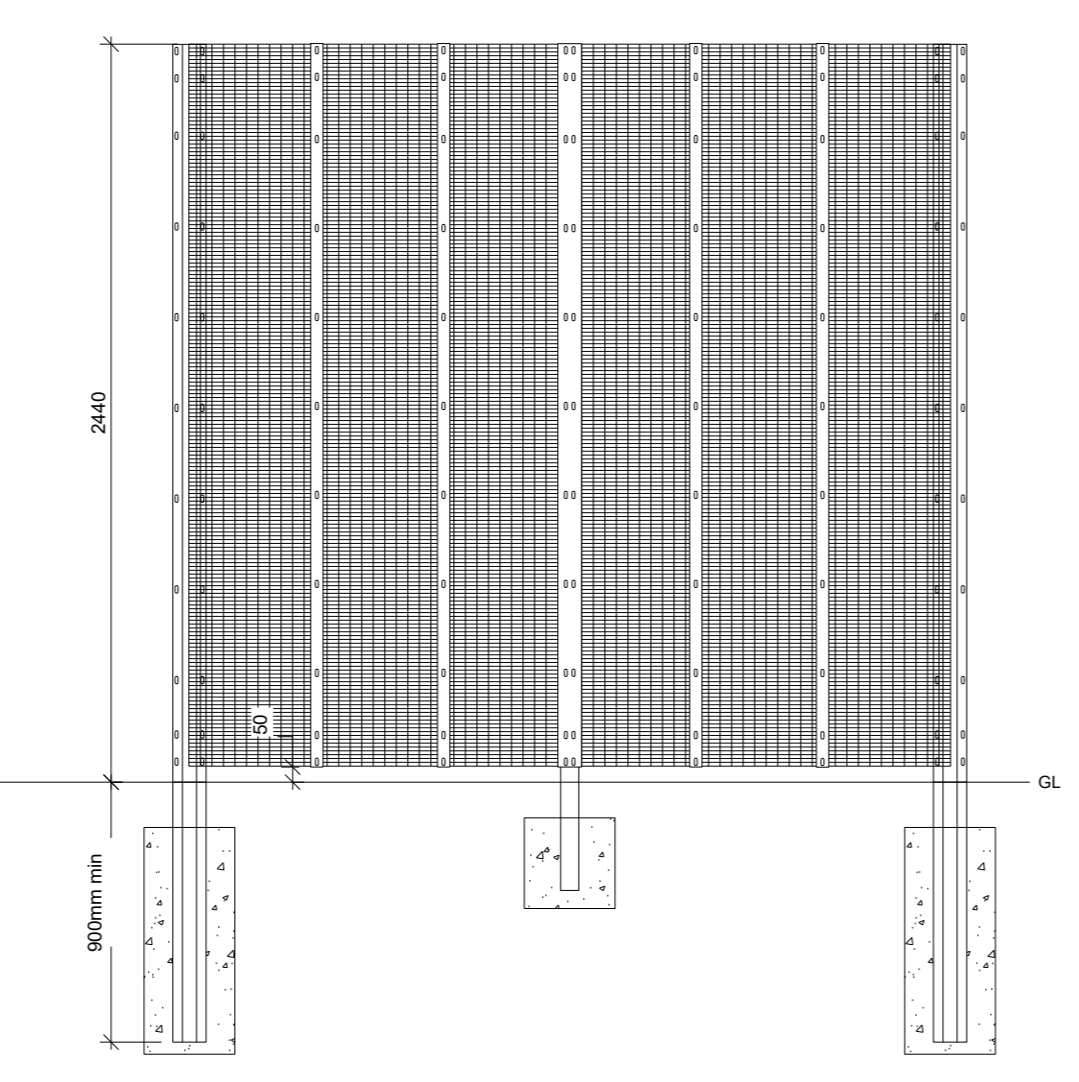
TRANSFORMER DETAILS
 1:50



VEHICLE SAFETY BARRIER



SAFETY BARRIER



FENCE PLAN
 2.4m High SR2 Paladine Fence

MESH & WIRE: 76.2 X 12.5 MM MESH, 4 MM WIRE, HIGH ALUMINIUM CONTENT GALVANISED AND POLYESTER POWDER-COATED TO MINIMUM 80 MICRONS DOUBLE LAYERED MESH SYSTEM.

POSTS: 80 X 60 MM SPECIAL FLANGED SECTION, HOT DIP GALVANISED AFTER MANUFACTURE AND POLYESTER POWDER-COATED WITH 120 X 6MM FULL LENGTH CLAMP BAR GALVANISED AND POLYESTER POWDER-COATED TO MATCH FENCING.

CORNER POSTS: 80 X 80 MM SHS, GALVANISED AFTER MANUFACTURE AND POLYESTER POWDER-COATED TO MATCH FENCING.

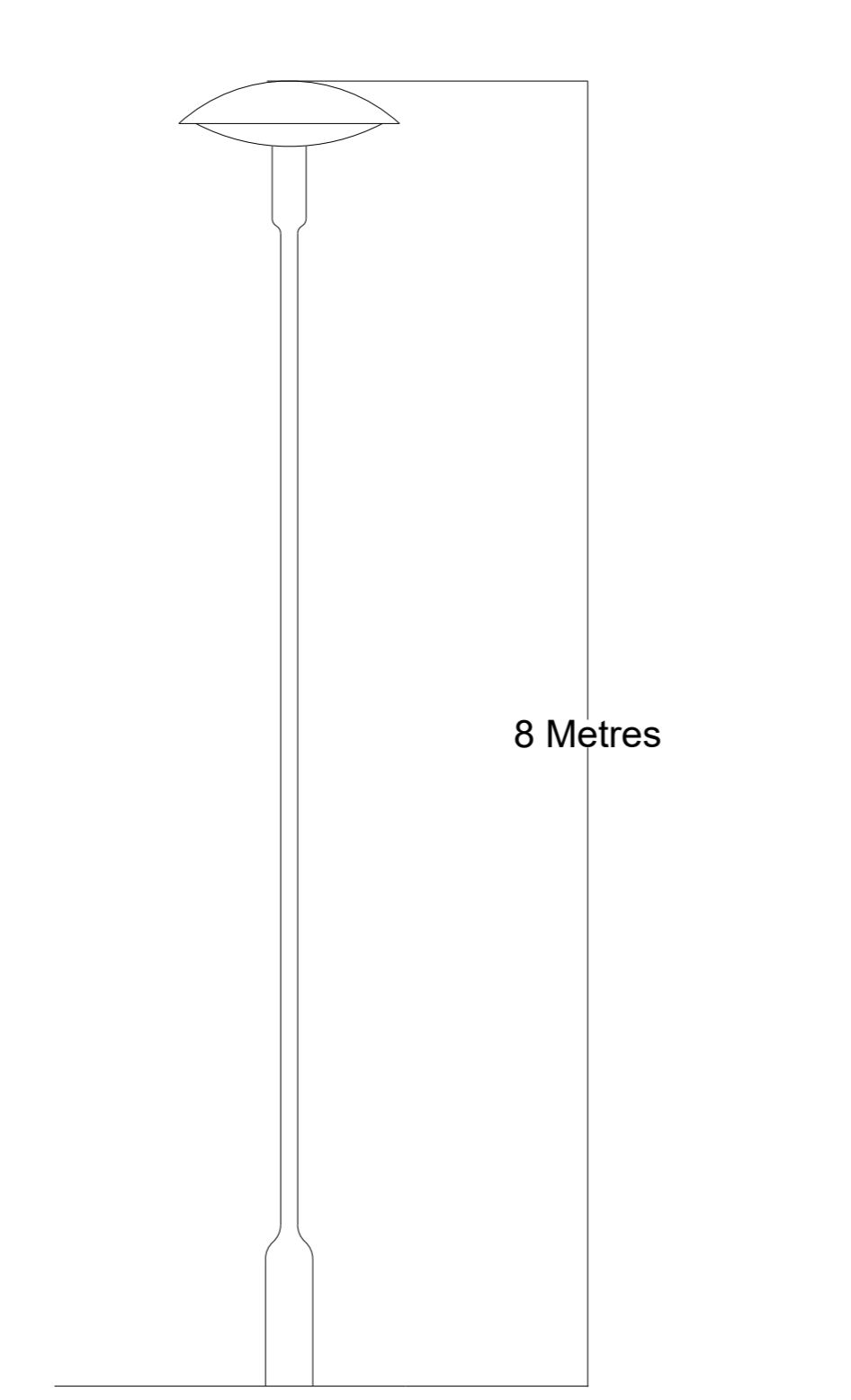
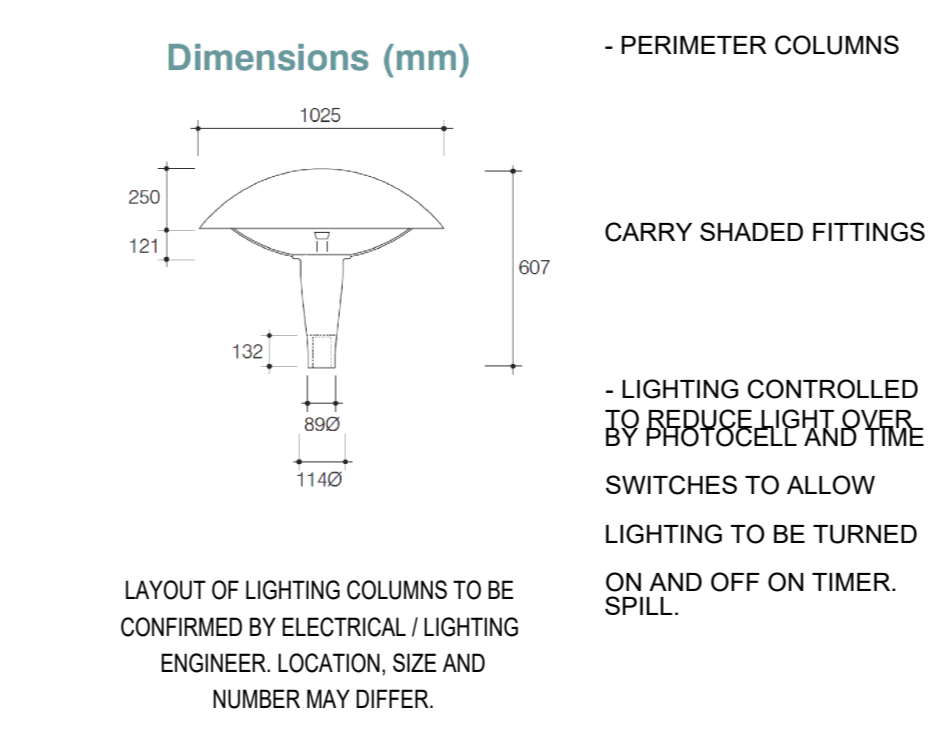
FIXINGS: M8 CUP SQUARE BOLT WITH PERMACONE NUT, STAINLESS STEEL SET POSTS; SET POSTS IN HOLES: 300 MM DIAMETER X 900 MM DEEP, FILLED NOT LESS THAN HALF THE DEPTH WITH CONCRETE, AS CLAUSE 620.

MAXIMUM POST CENTERS: 2500MM

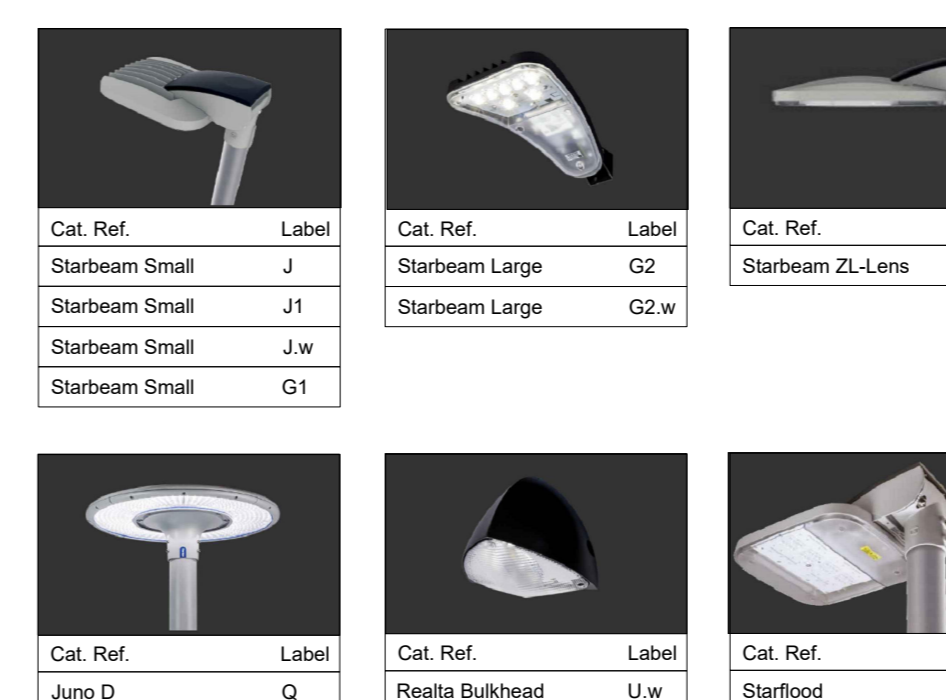
BOTTOM OF FENCING TO BE: APPROX. 50 MM ABOVE FINAL GROUND LEVEL.

OTHER REQUIREMENTS: PFC COLOUR BLACK RAL 9005.

SYSTEM CONFORMS TO LPS1175 SR2 SECURED BY DESIGN

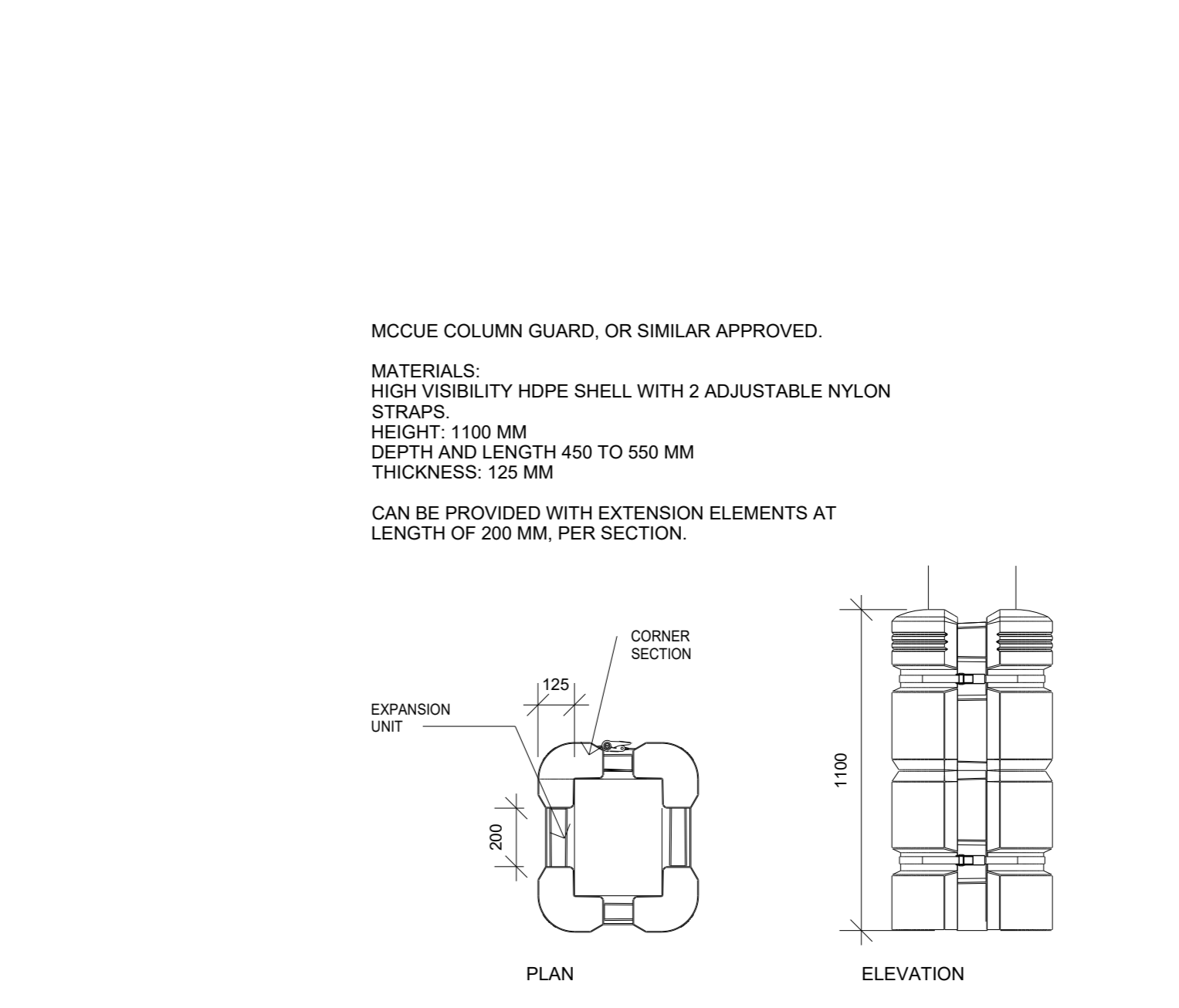


FOR INFORMATION ONLY



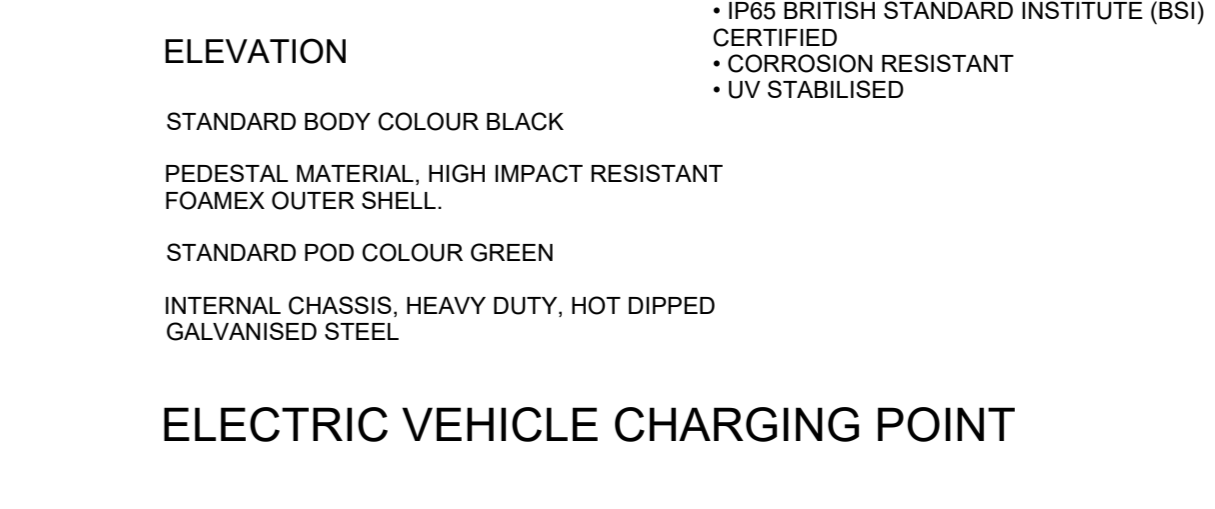
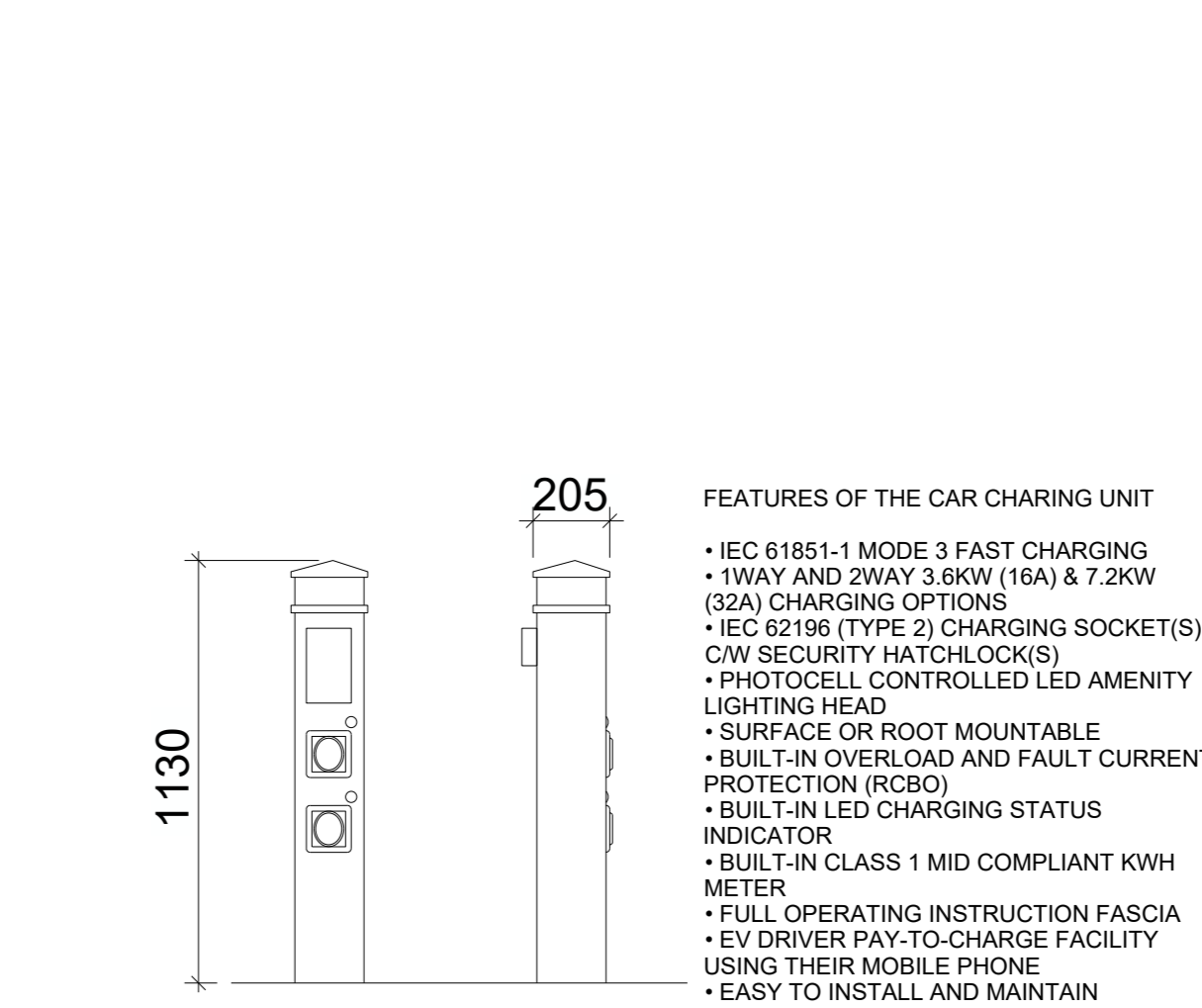
LIGHTING COLUMN DETAILS
 1:25

SPRINKLER TANK DETAILS
 1:100



SPRINKLER TANK DETAILS

COLUMN PROTECTION DETAILS
 1:20



BOLLARD DETAILS
 1:50

CYCLE AND SMOKING SHELTER DETAILS
 1:25

FENCING DETAILS
 1:25

P03	13/08/21	EV CHARGING DETAILS ADDED	AH	MA
P02	10/08/21	SCALE BARS ADDED	AH	MA
P01	02/08/21	FIRST ISSUE	DA	MA
REV	DATE	DESCRIPTION	DA	MA
		AMENDMENTS	DRN	CKD

STATUS:	PLANNING		
CLIENT:	LYSANDER		
PROJECT NAME:	Southam Road, Banbury		
PROJECT ADDRESS:	Southam Road, Banbury OX16 3AE		
DRAWING TITLE:	EXTERNAL FURNITURE DETAIL		
JOB NO:	DRG NO:	REVISION:	
20-6507	A006	P03	
DATE:	SCALE:	SHEET SIZE:	
AUG 21	VARIOUS	A0	

