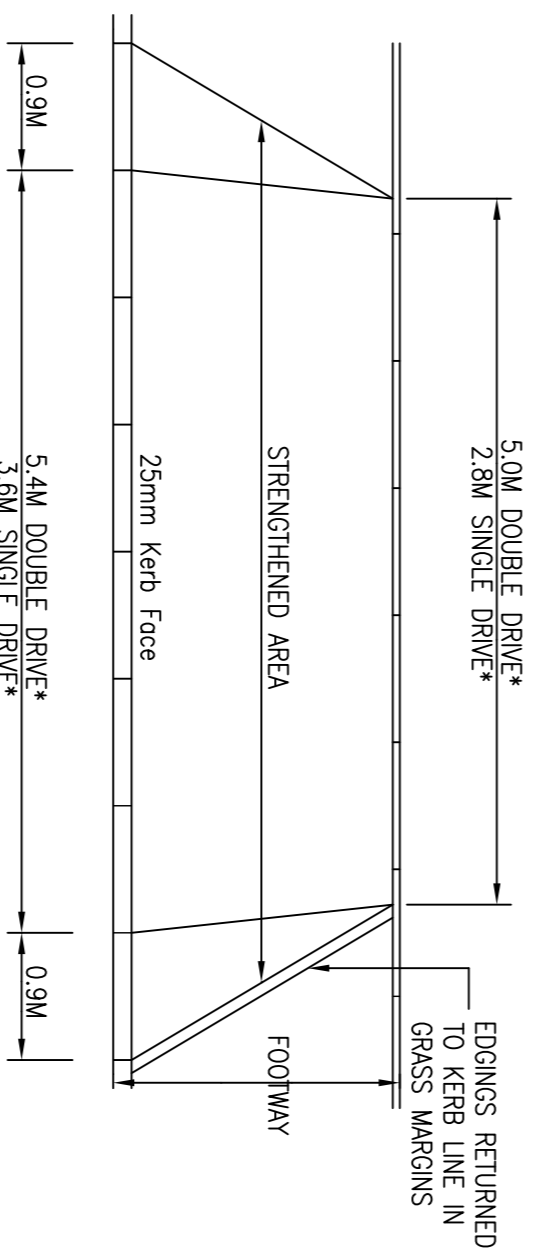
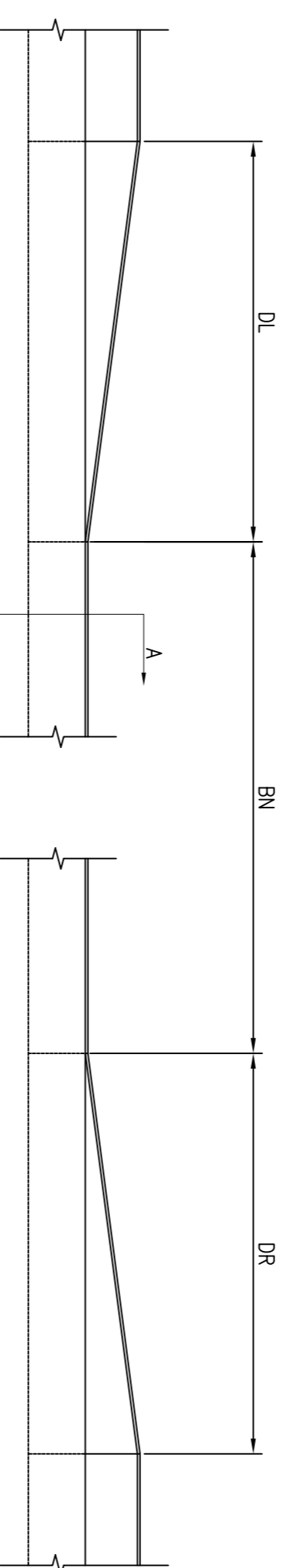


- KEY**
- A – Minimum of 3 number markings or as specified by the engineer. White 4m mark, 2m gap, 100mm wide. TSRGD 1994 Diagram No. 1004.
 - B – White 600mm mark, 300mm gap, 200mm wide. TSRGD 1994 Diagram No. 1003.
 - C – White 600mm mark, 300mm gap, 100mm wide. TSRGD 1994 Diagram No. 1009.

NOTES

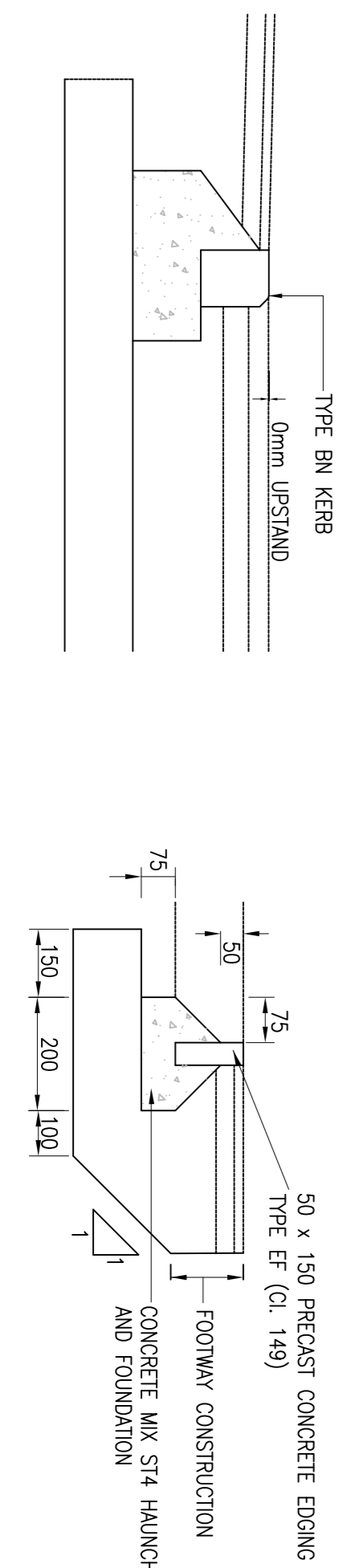
1. All markings to be of thermoplastic spray or screen with applied solid glass beads and designed in accordance with Chapter 5 of the Traffic signs manual (H.M.S.O.)
 2. Road markings must be in accordance with Chapter 3 of the Traffic signs manual (H.M.S.O.) and approved by Stevenage C.B.C.
- All dimensions are in millimetres unless otherwise stated.

WHITE LINING DETAIL FOR JUNCTION



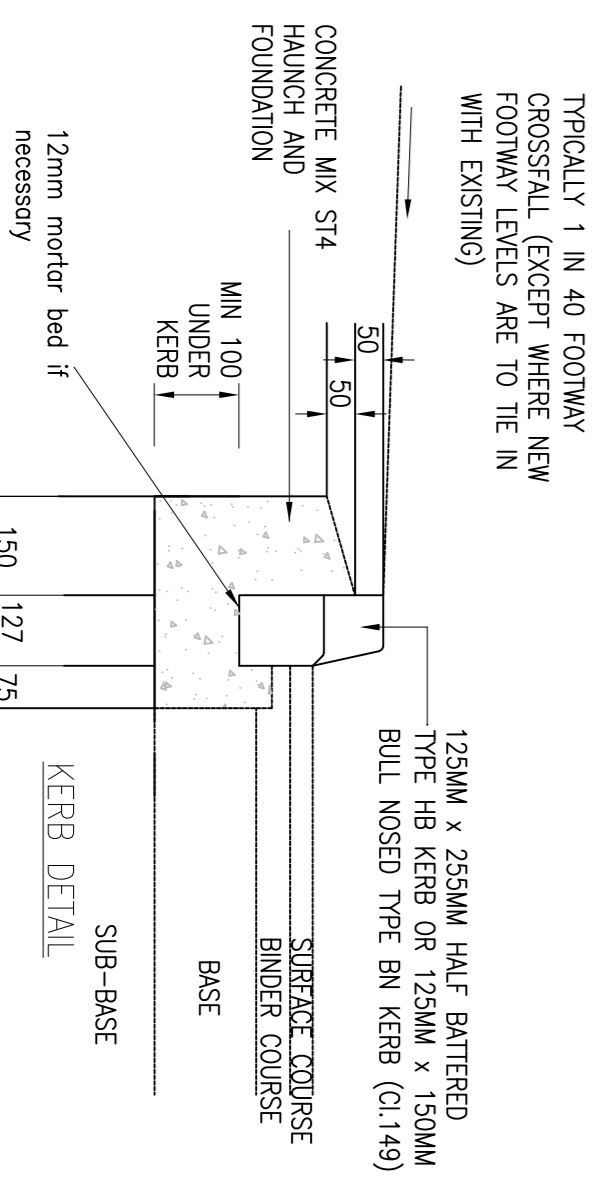
VEHICLE CROSS OVER

*WIDTHS MAY VARY, ONLY MINIMUM SHOWN. REFER TO ENGINEERING LAYOUT

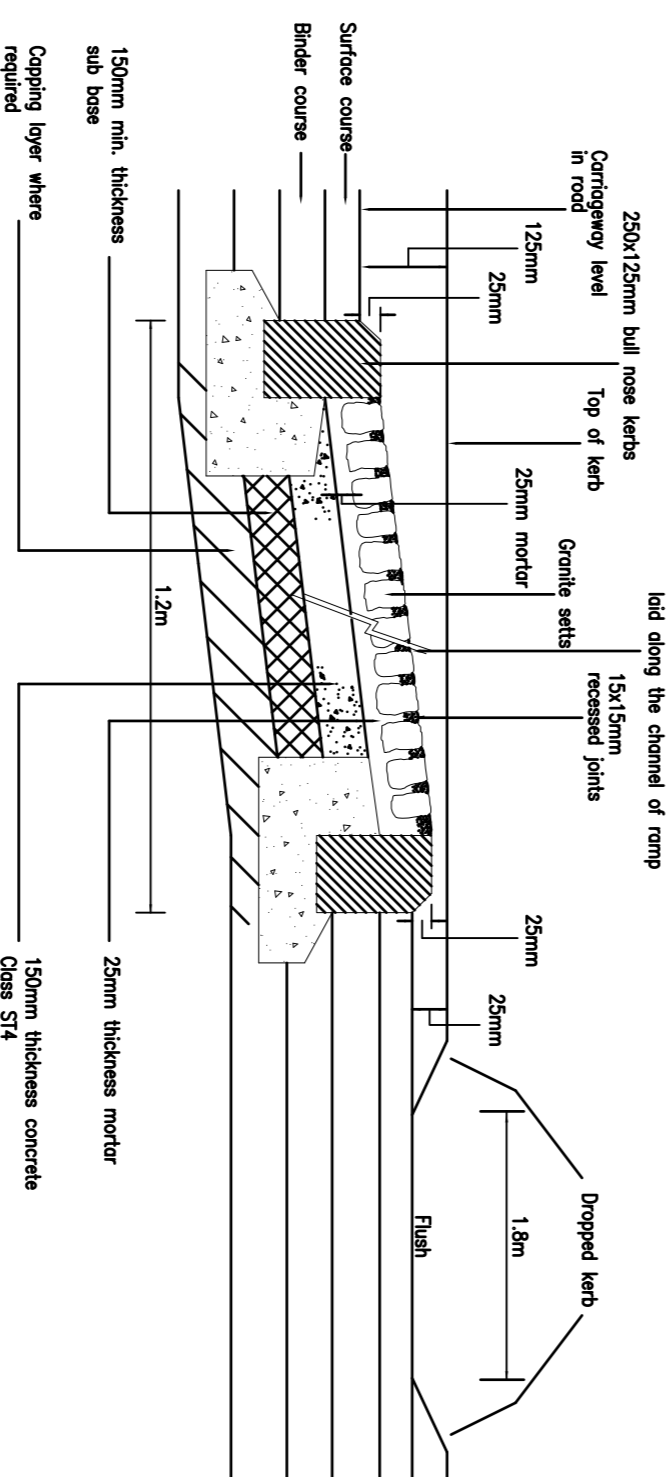


SECTION A-A

FOOTWAY EDGING TYPE EF



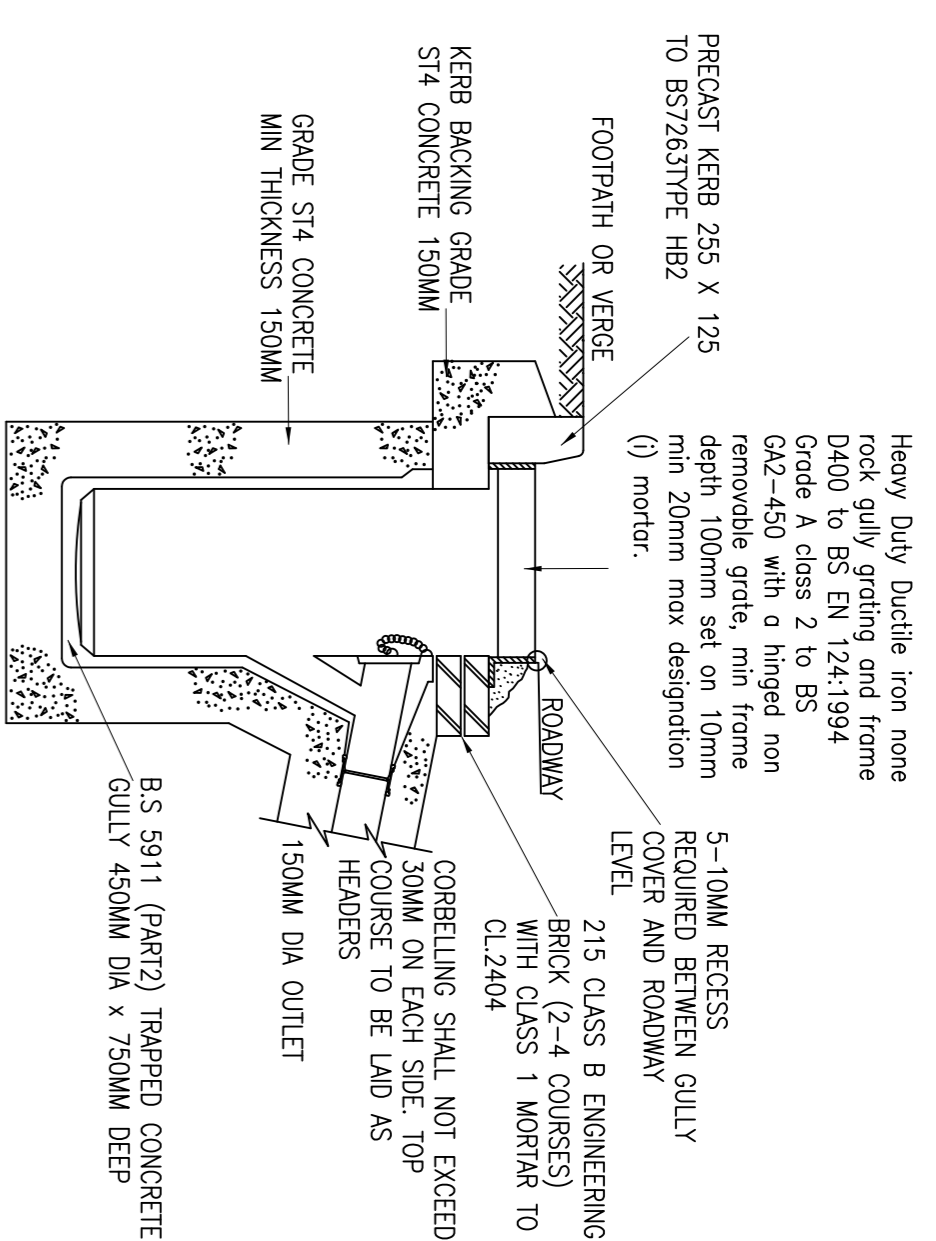
HALF BATTERED KERB HB2



TYPICAL RUMBLE RAMP DETAIL

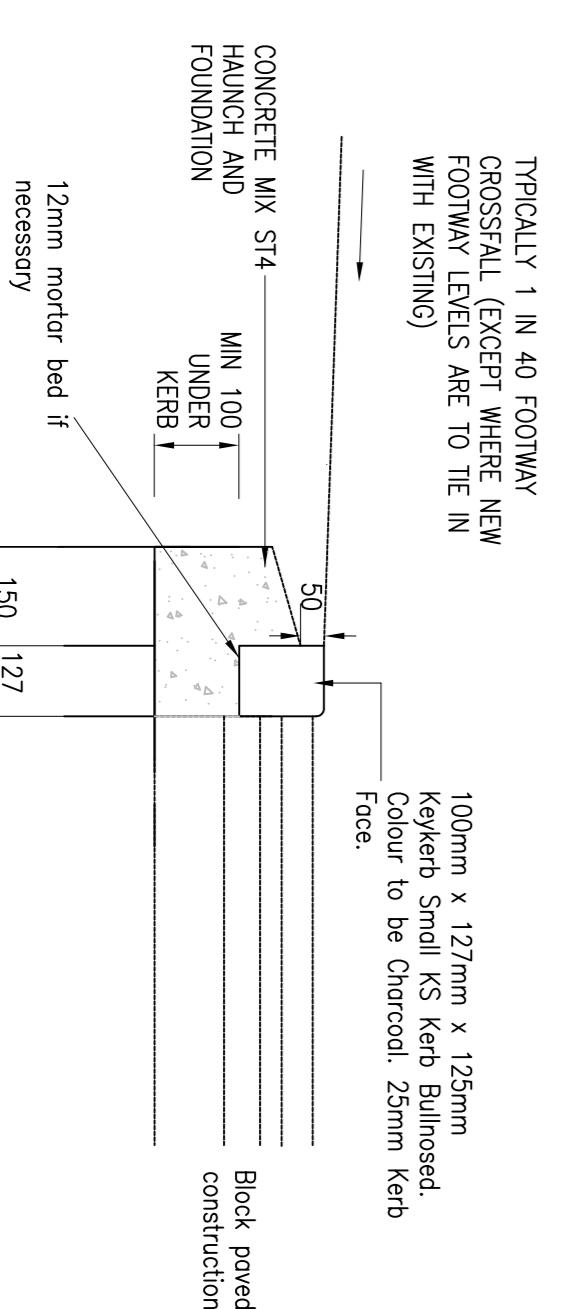
SECTION

TYPICALLY 1 IN 40 FOOTWAY GROSSFALL (EXCEPT WHERE NEW FOOTWAY LEVELS ARE TO THE IN WITH EXISTING)



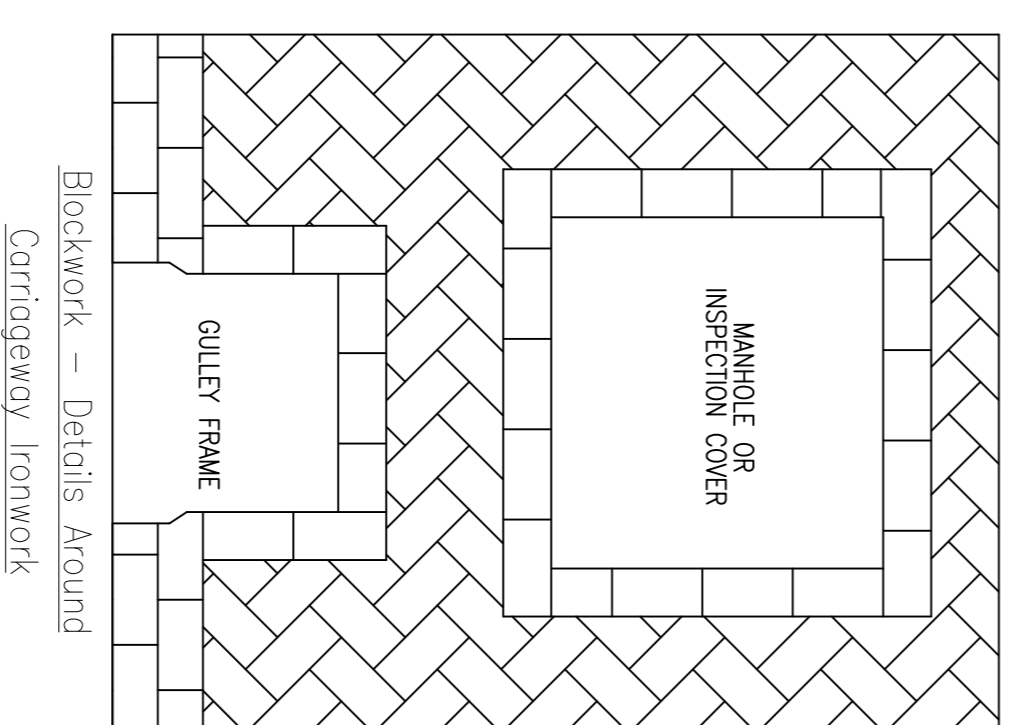
- NOTES**
1. DESIRABLE MIN. SLOPE OF GULLY OUTFALL TO BE 1 IN 60
 2. EXISTING CONNECTIONS TO BE PROVIDED WITH CONCRETE BED AND SURROUND TO 12MM DEPTH BELOW GROUND LEVEL AT THE TIME OF INSTALLATION.
 3. EXCAVATIONS AROUND GULLIES TO BE BACKFILLED WITH TYPE 2 MATERIAL AS DESCRIBED IN TABLE 6 AND COMPACTED IN COMPLIANCE WITH CLAUSE 6.12 WHERE MECHANICAL COMPACTATION IS IMPRACTICABLE. THE EXCAVATION IS TO BE BACKFILLED WITH GRADE S12 CONCRETE.

PRECAST CONCRETE GULLY TYPE G1



SHARED SURFACE KERB DETAIL

TYPICALLY 1 IN 40 FOOTWAY GROSSFALL (EXCEPT WHERE NEW FOOTWAY LEVELS ARE TO THE IN WITH EXISTING)



Blockwork - Details Around Gully Frame

1. All work under 5.00m.
2. For suitable roads and sewer details refer to drawings 5.500 series.
3. All connections to exclude manholes from private building drainage to be 150mm diameter pipe unless otherwise specified.
4. All drains design to be 100mm dia unless otherwise stated, and laid in accordance with current Building Regulations and BS3051 : 1985.
5. All drainage products are to be approved by the Engineer or the relevant authority.
6. Pipe bedding material is to be Class B with 150mm minimum thickness surround.
7. Bedding to be 100mm deep and 100mm wide.
8. Pipe bedding to be 100mm deep and 100mm wide.
9. Pipe bedding to be 100mm deep and 100mm wide.
10. Bedding to be 100mm deep and 100mm wide.
11. Bedding to be 100mm deep and 100mm wide.
12. All edges of steps to be 100mm deep and 100mm wide.
13. Bed bedding with an to be used in preference to gravel boards for hard garden areas.

- Blockwork Details**
1. All connections to exclude manholes from private building drainage to be 150mm diameter pipe unless otherwise specified.
 2. All drainage products are to be approved by the Engineer or the relevant authority.
 3. All drainage products are to be approved by the Engineer or the relevant authority.
 4. All drainage products are to be approved by the Engineer or the relevant authority.
 5. All drainage products are to be approved by the Engineer or the relevant authority.
 6. All drainage products are to be approved by the Engineer or the relevant authority.
 7. All drainage products are to be approved by the Engineer or the relevant authority.
 8. All drainage products are to be approved by the Engineer or the relevant authority.
 9. All drainage products are to be approved by the Engineer or the relevant authority.
 10. All drainage products are to be approved by the Engineer or the relevant authority.
 11. All drainage products are to be approved by the Engineer or the relevant authority.
 12. All drainage products are to be approved by the Engineer or the relevant authority.
 13. All drainage products are to be approved by the Engineer or the relevant authority.

Revised	24/01/11	Notes on gully detail amended
By		
Drawn		
Checked		
Highway Authority Approval Date		
Drainage Authority Approval Date		
<p>Do not scale from this drawing. Use notes. Dimensions given are approximate. All dimensions to be in millimetres unless otherwise stated. All dimensions to be in millimetres unless otherwise stated. All dimensions to be in millimetres unless otherwise stated. All dimensions to be in millimetres unless otherwise stated.</p>		
<p>Highway Authority Approval Date</p>		
<p>Drainage Authority Approval Date</p>		
<p>Boris Homes Central Region Bromwich Court Highway Point Coleshill B46 1JU Tel: 01875 437 000 Fax: 01875 437 094 DX: 728340 Coleshill 2</p>		
<p>Brookbanks Consulting</p>		
<p>6150 Knights Court, Salsford Parkway, Birmingham B37 7WY Tel: (0121) 329 4330 Fax: (0121) 329 4331 www.brookbanks.com</p>		
<p>SITE KINGSMERE, BICESTER KM2</p>		
<p>DRAWING TITLE TYPICAL HIGHWAY DETAILS</p>		
DRAWN BY	DATE	DRAWING NO.
NS	08/11/10	BICE_5_950
SCALE	CHECKED/DATE	REV
1:1	NS	A