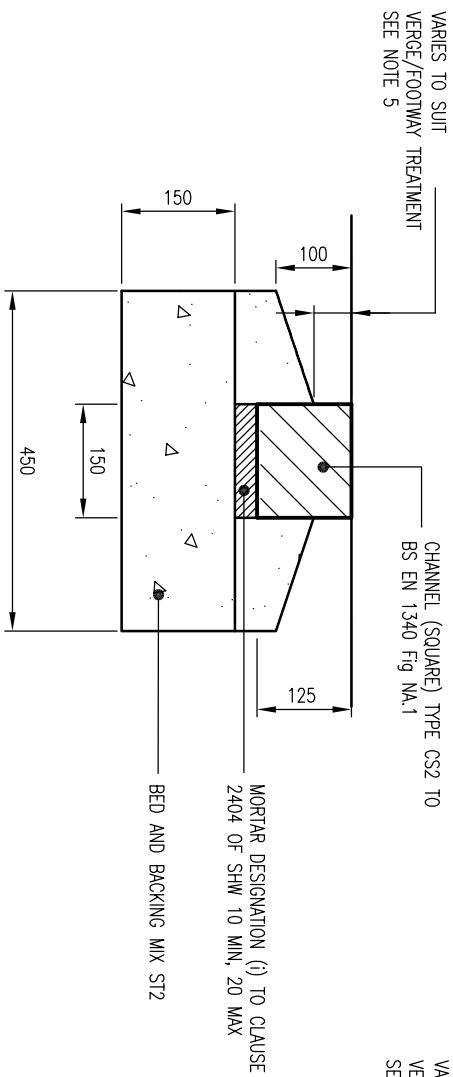
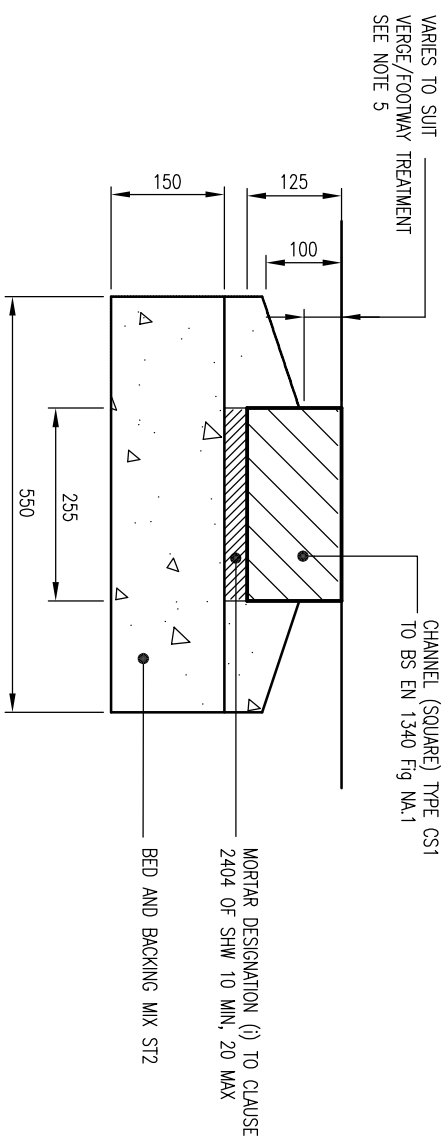


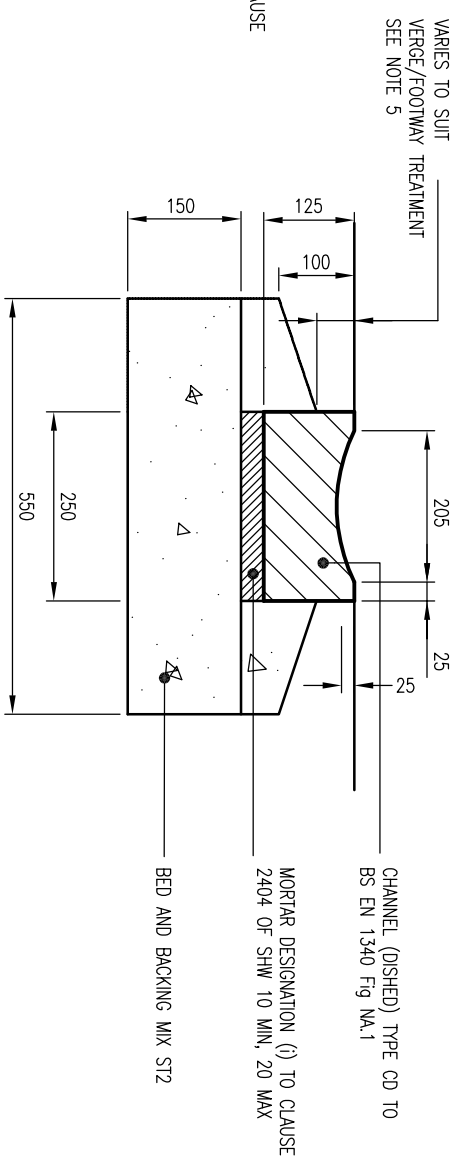
HALF BATTERED KERB TYPE HB3



CHANNEL (SQUARE) TYPE CS2



CHANNEL (SQUARE) TYPE CS1



CHANNEL (DISHED) TYPE CD

DO NOT SCALE

NOTES:

1. ALL DIMENSIONS ARE IN MILLIMETRES UNLESS OTHERWISE STATED.
 2. ALL CLAUSE NUMBERS REFER TO THE SPECIFICATION FOR HIGHWAY WORKS (SHW), LATEST EDITION.
 3. ALL PRECAST CONCRETE UNITS ARE TO CONFORM TO AND BE LAID IN ACCORDANCE WITH CL.1101 OF THE SPECIFICATION FOR HIGHWAY WORKS LATEST EDITION.
 4. KERB, BED AND BACKING SHALL BE ST2 GRADE CONCRETE TO CL.2602 OF THE SHW, LATEST EDITION.
 5. TO BE 30mm WHEN ADJACENT TO THE GRASSED VERGE, AND 30mm PLUS THE DEPTH OF THE PAVING STONE WHEN ADJACENT TO PAVING STONES.
 6. MECHANICAL HANDLING OF HEAVY ITEMS IS RECOMMENDED
- TYPICAL WEIGHTS:
 STANDARD PCC HB2 KERBS 69KG
 CONSERVATION KERB 83KG
 STANDARD PCC EDGING 45KG

REV	DATE	BY	DESCRIPTION	CHK	APP
D	18/02/10	JH	OCC COMMENTS INCORPORATED	JMH	JH
C	03/12/08	JH	ISSUED FOR TECHNICAL APPROVAL	JMH	JH
B	28/05/08	DP	MINOR AMENDMENTS	JMH	JMH
A	17/09/07	DAH	FIRST ISSUE	JMH	JJP

FOR TECHNICAL APPROVAL



Mounbatten House, Basing View, Basingstoke, Hampshire RG21 4HU
 Tel: +44 (0)1256 318800 Fax: +44 (0)1256 318700
<http://www.wspgroup.com>

COUNTRYSIDE PROPERTIES

PROJECT: SOUTH WEST BICESTER
 BICESTER, OXFORDSHIRE

KERBS TYPES SHEET 2 OF 3

SCALE @ A3	N.T.S.	CHECKED:	JMH	APPROVED:	JDP
DAO FILE	1903-SD-005.DWG	DESIGN/DRAWN:	DAH	DATE:	September 2007
PROJECT No:	11011903	DRAWING No:	1903/SD/005	REV:	D