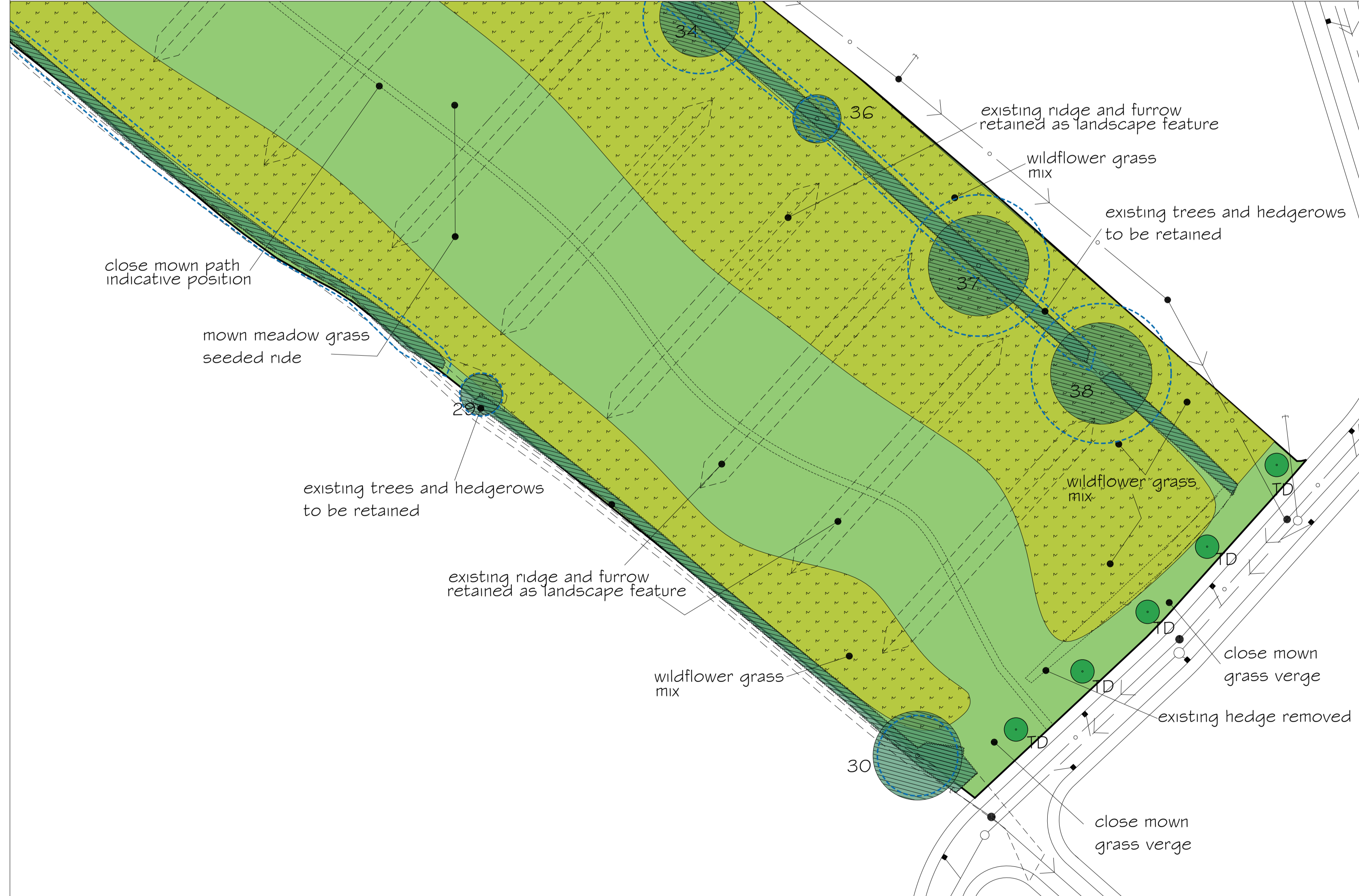


FOR CONTINUATION SEE GREEN CORRIDOR DWG NO DFD/BIC/SLG/L8 REV A

- TA Tilia Cordata 12-14cm girth RB
 TB Quercus Robur 12-14cm girth RB
 TC Betula Pendula 12-14cm girth RB
 TD Acer Platanoides Columnaris 20-25cm girth RB
- Native Hedging A**
 50% Crataegus Monogyna 311 no
 10% Acer Campestre 63no
 10% Corylus Avellana 63no
 5% Sambucus Nigra 32no
 5% Ulmus Glabra 32no
 5% Cornus Sanguinea 32no
 5% Euonymus Europeans 32no
 5% Rosa Canina 32no
- Native Hedging B**
 50% Crataegus Monogyna 78no
 10% Acer Campestre 16no
 10% Corylus Avellana 16no
 5% Sambucus Nigra 8no
 5% Ulmus Glabra 8no
 5% Cornus Sanguinea 8no
 5% Euonymus Europeans 8no
 5% Rosa Canina 8no
- Native Hedging C**
 50% Crataegus Monogyna 171 no
 10% Acer Campestre 35no
 10% Corylus Avellana 35no
 5% Sambucus Nigra 17no
 5% Ulmus Glabra 17no
 5% Cornus Sanguinea 17no
 5% Euonymus Europeans 17no
 5% Rosa Canina 17no
- Native Hedging D**
 50% Crataegus Monogyna 377no
 10% Acer Campestre 76no
 10% Corylus Avellana 76no
 5% Sambucus Nigra 38no
 5% Ulmus Glabra 38no
 5% Cornus Sanguinea 38no
 5% Euonymus Europeans 38no
 5% Rosa Canina 38no
- to be planted bare root two staggered rows at 350mm centres with 450mm between rows, to be protected with rabbit guard and stout cane

hedge around play area to be protected with 1500 high round stakes driven in the ground 500mm with 1000mm 150 gauge pigwire stapled on with hedge to be planted either side, fence to be removed once hedge is established.

- Wildflower mix :**
 from BSH tel 01522 868714
 www.bshmenty.com
 seed mix type RE1
- | | |
|---------------------------------|---------------------------|
| Festuca rubra ssp litoralis 36% | Achillea millefolium 1.5% |
| Cynosurus cristatus 24% | Centauria nigra 1.5% |
| Agrostis capillans 14% | Galium verum 1.5% |
| Trisetum flavescens 6% | Leucanthemum vulgare 1.5% |
| Anthoxanthum odoratum 2% | Leontodon hispidus 1% |
| Plantago lanceolata 2% | Agrimonia eupatorium 1% |
| Prunella vulgaris 1.5% | Rhinanthus minor 1% |
| Ranunculus acris 1.5% | Lotus corniculatus 0.5% |
| Filipendula ulmaria 1.5% | Sanguisorba minor 0.5% |
| Ranunculus bulbosus 1.5% | |



REVISION "C" PLANNERS COMMENTS ADDED FEB 2010
 REVISION "B" PLANNERS COMMENTS ADDED FEB 2010
 REVISION "A" PLANNERS COMMENTS ADDED FEB 2010

 Countryside Properties (Special Projects) Ltd Countryside House The Drive Brentwood Essex CM13 3AT Telephone 01277 260000 Facsimile 01277 690690 www.countryside-properties.co.uk E-mail Countryside@diad.pipex.com	david fountain designs ltd Architectural and Landscape Design Consultants The Design Studio Ivy Lodge 71 Belmont Avenue Wickford Essex SS12 0HG tel/fax- 01268 461344 email- davidfountain@blueyonder.co.uk mobile- 07730 064853 www.davidfountain.com www.4scapes.com www.gridlinesforkids.com	
	Description LANDSCAPING DETAILS TO WHITELANDS FARM SL15	Drawing Name BICESTER OXFORD
Drawn by DAVID FOUNTAIN	Scale(s) 1:500@AO	Date 29/7/2009