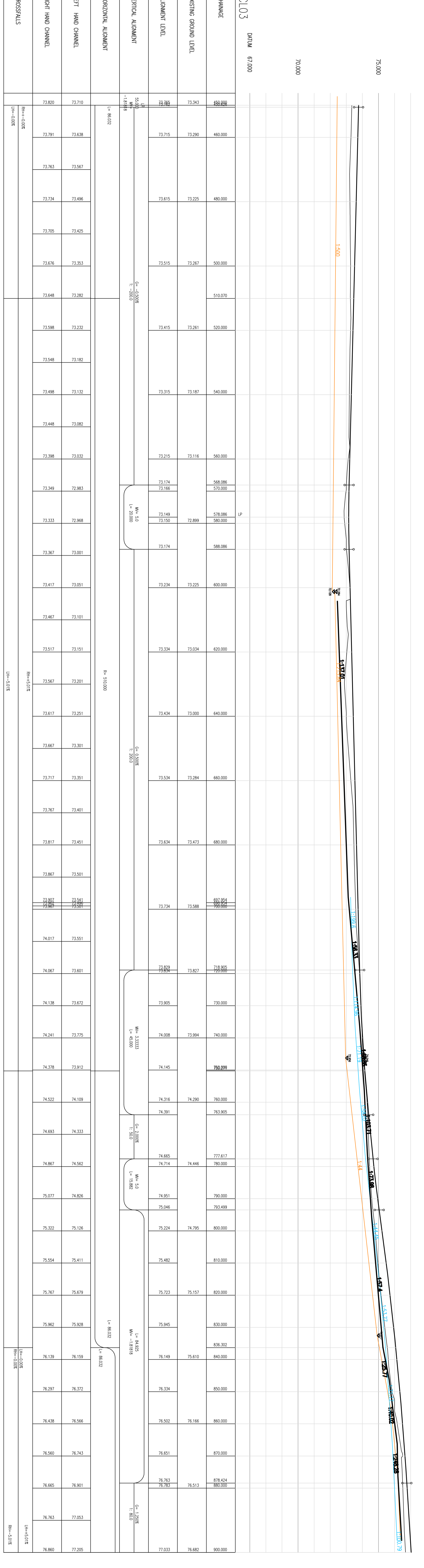


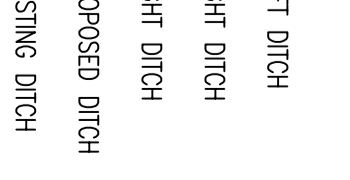
CHANCE	EXISTING GROUND LEVEL	ALIGNMENT LEVEL	VERTICAL ALIGNMENT	HORIZONTAL ALIGNMENT	LEFT HAND CHANNEL	RIGHT HAND CHANNEL	CROSSFALLS
	69.000	69.000			69.221	69.411	
	69.100	69.100			69.392	69.708	
	69.200	69.200			69.557	69.933	
	69.300	69.300			69.738	70.104	
	69.400	69.400			69.952	70.318	
	69.500	69.500			70.192	70.582	
	69.600	69.600			70.382	70.816	
	69.700	69.700			70.577	71.043	
	69.800	69.800			70.802	71.268	
	69.900	69.900			71.027	71.493	
	70.000	70.000			71.242	71.707	
	70.100	70.100			71.438	71.904	
	70.200	70.200			71.616	72.092	
	70.300	70.300			71.776	72.242	
	70.400	70.400			71.918	72.384	
	70.500	70.500			72.041	72.507	
	70.600	70.600			72.147	72.613	
	70.700	70.700			72.234	72.700	
	70.800	70.800			72.314	72.780	
	70.900	70.900			72.394	72.860	
	71.000	71.000			72.475	72.940	
	71.100	71.100			72.555	73.021	
	71.200	71.200			72.635	73.101	
	71.300	71.300			72.715	73.181	
	71.400	71.400			72.791	73.257	
	71.500	71.500			72.851	73.317	
	71.600	71.600			72.901	73.367	
	71.700	71.700			72.951	73.417	
	71.800	71.800			73.001	73.467	
	71.900	71.900			73.051	73.517	
	72.000	72.000			73.101	73.567	
	72.100	72.100			73.151	73.617	
	72.200	72.200			73.201	73.667	
	72.300	72.300			73.251	73.717	
	72.400	72.400			73.305	73.812	
	72.500	72.500			73.376	73.911	
	72.600	72.600			73.448	73.220	
	72.700	72.700			73.519	73.749	
	72.800	72.800			73.590	73.777	
	72.900	72.900			73.661	73.826	
	73.000	73.000			73.732	73.855	
	73.100	73.100			73.792	73.283	
	73.200	73.200			73.815	410.000	
	73.300	73.300			73.830	420.000	
	73.400	73.400			73.828	430.000	
	73.500	73.500			73.805	440.000	
	73.600	73.600			73.783	450.000	
	73.700	73.700			73.755	460.000	
	73.800	73.800			73.725	470.000	
	73.900	73.900			73.695	480.000	
	74.000	74.000			73.665	490.000	



CHANCE	EXISTING GROUND LEVEL	ALIGNMENT LEVEL	VERTICAL ALIGNMENT	HORIZONTAL ALIGNMENT	LEFT HAND CHANNEL	RIGHT HAND CHANNEL	CROSSFALLS
	73.000	73.000			73.791	73.638	
	73.100	73.100			73.763	73.567	
	73.200	73.200			73.734	73.496	
	73.300	73.300			73.705	73.425	
	73.400	73.400			73.676	73.353	
	73.500	73.500			73.648	73.282	
	73.600	73.600			73.598	73.232	
	73.700	73.700			73.548	73.182	
	73.800	73.800			73.498	73.132	
	73.900	73.900			73.448	73.082	
	74.000	74.000			73.398	73.032	
	74.100	74.100			73.349	72.983	
	74.200	74.200			73.300	72.933	
	74.300	74.300			73.251	72.883	
	74.400	74.400			73.202	72.833	
	74.500	74.500			73.153	72.783	
	74.600	74.600			73.104	72.733	
	74.700	74.700			73.055	72.683	
	74.800	74.800			73.006	72.633	
	74.900	74.900			72.957	72.583	
	75.000	75.000			72.908	72.533	
	75.100	75.100			72.859	72.483	
	75.200	75.200			72.810	72.433	
	75.300	75.300			72.761	72.383	
	75.400	75.400			72.712	72.333	
	75.500	75.500			72.663	72.283	
	75.600	75.600			72.614	72.233	
	75.700	75.700			72.565	72.183	
	75.800	75.800			72.516	72.133	
	75.900	75.900			72.467	72.083	
	76.000	76.000			72.418	72.033	
	76.100	76.100			72.369	71.983	
	76.200	76.200			72.320	71.933	
	76.300	76.300			72.271	71.883	
	76.400	76.400			72.222	71.833	
	76.500	76.500			72.173	71.783	
	76.600	76.600			72.124	71.733	
	76.700	76.700			72.075	71.683	
	76.800	76.800			72.026	71.633	
	76.900	76.900			71.977	71.583	
	77.000	77.000			71.928	71.533	

DO NOT SCALE

- NOTES
1. ALL DIMENSIONS ARE IN METRES UNLESS OTHERWISE STATED. DIMENSIONS IN MILLIMETRES SHOULD BE ALSO IN METRES.
  2. PIPE DIA METERS ARE IN MILLIMETRES.
  3. THIS DRAWING SHOULD BE READ IN CONJUNCTION WITH ALL OTHER RELEVANT DRAWINGS, SPECIFICATIONS, BIDDING & SPECIFICATIONS.
  4. ALL FILL, SLOPE WORKS ARE TO BE CHECKED OUT IN ACCORDANCE WITH SPECIFICATIONS FOR CONSTRUCTION ON SITE. THE LOCATION OF ANY SERVICES SHOWN ON THIS DRAWING ARE INDICATIVE ONLY. IT SHALL BE THE RESPONSIBILITY OF THE CONTRACTOR TO LOCATE AND PROTECT THE SERVICES PRIOR TO CONSTRUCTION. ANY CONSTRUCTION WORKS SHALL BE IN ACCORDANCE WITH THE RELEVANT STATUTORY REQUIREMENTS FOR CONSTRUCTION.
  5. FOR CONSTRUCTION DETAILS REFER TO THE RELEVANT DRAWINGS AND SPECIFICATIONS.
  6. THE CONTRACTOR IS TO KEEP A RECORD OF ANY VARIATIONS TO THE ORIGINAL DESIGN AND TO NOTIFY THE ENGINEER UPON COMPLETION OF THE PROJECT.
  7. CLASS 5 BED & SURROUND TO BE USED WHERE COVER TO PIPE IS GREATER THAN 1.2M IN HEIGHTS OR DEEP IN OPEN CUTTINGS. STANDARD DETAIL SHALL BE USED WHERE COVER IS NOT TO BE USED FOR COSTING.
  8. ALL PIPES SHALL BE Laid SOUTH TO NORTH WITH OUTSIDE PIPES UNLESS OTHERWISE STATED.
  9. CLASS 5 BED & SURROUND TO BE USED WHERE COVER TO PIPE IS GREATER THAN 1.2M IN HEIGHTS OR DEEP IN OPEN CUTTINGS. STANDARD DETAIL SHALL BE USED WHERE COVER IS NOT TO BE USED FOR COSTING.
  10. STRAIGHT LINE INTERPOLATED ROCK HEAD IS INDICATIVE ONLY NOT TO BE USED FOR COSTING.



FOR TECHNICAL APPROVAL

NO	DATE	BY	FOR	DESCRIPTION	CHKD	APPD
1	18/02/10	GP	FOR	ISSUE FOR CONSTRUCTION		

WSP  
 WSP Group plc  
 WSP House, 100, The Quadrant, Bournemouth, Dorset, BH1 1GR  
 Tel: +44 (0)1202 310000 Fax: +44 (0)1202 310001  
 www.wspgroup.com

COUNTRY SIDE PROPERTIES

PROJECT: SOUTH WEST BICESTER BICESTER, OXFORDSHIRE

SHEET 1 OF 2

DATE: 18/02/10

BY: GP

FOR: CONSTRUCTION

CHKD: GP

APPD: GP

11011903 1903RP024 B

© WSP Group plc