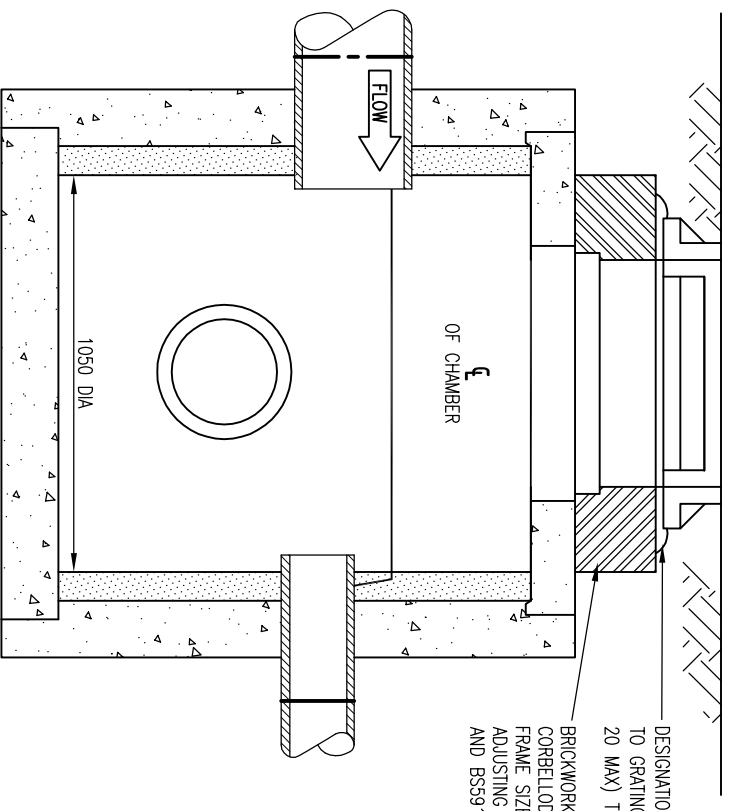
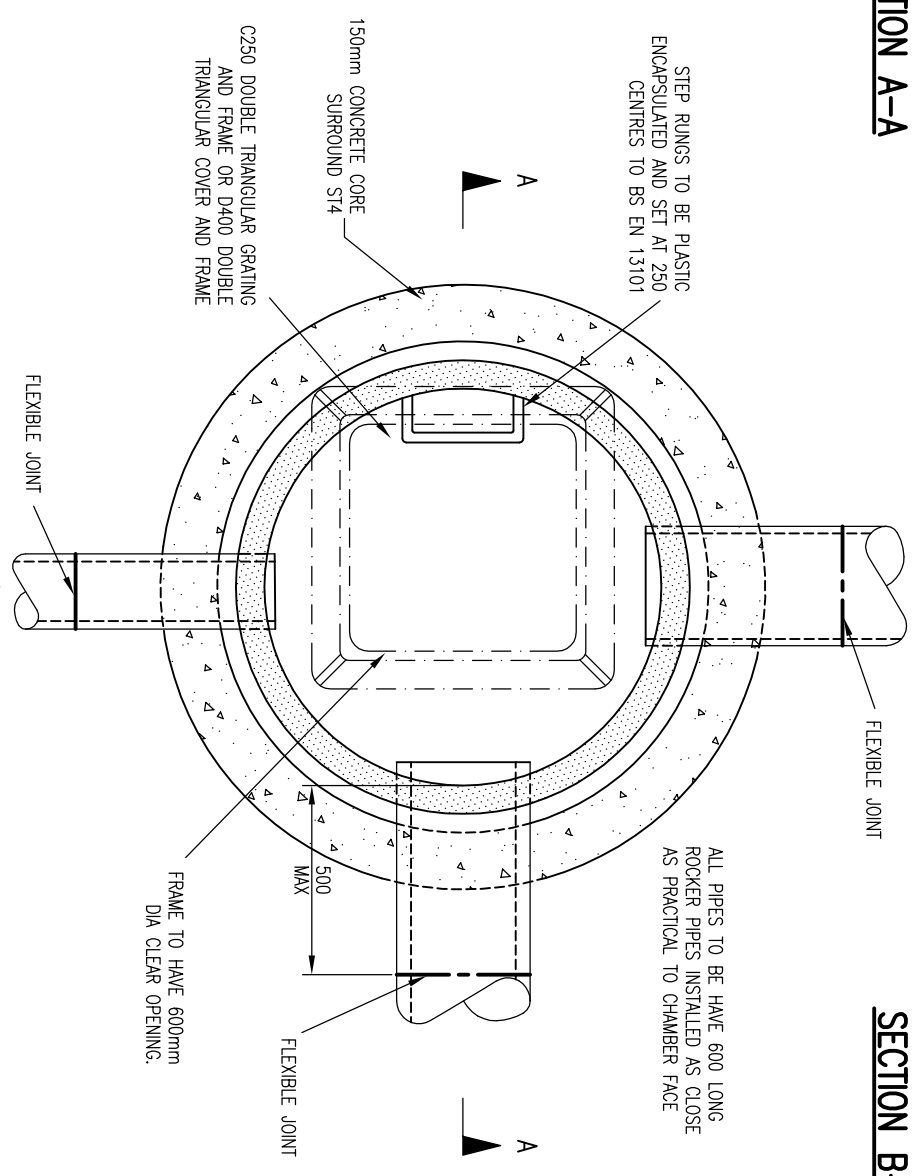


SECTION A-A



SECTION B-B



PLAN ON C-C

DO NOT SCALE

- NOTES
1. ALL DIMENSIONS ARE IN MILLIMETRES UNLESS STATED OTHERWISE.
 2. CATCHPIT TO BE CONSTRUCTED IN PRECAST CONCRETE TO BS EN 1917 AND BS 5911-3.
 3. INVERT DETAILS, SEE MANHOLE SCHEDULES
 4. MORTAR TO BE DESIGNATION (I) TO SHW SERIES 2400.
 5. PIPES TO BE BUILT INTO CATCHPIT WITH DESIGNATION (I) MORTAR ARE SHOWN ON THE DRAWING AND APPENDIX 5/1.
 6. SEE SHW, SUB CLAUSE 507.7 REGARDING BACKFILLING/SURROUND TO CHAMBER.
 7. ALL ST CONCRETE SHALL BE TO SHW, CLAUSE 2602.

REV	DATE	BY	DESCRIPTION	CHK	APP
C	03/12/08	JH	ISSUED FOR TECHNICAL APPROVAL	JAM	JH
B	28/05/08	DP	REDRAWN	JM	JM
A	07/09/07	DP	INITIAL ISSUE	JM	JM

DRAWING STATUS:
FOR TECHNICAL APPROVAL



Mountbatten House, Basing View, Basingstoke, Hampshire RG21 4HU
Tel: +44 (0)1256 318800 Fax: +44 (0)1256 318700
<http://www.wspgroup.com>

CLIENT:
COUNTRYSIDE PROPERTIES

ARCHITECT:

PROJECT:
SOUTH WEST BICESTER
BICESTER, OXFORDSHIRE

TITLE:
SECTION 278 WORKS
CATCHPIT FOR PIPES 450 MAX DIAMETER
(TYPE 7)

SCALE @ A3:
1:20

CAD FILE:
1903-SD-018

PROJECT No:
11011903

© WSP Group plc