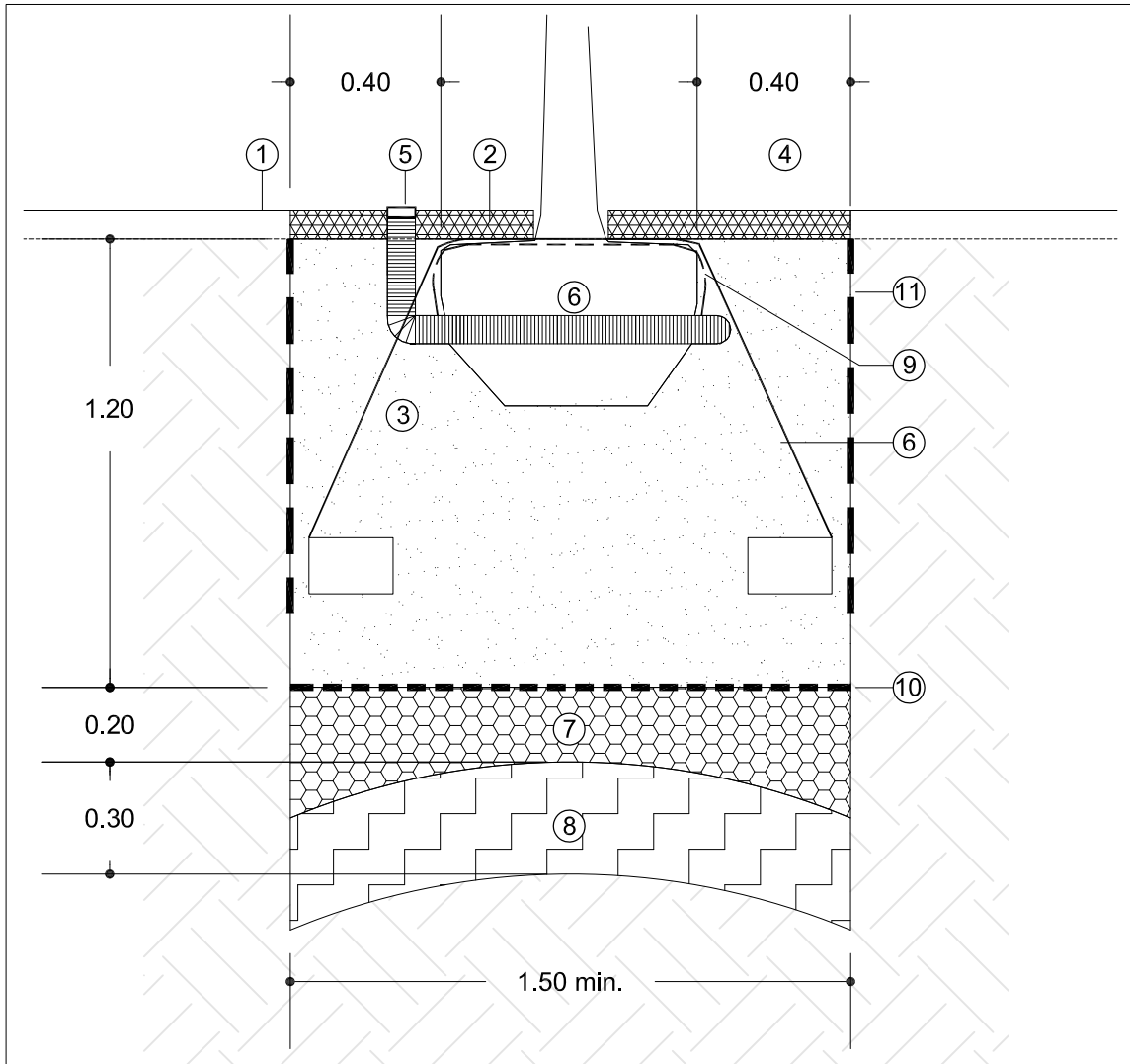


SECTION VIEW



KEY:

- | | |
|--|--|
| <ul style="list-style-type: none"> ① Grass/Mulch/Paving level. ② Minimum 50mm depth of bark mulch, 1.25 metre dia. around trunk of tree in grass areas. ③ Minimum 1200mm depth of Rolawn Blended Loam or similar and approved backfill to BS 3882, compacted in layers. ④ Tree pit to have a diameter at least 400mm greater than that of rootball. ⑤ Root Rain Metro irrigation system from Greenleaf. ⑥ Underground root guying system using deadman anchors installed as manufacturers specification. | <ul style="list-style-type: none"> ⑦ 200mm drainage layer of 20mm shingle sized aggregate. ⑧ Base of pit broken up to depth of 300mm. ⑨ 'Plati-mat' or similar & approved permeable matting to top surface of rootball in accordance with manufacturer's specification. ⑩ Geotextile filter layer – 'Terram' 1000 or similar & approved. ⑪ ReRoot 1000 linear root barrier from Greenleaf or similar & approved installed as manufacturers specification. |
|--|--|


NOTE:

Root barrier only installed on tree pit adjacent to any service runs, buildings and paving.


Countryside Properties
Countryside Properties PLC
 Countryside House
 The Drive
 Brentwood
 Essex, CM13 3AT
 Tel: 01277 280000 Fax: 01277 690800
 www.countryside-properties.com
 Group Chief Architect: Mette McLarney B Arch (Hons) RIBA

site: **Phase KM1
 Kingsmere
 Bicester**

 title: **Tree Pit Detail
 Semi-Mature / ANS Trees
 In Soft Landscape Areas**

 <small>BSI FS 53054 Quality Management EMS 61602 Environmental Management</small>	drawn by: MJR
	checked: ESB
	scale: 1:20 @A4
	date: November 2009
drawing no: N00200-PL-L07	sheet no: revision: