

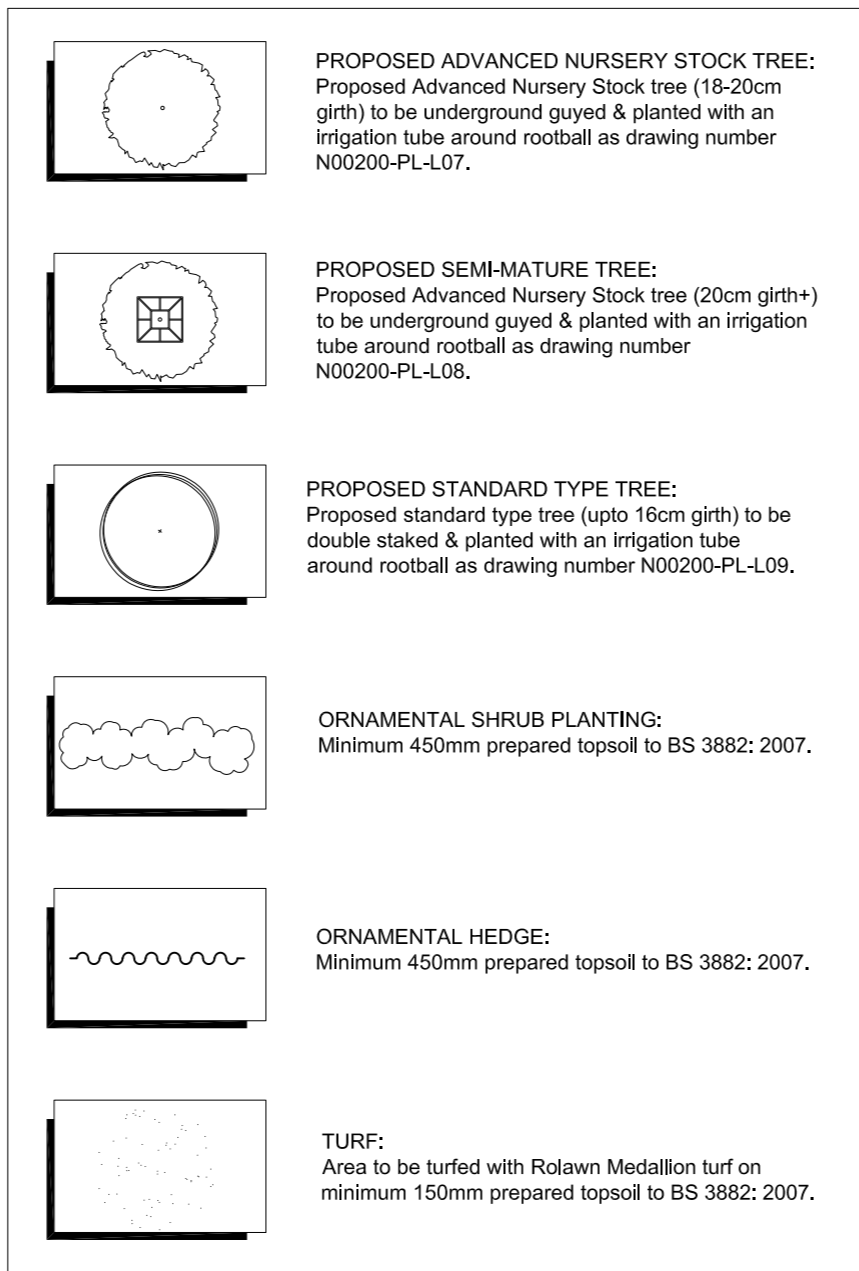
TREE SCHEDULE

CODE	DESCRIPTION	QTY	TYPE	GIRTH
Be Pen	Betula pendula	3	RB	14/16cm
Ma Tsc	Malus tschonoskii	7	RB	14/16cm
Pr Sun	Prunus 'Sunset Boulevard'	7	RB	20/25cm
So An	Sorbus ana	2	RB	14/16cm
Sa She	Sorbus auc. 'Sheerwater Seeding'	4	RB	18/20cm
Sa She	Sorbus auc. 'Sheerwater Seeding'	4	RB	14/16cm

PLANT SCHEDULE

CODE	DESCRIPTION	QTY	SIZE
Abe	Abelia grandiflora	37	1.0L
Ajc	Aucuba jap. 'Crotonifolia'	15	1.0L
Ayv	Aucuba jap. 'Variegata'	72	1.0L
Bcp	Bergenia cordifolia 'Purpurea'	71	3L
Cab	Ceanothus 'Autumnal Blue'	53	1.0L
Cbm	Ceanothus 'Blue Mound'	12	5L
Ctb	Ceanothus arb. 'Trewithen Blue' (on frame)	14	1.4L
Ctr	Ceanothus thyrsiflorus repens	19	5L
Cta	Choisya 'Aztec Pearl'	42	1.0L
Cgf	Choisya 'Goldfingers'	46	1.0L
Ct	Choisya ternata	104	1.0L
Cts	Choisya ternata Sundance	14	1.0L
Cpi	Cistus 'Silver Pink'	16	1.0L
Csn	Cistus pulverulentus 'Sunset'	32	1.0L
Cars	Cordyline australis 'Red Star'	6	1.0L
Catd	Cordyline australis 'Torbay Dazzler'	8	1.0L
Cae	Cornus alba 'Elegantissima'	24	5L
Cae	Cornus alba 'Elegantissima'	34	1.0L
Cih	Cornus alba 'Ivory Halo'	19	5L
Caov	Cornus alba 'Sibinca Variegata'	11	1.0L
Caov	Cornus alba 'Sibinca Variegata'	30	5L
Ccag	Cotinus 'Grace'	3	2.0L
Cf	Cotoneaster franchetii	118	5L
Cf	Cotoneaster franchetii	124	1.0L
Chv	Cotoneaster horizontalis 'Variegatus'	19	5L
Csi	Cotoneaster simonsii	16	1.0L
Exe	Elaeagnus ebbingei	743	1.0L
Egb	Escallonia 'Golden Bnan'	7	1.0L
Eng	Euonymus fort. 'Emerald 'n Gold'	23	3L
Eng	Euonymus fort. 'Emerald 'n Gold'	40	5L
Eng	Euonymus fort. 'Emerald 'n Gold'	24	1.0L
Eeg	Euonymus fort. 'Emerald Gaety'	100	5L
Eeg	Euonymus fort. 'Emerald Gaety'	122	3L
Eeg	Euonymus fort. 'Emerald Gaety'	21	1.0L
Fj	Fatsia japonica	7	1.0L
Hag	Hebe 'Autumn Glory'	57	1.0L
Hgo	Hebe 'Great Orme'	100	1.0L
Hmw	Hebe 'Mrs Winder'	15	3L
Hmw	Hebe 'Mrs Winder'	81	1.0L
Hnb	Hebe 'Nicolas Blush'	22	1.0L
Hs	Hebe 'Sutherlandi'	30	1.0L
Hre	Hebe albicans 'Red Edge'	9	1.0L
Hr	Hebe rakaiensis	120	1.0L
Hhi	Hyppocrepis 'Hidcote'	15	3L
Hhi	Hyppocrepis 'Hidcote'	87	1.0L
Lan	Laurus nobilis (Half Standard, 400-450mm)	16	2.0L
Lah	Lavandula ang. 'Hidcote'	218	5L
Lam	Lavandula ang. 'Munstead'	165	5L
Lam	Lavandula ang. 'Munstead'	15	3L
Lo	Ligustrum ovalifolium	380	1.0L
Lbg	Lonicera nt. 'Baggesen's Gold'	28	5L
Lbg	Lonicera nt. 'Baggesen's Gold'	26	1.0L
Lbg	Lonicera nt. 'Baggesen's Gold'	27	3L
Llb	Lonicera nt. 'Lemon Beauty'	156	3L
Ptv	Parthenocissus tr. 'Veitchii' (on frame)	35	1.0L
Pjr	Phormium 'Jester'	23	1.0L
Ptp	Phormium tenax 'Purpureum'	1	1.0L
Pns	Phormium tenax 'Sundowner'	5	1.0L
Ptv	Phormium tenax 'Variegata'	23	1.0L
Prr	Photinia fraseri 'Red Robin'	45	5L
Prr	Photinia fraseri 'Red Robin'	70	1.0L
Pfs	Piensa 'Flaming Silver'	2	1.0L
Pat	Potentilla f. 'Abbotswood'	2	1.0L
Pol	Prunus l. 'Otto Luyken'	37	5L
Pol	Prunus l. 'Otto Luyken'	15	3L
Pol	Prunus l. 'Otto Luyken'	11	1.0L
Plz	Prunus l. 'Zabeliana'	47	5L
Plz	Prunus l. 'Zabeliana'	10	3L
Rok	Rosa 'Kent'	88	3L
Rsk	Rosa 'Suffolk'	17	3L
Ros	Rosa 'Surrey'	16	3L
Rom	Rosmannus off. 'McConnell's Blue'	32	1.0L
Sac	Sarcococca confusa	5	5L
Sh	Sarcococca humilis	6	1.0L
Sg	Senecio 'Sunshine'	54	1.0L
Sg	Senecio 'Sunshine'	55	3L
Sg	Senecio 'Sunshine'	7	5L
Sjr	Skimmia japonica 'Rubella'	4	5L
Sjr	Skimmia japonica 'Rubella'	67	1.0L
Sfl	Spiraea japonica 'Firelight'	10	5L
Sfl	Spiraea japonica 'Firelight'	15	1.0L
Vo	Viburnum opulus	25	3L
Wfv	Weigelia florida 'Variegata'	31	1.0L

LEGEND:



NOTES:

All soft landscaping to strictly conform to Countryside Properties Plc Performance Specification for Soft Landscape Works.

No species, centre, size etc..... is to be amended without the prior approval of the landscape designer.

The use of pesticides and other non-organic garden chemicals are to be kept to a minimum to prevent any cumulative effects within the food chain.

Good horticultural practices shall be implemented within the planting scheme e.g. use of peat-free composts and mulches and application of non-residual pesticides.

Shrub Bed Topsoil: The level of shrub bed topsoil is to be finished 50mm below the adjacent paving and grass so that when bark mulch is applied it does not spill over.

Do not scale.

All trees/shrubs to be checked by structural engineer in compliance of NHBC requirements for design of foundations.

Countryside Properties

Countryside Properties PLC
Countryside House
The Drive
Brentwood
Essex CM13 3AT
Tel: 01277 260000 Fax: 01277 690000
www.countryside-properties.com
Group Chief Architect: Mette McLarney B Arch (Hons) RIBA

site: **Phase KM1 Kingsmere Bicester**

title: **Proposed Landscape Layout**

scale: **1:200** drawn by: **MJR**

date: **November 2009** checked: **ESB**

drawing no: **N00200-PL-L01**

sheet no: revision: