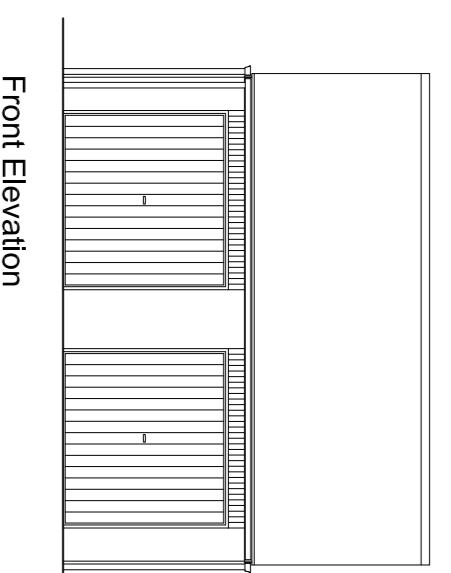
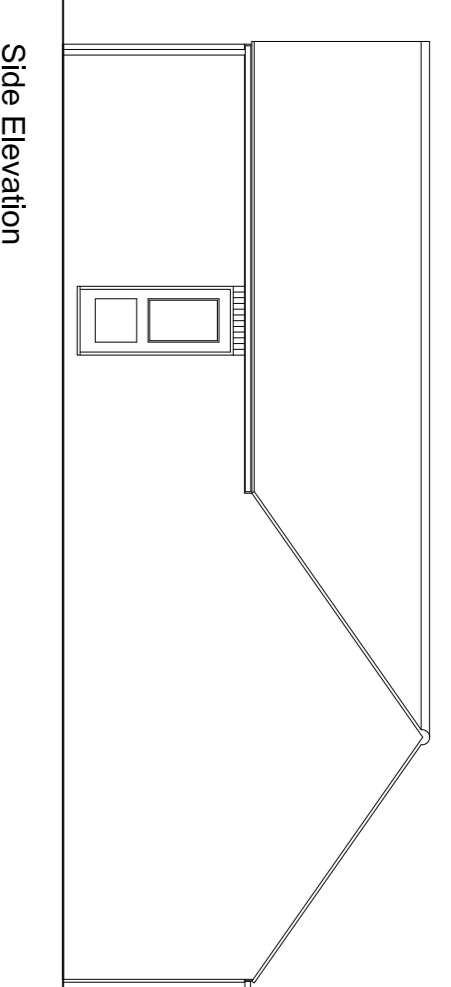


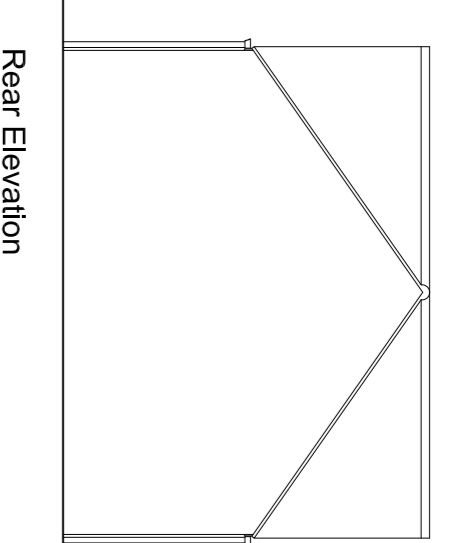
Plan  
(Plots 13-14 & 45-46)



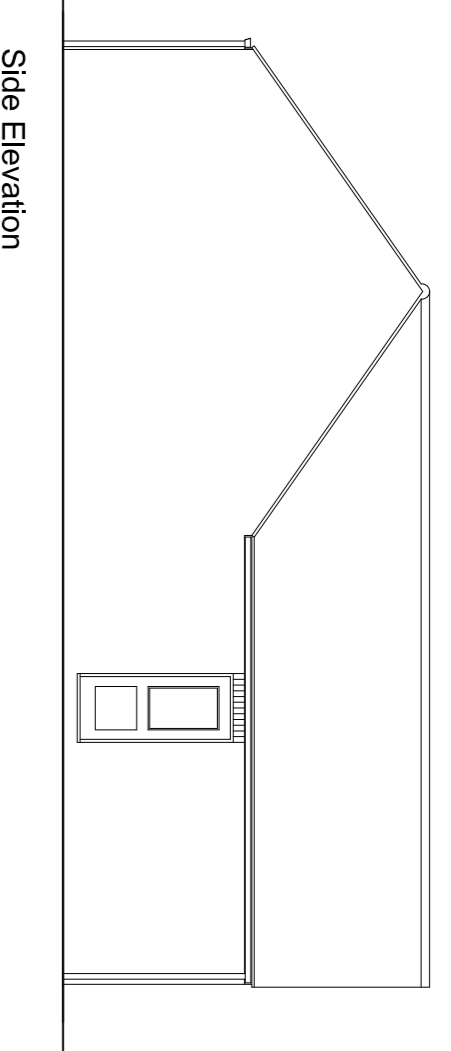
Front Elevation



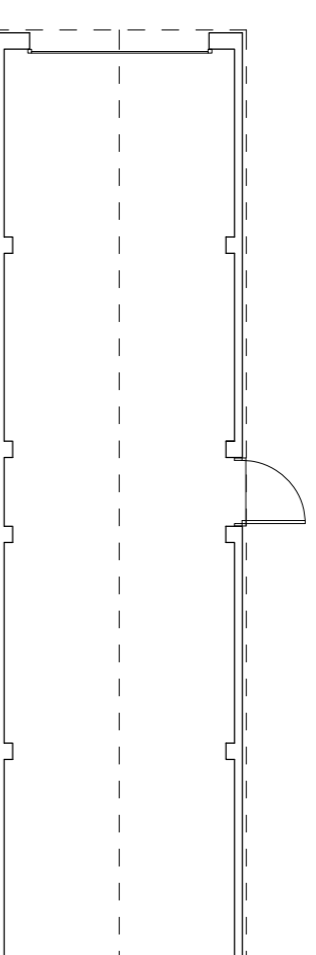
Side Elevation



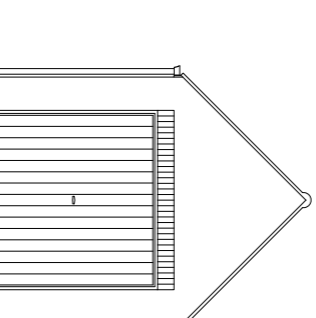
Rear Elevation



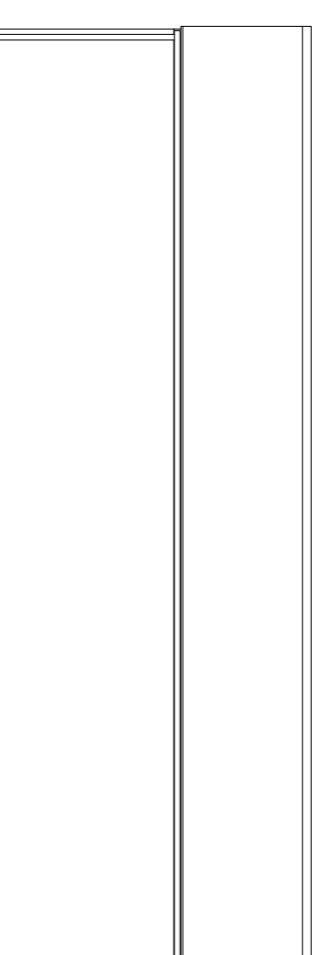
Side Elevation



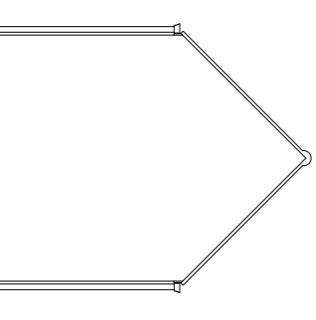
Plan  
(Plots 15 & 53)



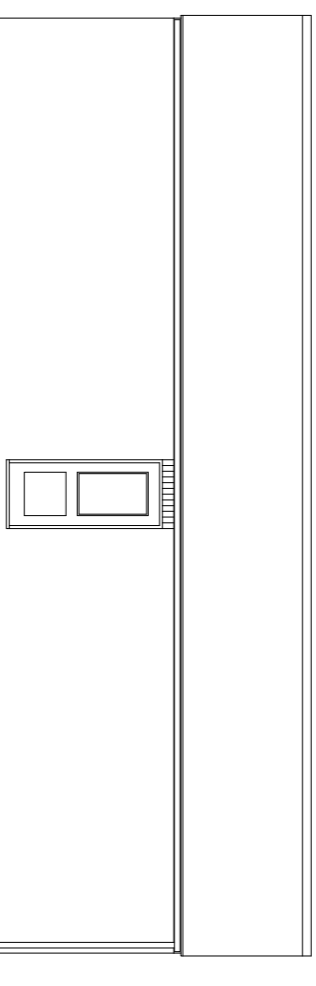
Front Elevation



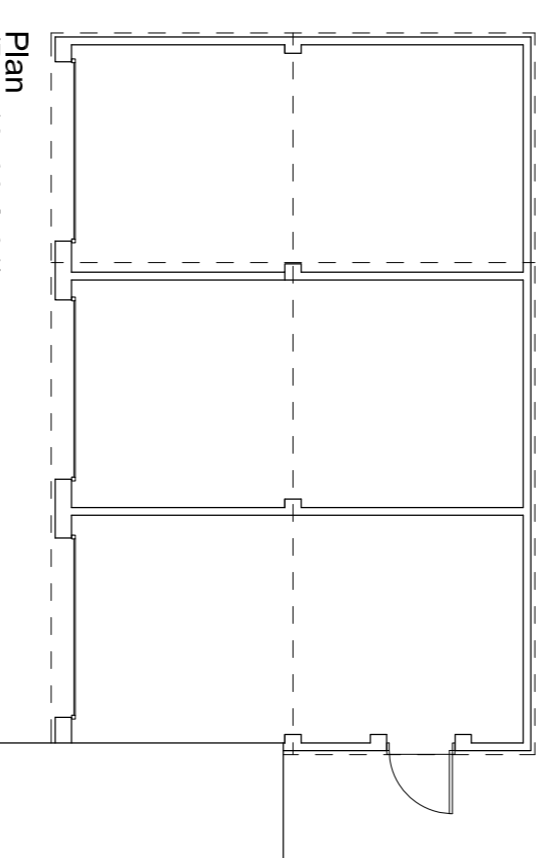
Side Elevation



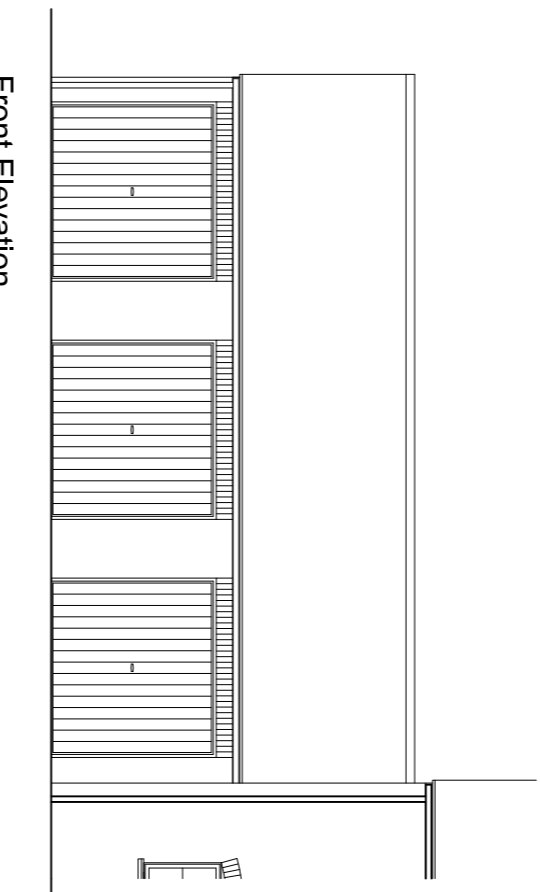
Rear Elevation



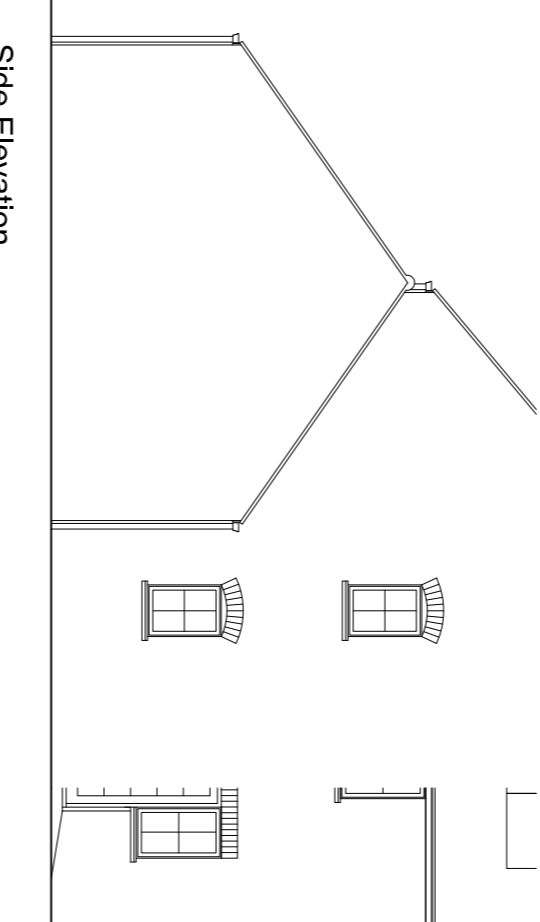
Side Elevation



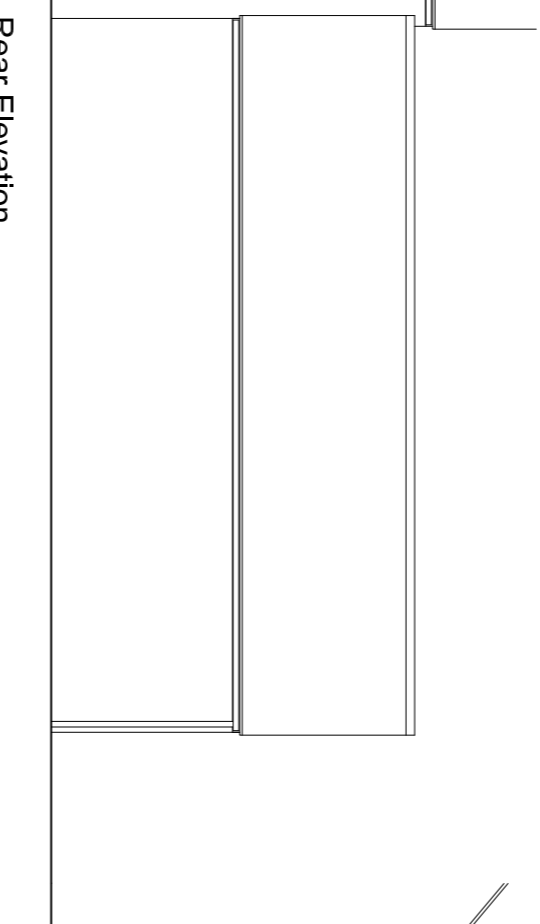
Plan  
(Plot 19, 30 & 31)



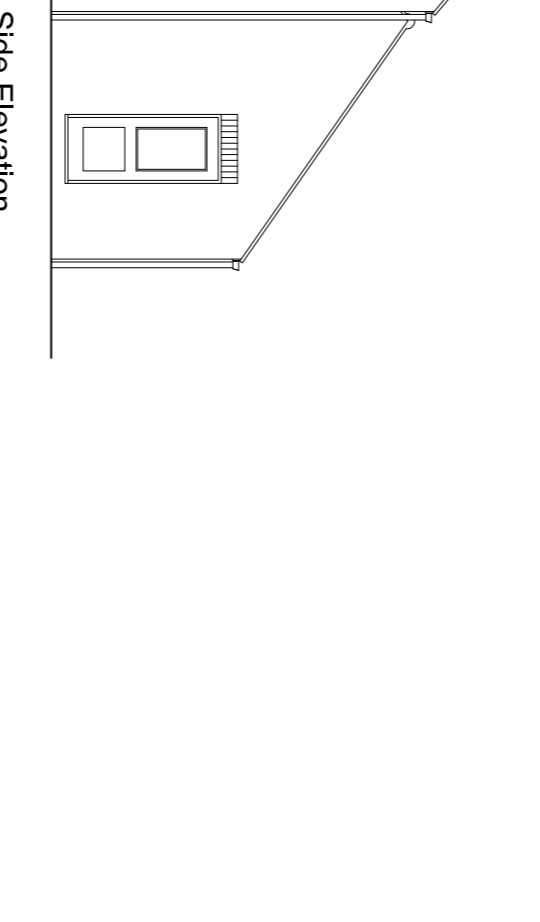
Front Elevation



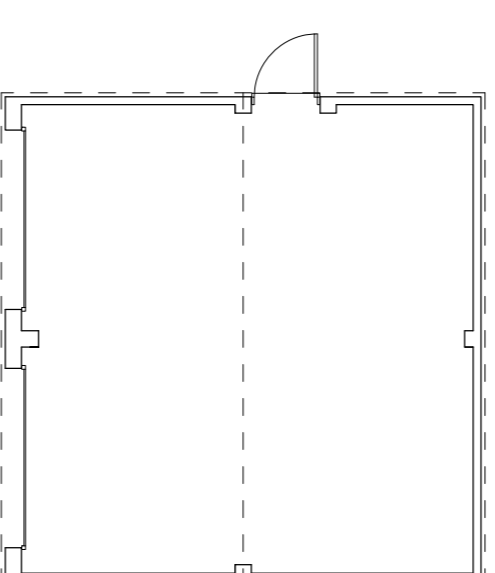
Side Elevation



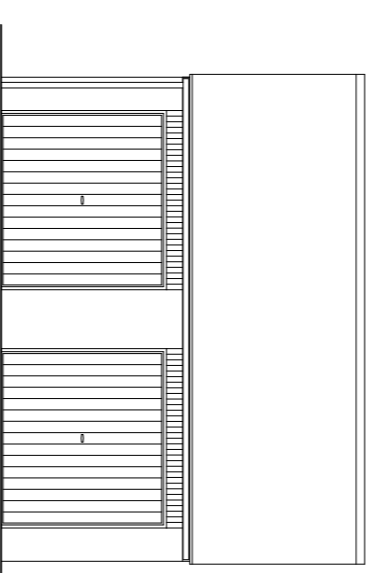
Rear Elevation



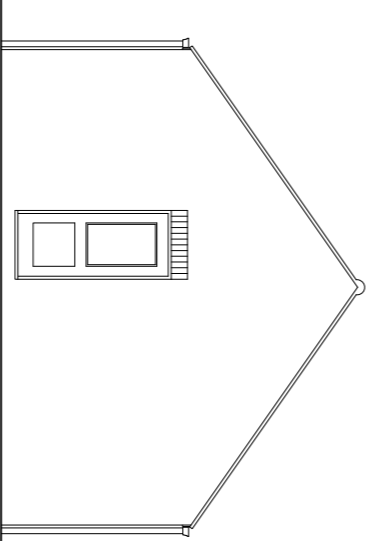
Side Elevation



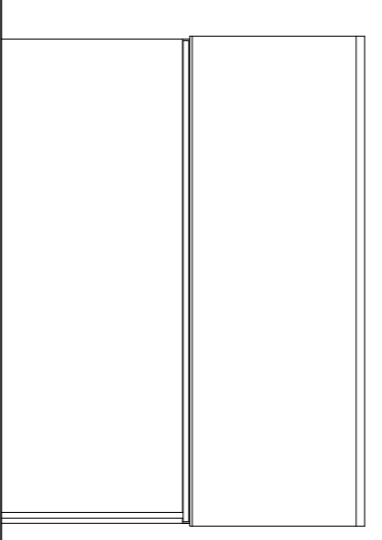
Plan  
(Plots 23, 41, 44, 55, 69, 70)



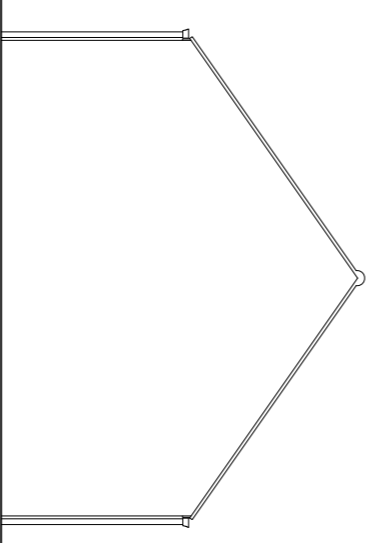
Front Elevation



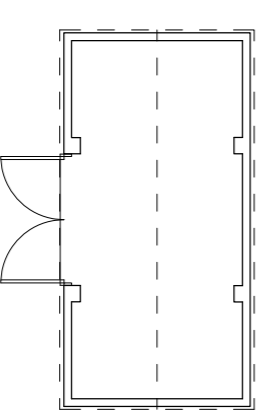
Side Elevation



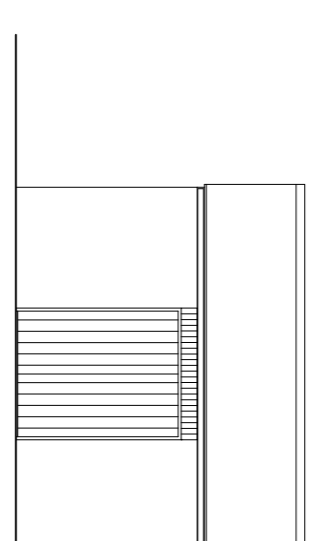
Rear Elevation



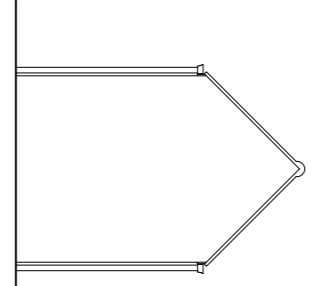
Side Elevation



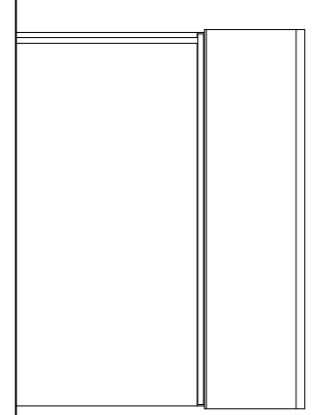
Cycle Store



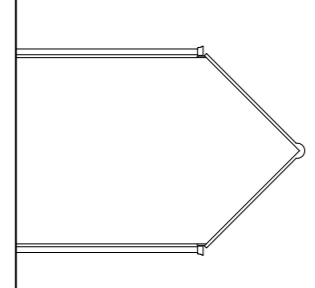
Front Elevation



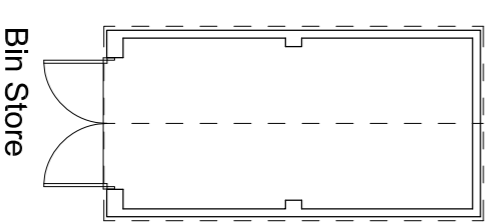
Side Elevation



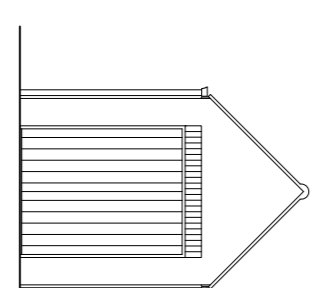
Rear Elevation



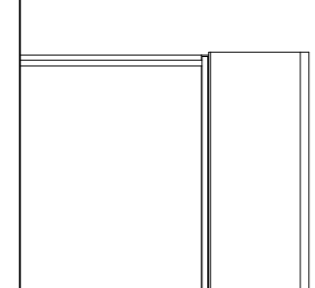
Side Elevation



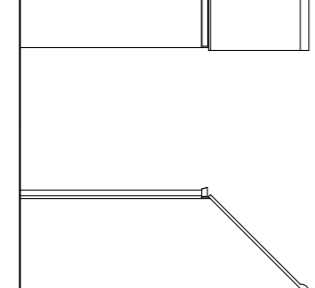
Bin Store



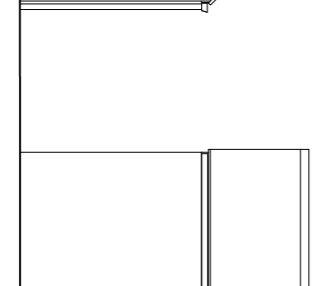
Front Elevation



Side Elevation



Rear Elevation



Side Elevation

© The drawing is copyright of Countryside Properties Plc and must not be copied or reproduced in whole or in part, nor used in conjunction with any project without Countryside's written consent.

**Countryside Properties**  
 Kingsmead, Kingsmead Lane, Bicester, Oxfordshire, OX9 2JG  
 Tel: 01235 832000 Fax: 01235 832001  
 Email: sales@countryside.co.uk Website: www.countryside.co.uk

Area KM1 - Kingsmead  
 Bicester  
 Garages, Cycle Store  
 and Bin Store

**BSI**  
 Building Standards Institute  
 389 Chiswick Uxbridge, Middlesex, Ux8 3PL  
 Tel: 020 8996 9001 Fax: 020 8996 7001  
 Email: bsigroup@bsi.com Website: www.bsi.com

Project No: N00200-PL-370  
 Sheet 1 of 3

Client: K8  
 Date: 13/09  
 Date: November 2009  
 Scale: 1:200