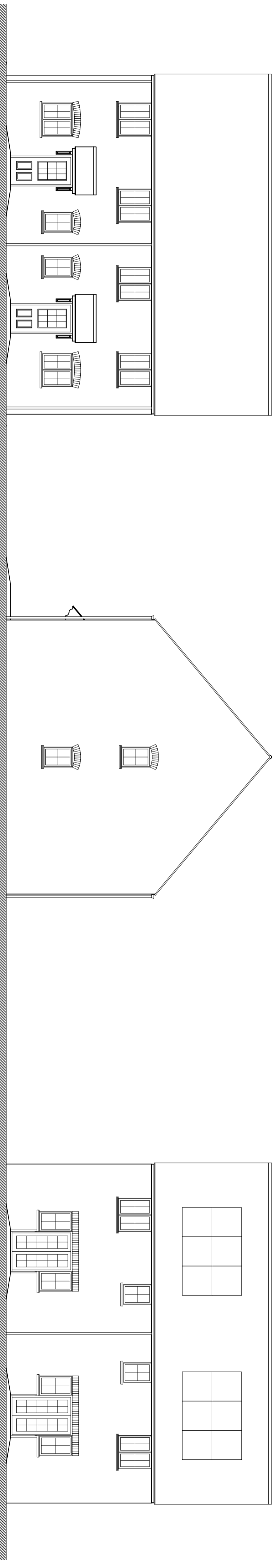


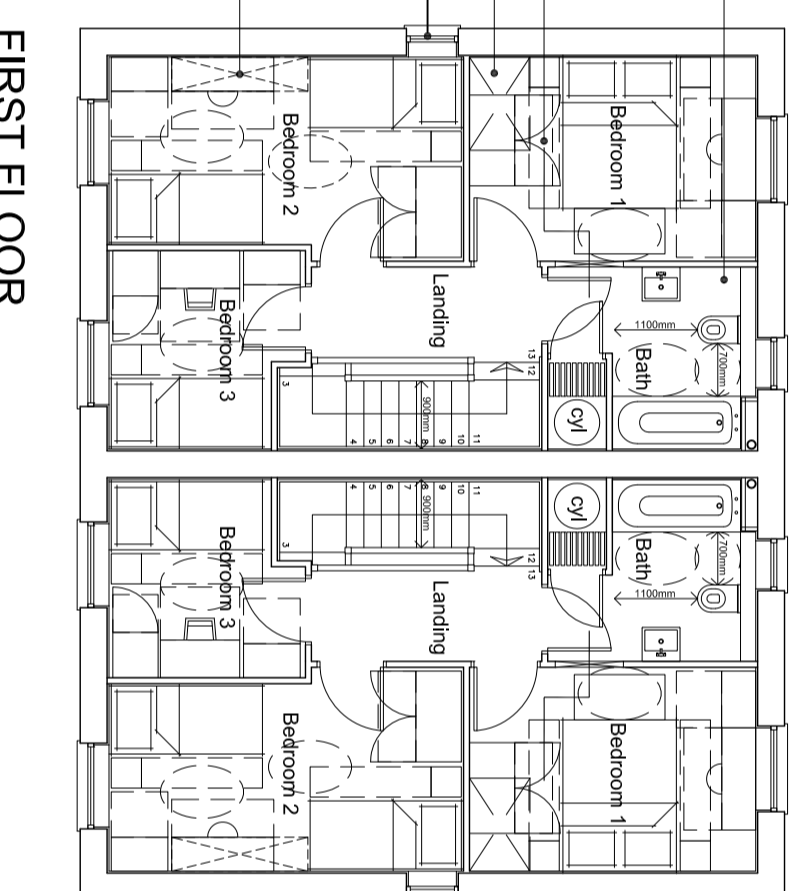
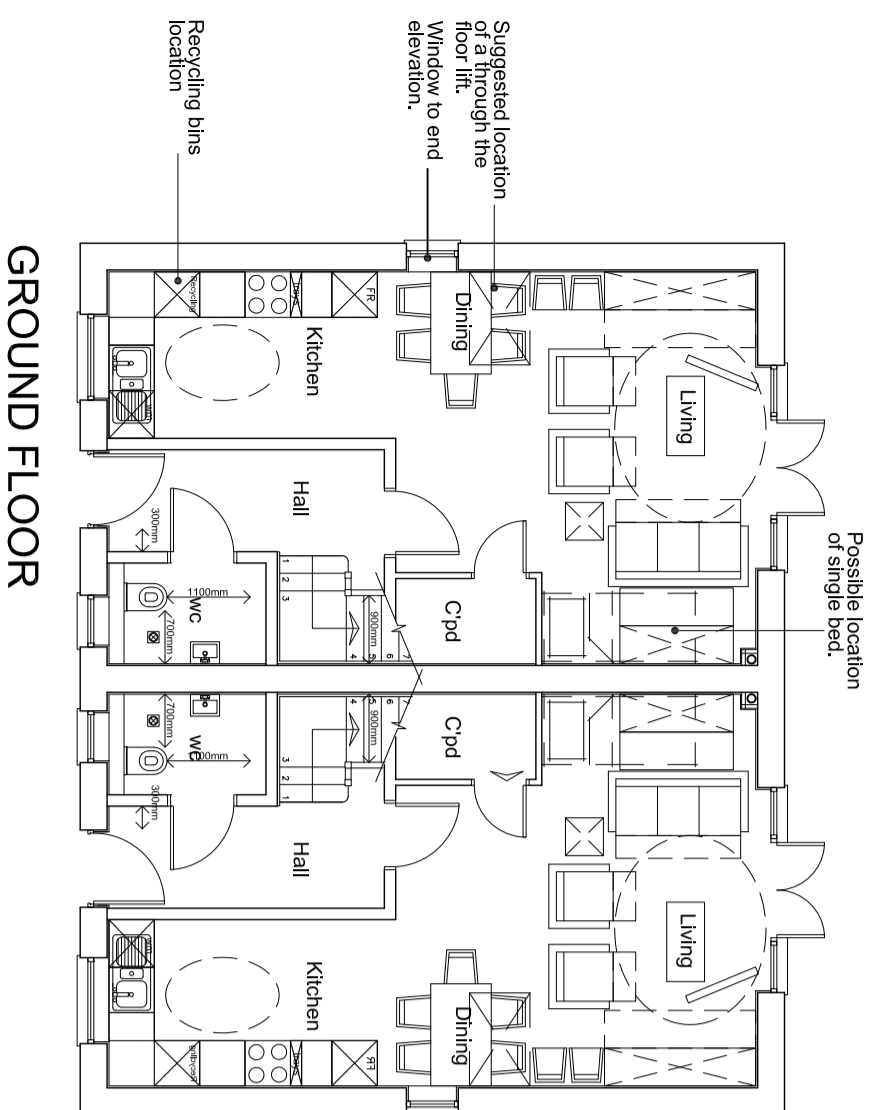
THIS HOUSE TYPE IS DESIGNED TO MEET LIFETIME HOME REQUIREMENTS, CODE FOR SUSTAINABILITY LEVEL 3 AND THE GOOD PRACTICE GUIDE FOR STANDARDS AND QUALITY OF DEVELOPMENT AS REQUIRED BY THE SCHEME DEVELOPMENT STANDARDS FOR AFFORDABLE HOUSING.



FRONT ELEVATION

SIDE ELEVATION

REAR ELEVATION



revision	date	description

	site: Area KM1 - Kingsmere Bicester
	floor area: 954 ft² finish area: 968 ft² struct. area: 968 ft²
drawing no: N00200-PL-230	
	drawn by: KB
checked: @AZ	scale: 1:100
date: November 2009	