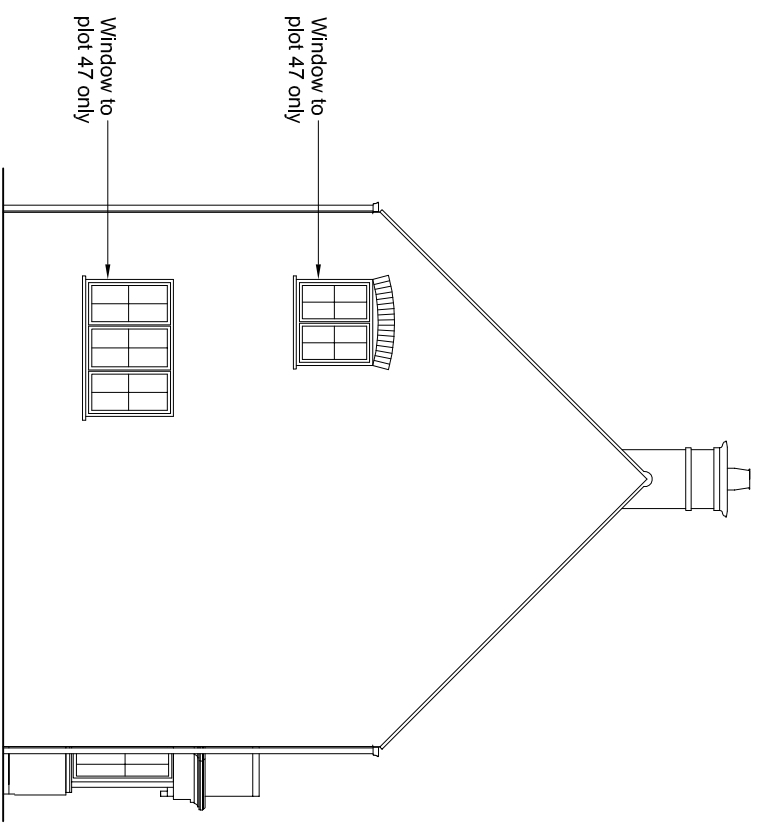
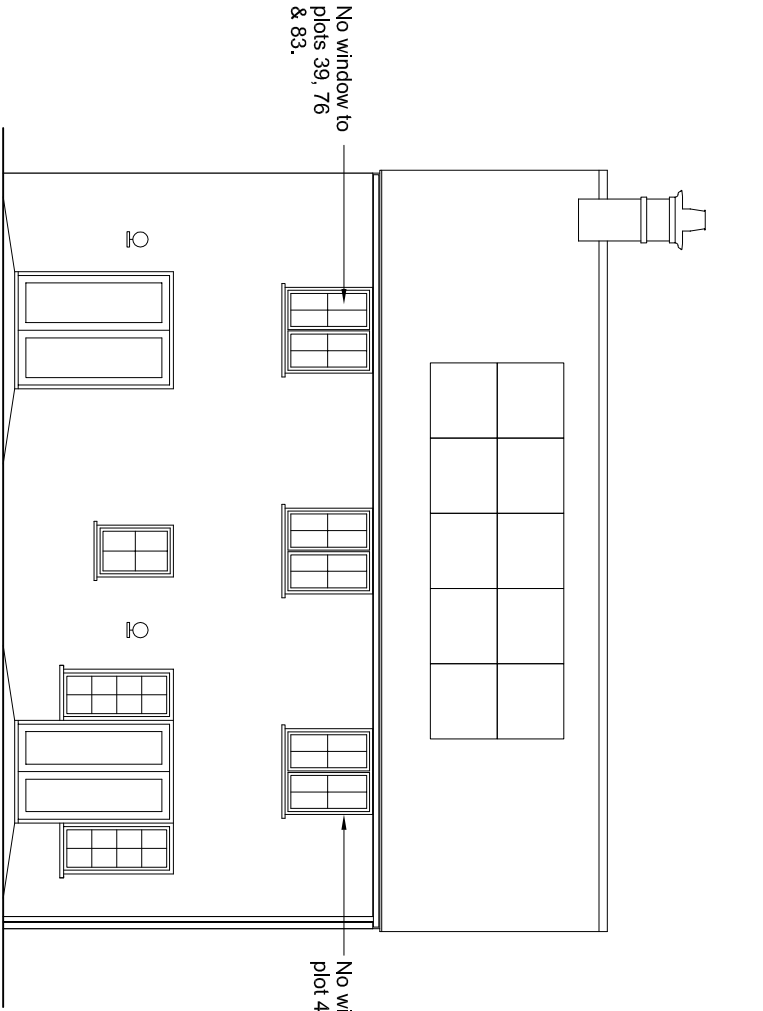


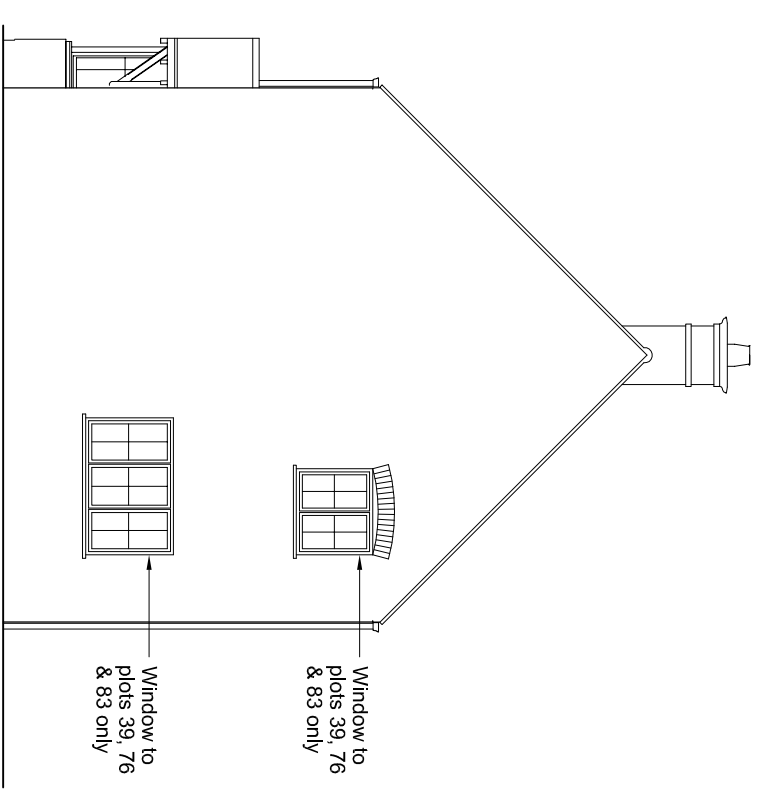
Front Elevation



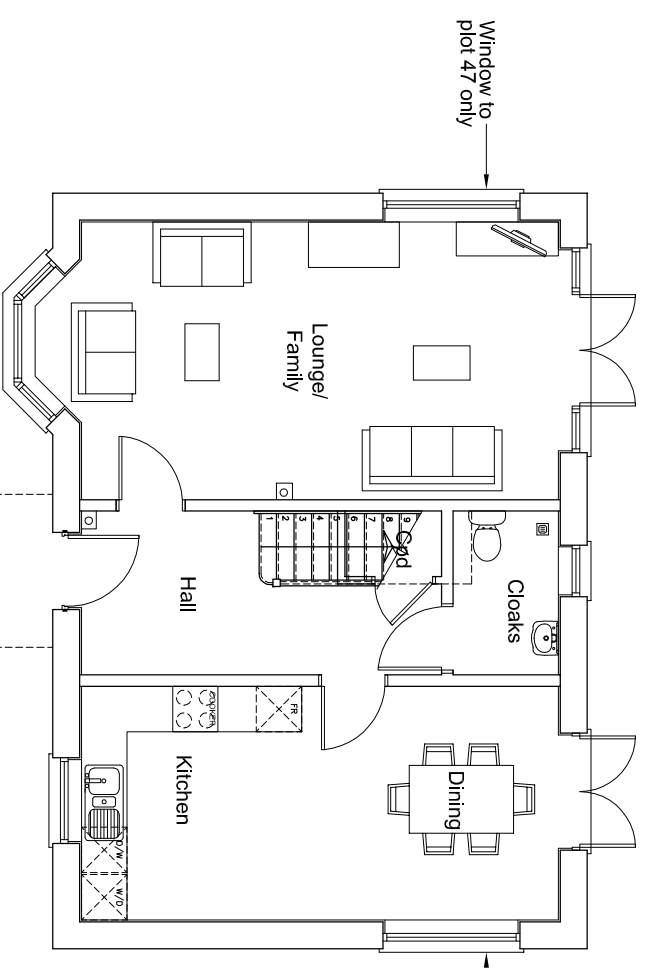
Side Elevation



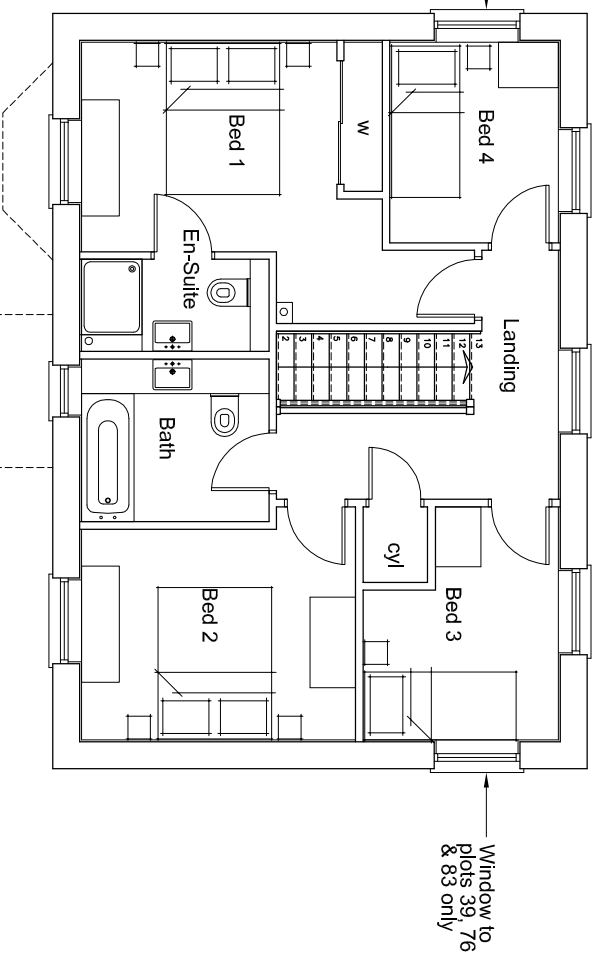
Rear Elevation



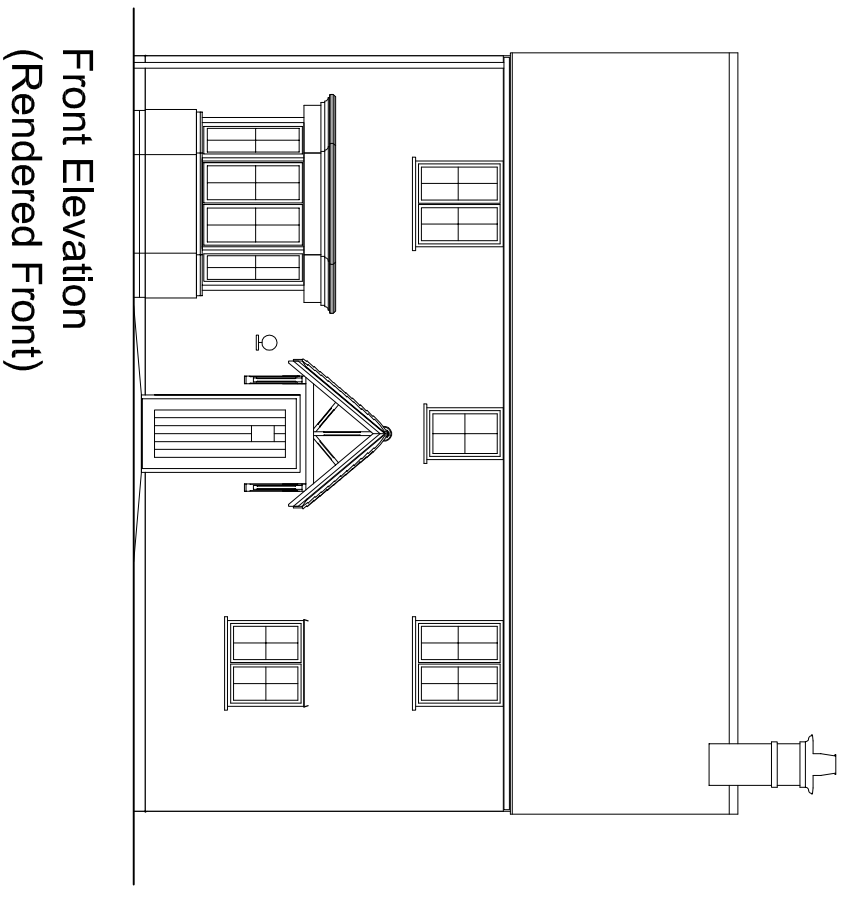
Side Elevation



Ground floor

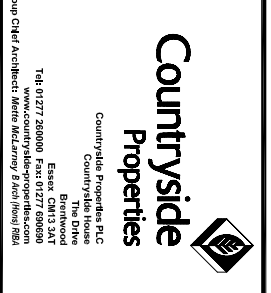


First floor



Front Elevation
(Rendered Front)

THIS HOUSE IS DESIGNED
TO MEET LIFETIME HOME
REQUIREMENTS



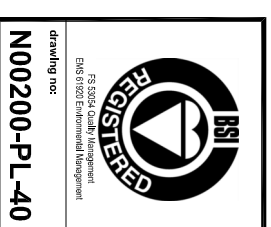
Countryside
Properties

Countryside Properties PLC
Countryside House
1st Floor
100 Broad Street
Birmingham B1 2HT
Tel: 0121 277 2000 Fax: 0121 277 2000
Group CHM Australia, Balfour Beatty, Bunnings, Fairfax & Fyffes

Site:
Area KM 1 - KINGSMERE
BICESTER

House Type D - Brick
Plans and Elevations

floor area
1263 ft²
struct. 1280 ft²



BICESTER
1263 sq ft
100 Broad Street
Birmingham B1 2HT
Tel: 0121 277 2000 Fax: 0121 277 2000
Group CHM Australia, Balfour Beatty, Bunnings, Fairfax & Fyffes

drawing no:	PG
scale:	1:100
date:	July 2009
sheet no:	
revision:	