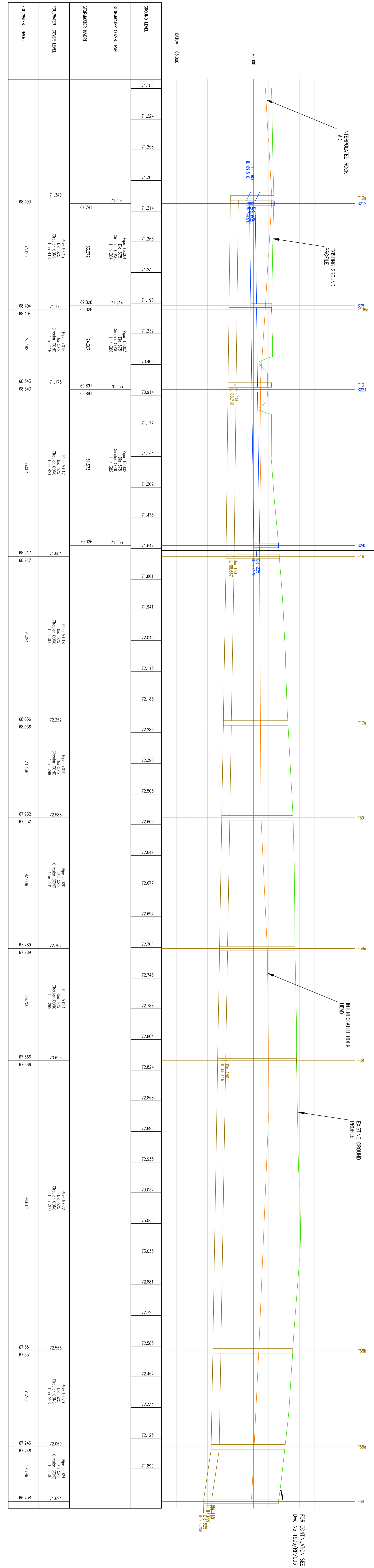


DO NOT SCALE

NOTES

1. ALL DIMENSIONS ARE IN METRES UNLESS OTHERWISE STATED. SHOW ALL LEVELS ABOVE DATUM ARE ALSO IN METRES.
2. PIPE DIAMETERS ARE IN MILLIMETRES.
3. THIS DRAWING SHOULD BE READ IN CONJUNCTION WITH ALL OTHER RELEVANT ENGINEERING DETAILS, DRAWINGS & SPECIFICATIONS.
4. ALL FOLL SEWER WORKS ARE TO BE CARRIED OUT IN ACCORDANCE WITH SPECIFICATIONS FOR ADOPTION 6TH EDITION.
5. PRIOR TO CONSTRUCTION WORKS COMMENCING ON SITE, THE CONTRACTOR TO LOCATE AND PROTECT THE EXISTING SERVICES (ELECTRICITY, WATER, GAS, TELEPHONE, CABLES AND OTHER UTILITIES) AND THEIR LOCATION OWNERS.
6. THE LOCATION OF ANY SERVICES SHOWN ON THIS DRAWING ARE INDICATIVE ONLY. IT WILL BE THE RESPONSIBILITY OF THE CONTRACTOR TO LOCATE AND PROTECT THE EXISTING SERVICES PRIOR TO COMMENCING ANY CONSTRUCTION.
7. ANY REVISIONS/CHANGES TO THIS DRAWING ARE TO BE COMPLETED IN ADVANCE OF THE PROPOSED WORKS AND IN ACCORDANCE WITH THE RELEVANT STATUTORY REQUIREMENTS AND RECOMMENDATIONS.
8. FOR CONSTRUCTION DETAILS REFER TO THE RELEVANT WSP DRAWING NUMBER LISTED ON THE DRAWING ISSUE SHEET.
9. THE CONTRACTOR IS TO KEEP A RECORD OF ANY WORKINGS DONE, SO THAT AS BUILT DRAWINGS CAN BE PREPARED UPON COMPLETION OF THE PROJECT.
10. ALL PIPES SHALL BE Laid SOUTH TO NORTH WITH OUTSIDE PIPES UNLESS OTHERWISE STATED.
11. CLASS 5 BED & SURROUND TO BE USED WHERE COVER TO PIPE IS GREATER THAN 1.2M IN HEIGHTS OR DEPTH IN OPEN PHASE REFER TO STANDARD DETAIL.
12. STRAIGHT LINE INTERPOLATED ROCK HEAD IS INDICATIVE ONLY. NOT TO BE USED FOR COSTING.

PHASE 1 – FOUL WATER | PHASE 1 – FOUL WATER
PHASE 3 – SURFACE WATER



LONGITUDINAL SECTION
SCALE 1:500 HORIZ
1:100 VERT

NO	DATE	BY	DESCRIPTION
1	12/12/2024	SP	ISSUED FOR TENDER
2	12/12/2024	SP	ISSUED FOR TENDER
3	12/12/2024	SP	ISSUED FOR TENDER
4	12/12/2024	SP	ISSUED FOR TENDER
5	12/12/2024	SP	ISSUED FOR TENDER
6	12/12/2024	SP	ISSUED FOR TENDER
7	12/12/2024	SP	ISSUED FOR TENDER
8	12/12/2024	SP	ISSUED FOR TENDER
9	12/12/2024	SP	ISSUED FOR TENDER
10	12/12/2024	SP	ISSUED FOR TENDER

FOR TECHNICAL APPROVAL

WSP
 WSP Group plc
 Head Office: 1st Floor, 100, The Boulevard, Huddersfield, West Yorkshire HD1 1JY
 Tel: +44 (0)1484 590000 Fax: +44 (0)1484 590000
 Website: www.wspgroup.com

COUNTY/CITY PROPERTIES

SOUTH WEST ROOSTER
 BRISTOL, GLOUCESTERSHIRE

FOUL WATER DRAINAGE
 NORTHERN CATCHMENT
 LONGITUDINAL SECTION

DATE	12/12/2024	ISSUED BY	SP	ISSUED FOR	TENDER
DATE	12/12/2024	ISSUED BY	SP	ISSUED FOR	TENDER
DATE	12/12/2024	ISSUED BY	SP	ISSUED FOR	TENDER
DATE	12/12/2024	ISSUED BY	SP	ISSUED FOR	TENDER
DATE	12/12/2024	ISSUED BY	SP	ISSUED FOR	TENDER
DATE	12/12/2024	ISSUED BY	SP	ISSUED FOR	TENDER
DATE	12/12/2024	ISSUED BY	SP	ISSUED FOR	TENDER
DATE	12/12/2024	ISSUED BY	SP	ISSUED FOR	TENDER
DATE	12/12/2024	ISSUED BY	SP	ISSUED FOR	TENDER
DATE	12/12/2024	ISSUED BY	SP	ISSUED FOR	TENDER