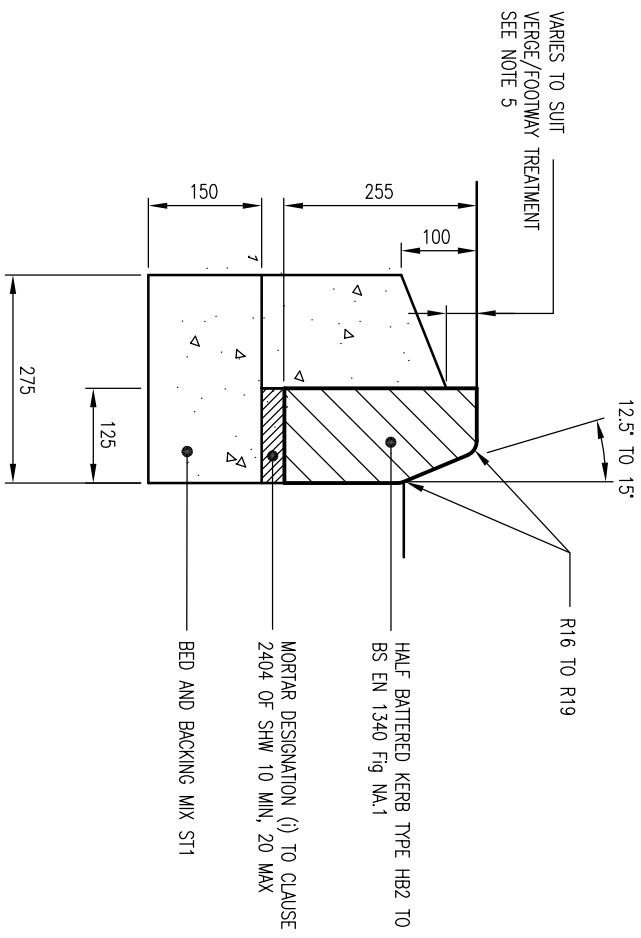
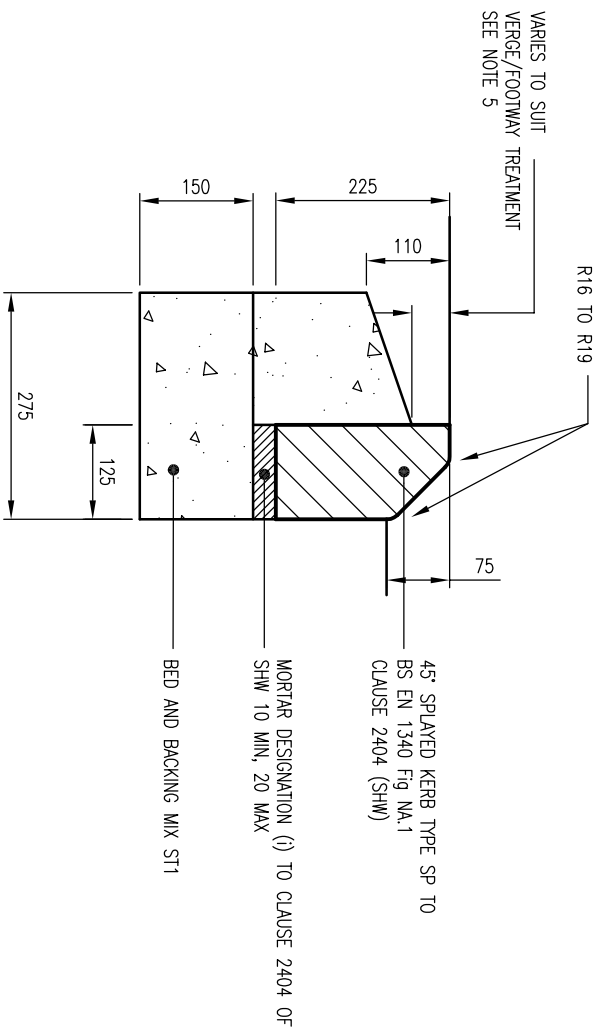


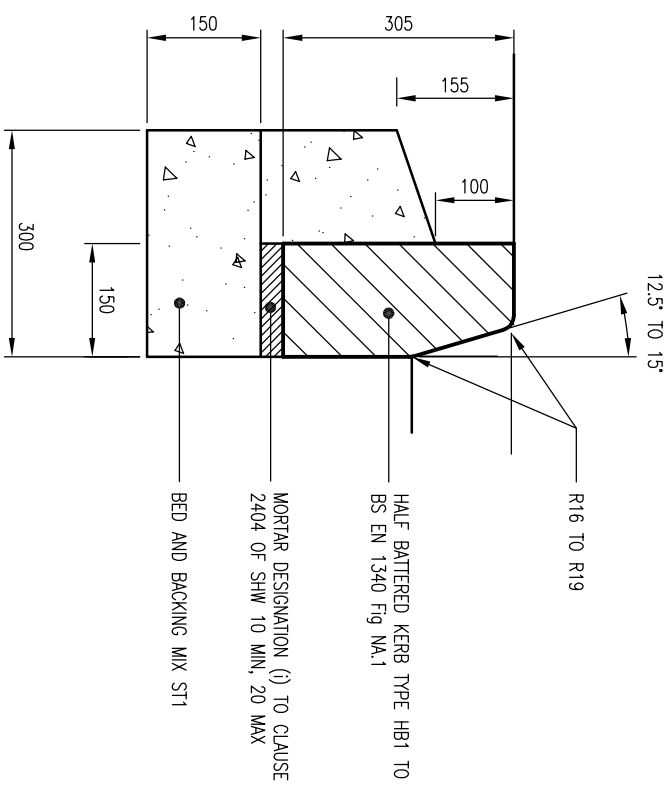
BULLNOSED KERB TYPE BN



HALF BATTERED KERB TYPE HB2



45° SPAYED KERB TYPE SP



HALF BATTERED KERB TYPE HB1

DO NOT SCALE

NOTES:

1. ALL DIMENSIONS ARE IN MILLIMETRES UNLESS OTHERWISE STATED.
2. ALL CLAUSE NUMBERS REFER TO THE SPECIFICATION FOR HIGHWAY WORKS (SHW), LATEST EDITION.
3. ALL PRECAST CONCRETE UNITS ARE TO CONFORM TO AND BE LAID IN ACCORDANCE WITH CL.1101 OF THE SPECIFICATION FOR HIGHWAY WORKS LATEST EDITION.
4. KERB, BED AND BACKING SHALL BE ST1 GRADE CONCRETE TO CL.2602 OF THE SHW, LATEST EDITION.
5. TO BE 30mm WHEN ADJACENT TO THE GRASSED VERGE, AND 30mm PLUS THE DEPTH OF THE PAVING STONE WHEN ADJACENT TO PAVING STONES.
6. MECHANICAL HANDLING OF HEAVY ITEMS IS RECOMMENDED

REV	DATE	BY	DESCRIPTION	CHK	APP
C	03/12/08	JH	ISSUED FOR TECHNICAL APPROVAL	JAM	JH
B	28/05/08	DAH	MINOR AMENDMENTS	JM	JM
A	17/09/07	DAH	FIRST ISSUE	JM	JJP

FOR TECHNICAL APPROVAL



Mounbatten House, Basing View, Basingstoke, Hampshire RG21 4HU
 Tel: +44 (0)1256 318800 Fax: +44 (0)1256 318700
<http://www.wspgroup.com>

COUNTRYSIDE PROPERTIES

**SOUTH WEST BICESTER
 BICESTER, OXFORDSHIRE**

**SECTION 278 WORKS
 KERBS TYPES SHEET 1 OF 3**

SCALE: A3	CHECKED: JM	APPROVED: JDP
N.T.S.		
CAD FILE: 1903-SD-004.DWG	DESIGN/DRAWN: DAH	DATE: September 2007
PROJECT No: 11011903	DRAWING No: 1903/SD/004	REV: C